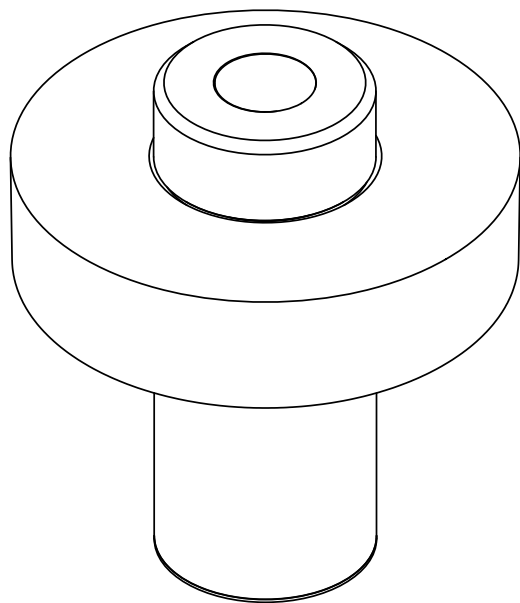


ollo

Design by
Václav Mlynář



bomma

bomma.cz

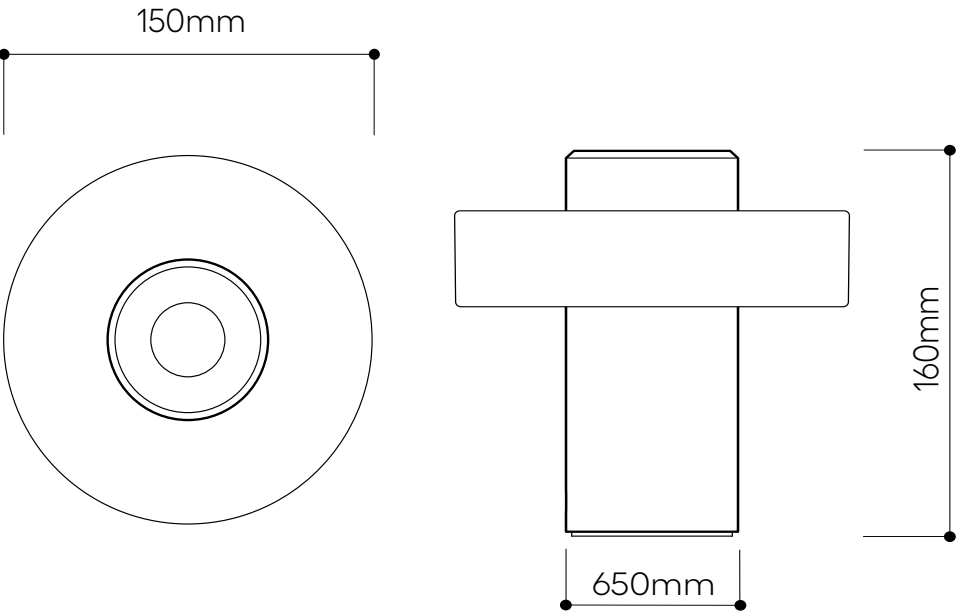
TECHNICAL SHEET
FOR PORTABLE LIGHT FIXTURES

OLLO portable lamp

Design by
Václav Mlynář

Handmade glass attributes

All Bomma products are hand-made from mouth-blown lead-free crystal. Therefore any small bubbles, non-melts and irregularities in the glass are both proof and a characteristic feature of this traditional craft.



LIGHTING DESCRIPTION

| | |
|-----------------|-----------------------------------------------------------------------------------------------|
| Size | mounting dia. 65mm/2.5 in, glass dia. 150mm/5.9 in overall 150mm/5.9 in, height 160 mm/6.3 in |
| Mounting | brushed silver, brushed anthracite, brushed bronze |
| Material | stainless steel |
| Glass | cast lead-free crystal glass |
| Glass colour | crystal clear |
| Weight | + 2.3 kg / 5.1 lb |
| Protection | IP 44 |
| Battery | Li-Ion battery 4.2V 9000mA / 31Wh |
| | LED battery status control 25% 50% 75% 100% |
| | 10 hours at 75% brightness |
| Charging | USB-C quick charge, ~ 3,5h till full charge |
| Nominal Voltage | 5V / 2A / 10W |
| | cable is not included, charger is not included |

LIGHT SOURCE

| | |
|-------------------|-------------------------------------|
| Type | LED module ring – 4W |
| Base | custom LUMILEDS LUXEON 3030 HE Plus |
| Temperature | tunable white 1850 - 4000 K |
| Luminous Flux | 784 lm |
| Luminous Efficacy | 196 lm/W |
| Color index | RA 90+ |
| Dimming | integrated rotary knob |

PACKAGING

| | |
|-------------------------------------------------------------------------------------------------------------------------------------------------------------|--------------------------------------------|
| Material | Cardboard |
| Size | 220 × 220 × 250 mm 8.6 × 8.6 × 9.8 inch |
| Origin: traditionally produced in the Czech Republic Intellectual property license holder: Bomma Czech Republic (EU) Represented by BMRC group s.r.o. | |

