

BONALDO

Flatiron coffee table

Designer: Mauro Lipparini

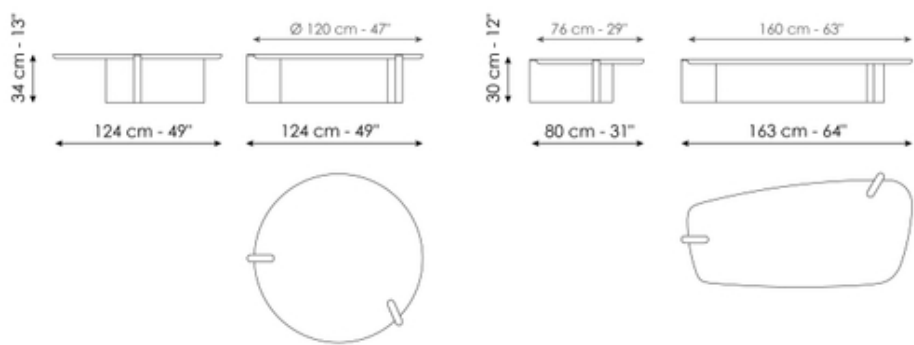


The Flatiron designer coffee tables by Mauro Lipparini explore the concept of fluidity of lines. The design fits into the architectural language used by this family of tables and desks in which the softness of the shapes is reworked with expressive coherence: the legs, consisting of two vertical panels, are arranged asymmetrically, amplifying the relationship between aesthetics and function.

The shape of the top adds dynamism to the structure, giving the table a fluid movement that enhances its geometric purity. The choice of proportions of these contemporary coffee tables, together with the simplicity of the volumes, guarantees a balance that enhances the spatial composition.

The versatility of the collection is expressed through the possibility of using the tables in pairs, creating configurations that either enter into dialogue with the surrounding environment, or which act individually, where each element takes on an independent sculptural value. Available in two heights and with round or trapezoidal tops, the Flatiron coffee tables adapt to a wide variety of different design scenarios, shaping the space in an entirely natural way.

Data sheet



Flatiron coffee table 120

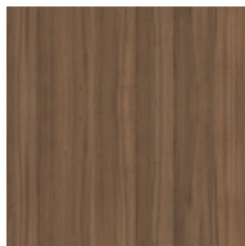
Width: 124cm
Depth: 124cm
Height: 34cm

Flatiron coffee table 160

Width: 163cm
Depth: 80cm
Height: 30cm

Finishes

Top



Veneered wood
Walnut Canaletto



Veneered wood
Coal oak

Base and Top edge

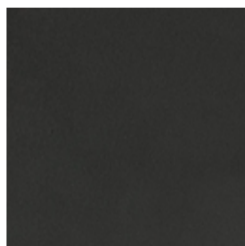


Lacquered wood
Mat bronze

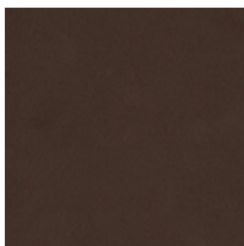


Lacquered wood
Mat lead

Insert



Painted metal
Mat lead



Painted metal
Mat bronze

Materials, fabrics, leathers, colors and finishes are approximate and may slightly differ from actual ones. You can find the complete collection of Bonaldo fabrics and leathers on the website <https://bonaldo.biz>