

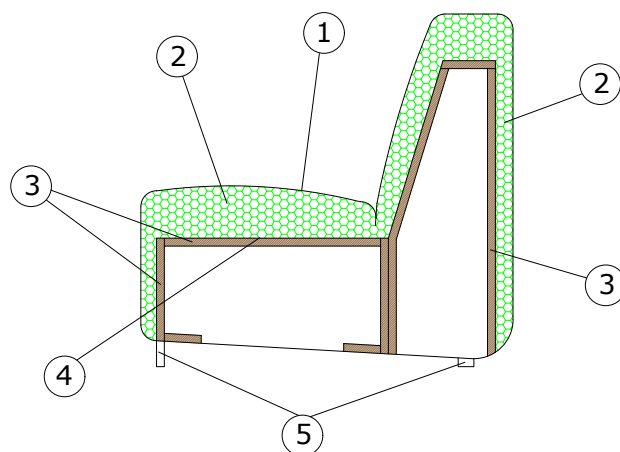


DESIGN **SIMONE MICHELI**

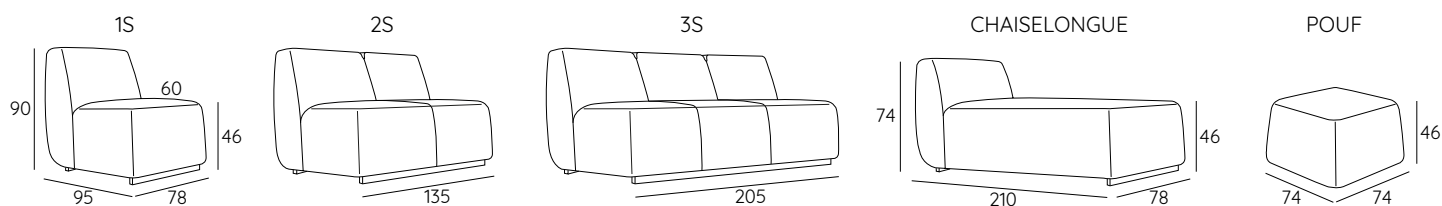
# NUDA



- 1 - dacron® fiber 100 gr;
- 2 - high resilience polyurethane foam of different densities;
- 3 - structural frame in solid firwood;
- 4 - elastic webbing;
- 5 - black varnished wooden frame-feet.







## DIMENSIONS



## FRAME



DESIGN **SIMONE MICHELI****NUDA****TECHNICAL DETAILS**

			 fabric mtl H 140 cm	 leather m <sup>2</sup>
NUDA 1S	34	0.69	3.80	7.07
NUDA 2S	48	1.19	6.00	11.16
NUDA 3S	56	1.80	8.50	15.81
NUDA CHAISELONGUE	54	1.80	6.00	11.16
NUDA POUF	15	0.26	3.10	5.77

**SUGGESTED FABRICS**

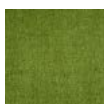
## Fabrics



LEMMING 29500



LUNA/Z CS



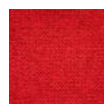
AMARA



MIRAGE



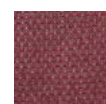
SPRINT



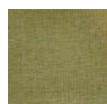
SOLE CS



NEMI MELANGE



ANGEL COMBO



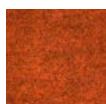
ANGEL CHEVY



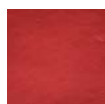
ANGEL JUMBO



EUROPOST 2



FENICE



VINTAGE



TIFFANY CONTRACT

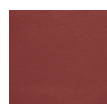


POLARIS PRO

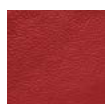


HAPPY

## Leathers



MOON



BASIC



RÈTRO

**PHOTO GALLERY**

Nuda armchair



Nuda 2 seater sofa



Nuda pouf