

Hos

Kengo Kuma

Conjunto. Set

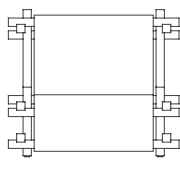


archiproducts
AWARDS
WINNER

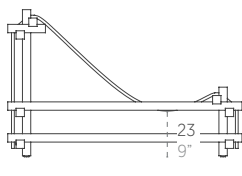
archiproducts
AWARDS
WINNER
SUSTAINABILITY



Medidas. Sizes



86
34"

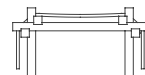


118
46"

28
11" | 35
14" | 74
29"



86
34"



68
27"

31
12" | 35
14"

Materiales. Materials

Madera de iroko.
Tejido 100% PET reciclado desenfundable para exterior.
Técnica de fabricación hand loom.

Iroko wood.
100% recycled PET fabric with removable cover for outdoor.
Hand-loom manufacturing technique.

Características. Characteristics

Hamaca y taburete. Deckchair and stool
PT38208
⚖ 18,5 Kg - 40.7 lbs
⚖ 8,5 Kg - 18.7 lbs

Caja. Box
1 ud/unit | 0,97 m³ - 34.30 ft³
1 ud/unit | 0,33 m³ - 11.50 ft³

Mantenimiento. Maintenance

Ver apartado de limpieza y mantenimiento
gandiablasco.com

See cleaning and maintenance section
gandiablasco.com

Nota. Note

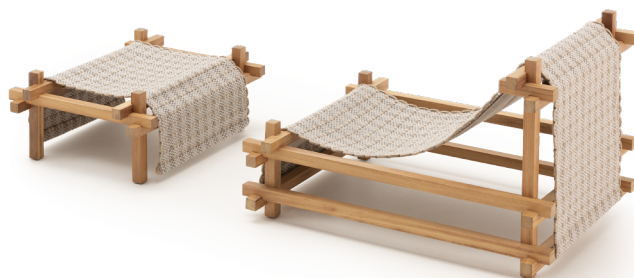
Esta colección se presenta como una edición limitada, comprendiendo una producción total de 300 conjuntos (100 de cada combinación de color).

This collection is presented as a limited edition, comprising a total production of 300 sets (100 of each color combination).

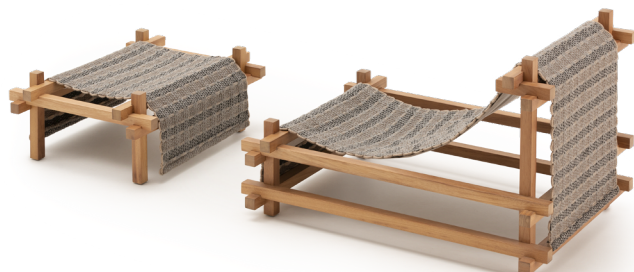
Ejemplos. Examples



SHITO-SHITO



SARA-SARA



MOYA-MOYA



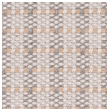
Colores y acabados. Colours and finishes

Iroko

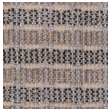


Iroko

Hand-loom outdoor fabric



Shito-Shito



Sara-Sara



Moya-Moya

Datos técnicos del tejido exterior. Outdoor fabric technical data

Composición de fibras. Fibre composition

100% PET reciclado. 100% recycled PET

Peso tela hamaca total aprox. Total deckchair fabric approx. weight

4 kg/m² - 8.8 lbs/ft²

Peso tela taburete total aprox. Total stool fabric approx. weight

2.5 kg/m² - 5.5 lbs/ft²

Espesor total aprox. Total approx. thickness

8 mm - 0.31"

Técnica de fabricación. Manufacturing technique

Telar manual. Hand loom

