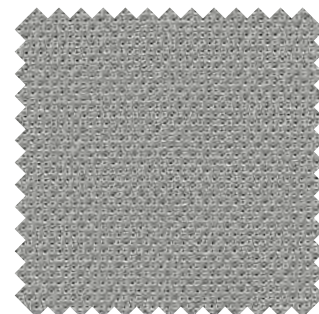


COLOURS AND FINISHES



ATLANTIC

Atlantic is designed with a straightforward, light structure and a discreet relief effect, which adds play and depth to both surface and colour. It is a strong base fabric with visual values ranging from quiet to fresh and sporty looks.



Specifications

- **Category B**
- **Composition** | 100% polyester
- **Weight** | 530 g/lm
- **Width** | 150 cm
- **Abrasion** | Martindale 110.000 turns EN ISO 12947-2; Double Rubs Wyzenbeek 100.000 turns ASTM D4157-07
- **Pilling** | Grade 4-5 EN ISO 12945-2; Grade 5 ASTM D3511
- **Light fastness** | Grade 5-7 EN ISO 105-B02; Grade 4-5 AATCC 16
- **Rubbing fastness** | Grade 4-5/4-5 (wet/dry) EN ISO 105x12; Grade 4-5/4-5 (wet/dry) AATCC 8 or 116
- **Flammability** | ASTM E 84 Class I; CA TB 117-2013 BS EN 1021-2 Match; BS EN 1021-1 Cigarette; ÖNORM B 3825-B1-3800-Q1 UK
- **Environment** | 100% recyclable polyester
- **Maintenance** | For normal maintenance and cleaning, use often the vacuum cleaner with appropriate part for fabric, and if necessary, cover the part with a soft cloth. For a deeper cleaning use a dry detergent for fabrics. Do not use anything petroleum based.
- **Labelling** | STANDARD 100 by OEKO-TEX®, EU Ecolabel®
- **Colours availability** | 14 standard colours - 42 total colours

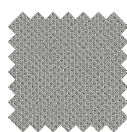
Colour scale



433 | Black



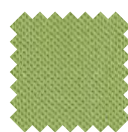
434 | Dark grey



435 | Grey



436 | Petroleum blue



437 | Green



438 | Orange



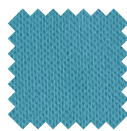
439 | Red



441 | Dark green



455 | Azure Grey



456 | Azure



457 | Deep blue



458 | Lime



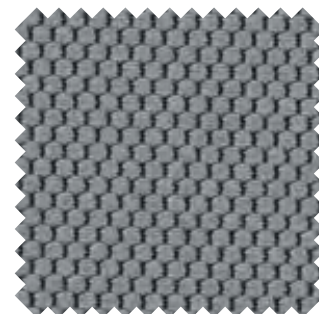
459 | Cadmium red



460 | Lilac

DRAGON

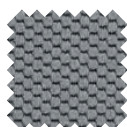
Dragon has wonderful colours which are inspired by the twilight's deep nuances. The 100% recyclable polyester is soft and comfortable with a two-tone discreet cubical structure.



Specifications

- **Category B**
- **Composition** | 100% polyester
- **Weight** | 380 g/lm
- **Width** | 140 cm
- **Abrasion** | Martindale 110.000 turns EN ISO 12947-2; Double Rubs Wyzenbeek 100.000 turns ASTM D4157-07
- **Pilling** | Grade 4-5 EN ISO 12945-2; Grade 5 ASTM D3511
- **Light fastness** | Grade 5-6 EN ISO 105-B02; Grade 4-5 AATCC 16
- **Rubbing fastness** | Grade 4-5/4-5 (wet/dry) EN ISO 105x12; Grade 4-5/4-5 (wet/dry) AATCC 8 or 116
- **Flammability** | BS EN 1021-1 Cigarette; BS EN 1021-2 Match; BS 5852 Part 1 0-1 Cigarette & match; BS 5852 Crib 5; CA TB 117-2013; DIN 4102 B1; ÖNORM B 3825-B1-3800-Q1 UK
- **Environment** | 100% recyclable polyester
- **Maintenance** | For normal maintenance and cleaning, use often the vacuum cleaner with appropriate part for fabric, and if necessary, cover the part with a soft cloth. For a deeper cleaning use a dry detergent for fabrics. Do not use anything petroleum based.
- **Labelling** | STANDARD 100 by OEKO-TEX®
- **Colours availability** | 7 standard colours - 21 total colours

Colour scale



375 | Blue grey



377 | Black



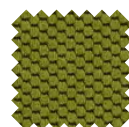
378 | Greige



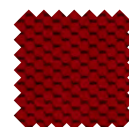
386 | Medium grey



387 | Graphite



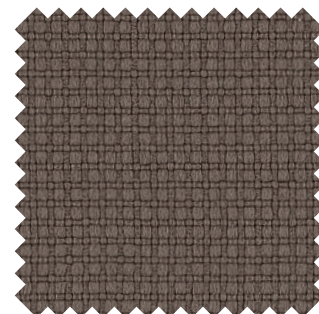
389 | Green



390 | Red

RELAX FLEX

Relax Flex is an elastic three-dimensional fabric made with the non-flammable yarn Trevira CS.



Specifications

- **Category B**
- **Composition** | 100% polyester Trevira CS
- **Weight** | 450 g/lm
- **Width** | 140 cm
- **Abrasion** | Martindale 100.000 turns EN ISO 12947-2
- **Pilling** | Grade 5 EN ISO 12945-2
- **Light fastness** | Grade 6 EN ISO 105-B02
- **Rubbing fastness** | Grade 5 EN ISO 105x12
- **Flammability** | BS 7176 Class Medium Hazard; BS Crib 5; CA TB117-2013; DIN 4102 Class B1; EN 1021-1 & 2; EN 13773 Class 1; IMO Part 8 Upholstery; NF 92501-7 Class M1; NF D 60013 Class AM18; ÖNORM 3800-1 Class B1, Q1, TR1; UNI 9174 - 8456 Class C1; UNI 9175 Class 1 IM; USA NFPA 701; USA NFP 260
- **Environment** | 100% recyclable polyester
- **Maintenance** | Brush any substantial, encrusted marks by hand, using a brush or spatula, then vacuum clean. Pre-clean with a neutral universal agent (incl. Possibility dry foam as well). After each cleaning remove any residual surfactant, using spray extraction.
- **Labelling** | STANDARD 100 by OEKO-TEX®, EU Ecolabel®, TREVIRA CS®
- **Colours availability** | 10 standard colours - 24 total colours

Colour scale



224 | Green grey



225 | Turtle-dove



226 | Dark brown



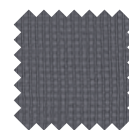
230 | Azure



231 | Blue



233 | Black



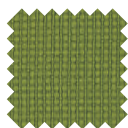
234 | Grey



258 | Red



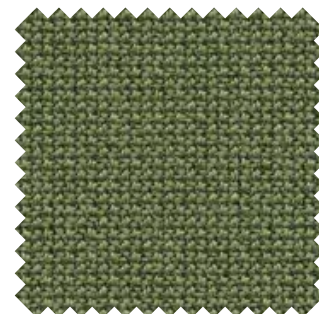
289 | Orange



290 | Green

CURA

Cura is a multi-purpose, two-coloured upholstery fabric made from 98% post-consumer recycled polyester. Use Cura for office furniture or lounge seating to transform workplaces into homey interiors.



Specifications

- **Category C**
- **Composition** | 98% post-consumer recycle polyester/ 2% polyester
- **Weight** | 420 g/lm
- **Width** | 140 cm
- **Abrasion** | Martindale 100.000 turns EN ISO 12947-2; Double Rubs Wyzenbeek 100.000 turns ASTM D4157-07
- **Pilling** | Grade 4-5 EN ISO 12945-2; Grade 5 ASTM D3511
- **Light fastness** | Grade 5-8 EN ISO 105-B02; Grade 5 AATCC 16
- **Rubbing fastness** | Grade 4-5/4-5 (wet/dry) EN ISO 105x12; Grade 5/5 (wet/dry) AATCC 8 or 116
- **Flammability** | BS EN 1021 1&2 Cigarette and match; BS 5852 Part 1 0-1 Cigarette&match; CA TB 117-2013
- **Environment** | 98% recycled post-consumer polyester; 100% recyclable polyester
- **Maintenance** | For normal maintenance and cleaning, use often the vacuum cleaner with appropriate part for fabric, and if necessary, cover the part with a soft cloth. For a deeper cleaning use a dry detergent for fabrics. Do not use anything petroleum based.
- **Labelling** | STANDARD 100 by OEKO-TEX®, EU Ecolabel®
- **Colours availability** | 8 standard colours - 36 total colours

Colour scale



570 | Medium grey



571 | Grey blue



572 | Black



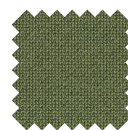
573 | Dark grey



574 | Blue



575 | Azure



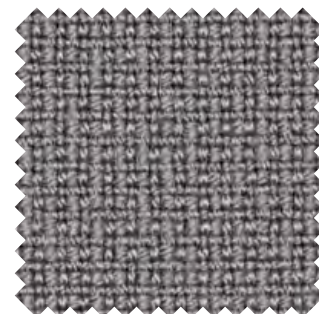
576 | Green



577 | Avio

FAME

Fame is a unique woollen upholstery fabric with a wearability of 200,000 Martindale, and at the same time is extra soft and stretchable. The colour scale is very elegant and vibrant.



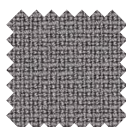
Specifications

- **Category C**
- **Composition** | 95% New Zealand wool / 5% polyamide
- **Weight** | 630 g/lm
- **Width** | 140 cm
- **Abrasion** | Martindale 200.000 turns EN ISO 12947-2; Martindale 140.000 turns ASTM D4966-02
- **Pilling** | Grade 4 EN ISO 12945-2; Grade 3-4 ASTM D4970
- **Light fastness** | Grade 5-7 EN ISO 105-B02; Grade 4 AATCC 16
- **Rubbing fastness** | Grade 4-5/4-5 (wet/dry) EN ISO 105x12; Grade 4-5/5 (wet/dry) AATCC 8 or 116
- **Flammability** | AM 18 - NF D 60-013; BS EN 1021-1 Cigarette; BS EN 1021-2 Match; BS 476 Part 7 class 1; BS 5852 Crib 5; BS 5852 Part 1 0-1 Cigarette & match; CA TB 117-2013; IMO MSC 307(88) Annex 1 part 8; MED Certificate IMO; ÖNORM B 3825-B1-3800-Q1 UK; UNI 9175 Class 1 | EMME
- **Environment** | Environmentally friendly
- **Maintenance** | For normal maintenance and cleaning, use often the vacuum cleaner with appropriate part for fabric, and if necessary, cover the part with a soft cloth. For a deeper cleaning use a dry detergent for fabrics. Do not use anything petroleum based.
- **Labelling** | STANDARD 100 by OEKO-TEX®, EU Ecolabel®
- **Colours availability** | 7 standard colours - 60 total colours

Colour scale



F26 | Dark red



F28 | Light grey



F29 | Petroleum blue



F44 | Grey



F54 | Dark orange



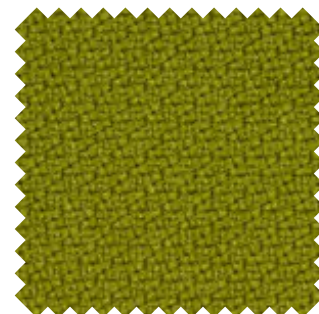
F55 | Graphite



F99 | Black

STEP

Step is unique in both texture and performance. With its delicate surface, Step is perceived as vivid and interesting.



Specifications

- **Category C**
- **Composition** | 100% Trevira CS
- **Weight** | 470 g/lm
- **Width** | 140 cm
- **Abrasion** | Martindale 100.000 turns EN ISO 12947-2; Double Rubs Wyzenbeek 100.000 turns ASTM D4157-07
- **Pilling** | Grade 4-5 EN ISO 12945-2; Grade 4-5 ASTM D3511
- **Light fastness** | Grade 5-7 EN ISO 105-B02; Grade 4-5 AATCC 16
- **Rubbing fastness** | Grade 4-5/4-5 (wet/dry) EN ISO 105x12; Grade 4-5/4-5 (wet/dry) AATCC 8 or 116
- **Flammability** | AM 18 - NF D 60-013 (only for fabric); BS EN 1021-1 Cigarette; BS EN 1021 1&2 Cigarette and match; BS 5852 Part 1 0-1 Cigarette and match; BS 5852 Crib 5; BS 7176 Medium Hazard; CA TB 117-2013; DIN 4102 B1; DIN EN 13501-1 B-s1; FAR/JAR 25.853 (a) (i) (ii); IMO MSC 307(88) Annex 1 part 8; MED Certificate IMO; NFP 92-503/504/505 M1; ÖNORM B 3825-B1-3800-Q1 UK; UNI 9175 Class 1 | EMME
- **Environment** | n/a
- **Maintenance** | First absorb as much of the liquid as possible with plain white kitchen paper towelling or a cloth. If the spot has dried, remove as much as possible by vacuuming. Rub gently with a clean white cloth. Press a dry tea towel or piece of plain white kitchen roll against the fabric each time liquid is added so that moisture and impurities are absorbed. Use pure water without soap for the last washing.
- **Labelling** | STANDARD 100 by OEKO-TEX®, EU Ecolabel®, Trevira CS®
- **Colours availability** | 8 standard colours - 57 total colours

Colour scale



346 | Black



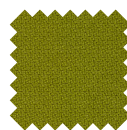
348 | Graphite



349 | Brick



356 | Red



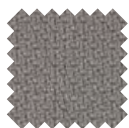
357 | Green



358 | Orange



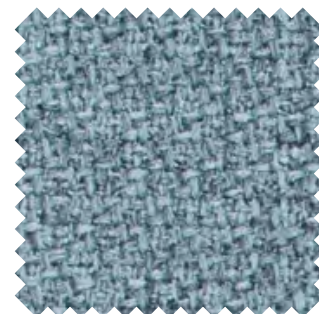
362 | Avio



366 | Grey

STEP MELANGE

There's something quite sensuous about Step Melange which, with its two nuances, makes the eyes explore and the hands wander over the voluminous fabric.



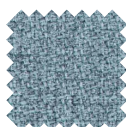
Specifications

- **Category C**
- **Composition** | 100% Trevira CS
- **Weight** | 470 g/lm
- **Width** | 140 cm
- **Abrasion** | Martindale 100.000 turns EN ISO 12947-2; Double Rubs Wyzenbeek 100.000 turns ASTM D4157-07
- **Pilling** | Grade 4-5 EN ISO 12945-2; Grade 5 ASTM D3511
- **Light fastness** | Grade 5-7 EN ISO 105-B02; Grade 4-5 AATCC 16
- **Rubbing fastness** | Grade 4-5/4-5 (wet/dry) EN ISO 105x12; Grade 4-5/4-5 (wet/dry) AATCC 8 or 116
- **Flammability** | AM 18 - NF D 60-013 (only for fabric); BS EN 1021 1&2 Cigarette and match; BS EN 1021-1 Cigarette; BS 5852 Part 1 0-1 Cigarette and match; BS 5852 Crib 5; BS 7176 Medium Hazard; CA TB 117-2013; DIN 4102 B1; DIN EN 13501-1 B-s1; FAR/JAR 25.853 (a) (i) (ii); IMO MSC 307(88) Annex 1 part 8; MED Certificate IMO; ÖNORM B 3825-B1-3800-Q1 UK; UNI 9175 Class 1 | EMME
- **Environment** | n/a
- **Maintenance** | First absorb as much of the liquid as possible with plain white kitchen paper towelling or a cloth. If the spot has dried, remove as much as possible by vacuuming. Rub gently with a clean white cloth. Press a dry tea towel or piece of plain white kitchen roll against the fabric each time liquid is added so that moisture and impurities are absorbed. Use pure water without soap for the last washing.
- **Labelling** | STANDARD 100 by OEKO-TEX®, EU Ecolabel®; TREVIRA CS®
- **Colours availability** | 8 standard colours - 54 total colours

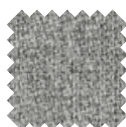
Colour scale



30A | Green



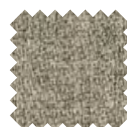
30B | Azure



30C | Light grey



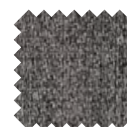
30D | Blue grey



30E | Beige



30F | Clay



30G | Dark grey



30L | Brick

SOTEGA

High quality upholstery fabric with soft nappa finish and a classic leather grain. Due to its natural look and touch one can hardly differentiate between this material and genuine leather.



Specifications

- **Category C**
- **Composition** | 1% PU-finish / 73% PVC-compound / 26% CO-fabric
- **Weight** | 780 g/lm
- **Width** | 150 cm
- **Abrasion** | Martindale 50.000 turns EN ISO 5470-2
- **Pilling** | n/a
- **Light fastness** | Grade 5 EN ISO 105-B02
- **Rubbing fastness** | n/a
- **Flammability** | n/a
- **Environment** | No AZO, Ca, FCKW; No PCP, PCB, PCT; No CH2O Formaldehyde
- **Maintenance** | For durable joy please clean regularly. Clean with warm water or a mild soap sud and a micro-fibre cloth or a soft hand brush. Stain caused by oil, fat or ink must be removed immediately. Do not use solvents, chloride, abrasive, chemical cleaning agents or wax polishes.
- **Labelling** | n/a
- **Colours availability** | 10 standard colours - 25 total colours

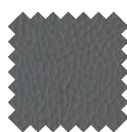
Colour scale



501 | Black



502 | Anthracite



503 | Medium grey



505 | Light grey



506 | Cherry



507 | Dark brown



509 | White



510 | Beige



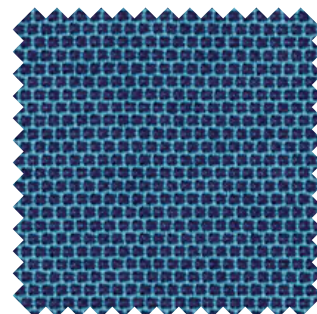
511 | Cappuccino



512 | Clay

SWING

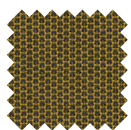
Swing is inspired by the world of handicrafts. It is woven of New Zealand wool and recycled polyester and its geometric structure creates a wonderful, living impression.



Specifications

- **Category C**
- **Composition** | 54% New Zealand wool / 44% post consumer
- **Weight** | 430 g/lm
- **Width** | 140 cm
- **Abrasion** | Martindale 100.000 turns EN ISO 12947-2; Martindale 100.000 turns ASTM D4966-02
- **Pilling** | Grade 4-5 EN ISO 12945-2; Grade 5 ASTM D4970
- **Light fastness** | Grade 5-7 EN ISO 105-B02; Grade 5 AATCC 16
- **Rubbing fastness** | Grade 4-5/4-5 (wet/dry) EN ISO 105x12; Grade 5/5 (wet/dry) AATCC 8 or 116
- **Flammability** | BS EN 1021-1 Cigarette; BS EN 1021 1&2 Cigarette and Match; BS 5852 Part 1 0-1 Cigarette & match; CA TB 117-2013
- **Environment** | Woven from wool and post-consumer recycled polyester
- **Maintenance** | Wool is antistatic and does not attract dirt like other fabrics. Wool is also water repellent, so spillages are slow to penetrate the fabric. To maintain the beautiful colour and appearance of the fabric, we recommend gentle vacuuming, preferably every week, with a soft nozzle. Most stains and dirt can be removed using an ordinary pH-neutral detergent diluted in lukewarm water at normal strength.
- **Labelling** | STANDARD 100 by OEKO-TEX®, EU Ecolabel®
- **Colours availability** | 13 standard colours - 29 total colours

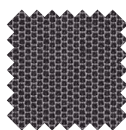
Colour scale



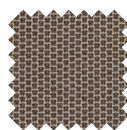
787 | Olive green



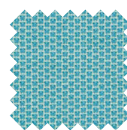
788 | Avio



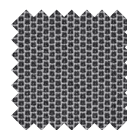
789 | Dark grey



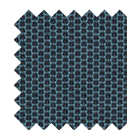
792 | Greige



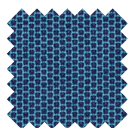
793 | Light blue



794 | Medium grey



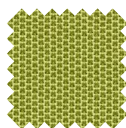
795 | Blue black



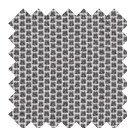
796 | Blue azure



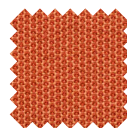
797 | Black



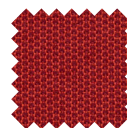
798 | Green



799 | Light grey



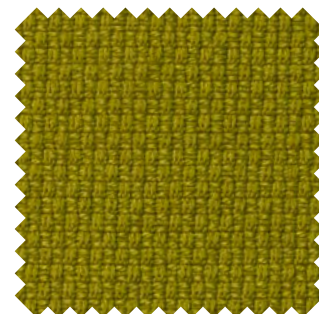
805 | Orange



806 | Red

BREEZE

Breeze is all round modern fabric with remarkable high abrasion resistance.



Specifications

- **Category F**
- **Composition** | 92% New Zealand wool / 8% polyamide
- **Weight** | 600 g/lm
- **Width** | 140 cm
- **Abrasion** | Martindale 200.000 turns EN ISO 12947-2; Martindale 100.000 turns ASTM D4966-02
- **Pilling** | Grade 4 EN ISO 12945-2; Grade 4-5 ASTM D4970
- **Light fastness** | Grade 5-7 EN ISO 105-B02; Grade 4-5 AATCC 16
- **Rubbing fastness** | Grade 4-5/4-5 (wet/dry) EN ISO 105x12; Grade 5/4-5 (wet/dry) AATCC 8 or 116
- **Flammability** | BS EN 1021-1 Cigarette; BS EN 1021 1&2 Cigarette & match; BS 5852 Part 1 0-1 Cigarette & match; CA TB 117-2013; UNI 9175 Class 1 | EMME
- **Environment** | n/a
- **Maintenance** | Wool is antistatic and does not attract dirt like other fabrics. Wool is also water repellent, so spillages are slow to penetrate the fabric. To maintain the beautiful colour and appearance of the fabric, we recommend gentle vacuuming, preferably every week, with a soft nozzle. Most stains and dirt can be removed using an ordinary pH-neutral detergent diluted in lukewarm water at normal strength.
- **Labelling** | STANDARD 100 by OEKO-TEX®, EU Ecolabel®
- **Colours availability** | 9 standard colours - 30 total colours

Colour scale



702 | Black



703 | Graphite



704 | Warm grey



705 | Blue grey



708 | Red



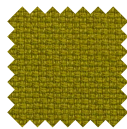
711 | Light grey



823 | Azure grey



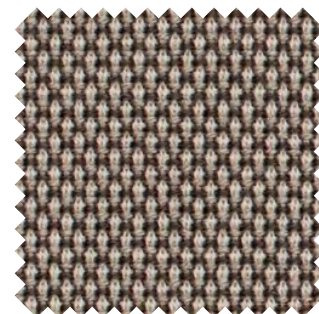
727 | Dark grey



728 | Lime

BREEZE FUSION

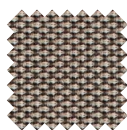
Breeze Fusion is a richly textured, woollen upholstery fabric brought to life by intriguing colour blends. It offers superior durability, inherent fire resistance and a strong environmental profile.



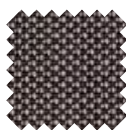
Specifications

- **Category F**
- **Composition** | 88% New Zealand wool / 12% polyamide
- **Weight** | 590 g/lm
- **Width** | 140 cm
- **Abrasion** | Martindale 100.000 turns EN ISO 12947-2; Martindale 100.000 turns ASTM D4966-02
- **Pilling** | Grade 4-5 EN ISO 12945-2; Grade 5 ASTM D4970
- **Light fastness** | Grade 5-7 EN ISO 105-B02; Grade 5 AATCC 16
- **Rubbing fastness** | Grade 4-5/4-5 (wet/dry) EN ISO 105x12; Grade 4-5/4-5 (wet/dry) AATCC 8 or 116 crocking
- **Flammability** | BS EN 1021 1&2 Cigarette and match; BS 5852 Part 1 0-1 Cigarette & match; CA TB 117-2013
UNI 9175 Class 1 | EMME
- **Environment** | n/a
- **Maintenance** | Wool is antistatic and does not attract dirt like other fabrics. Wool is also water repellent, so spillages are slow to penetrate the fabric. To maintain the beautiful colour and appearance of the fabric, we recommend gentle vacuuming, preferably every week, with a soft nozzle. Most stains and dirt can be removed using an ordinary pH-neutral detergent diluted in lukewarm water at normal strength.
- **Labelling** | STANDARD 100 by OEKO-TEX®, EU Ecolabel®
- **Colours availability** | 8 standard colours - 44 total colours

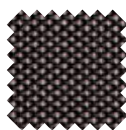
Colour scale



742 | Beige grey



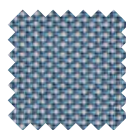
743 | Grey brown



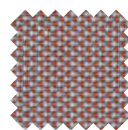
744 | Grey graphite



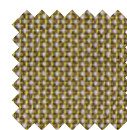
745 | Graphite black



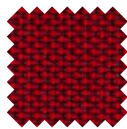
746 | Grey azure



747 | Grey orange



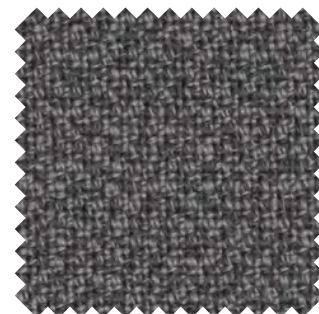
748 | Grey green



749 | Red burgundy

FAME HYBRID

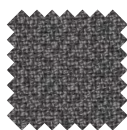
Fame Hybrid is a beautifully nuanced two-tone fabric with a fascinating colour. It is a partner to the popular woollen fabric Fame.



Specifications

- **Category F**
- **Composition** | 95% New Zealand wool / 5% polyamide
- **Weight** | 630 g/lm
- **Width** | 140 cm
- **Abrasion** | Martindale 150.000 turns EN ISO 12947-2; Martindale 100.000 turns ASTM D4966-02
- **Pilling** | Grade 4 EN ISO 12945-2; Grade 4-5 ASTM D4970
- **Light fastness** | Grade 5-7 EN ISO 105-B02; Grade 4 AATCC 16
- **Rubbing fastness** | Grade 4-5/4-5 (wet/dry) EN ISO 105x12; Grade 4-5/4-5 (wet/dry) AATCC 8 or 116
- **Flammability** | BS EN 1021 1&2 Cigarette and match; BS 5852 Part 1 0-1 Cigarette & match; CA TB 117-2013 MED Certificate IM0; UNI 9175 Class 1 | EMME
- **Environment** | Environmentally friendly
- **Maintenance** | Wool is antistatic and does not attract dirt like other fabrics. Wool is also water repellent, so spillages are slow to penetrate the fabric. To maintain the beautiful colour and appearance of the fabric, we recommend gentle vacuuming, preferably every week, with a soft nozzle. Most stains and dirt can be removed using an ordinary pH-neutral detergent diluted in lukewarm water at normal strength.
- **Labelling** | STANDARD 100 by OEKO-TEX®, EU Ecolabel®
- **Colours availability** | 4 standard colours - 19 total colours

Colour scale



766 | Grey



767 | Green lime



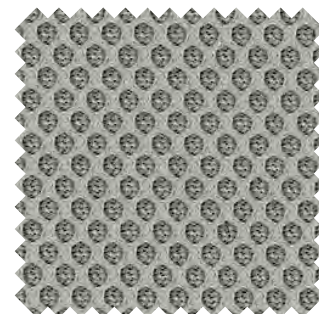
768 | Graphite black



769 | Orange brick

RUNNER

With its semi-transparent quality and soft 3D appearance Runner is a highly visual and eye-catching fabric. It is perfect for upholstering both furniture and screens.



Specifications

- **Category B**
- **Composition** | 100% polyester
- **Weight** | 510 g/lm
- **Width** | 160 cm
- **Abrasion** | Martindale 70.000 turns EN ISO 12947-2; Double Rubs Wyzenbeek 100.000 turns ASTM D4157-07
- **Pilling** | Grade 5 EN ISO 12945-2; Grade 5 ASTM D3511
- **Light fastness** | Grade 5-7 EN ISO 105-B02; Grade 4 AATCC 16
- **Rubbing fastness** | Grade 4-5/4-5 (wet/dry) EN ISO 105x12; Grade 4-5/4-5 (wet/dry) AATCC 8 or 116
- **Tensile strength** | n/a
- **Flammability** | BS EN 1021-1 Cigarette; BS EN 1021-2 Match; CA TB 117-2013; UNI 9175 class 2 | EMME
- **Environment** | 100% recyclable polyester
- **Maintenance** | For normal maintenance and cleaning, use often the vacuum cleaner with appropriate part for fabric, and if necessary, cover the part with a soft cloth. For a deeper cleaning use a dry detergent for fabrics. Do not use anything petroleum based.
- **Labelling** | STANDARD 100 by OEKO-TEX®, Cradle to Cradle Certified™ Bronze
- **Colours availability** | 10 standard colours - 24 total colours

Colour scale



824 | Black



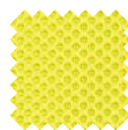
830 | Red



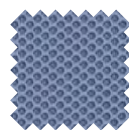
831 | Dark grey



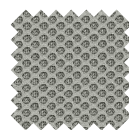
832 | Azure



833 | Lime



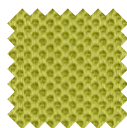
834 | Lilac



840 | Light grey



842 | Blue



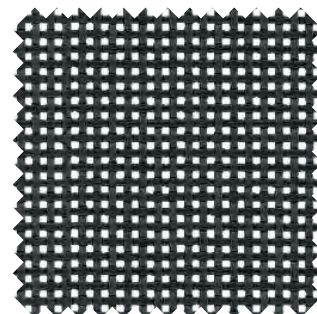
843 | Green



845 | Silver grey

MESH

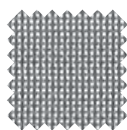
Fabric with high aesthetic value for design and comfort. Excellent dimensional stability and exceptional resistance to external conditions. Extreme tear resistance. Quick drying thanks to the open construction.



Specifications

- **Category N**
- **Composition** | 100% polyester
- **Weight** | 500 g/lm
- **Width** | 180 cm
- **Abrasion** | Martindale 120.000 turns EN ISO 12947-2
- **Pilling** | n/a
- **Light fastness** | Grade 4-5 EN ASTM G154
- **Rubbing fastness** | n/a
- **Tensile strength** | 240/240 daN/5 cm EN ISO 1421
- **Flammability*** | CA TB 117; DIN 4102-1 B1; EN 13501-1 B-s2,d0; NFP 92-507 M2
- **Environment** | 100% recyclable polyester
- **Maintenance** | For normal cleaning, dust mesh with vacuum cleaner or with a soft brush. In case of stains, wash with a soft brush or with a sponge using a solution of water and detergent, rinse a lot with water and let the mesh dry in open air.
- **Labelling** | Phthalate Free
- **Colours availability** | 6 standard colours - 33 total colours

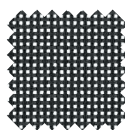
Colour scale



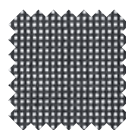
01N | Silver*



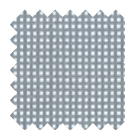
02N | White



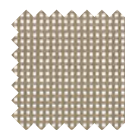
03N | Black



04N | Graphite



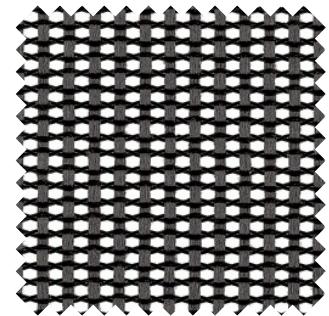
06N | Grey



07N | Beige

ELASTIC MESH

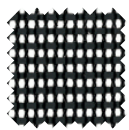
Elastic Mesh has a polyester co-polymer elastomeric monofilament on the warp direction. When stretched, this material yields excellent load bearing properties and resiliency.



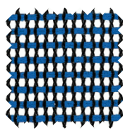
Specifications

- **Category X**
- **Composition** | 70% polyester elastomer / 30% polyester yarns
- **Weight** | n/a
- **Width** | 150 cm
- **Abrasion** | Double Rubs Wyzenbeek 50.000 turns ASTM D4157-07; Passed 50.000 cycles ASTM D 3597-95A sec. 7.4
- **Pilling** | Grade 5 ASTM D3511-82
- **Light fastness** | Grade 5 AATCC 16
- **Rubbing fastness** | Grade 5/4-5 (wet/dry) AATCC 8 or 116
- **Breaking strength** | 406.7/233.0 (Warp/Fill) ASTM D 5034-95
- **Flammability** | BS 5852 Part 1 0-1 Cigarette & match; CA TB 117-2013
- **Environment** | 100% recyclable polyester
- **Maintenance** | For normal cleaning, dust mesh with vacuum cleaner or with a soft brush. In case of stains, wash with a soft brush or with a sponge using a solution of water and detergent, rinse a lot with water and let the mesh dry in open air.
- **Labelling** | n/a
- **Colours availability** | 7 standard colours - 10 total colours

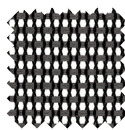
Colour scale



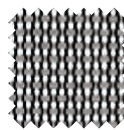
01 | Black



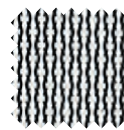
11 | Blue



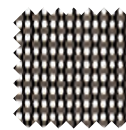
20 | Graphite



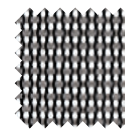
21 | Light grey



24 | White black



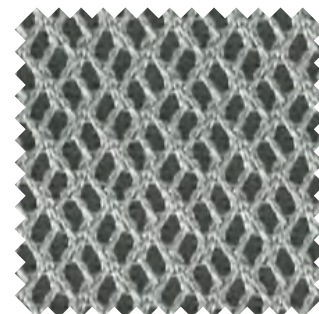
50 | Greige



55 | Turtle dove

RHYTHM

Rhythm is a unique, self-supporting mesh fabric with supreme fire-retardant performance.



Specifications

- **Category X**
- **Composition** | 100% polyester
- **Weight** | 525 g/lm
- **Width** | 160 cm
- **Abrasion** | Martindale 70.000 turns EN ISO 12947-2; Double Rubs Wyzenbeek 100.000 turns ASTM D4157-07
- **Pilling** | Grade 5 EN ISO 12945-2; Grade 5 ASTM D3511
- **Light fastness** | Grade 5-7 EN ISO 105-B02; Grade 4-5 AATCC 16
- **Rubbing fastness** | Grade 4-5/4-5 (wet/dry) EN ISO 105x12; Grade 5/5 (wet/dry) AATCC 8 or 116
- **Tensile strength** | n/a
- **Flammability** | BS EN 1021-1 Cigarette; BS EN 1021-2 Match; BS 5852 Part 1 0-1 Cigarette & match; BS 5852 Crib 5; BS 7176 Medium Hazard; CA TB 117-2013; DIN 4102 B1; NF P 92-503 M3; UNI 8456 class 1; UNI 9174 class 1
- **Environment** | n/a
- **Maintenance** | For normal maintenance and cleaning, use often the vacuum cleaner with appropriate part for fabric, and if necessary, cover the part with a soft cloth. For a deeper cleaning use a dry detergent for fabrics. Do not use anything petroleum based.
- **Labelling** | STANDARD 100 by OEKO-TEX®
- **Colours availability** | 9 standard colours - 16 total colours

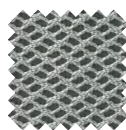
Colour scale



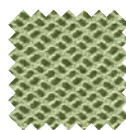
33R | Black



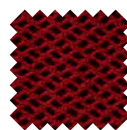
34R | Dark grey



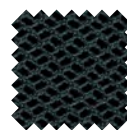
35R | Grey



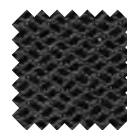
37R | Green



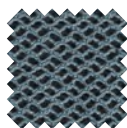
39R | Red



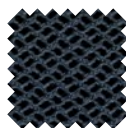
41R | Dark green



54R | Medium grey



55R | Azure grey



67R | Blue

LEATHER

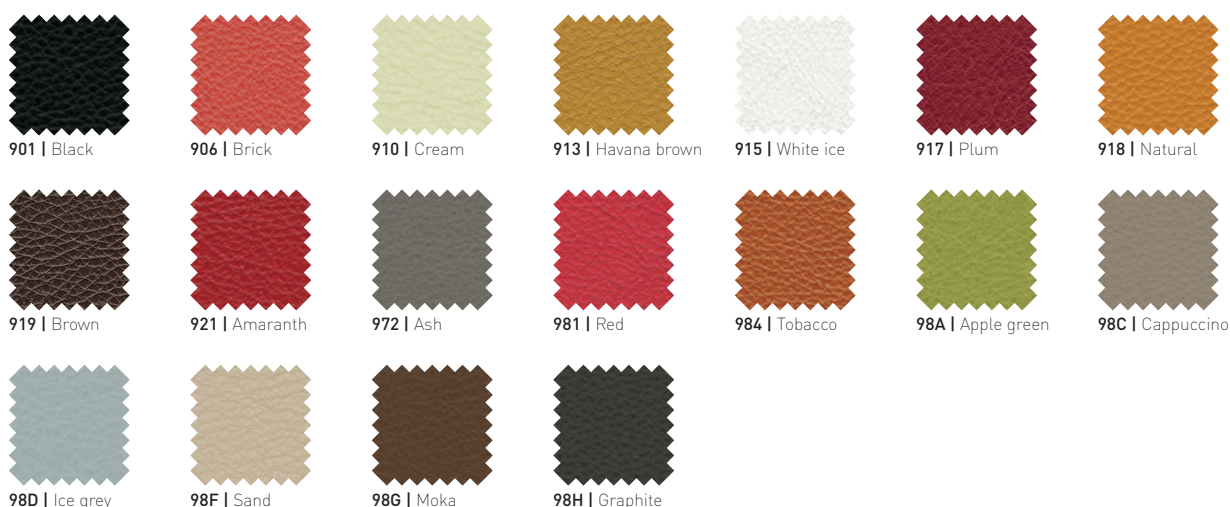
Aniline-dyed full grain leather with a silky touch. Wrinkles and scratches are visible and enhance its naturalness.



Specifications

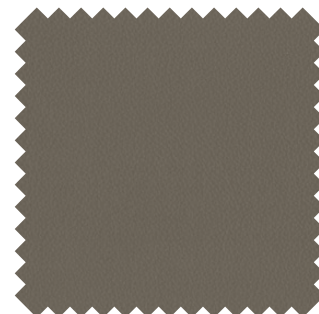
- **Category E**
- **Composition** | Full grain bovine leather
- **Type of leather** | Corrected grain, pre-embossed leather
- **Origin** | Europe
- **Average size** | 5,0/5,5 m²
- **Thickness** | 1,2/1,3 mm
- **Tannage** | Chrome tannage
- **Dyeing** | Aniline
- **Finishing** | Polyurethane
- **Colour fastness** | 4/5
- **Light fastness** | Grade 6 UNI EN ISO 105-B02
- **Rubbing fastness** | Grade 5/5 (wet/dry) UNI EN ISO 11644
- **Ultimate tensile strength** | 140 KG cm²
- **Tear resistance** | >20N UNI EN ISO 3377-1
- **Adhesion of finishing** | >2N/10mm UNI EN ISO 11644
- **Flex Resistance** | 20000 Cycles (no damage) UNI EN ISO 5402
- **Ph value and extract** | Ph ≥ 3,5; ΔpH ≤ 0,7 UNI ISO 4045
- **Azo-dyes** | Not present (<30 ppm) CEN ISO/TS 17234
- **Pentachlorophenol content** | < 5 ppm CEN/TS 14994
- **Hexavalent chromium content** | < 3,0 mg/kg CEN/TS 14495
- **Formaldehyde content** | < 75 ppm CEN ISO/TS 17226-1
- **Flammability** | n/a
- **Environment** | n/a
- **Maintenance** | To cancel marks and spills a damp cloth should be used adding, only when necessary, a solution made with particularly delicate products such as mild pure soap. Avoid to rub the leather surface; spills should be dabbed of proceeding from its limits towards its centre. Do not use aggressive abrasive products (solvent, spills removers) steam or products for leather shoes. Once the cleaning process is completed, its surface needs to be immediately dried using a soft, dry cloth.
- **Labelling** | n/a
- **Colours availability** | 18 standard colours - 19 total colours

Colour scale



PREMIUM LEATHER

Silky and smooth, compact and resistant, full and embracing. The Premium leather has an extremely full range for an infinite combination of colours.



Specifications

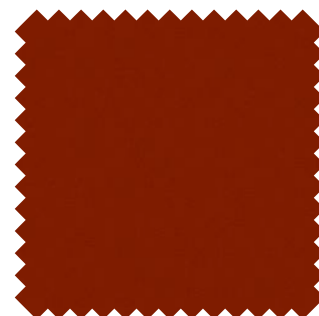
- **Category H**
- **Composition** | Full grain bovine leather
- **Type of leather** | Corrected grain
- **Origin** | Europe
- **Average size** | 5,0/5,5 m²
- **Thickness** | 1,2/1,4 mm
- **Tannage** | Chrome tannage
- **Dyeing** | Aniline
- **Finishing** | n/a
- **Colour fastness** | Grade 3-4 UNI EN ISO 11640
- **Light fastness** | Grade 6 UNI EN ISO 105-B02
- **Rubbing fastness** | Grade 3-4/4 (wet/dry) UNI EN ISO 11640
- **Ultimate tensile strength** | n/a
- **Tear resistance** | ≥20N UNI EN ISO 3377-1
- **Adhesion of finishing** | ≥2N/10mm UNI EN ISO 11644
- **Flex Resistance** | No cracks UNI EN ISO 5402
- **Ph value and extract** | Ph ≥ 3,5; ΔpH ≤ 0,7 UNI ISO 4045
- **Azo-dyes** | Not present (<30 ppm) CEN ISO/TS 17234
- **Pentachlorophenol content** | ≤ 1 mg/kg UNI EN ISO 17070
- **Hexavalent chromium content** | ≤ 3 mg/kg UNI EN ISO
- **Formaldehyde content** | < 75 ppm CEN ISO/TS 17226-1
- **Flammability** | UNI EN 1021-1 Cigarette, UNI EN 1021-2 Match, NFPA 260/UFAC, IMO Resolution A652 (16), California TB 117 Section E
- **Environment** | Environmental Product Declaration & Process EPD (ISO 14025), Carbon Footprint of Product (ISO/TS 14067:2013)
- **Maintenance** | To cancel marks and spills a damp cloth should be used adding, only when necessary, a solution made with particularly delicate products such as mild pure soap. Avoid to rub the leather surface; spills should be dabbed of proceeding from its limits towards its centre. Do not use aggressive abrasive products (solvent, spills removers) steam or products for leather shoes. Once the cleaning process is completed, its surface needs to be immediately dried using a soft, dry cloth.
- **Labelling** | Leather From Italy Full Cycle (UNI EN 16484), Der BLAue Engel (RAL UZ 148)
- **Colours availability** | 12 standard colours - 110 total colours

Colour scale



SADDLE LEATHER

In spite of the high strenght the Saddle Leather is keeping flat and elegant and stands out of its high charisma. It is beautiful soft and full breathable.



Specifications

- **Category S**
- **Composition** | Bovine leather
- **Type of leather** | Raw hides
- **Origin** | n/a
- **Average size** | n/a
- **Thickness** | 1,9/2,1 mm
- **Tannage** | Chrome tannage
- **Dyeing** | Aniline
- **Finishing** | Pigment finishing
- **Colour fastness** | n/a
- **Light fastness** | Grade 4-5 UNI EN ISO 105-B02
- **Rubbing fastness** | Grade 5/5 (wet/dry) UNI EN ISO 11640
- **Ultimate tensile strength** | n/a
- **Flex resistance** | 20.000 cycles no damage
- **Adhesion of finishing** | >15N/10mm UNI EN ISO 11644
- **Flex Resistance** | No cracks UNI EN ISO 5402
- **Abrasion** | Grade 4-5 500 cycles weel CS10 load 500gr
- **Ph value and extract** | n/a
- **Azo-dyes** | n/a
- **Pentachlorophenol content** | n/a
- **Hexavalent chromium content** | n/a
- **Formaldehyde content** | n/a
- **Flammability** | BS 5852: Source 0; UNI 9175 Class 2 IM
- **Environment** | n/a
- **Maintenance** | To cancel marks and spills a damp cloth should be used adding, only when necessary, a solution made with particularly delicate products such as mild pure soap. Avoid to rub the leather surface; spills should be dabbed of proceeding from its limits towards its centre. Do not use aggressive abrasive products (solvent, spills removers) steam or products for leather shoes. Once the cleaning process is completed, its surface needs to be immediately dried using a soft, dry cloth.
- **Labelling** | n/a
- **Colours availability** | 4 standard colours - 26 total colours

Colour scale



S01 | Black



S02 | White



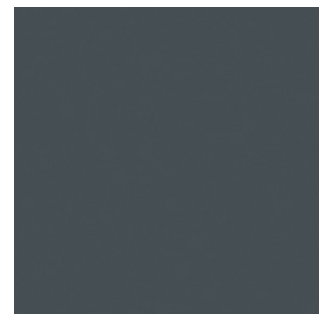
S03 | Dark brown



S05 | Bulgarian red

NYLON

High performance polyamide 6. In molded parts the material offers an excellent balance of easy design and processing with outstanding mechanical properties over a wide temperature range and in different conditions.



Specifications

- **Category P**
- **Composition** | Polyamide 6
- **Tensile modulus** | 3200 /1000 N/mm² (dry/cond) ISO 527-1/2
- **Yield stress** | 85 /45 N/mm² (dry/cond) ISO 527-1/2
- **Yield strength** | 4 /25 % (dry/cond) ISO 527-1/2
- **Nominal strain at break** | 20/>50 % (dry/cond) ISO 527-1/2
- **Flammability** | Class 2 UNI 9174; Class 1 UNI 9174 on request.
- **Maintenance** | For normal maintenance and cleaning, use a soft clean cloth damp with warm water and detergents or disinfectants not too alkaline. Wipe with a soft dry cloth or with absorbent paper. To obtain a better cleaning, vapour could be used.
- **Used in** | Finn Chair.
- **Colours availability** | 5 standard colours

Colour scale



115 | Black



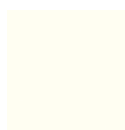
029 | Blue



030 | Aquamarine



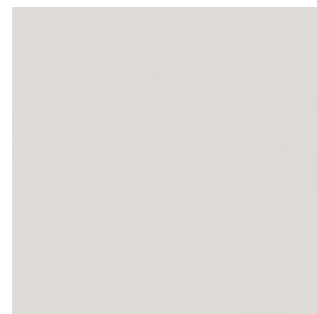
095 | Grey



100 | White

REINFORCED NYLON

High performance polyamide 6 GF30. The material offers an excellent balance of stiffness and toughness, good electrical and flammability properties, good abrasion and chemical resistance.



Specifications

- **Category P**
- **Composition** | Polyamide 6- 30% glass fibre reinforced.
- **Tensile modulus** | 9800 /5800 N/mm² (dry/cond) ISO 527-1/2
- **Yield stress** | 190 /115 N/mm² (dry/cond) ISO 527-1/2
- **Yield strength** | 3.5 /6 % (dry/cond) ISO 527-1/2
- **Environment** | The good melt stability of nylon resin normally enables the recycling of properly handled waste.
- **Maintenance** | For normal maintenance and cleaning, use a soft clean cloth damp with warm water and detergents or disinfectants not too alkaline. Wipe with a soft dry cloth or with absorbent paper. To obtain a better cleaning, vapour could be used.
- **Used in** | Pyla Chair.
- **Colours availability** | 3 standard colours.

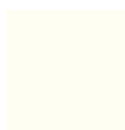
Colour scale



115 | Black



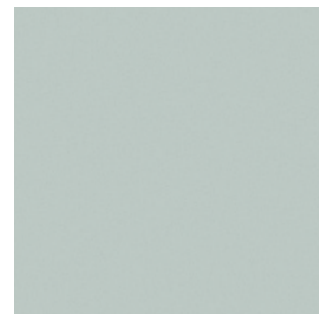
095 | Grey



100 | White

POLYURETHANE

Polyurethane (PU) is a synthetic foam material. The cellular structure of PU foams can be varied to meet different requirements, ranging from flexible, elastic materials to solid, rigid components.



Specifications

- **Category U**
- **Composition** | Integral self-skinning polyurethane foam.
- **Density** | 400 kg/m³
- **Tensile strength** | 11-70 kg/cm² DIN 53504
- **Tear strength** | 2-13 kg/cm DIN 53575
- **Elongation at break** | 130-140 % DIN 53504
- **Hardness at 23°C** | 65-70 Shore A ASTM D 2240
- **Compression Load Deflection (50%)** | 1,6 kg/cm² ASTM 2406/68
- **Flammability** | American FMVSS 302; CA TB 117-2013
- **Maintenance** | For normal maintenance and cleaning, use a soft clean cloth damp with warm water and detergents or disinfectants not too alkaline. Wipe with a soft dry cloth or with absorbent paper. To obtain a better cleaning, vapour could be used.
- **Colours availability** | 7 standard colours

Colour scale



115 | Black



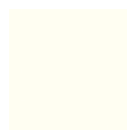
029 | Blue



030 | Aquamarine



095 | Grey



100 | White



R07 | Yellow



R06 | Red



ICF S.p.A.
Via Cassanese 108 - 20052 Vignate (MI) | Italy
t. +39 02 9508031 | f. +39 02 95364012
info@icf-office.it