

# Stick Quattro

Style and Originality



**ICF**

# Stick Quattro



The Stick Chair exemplifies the pinnacle of modern multipurpose seating, seamlessly blending efficient material usage, exceptional transparency, superior comfort, lightweight construction, and effortless handling. It sets new benchmarks in design, innovation, and quality, making it the ideal choice for office environments where both functionality and aesthetics are paramount.

The Stick Chair family integrates classic functional and structural elements into a cohesive range thoughtfully developed from the outset. Featuring various base options - including Skid, Stool, 4- and 5-Star, 4-Leg, and Cantilever bases - Stick Chairs offer comprehensive solutions for meeting rooms, visitor areas, conference settings, multipurpose zones, and private offices. The unified design language ensures visual harmony across different structures and finishes, enhancing any workspace seamlessly.

With its clean, essential lines, the Stick Chair Quattro presents the perfect combination of features of the modern multi-purpose chair, where practicality and functionality merge together to form a winning look. It retains the more important characteristics of the Stick line, enriched with details that make it particularly elegant. The four-legged aluminum base conveys an image of stability that intensifies thanks to the careful choice of materials.

The frame structure in die-cast aluminum, extremely robust and durable, gives elegance and makes this chair a refined choice for sophisticated representative spaces. The upholstery is made of a characteristic suspension in breathable elastic mesh or covered in fabric or leather and it is available in various colors that contribute to creating a fresh and light but highly professional environment. Stick Chair Quattro is perfect for furnishing meeting rooms, visitor areas, libraries, hotels and conference rooms.



Chromed structure and upholstery in fabric.



Painted structure and upholstery in fabric.



Chromed structure, seat and backrest fully upholstered in fabric.

## Stick Quattro | Technical Specification



**Structure:** Die-cast aluminum side elements and crosspieces elements fastened together. The resulting frame is a rigid structure able to maintain its shape even under conditions of considerable stress and also functions as a specific support for the elastic mesh and the fabric or leather padding. Available with low or high back and in three different finishes: polished, chromed or painted.

**Seat and backrest:** The seat and backrest are made of a single flexible sheet in elastic material, tensioned in suspension on the perimeter structure. The mesh sheet ensures full breathability and thorough air circulation and is available in nylon mesh (single-color - 75% vinyl resin, 25% polyester) or in elastic mesh (two-toned effect - 70% polyester elastomer, 30% polyester). The fabric or leather sheet is pressed onto a central layer of high-resistance technical material and two layers of flexible polyurethane. The leather covering includes an eco-leather back with predetermined color combinations.

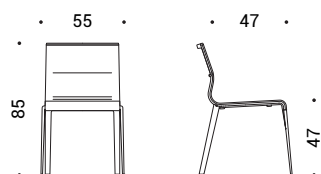
**Armrests:** Open shape armrests made of die-cast aluminum with finish depending on the structure and optional plastic cover. The armrests can be dismantled and replaced on site. Available also without armrests.

**Base:** Four legs base in die-cast aluminum with polished, chromed or painted finish.

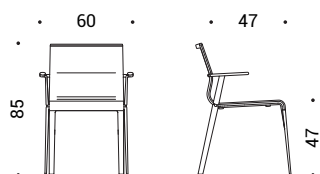
**Glides:** In polypropylene.

**Stackability:** Stackable up to 8 pieces with mesh cover and up to 4 pieces with fabric or leather cover.

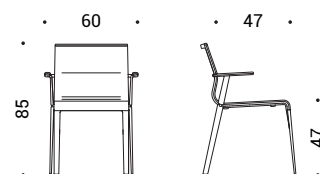
## Dimensions



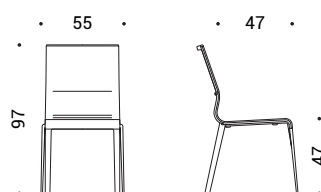
**ATK.800** | Chair 4 legs, backrest handle in aluminum



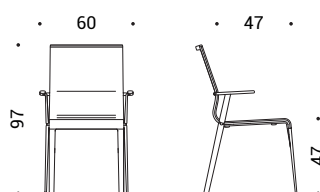
**ATK.852** | Chair 4 legs, backrest handle and armrests in aluminum



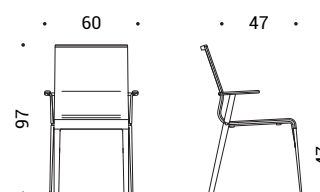
**ATK.850** | Chair 4 legs, backrest handle and armrests in aluminum with cover in plastic



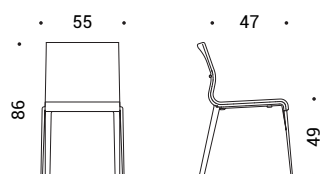
**ATK.820** | Chair 4 legs, backrest handle in aluminum



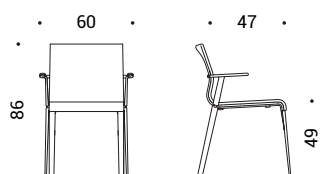
**ATK.872** | Chair 4 legs, backrest handle and armrests in aluminum



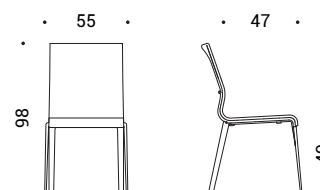
**ATK.870** | Chair 4 legs, backrest handle and armrests in aluminum with cover in plastic



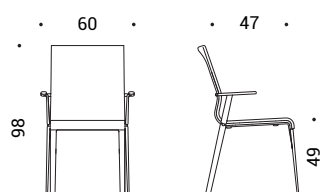
**ETK.800** | Chair 4 legs



**ETK.852** | Chair 4 legs, armrests in aluminum



**ETK.820** | Chair 4 legs



**ETK.872** | Chair 4 legs, armrests in aluminum

## Product Finishes

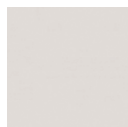
### Aluminum Structure | Structure, base, armrests



47 | Polished



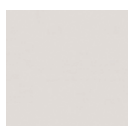
55 | Chromed

115 | Black  
Powder coated095 | Grey  
Powder coated100 | White  
Powder coated

### Plastic Material | Armrest cover



115 | Black

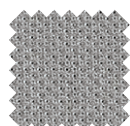
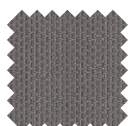
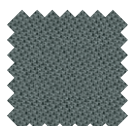
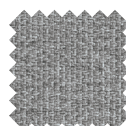
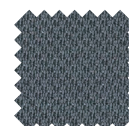
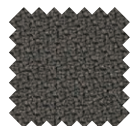
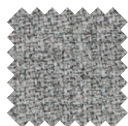
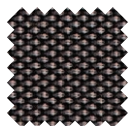
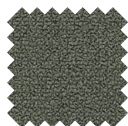


095 | Grey

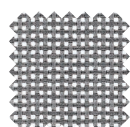
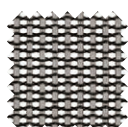


100 | White

### Fabric

Cat. B | Atlantic  
(17 colors)Cat. B | Mini  
(7 colors)Cat. B | Tonal  
(15 colors)Cat. C | Cura  
(15 colors)Cat. C | Mini Melange  
(9 colors)Cat. C | Sealife  
(10 colors)Cat. C | Sotega  
(5 colors)Cat. C | Step  
(8 colors)Cat. C | Step Melange  
(8 colors)Cat. F | Breeze Fusion  
(5 colors)Cat. F | Grain  
(10 colors)

### Mesh

Cat. N | Mesh  
(5 colors)Cat. X | Elastic Mesh  
(7 colors)Cat. E | Leather  
(15 colors)Cat. H | Premium Leather  
(10 colors)

### Leather

## Materials Certifications

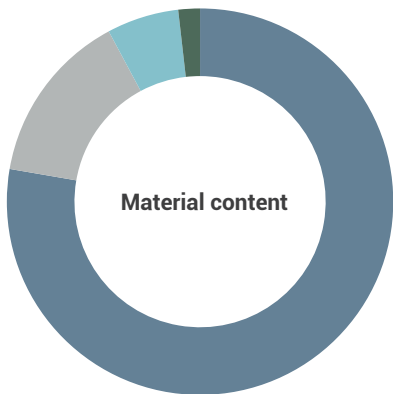
We use fabrics that guarantee high performance in terms of comfort, strength and sustainability. Attention to the health and safety of people and the environment are verified through globally-recognised product certification. Most of the upholstery we use for our seating collections is made from recycled materials which can also be reused at the end of their service life.



## Sustainability

Our design and production philosophy is based on the pursuit of simplicity in order to create sustainable and durable collections. Our products have an unmistakable design which however is subjected to the carefull evaluation of any possible aspects to improve sustainability, durability and recyclability in accordance with the highest international standards. We believe that our responsible approach may effectively reduce environmental impact of our products throughout the entire lifecycle of the various components. We do not use chemicals hazardous or dangerous to the environment, and the materials we use are tested and evaluated for potentially harmful effects on human health and the environment. Where possible, we reduce packaging materials to a minimum, which also optimises transport volume.

### Stick Quattro



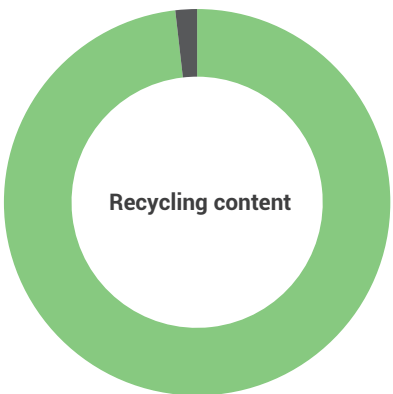
| Materials     |  | %             |
|---------------|--|---------------|
| Aluminum      |  | 78            |
| Plastic       |  | 14            |
| Metal         |  | 6             |
| Miscellaneous |  | 2             |
| <b>Total</b>  |  | <b>8.3 kg</b> |

The materials we select meet high quality standards, guaranteeing durable and eco-friendly products.

At ICF, we use:

- Ecological and/or post-consumer recycled materials;
- Products free from formaldehyde and toxic substances;
- Finishes free from hexavalent chromium.

Each component of the seat can be disassembled for repair, reuse and recycling.



|               |  | %  |
|---------------|--|----|
| Recycling     |  | 98 |
| Not recycling |  | 2  |

Stick Quattro is a chair weighing approximately 8.3 kg and approximately 98% recyclable when completely and correctly separated.

Stick Chair is conceived in accordance with the guidelines of eco-design, a technical methodology applied during design of a product in order to reduce that product's carbon footprint and environmental impact.

Note:

Material and Recycling content percentages may vary depending on the specific model evaluated and consequently of the structural materials and finishes of the considered model.

The above sustainability contents refer to model ATK.852.

## Certifications

- EN 16139:2013 - 1<sup>st</sup> level
- VOC Emission Test Report in compliance with AgBB (Mini and Mini Melange upholsterys)
- CAM (Mini and Mini Melange upholsterys)
- Leed V4/V4.1 Beta (Mini and Mini Melange upholsterys)
- Fire retardant Class 1 IM (Mini, Mini Melange, Step Melange, Sotega and Leather upholsterys)
- Fire retardant Class 1 (Mesh N upholstery)



ICF S.p.A.  
Via Cassanese, 108  
20052 Vignate (MI) Italy  
+39 02 9508031 Tel.  
+39 02 95364012 Fax  
[icf@icf-office.it](mailto:icf@icf-office.it)

ICF Milano  
P.tta U. Giordano, 2  
20122 Milano, Italy  
+39 02 76000583 Tel.  
+39 02 7601395 Fax  
[icf@icf-office.it](mailto:icf@icf-office.it)

[www.icf-office.it](http://www.icf-office.it)