

Cloud Chair

Design Equilibrium



ICF

Cloud Chair



"We believe that furniture design has a responsibility to help restore human equilibrium as much as possible. We've chosen to defy current trends by creating objects that are comfortable yet perceived as simple. It's an effort to introduce calm and serenity into environments that greatly need these qualities." Sottsass Associati

The Cloud Chair embodies a commitment to creating comfortable, visually simple seating that fosters a cool atmosphere in office spaces. Designed by Sottsass Associati, the Cloud Chair stands apart from highly technological options on the market, focusing instead on simplicity for well-being.

This responsive, versatile seating integrates functional design, technology, and elegance. The flexible upholstery of the seat and backrest conforms to the user's contours, distributes weight pressure evenly, and moves in harmony with the recline mechanism. The tilting mechanism promotes a healthy sitting posture, offering comfort and dynamism in any position. The seat and backrest angles align with modern ergonomic principles, ensuring a balanced swing that allows users to rest comfortably.

Cloud Chair represents a perfect synthesis of functionality and design, technology and elegance. With its significant presence and undeniable personality, the Cloud Chair conveys a sense of comfort where extraordinary attention to detail is paired with highly functional and effective individual adjustment mechanisms.

A chair that changes its character with different upholstery options. Whether important or vibrant, serious or cheerful, the extensive range of available meshes, fabrics and leathers allow the Cloud Chair to be customized with the personality you desire. An original finish option for the Cloud Chair features a bi-color elastic mesh, made of 70% polyester elastomer monofilament and 30% dyed polyester, which ensures breathability and heat exchange through its air-permeable structure.

The perimeter structure is made of aluminum profiles, while the load-bearing components are crafted from die-cast aluminum. This combination ensures that the structure is exceptionally rigid, maintaining its shape even under significant stress and providing robust support for the seat and backrest. It is available in three backrest heights and three finishes: polished, chromed, or painted.



Painted structure, seat upholstered in fabric or mesh, backrest in mesh.



Painted structure, upholstery in fabric.



Chromed structure, upholstery in leather.

Cloud Chair | Technical Specification



Structure: The perimeter structure is made of extruded aluminum, while the load-bearing components are in die-cast aluminum. The structure thus created is particularly rigid, maintains its shape even under considerable stress and supports the seat and backrest sheet. Available with three backrest heights and in three different finishes: polished, chromed or painted.

Seat and backrest: The sheet is available in mesh or upholstered in fabric or leather. The mesh sheet ensures full breathability and thorough air circulation and is available in nylon mesh (single-color - 75% vinyl resin, 25% polyester) or in elastic mesh (two-toned effect - 70% polyester elastomer, 30% polyester). The fabric or leather sheet is pressed onto a central layer of high-resistance technical material and two layers of flexible polyurethane. The sheet thus obtained has a series of characteristic horizontal stripes and it is suspended in order to distribute the body weight optimally.

Lumbar support: Made of black polyurethane foam, it automatically increases the tension of the sheet allowing to improve the support of the spine. Adjustable in height with a stroke of 6 cm. It can be installed or removed at any time.

Armrest: Fixed armrests available in two versions: open shaped "Task", suitable for operational and directional situations, made of die-cast aluminum with a polished, chromed or painted finish and support element in integral polyurethane which offers soft cushioning and is pleasant to the touch. Closed shaped "Meeting", suitable for meeting rooms and visitor seats, in die-cast aluminum with polished, chromed or painted finish.

Swivel mechanism: Multidirectional swivel movement.

Height adjustment: Seat height can be adjusted a maximum of 14 cm with a lever. The gaslift complies to EN16955:2017.

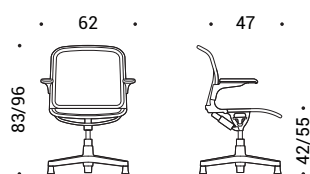
Tilt mechanism: Synchronized mechanism with individual adjustment knob of the back thrust based on the weight of the user. The backrest can be locked in a vertical position and in four intermediate positions.

Base: Four or five star base made of die-cast aluminum, with a polished, chromed or painted finish depending on the structure. Available with castors or plastic glides.

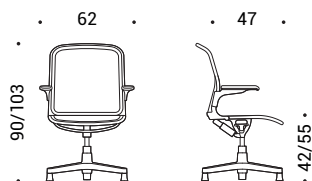
Castors: Standard castors in black plastic, diam. 65 mm, with soft running surface for use on hard flooring as marble, parquet, tiles in general and a load depending safety brake complies to EN 12529:2001. Castors with hard tread for carpet available on request.

Glides: In black nylon base and soft-plastic glide, diam. 37 mm.

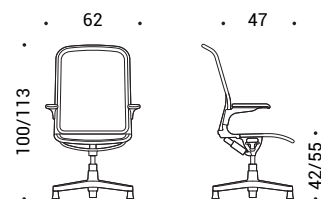
Dimensions



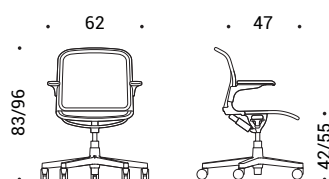
SAT.408 | swivel chair, height adjustable, unlockable tilting mechanism



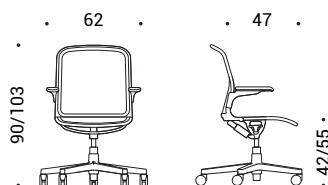
SAT.108 | swivel chair, height adjustable, unlockable tilting mechanism



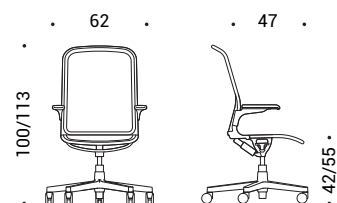
SAT.608 | swivel chair, height adjustable, unlockable tilting mechanism



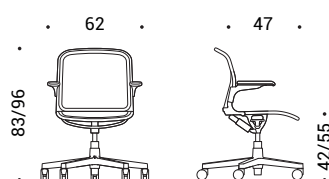
SAT.409 | swivel chair, height adjustable, unlockable tilting mechanism



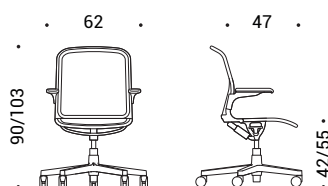
SAT.109 | swivel chair, height adjustable, unlockable tilting mechanism



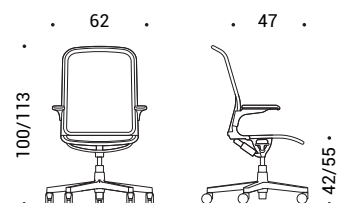
SAT.609 | swivel chair, height adjustable, unlockable tilting mechanism



SAT.417 | swivel chair, height adjustable, lockable tilting mechanism



SAT.117 | swivel chair, height adjustable, lockable tilting mechanism



SAT.617 | swivel chair, height adjustable, lockable tilting mechanism

Product Finishes

Aluminum Structure | Structure, base, armrests

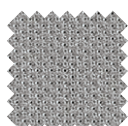
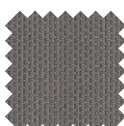
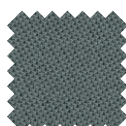
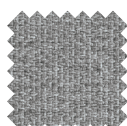
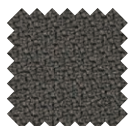
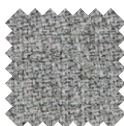
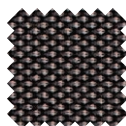
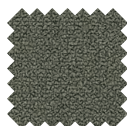


47 | Polished

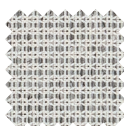


55 | Chromed

Fabric

Cat. B | Atlantic
(17 colors)Cat. B | Mini
(7 colors)Cat. B | Tonal
(15 colors)Cat. C | Cura
(15 colors)Cat. C | Mini Melange
(9 colors)Cat. C | Sealife
(10 colors)Cat. C | Sotega
(5 colors)Cat. C | Step
(8 colors)Cat. C | Step Melange
(8 colors)Cat. F | Breeze Fusion
(5 colors)Cat. F | Grain
(10 colors)

Mesh

Cat. X | Elastic Mesh
(7 colors)Cat. X | Tale
(15 colors)

Leather

Cat. E | Leather
(15 colors)

Materials Certifications

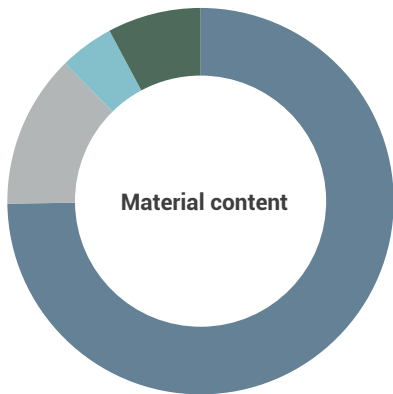
We use fabrics that guarantee high performance in terms of comfort, strength and sustainability. Attention to the health and safety of people and the environment are verified through globally-recognised product certification. Most of the upholstery we use for our seating collections is made from recycled materials which can also be reused at the end of their service life.



Sustainability

Our design and production philosophy is based on the pursuit of simplicity in order to create sustainable and durable collections. Our products have an unmistakable design which however is subjected to the carefull evaluation of any possible aspects to improve sustainability, durability and recyclability in accordance with the highest international standards. We believe that our responsible approach may effectively reduce environmental impact of our products throughout the entire lifecycle of the various components. We do not use chemicals hazardous or dangerous to the environment, and the materials we use are tested and evaluated for potentially harmful effects on human health and the environment. Where possible, we reduce packaging materials to a minimum, which also optimises transport volume.

Cloud Chair



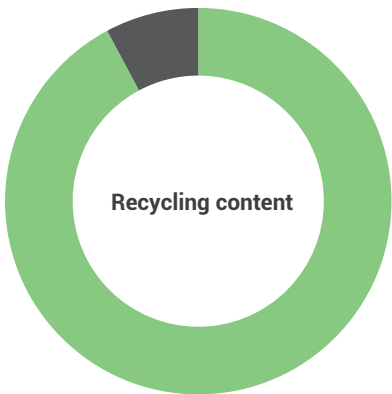
Materials		%
Aluminum		75
Plastic		13
Metal		4
Miscellaneous		8
Total		14.1 kg

The materials we select meet high quality standards, guaranteeing durable and eco-friendly products.

At ICF, we use:

- Ecological and/or post-consumer recycled materials;
- Products free from formaldehyde and toxic substances;
- Finishes free from hexavalent chromium.

Each component of the seat can be disassembled for repair, reuse and recycling.



		%
Recycling		92
Not recycling		8

Cloud Chair is a chair weighing approximately 14.1 kg and approximately 92% recyclable when completely and correctly separated.

Cloud Chair is conceived in accordance with the guidelines of eco-design, a technical methodology applied during design of a product in order to reduce that product's carbon footprint and environmental impact.

Note:

Material and Recycling content percentages may vary depending on the specific model evaluated and consequently of the structural materials and finishes of the considered model.

The above sustainability contents refer to model SAM.117.

Certifications

- EN 1335-1-2-3:2014
- UNI 9084:2002
- Ansi Bifma X5.1:2002
- Fire retardant Class 1 IM (Mesh N upholsteries)



ICF S.p.A.
Via Cassanese, 108
20052 Vignate (MI) Italy
+39 02 9508031 Tel.
+39 02 95364012 Fax
icf@icf-office.it

ICF Milano
P.tta U. Giordano, 2
20122 Milano, Italy
+39 02 76000583 Tel.
+39 02 7601395 Fax
icf@icf-office.it

www.icf-office.it