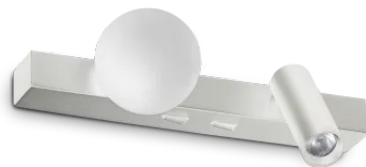


General info

Indoor - Wall lamps



Ean	8021696336534
Item	PING PONG AP BIANCO
Installation	Wall lamps
Warranty	5 years
Gross weight	0.79 kg
Volume	0.002456 m³

Technical info

Net weight	0.68 kg
Insulation class	II
Protection index	IP20
Compliance	CE
Operating temperature	0° ~ +40 °C
Dimmer	Non-dimmable, On-Off
Power output	100-240 V AC 50/60 Hz
Power supply	In-built, included NO, electronic



Source info

Integrated source	Integrated LED module
Replaceable source	Replaceable (by qualified operators only)
Power	0 6 W
Emission	Diffuse + Direct
Max consupcion	max 6 W
Features LED	LED SMD BRIDGELUX
CCT LED	3000 K
Duration LED (t. 25°C)	50000 h
CRI	> 90
SDCM	3
Light beam	120+30°
Light beam flux	600 lm
Useful light flux	360 lm
Photobiological risk	2