

INNOVATION LIVING™ | BLACK LABEL



# **Space saving designs for your home**

Since 1989 we have dedicated ourselves to the design and development of multifunctional sofa beds, and today we are proud to be able to call Innovation Living™ an internationally renowned sofa bed specialist.

Based on the Danish tradition of furniture design, we strive to design and develop durable sofa beds characterized by optimal balance between function and aesthetics.

The Black Label Collection is our premium range which offers exclusive designs in carefully selected, quality fabrics.

Per Weiss,  
Chief Design Officer





# ILB 100

Design by Andreas Lund, Flemming Højfeldt & Per Weiss



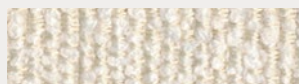


# ILB 100

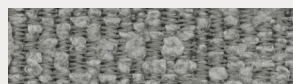
Design by Andreas Lund, Flemming Højfeldt & Per Weiss



**Bed size:** 115 x 200 cm | **Comfort:** Metal frame with Excess Pocket Spring comfort, see page 43 | **Fabrics:** Pages 4-5: 531 Bouclé Off White, pages 6-7: 533 Bouclé Ash Grey | **4-6 weeks delivery time:** Only available in 531 Bouclé Off White and 533 Bouclé Ash Grey | **Scan the QR code** to visit our visualizer and experience ILB 100.

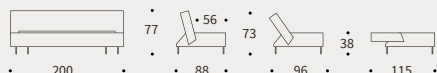


**531** Bouclé, Off White



**533** Bouclé, Ash Grey

**Bouclé:** 100 % Polyester | 430 g/m2 | 27.000 Martindale | Colour fastness to light: 5 out of 5 | Colour fastness to rubbing 4 -5 out of 5 | Dry clean only.









# ILB 201

Design by Emil Højfeldt & Per Weiss







# ILB 201 & 202

Design by Emil Højfeldt & Per Weiss



Use the sofa and chair as separate units



# ILB 201 & 202

Design by Emil Højfeldt & Per Weiss



Combine sofa and chair for lounging



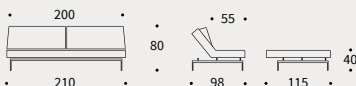


# ILB 200

Design by Emil Højfeldt & Per Weiss



**Bed size:** 115 x 210 cm | **Comfort:** Metal frame with Pocket Spring comfort, see page 42 | **Legs:** Matt black steel  
**Fabric:** 893 Mozart Masala | **4-6 weeks delivery time:** All fabrics, see page 47 | **Scan the QR code** to visit our visualizer and experience ILB 200 in other fabrics.







# ILB 201

Design by Emil Højfeldt & Per Weiss



**Bed size:** 115 x 210 cm | **Comfort:** Metal frame with Pocket Spring comfort, see page 42 | **Legs:** Matt black steel  
**Fabrics:** Pages 8-13: 321 Corocco Warm Grey, this page: 851 Mahoga Dark Blue | **4-6 weeks delivery time:** All fabrics, see page 47 | **Scan the QR code** to visit our visualizer and experience ILB 201 in other fabrics.





# ILB 202

Design by Emil Højfeldt & Per Weiss



**Chair size:** 115 x 90 cm | **Comfort:** Metal frame with Pocket Spring comfort, see page 42 | **Legs:** Matt black steel  
**Fabrics:** Pages 8-13: 321 Corocco Warm Grey, page 18: 851 Mahoga Dark Blue, this page: 853 Mahoga Dove Grey | **4-6 weeks delivery time:** All fabrics, see page 47 | **Scan the QR code** to visit our visualizer and experience ILB 202 in other fabrics.







# ILB 300

Design by Per Weiss







# ILB 300

Design by Per Weiss



**Bed size:** 140 x 200 cm | **Comfort:** Metal frame with Pocket Spring comfort, see page 42 | **Legs:** Trumpet legs in lacquered oak | **Detachable cover** | **Optional:** Headrest | **Fabrics:** Pages 20-21: 861 Yogia Ginger, pages 22-23: 894 Mozart Grey Bronze | **4-6 weeks delivery time:** All fabrics, see page 47 | **Scan the QR code** to visit our visualizer and experience ILB 300 in other fabrics.



Optional headrest







# ILB 400

Design by Emil Højfeldt & Per Weiss



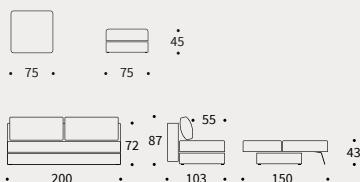


# ILB 400 & 402

Design by Emil Højfeldt & Per Weiss



**Bed size:** 150 x 200 cm | **ILB 402 ottoman size:** 75 x 75 cm | **Comfort:** Metal frame with Pocket Spring Dual comfort, see page 42 | **Legs:** Auto-fold | **Storage** in sofa bed and ottoman | **Optional:** Headrest | **Fabrics:** Pages 24-25: 320 Corocco Shadow Grey, pages 26-27: 860 Yogja Olive Brown | **4-6 weeks delivery time:** All fabrics, see page 47  
**Scan the QR code** to visit our visualizer and experience ILB 400 & 402 in other fabrics.



Optional headrest









# ILB 401

Design by Emil Højfeldt & Per Weiss





# ILB 401 & 402

Design by Emil Højfeldt & Per Weiss





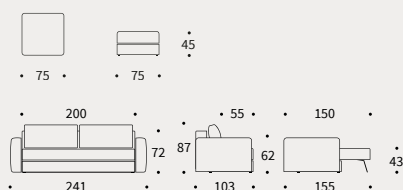


# ILB 401

Design by Emil Højfeldt & Per Weiss



**Bed size:** 150 x 200 cm | **ILB 402 ottoman size:** 75 x 75 cm | **Comfort:** Metal frame with Pocket Spring Dual comfort, see page 42 | **Legs:** Auto-fold | **Storage** in sofa bed and ottoman | **Optional:** Headrest | **Fabrics:** Pages 28-31: 861 Yogja Ginger, pages 32-33: 852 Mahoga Seal Grey | **4-6 weeks delivery time:** All fabrics, see page 47  
**Scan the QR code** to visit our visualizer and experience ILB 401 & 402 in other fabrics.









# ILB 500

Design by Per Weiss, Oliver & Lukas WeissKrogh



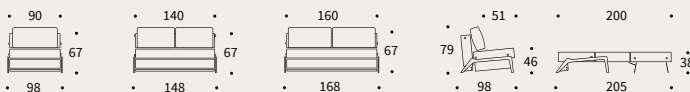


# ILB 500

Design by Per Weiss, Oliver & Lukas WeissKrogh



**Bed sizes:** 90 x 200 cm, 140 x 200 cm & 160 x 200 cm | **Comfort:** No-zag Spring and high resilient foam comfort, see page 43 | **Legs:** Smoked oak or lacquered oak | **Optional:** Headrest | **Shown combinations:** Pages 34-35: 140 x 200 cm with smoked oak and 862 Yogia Ocean Blue, pages 36-37: 140 x 200 cm with lacquered oak and 850 Mahoga Caramel Grey | **4-6 weeks delivery time:** All fabrics, see page 47 | **Scan the QR code** to visit our visualizer and experience ILB 500 in other fabrics.



Optional headrest







# ILB 501

Design by Per Weiss







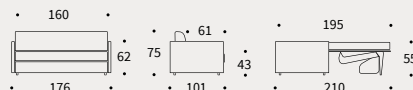
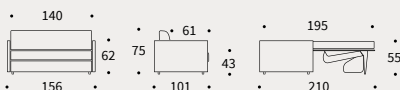


# ILB 501

Design by Per Weiss



**Bed sizes:** 140 x 195 cm & 160 x 195 cm | **Comfort:** Metal frame with 5-zone Multi-Pocket Spring or Dual Memory mattress, see page 43 | **Shown combinations:** Pages 38-39: 160 x 195 cm shown in 320 Corocco Shadow Grey, pages 40-41: 160 x 195 cm shown in 321 Corocco Warm Grey | **4-6 weeks delivery time:** All fabrics, see page 47  
**Scan the QR code** to visit our visualizer and experience ILB 501 in other fabrics.



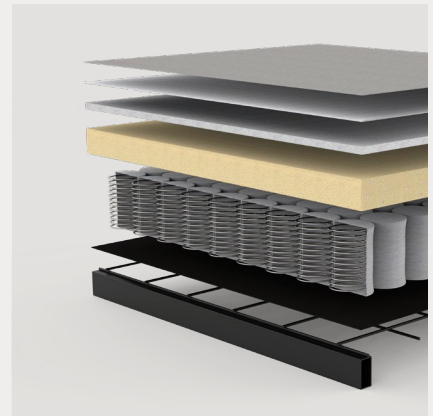
# The good comfort

## – Always at the center of our design process

### **Pocket Spring**

The individual pockets ensure that pressure is applied to each individual spring for better support – in seating as well as sleeping position. The high resilient foam and fiberfill contributes to a breathable mattress with a soft top support. The metal frame provides a rigid and very durable base for the mattress.

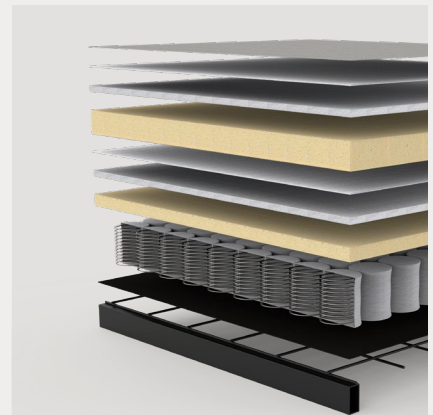
The following models have this comfort: ILB 200, ILB 201, ILB 202 and ILB 300.



### **Pocket Spring Dual**

The Pocket Spring Dual comfort shares the general composition of the Pocket Spring models apart from the extra layer of hyper soft foam that gives these sofa beds an extra soft feel. This extra layer of luxury provides a soft seating comfort as well as a mattress recommended for everyday sleeping. The metal frame contributes with a rigid and very durable base for the mattress.

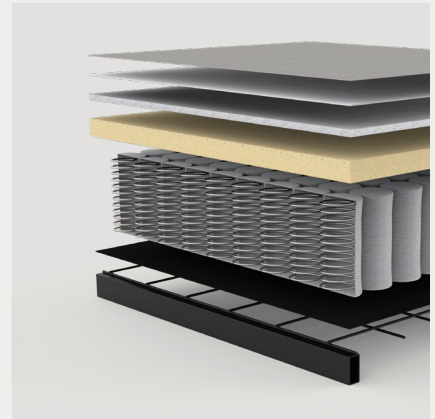
The following models have this comfort: ILB 400, ILB 401 and ILB 402



## Excess Pocket Spring

The higher coils in the Excess Pocket Spring models provide a deeper and softer sitting comfort. In combination with the core foam and fiberfill casing, the Excess mattress has higher absorption of pressure on each spring for a more comfortable sleep. The metal frame provides a rigid and very durable base for the mattress.

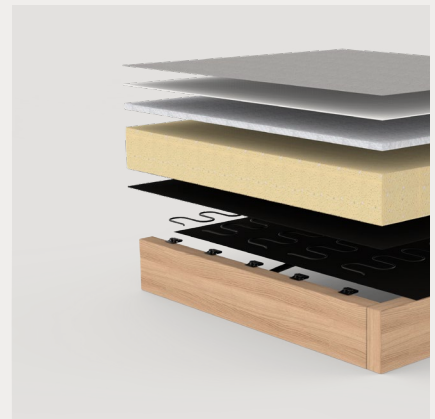
The following model have this comfort: ILB 100



## No-zag Spring

The No-zag Spring provides a medium soft comfort ideal for sofa seats and backrests. The thick layer of high resilient foam enhances the comfort of the spring to ensure a great sleeping experience as well.

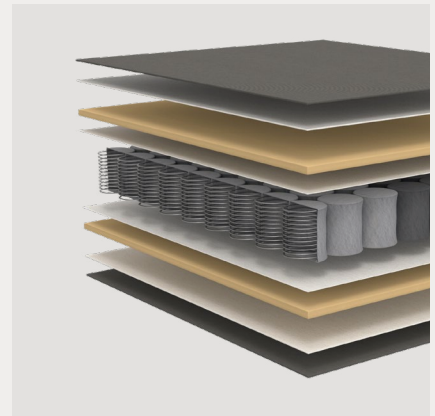
The following model have this comfort: ILB 500



## 5-zone Multi-Pocket Spring

A breathable Multi-Pocket Spring mattress - designed for everyday sleep. With as many as 650 springs per square meter and 5 comfort zones to support the individual parts of your body, the basis for a good night's sleep does not get much better. The cover is removable and can be washed at 60 degrees. The use of high-quality Italian made mechanisms ensure a long lasting functionality as well.

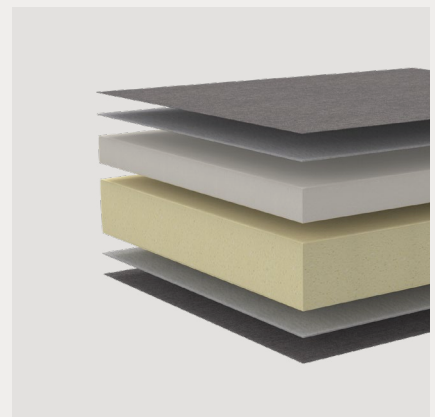
Available for: ILB 501



## Dual Memory

The Dual Memory mattress features two comforts in one as the mattress is reversible with one side consisting of an 8 cm high density foam whilst the other side consists of 4 cm OEKO-TEX certified memory foam. Whether you prefer soft or firm comfort, this mattress offers both. The cover is removable and can be washed at 60 degrees. The use of high-quality Italian made mechanisms ensure a long lasting functionality as well.

Available for: ILB 501







## Top Mattresses

A 5 cm durable and reversible top mattress that provides an even and extra supportive sleeping surface. The cover is breathable, removeable and machine-washable at 60 degrees Celsius. Available in 120 / 140 / 150 and 160 x 200 cm. Practical bag for storage included.



## Mattress Pads

The OEKO-TEX certified mattress pad provides a little extra cushioning and an added layer of protection for your mattress. The mattress pads are machine-washable at 60 degrees Celsius. Available in 80 / 90 / 120 / 140 / 150 and 160 x 200 cm.

# Accessories



## Circle cushions

Sizes: Ø 40 cm & Ø 45 cm | Button on both sides  
Polyester fill inside.

## Dapper cushions

Sizes: 50 x 50 cm & 40 x 60 cm  
Detachable & washable cover | Feather mix inside.

## Headrest

Size: 50 x 50 x 11 cm | Adjustable headrest available for  
ILB 300, ILB 400, ILB 401 and ILB 500 | Detachable cover  
Foam core surrounded by a layer of fiberfill.



# Fabrics

The Black Label fabric collection is a small, carefully selected assortment of stocked quality fabrics to match exclusively for the product designs in this range. This enables fast and trouble free production and delivery.

The Black Label range is also available in other Innovation Living fabrics which can be found on our website.

Finally, we also offer production in other fabrics of your choice (COM) but reserve the right to approve the textile before production. Please see our website or price list for further information.

# Visualize

Visualize any of the Innovation Living fabrics on a sofa bed by scanning the QR code shown in the bottom corner of each product page in this catalogue. This will take you to our website where you will find further information about the products and fabrics.

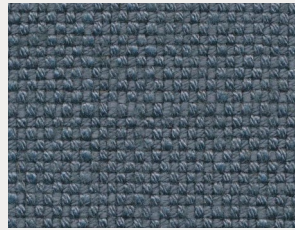




**860** Yogia, Olive Brown

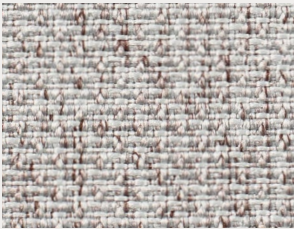


**861** Yogia, Ginger

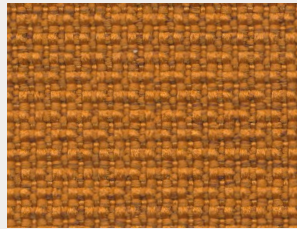


**862** Yogia, Ocean Blue

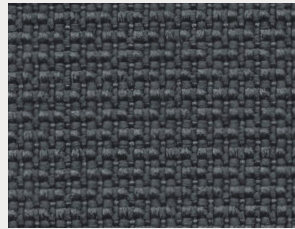
**Yogia is a German quality fabric with a classic casual linen look.** Facts: 70 % Viscose & 30 % Linen | 590 g/m2  
30.000 Martindale | Colour fastness to light: 4-5 out of 5 | Colour fastness to rubbing 4 out of 5 | Dry clean only.



**888** Mozart, Slate Brown



**893** Mozart, Masala



**894** Mozart, Grey Bronze

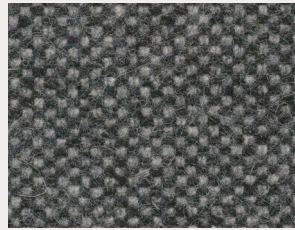
**Mozart is a durable quality fabric with a modern nordic character from Danish Gabriel.** Facts: 100 % Polyester  
450 g/m2 | 100.000 Martindale | Colour fastness to light: 4-5 out of 5 | Colour fastness to rubbing 4-5 out of 5  
OEKO-TEX certified | Dry clean only.



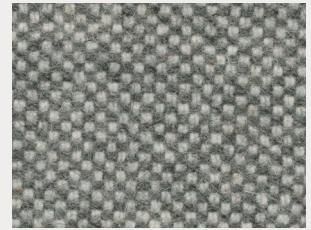
**850** Mahoga, Caramel Grey



**851** Mahoga, Dark Blue

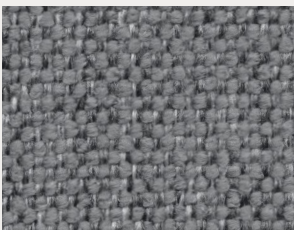


**852** Mahoga, Seal Grey



**853** Mahoga, Dove Grey

**Mahoga is a sophisticated Italian fabric made from recycled wool.** Facts: 70% recycled wool / 20 % PL / 5 % PA / 5 % PC | 375 g/m2  
55.000 Martindale | Colour fastness to light: 5 out of 5 | Colour fastness to rubbing 4-5 out of 5 | Dry clean only.



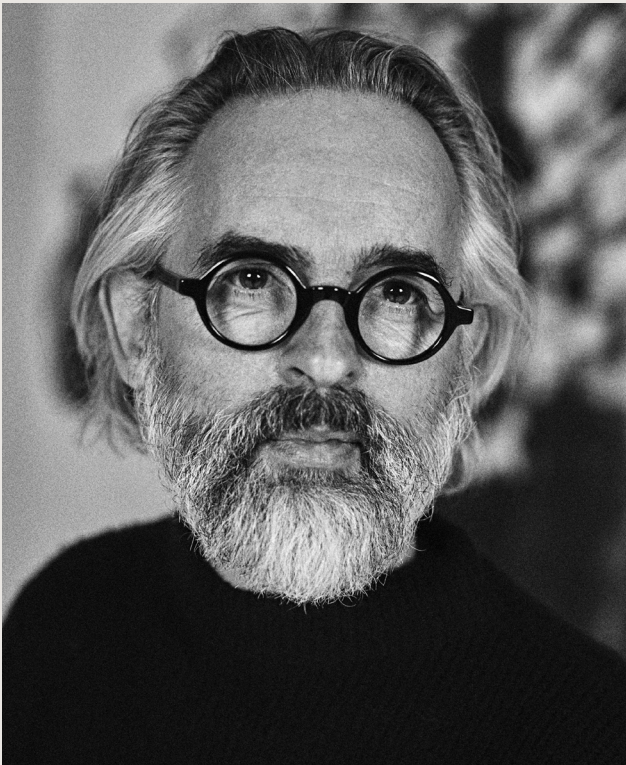
**320** Corocco, Shadow Grey



**321** Corocco, Warm Grey

**Corrocco is a German quality fabric with a classic character.** Facts: 100 % Polyester | 519 g/m2 | 30.000 Martindale | Colour fastness to light: 4-5 out of 5 | Colour fastness to rubbing 4-5 out of 5 | Dry clean only.

Please note that the printed presentation of the fabric texture and colours may vary from the actual fabric.



**Per Weiss**  
Chief Design Officer  
Innovation Living Design Office

## Designers

The Danish designer Per Weiss is the Chief Design Officer of Innovation Living. He has been part of Innovation Living since 1989 and is the driving force behind the constant creative development of the collections.

Based on the Scandinavian design tradition he is constantly striving to create attractive and durable designs that will make a positive difference in an everyday life.



**Emil Højfeldt**  
Product- & Production  
Development Manager



**Oliver & Lukas WeissKrogh**  
Studio WeissKrogh



**Flemming Højfeldt**  
Founder of Innovation Living™



**Andreas Lund**  
Industrial Designer

## **Durability means sustainability**

Quality and durability are the center of our design and production process. We conduct systematic testing and have no concerns offering 5 years warranty. See further information about the warranty on our website.

## **Maintain & refresh**

Designing for flat packing means we create parts that easily combines into a full product. By doing so we obtain the possibility of maintenance and renewal of parts.

## **Disassembly & recycling**

In our design process we focus on the ability to disassemble the products for recycling. Each design creates a new challenge in terms of choice of materials and how they are combined. Some designs are more suited for disassembly and recycling than others, but the ECO-dimension is always an integral part of our way of thinking.

## **Give back to nature**

To contribute to the balance of the global ecosystem Innovation Living plants 10.000 new trees every year to compensate for our consumption of wood.



## **Worldwide service**

As a leading, global specialist with distribution in more than 80 countries and local productions, warehouses and offices in Denmark, Ukraine, China and the United States, we can offer a worldwide service.

## **Certified productions**

As a Danish Company with production and Head Office in Denmark, CSR is high on our agenda. To ensure good working environments and transparency in our supply chain, our production facilities and suppliers in Ukraine and China are continuously audited against the amfori BSCI Code of Conduct.

## **People & environmental care**

The founding value of the company is respect. Respect towards colleagues, customers and the environment. We believe that happy employees in combination with good and long partnerships with suppliers and customers are the keys to success.



EXPAND YOUR LIVING SPACE



[WWW.INNOVATIONLIVING.COM](http://WWW.INNOVATIONLIVING.COM)