

CREATE

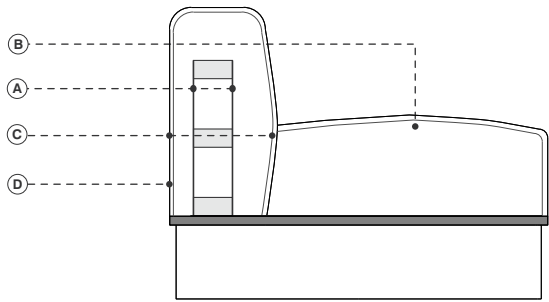
Armchair, Sofa, System

Prêt-à-Porter

laCividina Lab,
2025

laCividina





- | | | | |
|---|--|---|---|
| ■ Legno massiccio di abete | ■ Solid fir | ■ Bois de sapin massif | ■ Massivholz aus Tanne |
| ■ Multistrato di faggio | ■ Multilayered beech | ■ Multiplis de hêtre | ■ Buchenschichtholz |
| A. Pannello di masonite | A. Masonite panels | A. Panneau de particules | A. Holzfaserplatte |
| B. Poliuretano espanso ignifugo indeformabile a quote differenziate | B. Flame-retardant undeformable polyurethane foam of different densities | B. Mousse polyuréthane expansé ignifuge indéformable à épaisseurs différenciées | B. Feuerfester formbeständige Polyurethanschaum in unterschiedlicher Dichte |
| C. Fibra di poliestere | C. Polyester fibers | C. Fibre de polyester | C. Polyester |
| D. Rivestimento sfoderabile in tessuto e non sfoderabile in pelle o finta pelle | D. Removable upholstery in fabric and non removable in leather or artificial leather | D. Revêtement déhoussable en tissu; pas déhoussable en simili cuir et cuir | D. Stoffbezug abziehbar; Leder- und Kunstlederbezug unabziehbar |

NOTE
NOTES
ANNOTATION
ANMERKUNG

- | | | | |
|---|---|--|---|
| • Prodotto disponibile su misura con preventivo su richiesta | • This item can be tailor made with price on request | • Collection personnalisable sur demande | • Produkt nach Maß verfügbar auf Anfrage |
| • Cuscini extra disponibili | • Extra cushions available | • Autres coussins disponibles | • Weitere Kissen verfügbar |
| • COM: tessuto cliente (tinta unita e h.140 cm.) - campione richiesto | • COM: client's fabric (plain colour and width 140 cm.) - sample required | • COM: tissu fourni (couleur unie et hauteur 140 cm.) - échantillon nécessaire | • COM: Kundenstoff (einfarbig und Breite 140 cm.) - Stoffmuster nötig |
| • COL: pelle cliente - campione richiesto | • COL: client's leather - sample required | • COL: cuir fourni - échantillon nécessaire | • COL: Kundenleder - Ledermuster nötig |

FINITURA BASE
BASE FINISH
FINITION DE PIÈTEMENT
GESTELL AUSFÜHRUNG



Frassino naturale
Natural ash
Frêne naturel
Eschenholz Naturfarbe



Frassino tinto grafite
Graphite-stained ash
Frêne teinté graphite
Eschenholz Graphit gebeizt

SISTEMA DI AGGANCIO
SYSTEM CONNECTOR
SYSTEME D'ASSEMBLAGE
VERBINDUNGSHAKEN



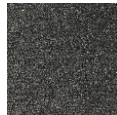
Sistema di aggancio tra sedili
Seating connector
Système d'assemblage de socle
Verbindungssystem zwischen Sitz-
Elementen

QUICK SHIP

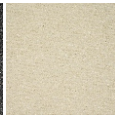
Spedizione rapida con questi rivestimenti / Fast shipping with these fabrics / Livraison rapide avec ces tissus / Schneller Versand mit diesen Stoffen

CAT. START

RINGO
col. 6 - lava



OPUS
col. 901 - gesso



CAT. A

HANGO
col. 8 - ocra



AUTUMN
col. 0751



CAT. B

GEIKO
col. 04 - oliva



CAT. C

KEN BI
col. 017 - tortora



RIVESTIMENTI CONSIGLIATI
RECOMMENDED COVERINGS
REVÊTEMENTS CONSEILLÉS
EMPFOHLENE BEZÜGE

CAT. START
RINGO
OPUS

CAT. A
XTREME
TAILOR
ANGEL
MEDLEY
SAMAR
AVON
MAGNUM
AUTUMN
HANGO

CAT. B
FAME
MAIN LINE FLAX
HERO
HESTAN
SILVERTEX
GEIKO

CAT. C
SUPERB
TREND
KEN BI

CAT. SUPER
ORSETTO
REMIX 3
MYLLA

CAT. EXTRA
STEELCUT TRIO 3
ARIANA
OPERA
ARCO
CREDO
TRIO
BIT

CAT. MAXI
MOAIC 2
UNIFORM MÉLANGE
HALLINGDAL 65
DIVINA 3

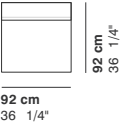
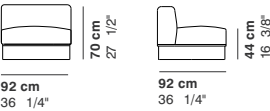
CAT. TOP
ARDA

CAT. SPECIAL
GENTLE 2

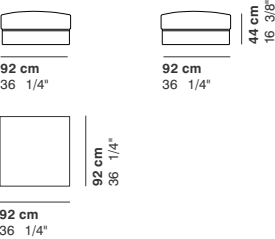
CAT. LUX
LUX 1
LUX 2

CAT. IMPERIAL
IMPERIAL 1
IMPERIAL 2

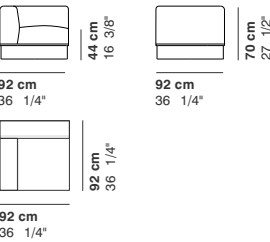
COD. 1750
ELEMENT 92x92



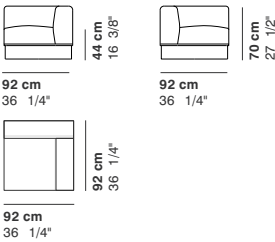
COD. 1751
OTTOMAN



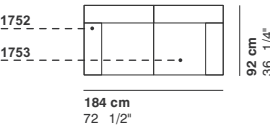
COD. 1752
ELEMENT LEFT



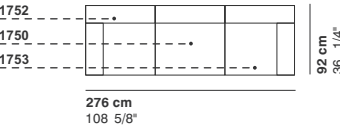
COD. 1753
ELEMENT RIGHT



COD. CRE01
SOFA 2 SEATER

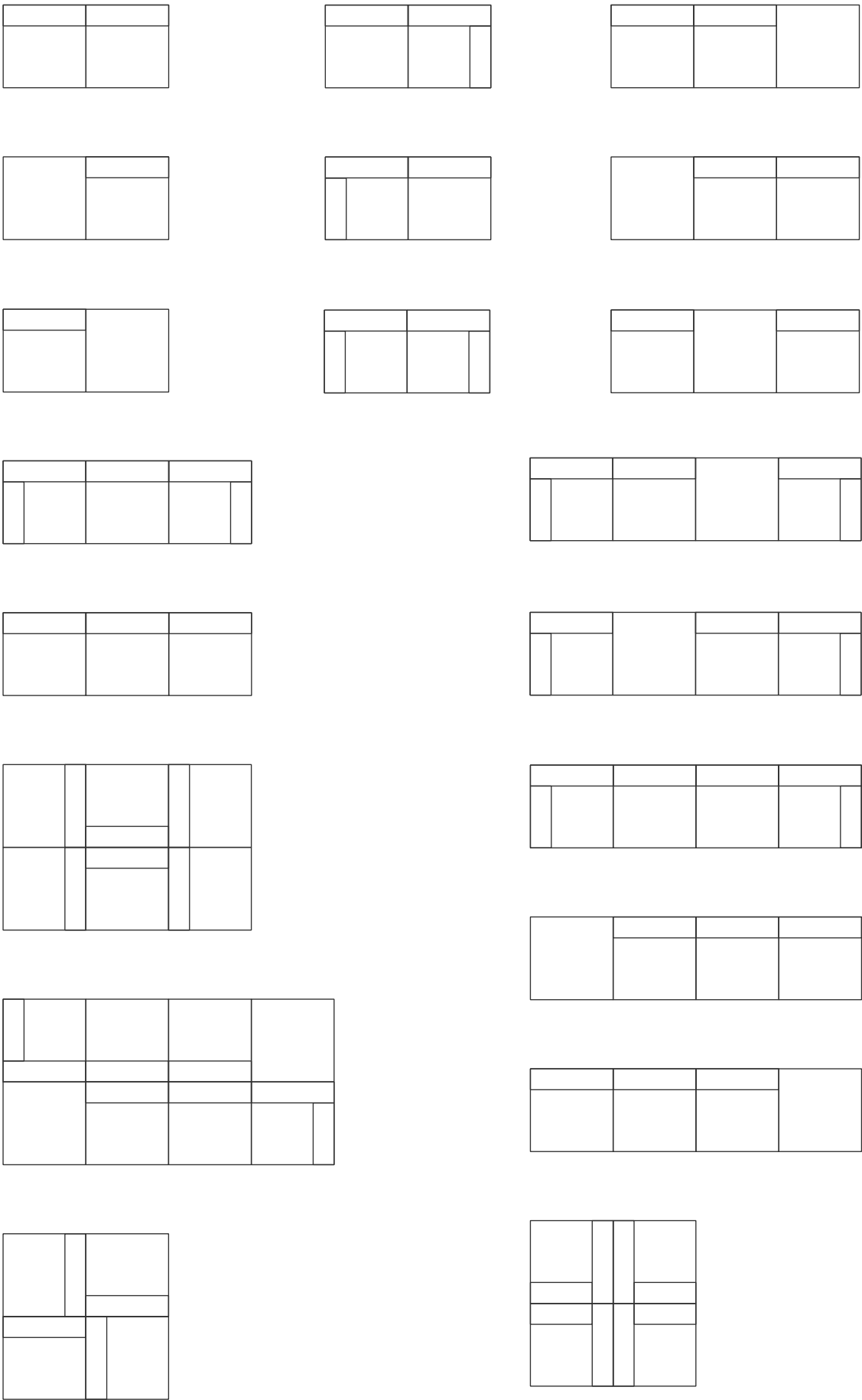


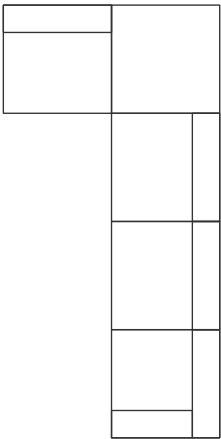
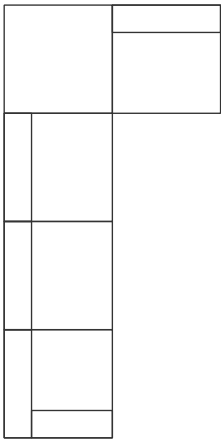
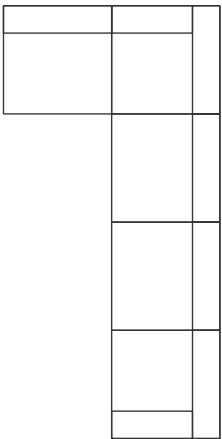
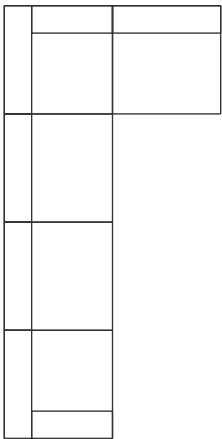
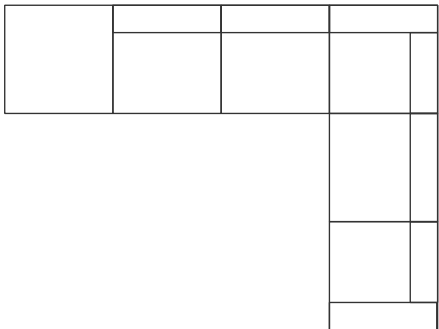
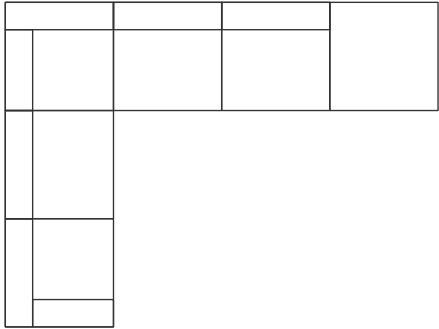
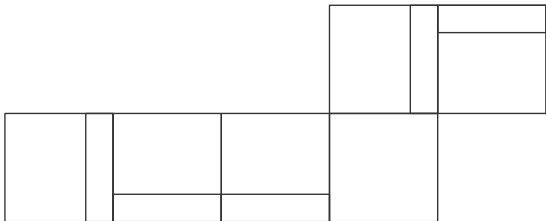
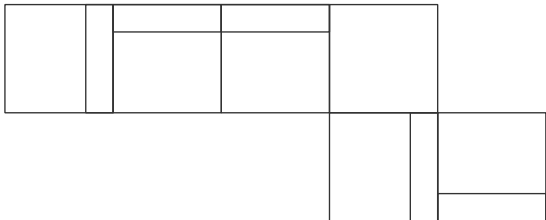
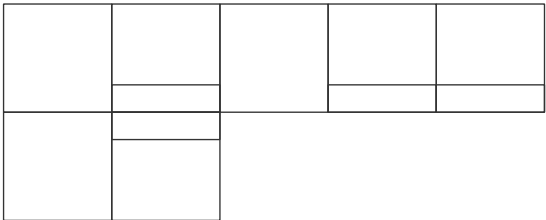
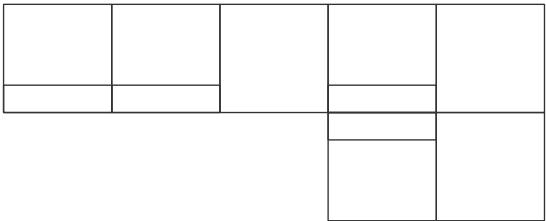
COD. CRE02
SOFA 3 SEATER



COD. CRE03
SOFA 4 SEATER







La Cividina s.r.l., al fine di migliorare le caratteristiche tecniche e qualitative della sua produzione, si riserva di apportare, anche senza preavviso, tutte le modifiche che si rendessero necessarie.

With a view to improving the technical characteristics and quality of its products la Cividina s.r.l. reserves the right to develop its products at anytime without notice.

A fin d'améliorer les caractéristiques de sa production, La Cividina s.r.l. se réserve d'apporter, même sans préavis, toutes les modifications qui se rendent nécessaires.

Zur Verbesserung, der technischen und qualitativen Merkmale, behält sich La Cividina s.r.l. vor, alle notwending erscheinenden Produktionsänderungen, auch ohne Vorankündigung durchzuführen.

LA CIVIDINA S.R.L.

HEADQUARTERS / PRODUCTION

Via Spilimbergo 162
33035 Martignacco
Udine Italy
T +39 0432 677433
F +39 0432 677480
info@lacividina.com
lacividina.com

ISO 9001



SHOWROOM MARTIGNACCO

Via Lungolavia 1
33035 Martignacco
Udine Italy
T +39 0432 677433

SHOWROOM MILANO

Palazzo Borromeo d'Adda
Via Manzoni 41
20121 Milano
Italy
T +39 345 8350810