

SEELA AC | S346

Antti Kotilainen | 2022



SEELA AC

Antti Kotilainen | 2022

The SEELA seating family by Antti Kotilainen grows and adds two new proposals in 2025, both suitable for indoor use and the contract and residential markets: a SOFT variant with an upholstered cushion applied to the inner shell and a version with an inner shell covering in black leather. The new proposals join the existing ones, characterized by very light bases on which rests a sinuous polypropylene shell, which in turn continues into the seat without interruptions, accommodating a rounded insert in wood, polypropylene or fabric. Also available in the fully upholstered variant, even more comfortable and elegant, it allows you to play with colors, having fun combining a shell in one color and the seat interior in another.



SEELA AC

Antti Kotilainen | 2022

| S346 armchair with adjustable, low 5-spoke base

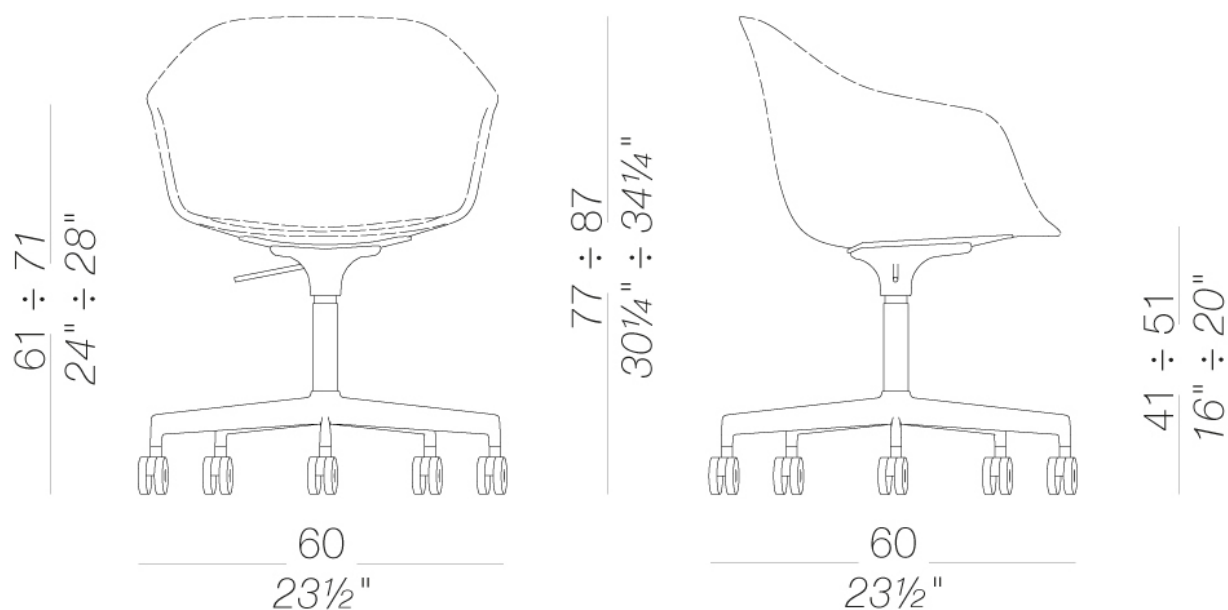
Shell in polypropylene with integrated seamless seatpad in polypropylene, wood or fabric, easily removable with 4 screws and replaceable. A fully upholstered shell without removable seat-pad is also available.

Outer shell in polypropylene. Inner shell in polypropylene, upholstered with fabric.

Five-star swivel height adjustable base in sandblasted aluminium or powder coated, with self-braking castors.

Also available with a polypropylene shell, offered in various colors, with a soft padded cushion applied to the seat.

Also available with a fully leather-covered shell, with a non-removable cushion applied to the seat.



SEELA AC | S346

Antti Kotilainen | 2022

upholstery



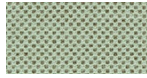
fabric
Main Line Flax -
Grade. B
57 Colors



fabric
Blazer - Grade. C
77 Colors



fabric
Chili - Grade. A
47 Colors



fabric
Umber - Grade. B
36 Colors



fabric
Nobel - Grade. C
30 Colors



fabric
Naveli - Grade. C
24 Colors



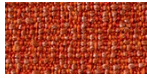
fabric
Fiocco - Grade. B
34 Colors



fabric
Atrium - Grade. C
16 Colors



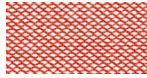
fabric
Panama - Grade. A
48 Colors



fabric
Sorrento - Grade. B
22 Colors



fabric
Canvas 2 - Grade C
45 Colors



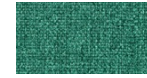
fabric
Steelcut Trio 3 -
Grade D
54 Colors



fabric
Remix 3 - Grade C
72 Colors



fabric
Tonica 2 - Grade C
39 Colors



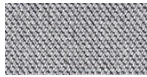
fabric
Medley - Grade A
37 Colors



fabric
Maya - Grade A
43 Colors



fabric
Jet - Grade A
66 Colors



fabric
Capture - Grade B
60 Colors



fabric
Crisp - Grade B
40 Colors



fabric
Iris - Grade B
34 Colors



ecoleather
Valencia - Grade B
72 Colors



fabric
Grain - Grade. B
50 Colors



fabric
Re-wool - Grade C
24 Colors



leather
leather
7 Colors

frame



powder coating
black
1 Colors



powder coating
white
1 Colors

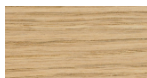


metal
aluminium
1 Colors

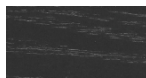
seat-pad



plastics
polypropylene
10 Colors



wood
blached oak
1 Colors



wood
black open pore
1 Colors



leather
leather
7 Colors

shell



plastics
polypropylene
9 Colors



leather
leather
7 Colors

SEELA AC | S346

Antti Kotilainen | 2022

consult the portfolio for the range of colors, fabrics, eco-leather, soft-leather.

use and maintenance instructions

Clean all parts in wood, leather, fabric and metal with a damp cloth or a diluted neutral cleaner. Do not use cleaners with alcohol, bleach, solvent or abrasive products. Any liquid spilt on the product must be wiped up immediately. When lifting or moving the product, hold it on the structure and not under the seat. The product should not be subjected to unbalanced weights, as it is designed for a proper rest on the foothold (on four legs or on the base). Our company relieves from any responsibility in case of damage caused to fragile floors. Avoid any improper use of the product: do not step on the product, on the footrest or on the armrests. Avoid any movements that could compromise the proper functionality of the product or the safety of the users. Wood and leather, being natural materials, could be easily damaged. Small impurities or imperfections are within quality standard range. Do not expose the product to weather conditions or atmospheric agents, nor to heat sources over 40°C. Also products for outdoor use could be afflicted by atmospheric agents. The product could undergo possible exterior changes due to particular exposure to heat, humidity and saltiness. An appropriate and frequent maintenance and cleaning of the product enhances its durability. The product could change colour and shade, if exposed to direct sunlight. Maintenance has to be carried out by experienced staff. Dispose of the package only after assembling the product, in order to avoid the loss of ironmongery and components. Once the product has been dismantled, the product itself or its components must be given to the public garbage disposal system, according to the legislation in force.