

# SEELA AC | S342

Antti Kotilainen | 2022



# SEELA AC

Antti Kotilainen | 2022

The SEELA seating family by Antti Kotilainen grows and adds two new proposals in 2025, both suitable for indoor use and the contract and residential markets: a SOFT variant with an upholstered cushion applied to the inner shell and a version with an inner shell covering in black leather. The new proposals join the existing ones, characterized by very light bases on which rests a sinuous polypropylene shell, which in turn continues into the seat without interruptions, accommodating a rounded insert in wood, polypropylene or fabric. Also available in the fully upholstered variant, even more comfortable and elegant, it allows you to play with colors, having fun combining a shell in one color and the seat interior in another.

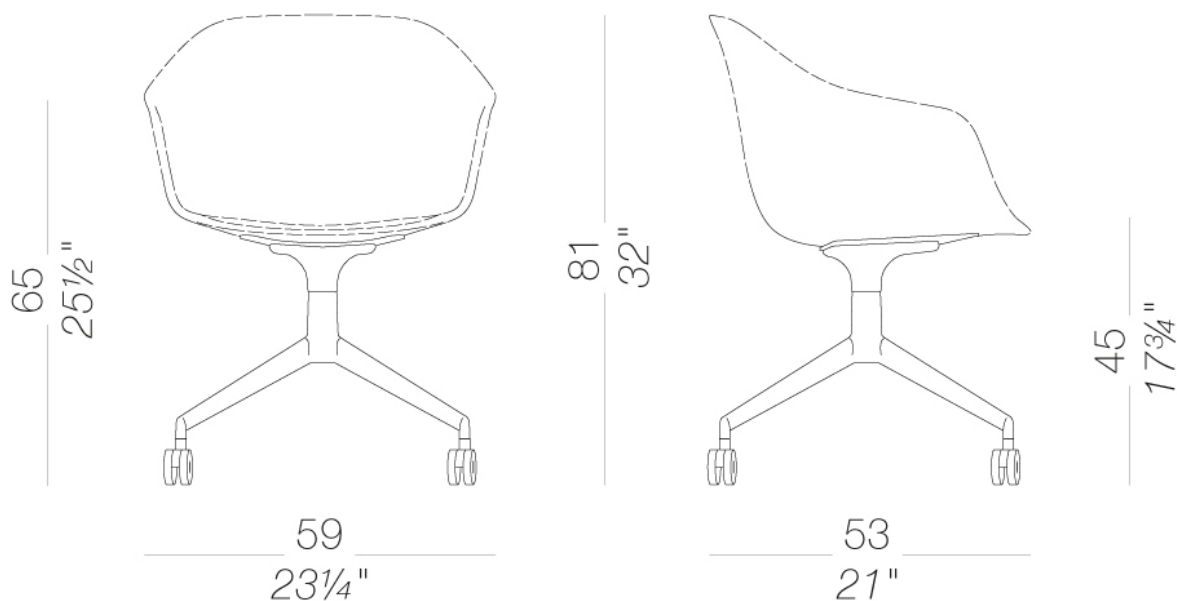


# SEELA AC

Antti Kotilainen | 2022

## | S342 Armchair 4-spoke base, on castors

Shell in polypropylene with integrated seamless seatpad in polypropylene, wood or fabric, easily removable with 4 screws and replaceable. A fully upholstered shell without removable seat-pad is also available. Trestle base in sandblasted aluminium or powder coated, with self-braking castors.



# SEELA AC | S342

Antti Kotilainen | 2022

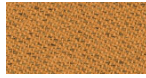
## upholstery



fabric  
Main Line Flax -  
Grade. B  
57 Colors



fabric  
Blazer - Grade. C  
77 Colors



fabric  
Chili - Grade. A  
47 Colors



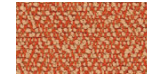
fabric  
Umber - Grade. B  
36 Colors



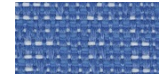
fabric  
Nobel - Grade. C  
30 Colors



fabric  
Naveli - Grade. C  
24 Colors



fabric  
Fiocco - Grade. B  
34 Colors



fabric  
Atrium - Grade. C  
16 Colors



fabric  
Panama - Grade. A  
48 Colors



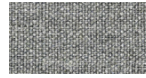
fabric  
Sorrento - Grade. B  
22 Colors



fabric  
Canvas 2 - Grade C  
45 Colors



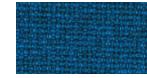
fabric  
Steelcut Trio 3 -  
Grade D  
54 Colors



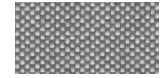
fabric  
Remix 3 - Grade C  
72 Colors



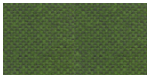
fabric  
Tonica 2 - Grade C  
39 Colors



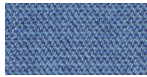
fabric  
Medley - Grade A  
37 Colors



fabric  
Maya - Grade A  
43 Colors



fabric  
Jet - Grade A  
66 Colors



fabric  
Capture - Grade B  
60 Colors



fabric  
Crisp - Grade B  
40 Colors



fabric  
Iris - Grade B  
34 Colors



ecoleather  
Valencia - Grade B  
72 Colors



fabric  
Grain - Grade. B  
50 Colors

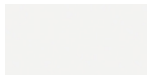


fabric  
Re-wool - Grade C  
24 Colors

## frame



powder coating  
black  
1 Colors



powder coating  
white  
1 Colors



metal  
aluminium  
1 Colors

## shell



plastics  
polypropylene  
10 Colors

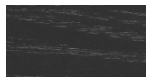
## seat-pad



plastics  
polypropylene  
10 Colors



wood  
blanch oak  
1 Colors



wood  
black open pore  
1 Colors

# SEELA AC | S342

Antti Kotilainen | 2022

**consult the portfolio for the range of colors, fabrics, eco-leather, soft-leather.**

## **use and maintenance instructions**

Clean all parts in wood, leather, fabric and metal with a damp cloth or a diluted neutral cleaner. Do not use cleaners with alcohol, bleach, solvent or abrasive products. Any liquid spilt on the product must be wiped up immediately. When lifting or moving the product, hold it on the structure and not under the seat. The product should not be subjected to unbalanced weights, as it is designed for a proper rest on the foothold (on four legs or on the base). Our company relieves from any responsibility in case of damage caused to fragile floors. Avoid any improper use of the product: do not step on the product, on the footrest or on the armrests. Avoid any movements that could compromise the proper functionality of the product or the safety of the users. Wood and leather, being natural materials, could be easily damaged. Small impurities or imperfections are within quality standard range. Do not expose the product to weather conditions or atmospheric agents, nor to heat sources over 40°C. Also products for outdoor use could be afflicted by atmospheric agents. The product could undergo possible exterior changes due to particular exposure to heat, humidity and saltiness. An appropriate and frequent maintenance and cleaning of the product enhances its durability. The product could change colour and shade, if exposed to direct sunlight. Maintenance has to be carried out by experienced staff. Dispose of the package only after assembling the product, in order to avoid the loss of ironmongery and components. Once the product has been dismantled, the product itself or its components must be given to the public garbage disposal system, according to the legislation in force.