

Stilt

sofa high backed

Technical Data

- Backrest - 18 mm thick particle board framework; cut foam, density of 25 kg/m³; upholstered;
- Armrests - 18 mm thick particle board framework; cut foam, density of 40 kg/m³; upholstered;
- Seat - steel framework with springs; cut foam, density of 35 kg/m³; upholstered;
- Base - 4-legged, powder coated steel; legs made of tube Ø 30 mm, wall thickness 2 mm;
- Extra charge option: mediabox M010 - USB A, C; 5V, 2x2,5 Amp;
- Extra charge option: worktop - MDF lacquered 19 mm - in frame colour; powder-coated steel;
- Castors - with brakes; Ø75 mm.

Selected configuration

SISH2

Frame: Dark grey semi-matt RAL
7042

Seat fabric: Medley - 100% polyester

Seat colour: M-64019 red

Footers: Grey

Weight: 72.1kg

Sustainability

- Sustainable production – we are not indifferent to the environmental impact of our furniture, therefore we provide the essential information on the life cycle of Stilt seating through the Environmental Product Declaration (EPD).
Environmental Product Declaration Type III ITB No. 353/2022 SEATINGS.
- Steel profiles are powder-coated to reduce the emission of Volatile Organic Compounds.
- MDF boards used in the production of Stilt furniture are acquired from FSC/PEFC-certified producers.
- Sustainable production – we are not indifferent to the environmental impact of our furniture, therefore we provide the essential information on the life cycle of our products through the Environmental Product Declarations (EPD).



Guarantee

.mdd products - 5 years.

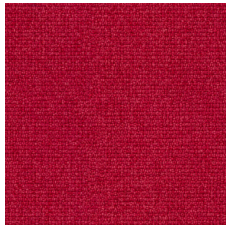
Electrical components and fabric - 2 years.

Certificates



Fabric technical data

Medley



Material	100% polyester
Weight	364g/m2 · 510g/lm
Abrasion resistance rubs	75,000 Martindale cycles
Pilling resistance	scale 1-5, max 5 · EN ISO 12945-2 4
Colour fastness to light	scale 1-8, max 8 · EN ISO 105 - B02 5-7
Colour fastness to rubbing	scale 1-5, max 5 · EN ISO 105x12 (wet/dry) 4-5/4-5
Acoustic test sound absorption	ISO 354
Flammability	BS EN 1021 - 1:2006 (cigarette), BS EN 1021 - 2:2006 California Bulletin CAL 117-E-Class 1