



Calla DP PP Armchair

design Fabrizio Batoni, 2019

Calla swivel and height-adjustable task armchair. Five-ways base in painted steel on wheels and polypropylene seat. Optional: fixed cushion for the seat. The armchair is also available in the version without armrests, in plastic or upholstered.



Colors and Materials

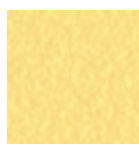
Structure



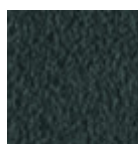
White Steel



Sand Steel



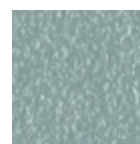
Pastel Yellow Steel



Grafite Steel



Black Steel



Light blue steel



Ocean Blue Steel



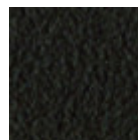
Bronze Steel



Fango Steel



Light Grey Steel



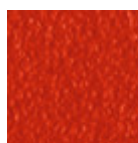
Brown Steel



Ocher Steel



Facepowder Pink Steel

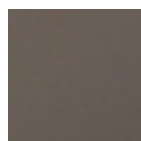


Red steel



Sage Green Steel

Coating



Polypropylene

9 Colors

Extensions



Bubble Fabric
14 Colors



Carabù Fabric
15 Colors



Cotton Club Fabric
13 Colors



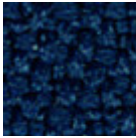
Fenix Wool Fabric
13 Colors



Hot Fabric
14 Colors



Main Line Flax Fabric
16 Colors



Mirage Fabric
6 Colors



Scubidù Fabric
10 Colors



Second Fabric
11 Colors



Visual Fabric
11 Colors



Velvet Superb
15 Colors



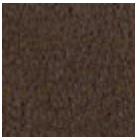
Secret Faux Leather
22 Colors



Vintage Faux Leather
12 Colors



Fiore Leather
18 Colors



Vintage Leather
4 Colors

Dimensions

Dimensions

Volumetric Details

Weight 10 Kg
Volume 0.29 mc
Package 2

Image not found or type unknown

	cm	inch
A	78/88	30,7/34,6
B	58	22,8
C	55	21,7
D	46/56	18,1/22
E	68/78	26,8/30,7