

**MIDJ**  
INITALY

# Marcopolo Extendable Table

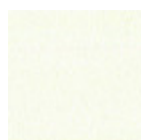
design Paolo Vernier

Extendable table with four legs base in lacquered steel. Top and extensions in glass or crystalceramic.

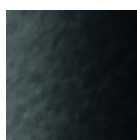


## Colors and Materials

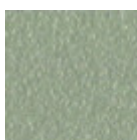
### Structure



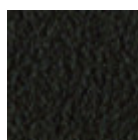
White Steel



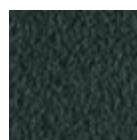
Black Steel



Sand Steel

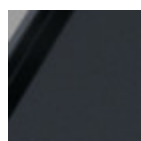


Brown Steel

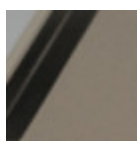


Grafite Steel

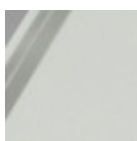
### Coating



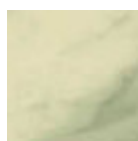
Matt Graphite  
Antiscratch Glass



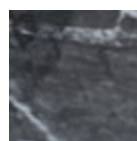
Matt Sand  
Antiscratch Glass



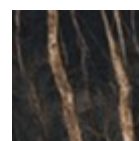
Extra Clear Matt  
White Antiscratch  
Glass



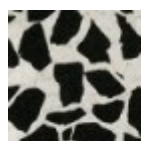
Crystalceramic with  
effect calacatta  
marble



Crystalceramic  
Glossy Black Greek  
Marble

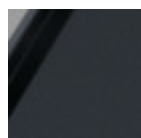


Crystalceramic with  
effect noir desir  
marble

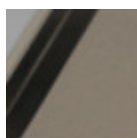


Venetian  
crystalceramic

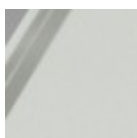
### Extensions



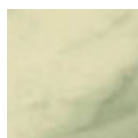
Matt Graphite  
Antiscratch Glass



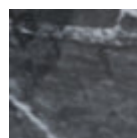
Matt Sand  
Antiscratch Glass



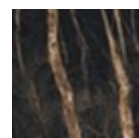
Extra Clear Matt  
White Antiscratch  
Glass



Crystalceramic with  
effect calacatta  
marble



Crystalceramic  
Glossy Black Greek  
Marble



Crystalceramic with  
effect noir desir  
marble



Venetian  
crystalceramic

## Dimensions

Dimensions

## Volumetric Details

**Weight** 116 Kg

**Volume** 1.35 mc

**Package** 3

Image not found or type unknown

	A	B	C	D
	(cm)	(cm)	(cm)	(cm)
	(inch)	(inch)	(inch)	(inch)
140/230x140	76	140	140	230
(cm)	29.9	55.1	55.1	90.6
(inch)				
160/250x100	76	160	100	250
(cm)	29.9	63	39.4	98.4
(inch)				