

**MIDJ**  
INITALY

# Japan floor

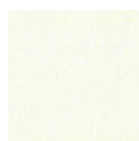
Contemporary finishes and linear shapes are the expression of a concept linked to the culture of the Rising Sun: cleaning up the superfluous by bringing to light the essential. The Japan lamp is made with base, structure and diffuser in white or black painted metal, the diffuser has a glossy metal insert with black nickel finish.

On the electric power cable there is the on / off foot switch. The cable has a length of 2 m (78,74 in) and is covered in black silk.

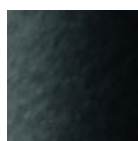


## Colors and Materials

### Structure



White steel



Black steel

## Dimensions

Dimensions  
mean not found or type unknown

	cm	inch
<b>A</b>	170	66.9
<b>B</b>	25	9.8
<b>C</b>	35	13.8

## Volumetric Details

**Weight** 18 Kg

**Volume** 0.26 mc

**Package** 1