



Calla P M_Q PP Armchair

design Fabrizio Batoni, 2019

Plastic armchair with armrests. Polypropylene shell and four-legs base in lacquered steel. Optional: cushion covered in leather, faux leather or fabric for the seat.

When the plastic shell and the upholstered cushion come together in a delicate synergy, the design becomes more precious and the comfort even greater.



Colors and Materials

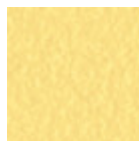
Structure



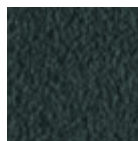
White Steel



Sand Steel



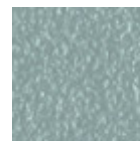
Pastel Yellow Steel



Grafite Steel



Black Steel



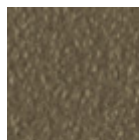
Light blue steel



Ocean Blue Steel



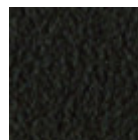
Bronze Steel



Fango Steel



Light Grey Steel



Brown Steel



Ocher Steel



Facepowder Pink Steel

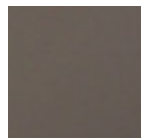


Red steel



Sage Green Steel

Coating



Polypropylene

9 Colors

Extensions



Bubble Fabric
14 Colors



Carabù Fabric
15 Colors



Cotton Club Fabric
13 Colors



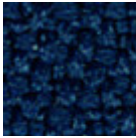
Fenix Wool Fabric
13 Colors



Hot Fabric
14 Colors



Main Line Flax Fabric
16 Colors



Mirage Fabric
6 Colors



Second Fabric
11 Colors



Scubidù Fabric
10 Colors



Visual Fabric
11 Colors



Velvet Superb
15 Colors

Dimensions

Dimensions

Image not found or type unknown

	cm	inch
A	78	30,7
B	52	20,5
C	55	21,7
D	46	18,1
E	68	26,8