



Suite Table

design AtelierNanni, 2017

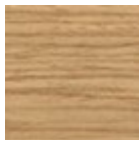
Suite desk with four-legs base in lacquered ash. Metal inserts and glass top.

Optional: document holder accessory in leather or Tuscan leather.

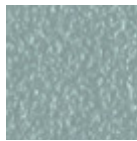


Colors and Materials

Structure



Lacquered ash
9 Colors



Light blue steel



White steel



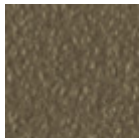
Ocean blue steel



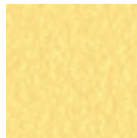
Bronze Steel



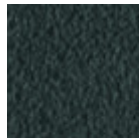
Sand steel



Fango steel



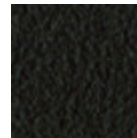
Pastel yellow steel



Grafite steel



Light grey steel



Brown steel



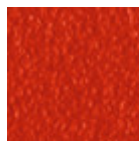
Black steel



Ocher steel



Facepowder pink
steel

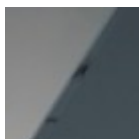


Red steel



Sage green steel

Coating



Glossy fumè glass



Extra clear glossy
white glass

Dimensions

Volumetric Details

Weight 54.5 Kg

Volume 0.37 mc

Package 3

Image not found or type unknown

	cm	inch
A	75	29.5
B	140	55.1
C	75	29.5