

Pointhouse

CLOE 3

Design **Pointhouse**

Scheda tecnica
/ Technical sheet



Sedia composta da due modelli di fusto differenti con seduta in multistrato di faggio rivestita in tessuto, ecopelle o pelle

La famiglia Cloe è composta da due modelli di fusti differenti tra loro:

- Cloe 3, fusto in filo
- Cloe 5, fusto in legno massello di frassino tinto rovere

La sua estrema comodità, le linee essenziali ed il rivestimento in tessuto, similpelle o pelle, la rendono adatta ad ogni tipo di ambiente, sia per la casa che per ambienti contract.

/ Chair with fabric, similar leather or leather covered seat and three legs solution

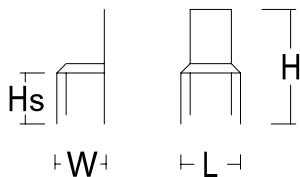
Cloe family is composed by two models that differentiate for the structure:

- Cloe 3, wire structure
- Cloe 5, oak painted solid ash structure

It's extreme comfort, essential lines and the fabric, similar leather or leather cover make this chair to be suitable both for your home as well as contract spaces.

MISURE / SIZE:

L.47XW.53XHS.46XH.88



PESO & IMBALLO / WEIGHT & PACKING:



Numero colli
Boxes number

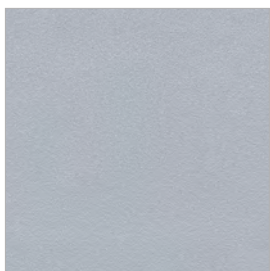
CLOE 3

Box: 58x57x54
m³ 0,179
tot. Kg. 13

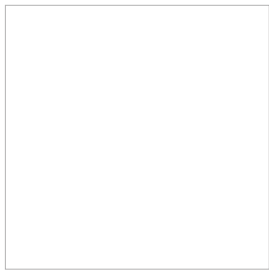
FINITURE / FINISHES:

Struttura e gambe / Structure and legs:

metallo verniciato
painted metal



02 GRIGIO ALLUMINIO
ALUMINIUM GREY



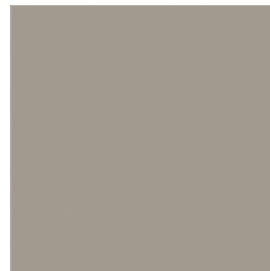
06 BIANCO OPACO
MATT WHITE



07 NERO OPACO
MATT BLACK



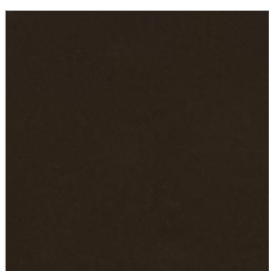
18 GRIGIO SILVER
SILVER GREY



22 TORTORA
DOVE GREY



24 BRONZO
BRONZE



0G GHISA
CAST IRON



0P GRIGIO PIOMBO OPACO
MATT LEAD GREY

FINITURE / FINISHES:

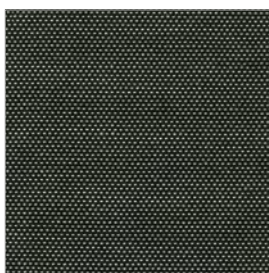
Seduta / seat:

Tessuto / Ecopelle / Pelle
Fabric / Similar leather / Leather

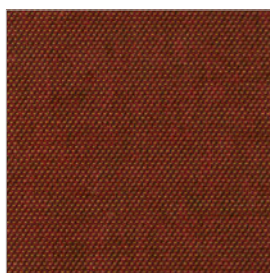
Tessuto Angel Trick / Angel Trick fabric



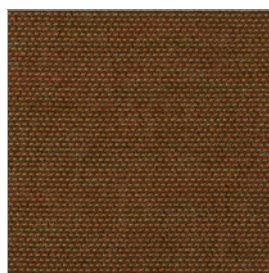
T101



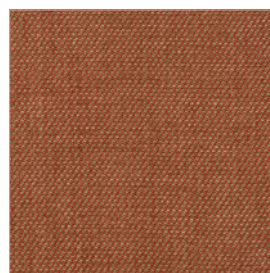
T221



T301



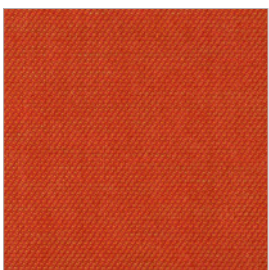
T302



T303



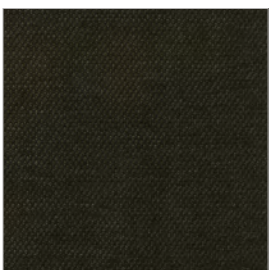
T304



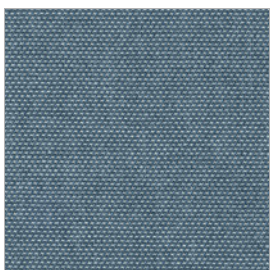
T306



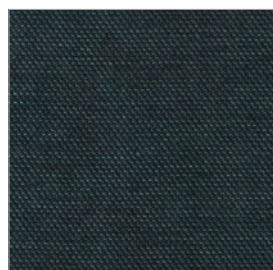
T400



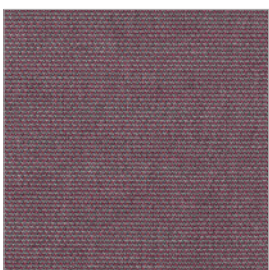
T406



T701



T702



T703



T704



T801



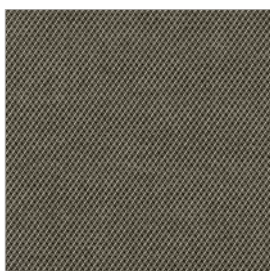
T803



T204



T405



T602



T900



abitex

abitex srl
via del cristo 84
33044 manzano
ud – italy

t +39 0432 746060
www.abitex.eu
info@abitex.eu

angel trick 08163



IT

codice doganale

54072011.

utilizzo

tende, imbottiti.

caratteristiche

100% polipropilene, altezza cm \pm 140,
peso \pm 350 gr/m².

tintura

il prodotto é tinta in massa.

lunghezza pezze

circa 35 mtl.

abrasione

50.000 cicli, ISO 12947-2.

solidità alla luce

4-5, ISO 105 B02.

solidità allo sfregamento

secco 5, umido 4/5, ISO 105 X12.

resistenza alla cucitura

ordito 3 mm, trama 2 mm, ISO 13936-2.

pilling

4-5, ISO 12945-2.

resistenza al fuoco

1IM - UNI 9175; EN 1021 1/2; BS 5852 crib 5;
NF D 60 013; California TB 117-2013;
IMO FTP Code 307 part 8.

attenzione

sono ammesse leggere differenze di colore tra differenti partite.

EN

customs code

54072011.

use

curtains, upholstered furniture.

features

100% polypropylene, width cm \pm 140,
weight \pm 350 g/m².

dyeing

solution dyed product.

roll length

approx. 35 lm.

abrasion resistance

50.000 rubs, ISO 12947-2.

colour fastness to light

4-5, ISO 105 B02.

fastness to rubbing

dry 5, wet 4/5, ISO 105 X12.

seam slippage

warp 3 mm, weft 2 mm, ISO 13936-2.

pilling

4-5, ISO 12945-2.

fire resistance

1IM - UNI 9175; EN 1021 1/2; BS 5852 crib 5;
NF D 60 013; California TB 117-2013;
IMO FTP Code 307 part 8.

attention

slight colour differences between different batches are allowed.



fireproof

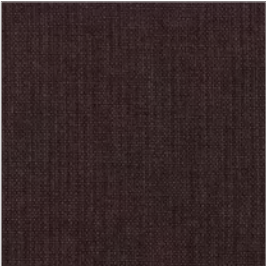


imo-med

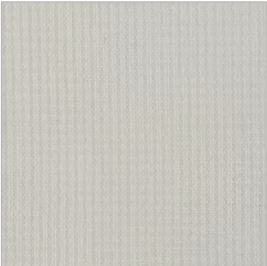
Tessuto Flash Nativa /Flash Nativa fabric



F001



F002



F101



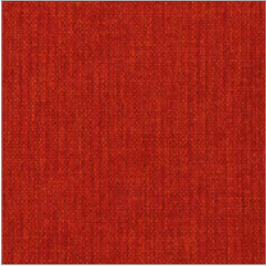
F200



F300



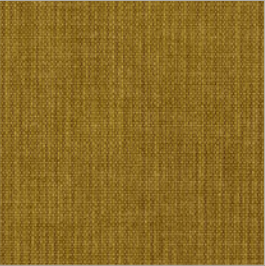
F301



F305



F403



F500



F601



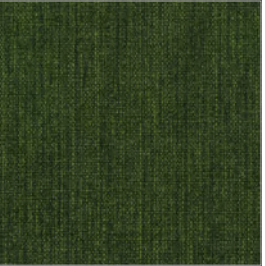
F700



F705



F707



F800



F804



F402



F600



F602



abitex

abitex srl
via del cristo 84
33044 manzano
ud – italy

t +39 0432 746060
www.abitex.eu
info@abitex.eu

flash nativa

08091



IT

codice doganale

54072011.

utilizzo

imbottiti.

caratteristiche

100% polipropilene, altezza cm \pm 140,
peso \pm 320 gr/m².

tintura

il prodotto é tinta in massa.

lunghezza pezze

circa 35 mtl.

abrasione

> 70.000 cicli, ISO 12947-2.

solidità alla luce

4-5, ISO 105 B02.

solidità allo sfregamento

secco 5, umido 4/5, ISO 105 X12.

resistenza alla cucitura

ordito 3 mm, trama 3 mm, ISO 13936-2.

pilling

4-5, ISO 12945-2.

attenzione

sono ammesse leggere differenze di colore tra differenti partite.

EN

customs code

54072011.

use

upholstered furniture.

features

100% polypropylene, width cm \pm 140,
weight \pm 320 g/m².

dyeing

solution dyed product.

roll length

approx. 35 lm.

abrasion resistance

50.000 rubs, ISO 12947-2.

colour fastness to light

4-5, ISO 105 B02.

fastness to rubbing

dry 5, wet 4/5, ISO 105 X12.

seam slippage

warp 3 mm, weft 3 mm, ISO 13936-2.

pilling

4-5, ISO 12945-2.

attention

slight colour differences between different batches are allowed.

Tessuto M.A.M. / *M.A.M. Fabric*



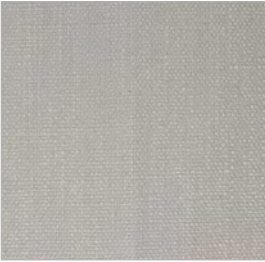
M205 ANTRACITE
ANTHRACITE



M616 FERRO
IRON



M027 CENERE
ASH



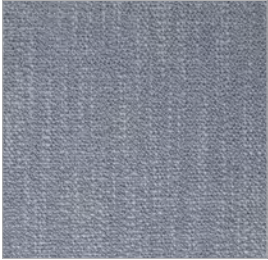
M019 PERLA
PEARL



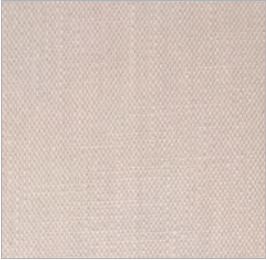
M014 BLU
BLUE



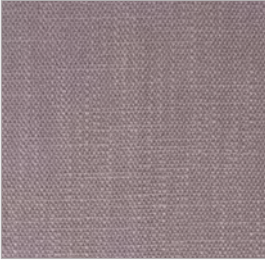
M015 JEANS
JEANS



M016 AZZURRO
LIGHT BLUE



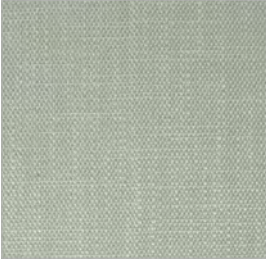
M105 CIPRIA
POWDER PINK



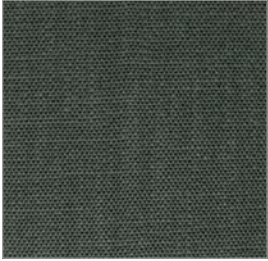
M023 MALVA
MAUVE



M080 AMARENA
BLACK CHERRY



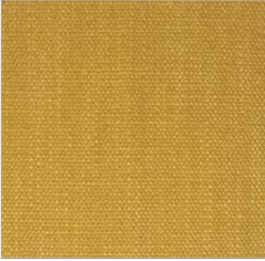
M021 PALUDE
SWAMP



M204 MUSCHIO
MOSS



M013 OTTANIO
TEAL



M028 GIALLO
YELLOW



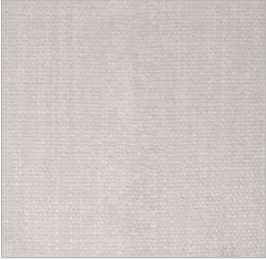
M007 TERRACOTTA
TERRACOTTA



M002 BISCOTTO
BISCUIT



M001 BEIGE
BEIGE



M200 NATUR
NATUR



M.A.M.
tessuti

181 Favignana



IT

altezza

140 cm

composizione

87PL 13VI

peso mtl

840 gr

resistenza al pilling

4 - ISO 12945 - 2

resistenza all'abrasione

50000 metodo martindale BSI 5690

solidità alla luce

5 XENO TEST

note

Idrorepellente

EN

hight

140 cm

structure composition

87PL 13VI

weight mtl

840 gr

pilling resistance

4 - ISO 12945 - 2

abrasion resistance

50000 metodo martindale BSI 5690

fastness to light

5 XENO TEST

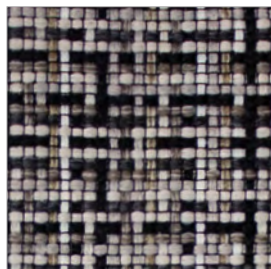
note

waterproof

Tessuto M.A.M. Idrorepellente / *Water repellent M.A.M. fabric*

Un ampliamento della gamma tessuti MAM, dedicata ai cuscini accessorio del programma TIPA.
Questi tessuti idrorepellenti rendono il cuscino perfetto per l'utilizzo in ambienti cucina come in ambienti outdoor.

*An extension of the MAM fabric range, dedicated to the accessory cushions of the TIPA program.
These water-repellent fabrics make the cushion perfect for use in both kitchen and outdoor environments.*



S018



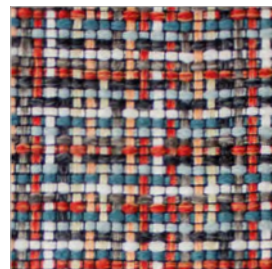
S021



S024



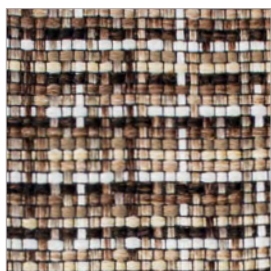
S080



S101



S130



S800



SCHEMA TECNICA

ART. 2468 MOSAICO

	VALORI	METODO
ALTEZZA	140 Cm	
COMPOSIZIONE	100 PL	
PESO MTL	520 Gr	
RESISTENZA AL PILLING	4	
RESISTENZA ALL'ABRASIONE	40000 cicli	metodo MARTINDALE BSI 5690
SOLIDITA' ALLA LUCE	4	XENO TEST

MODALITA' DI LAVAGGIO	
-----------------------	--

STABILITA' LAVAGGIO

Lavaggio a Secco	TRAMA %	0	ORDITO %	0
Lavaggio a Acqua	TRAMA %	0	ORDITO %	0

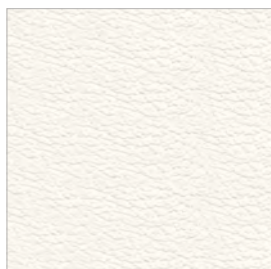
NOTE: IDROREPELENTE

ANTIMACCHIA

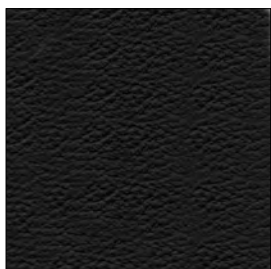
Ecopelle / Similar leather

E' un tessuto che ha l'aspetto della pelle o del cuoio ma non è realizzato con materiale animale. Esso è composto da tessuto su cui viene spalmato del materiale plastico (poliuretano o poliammide) per simulare la superficie del pellame, ciò ne determina una facile pulizia ed impermeabilità.

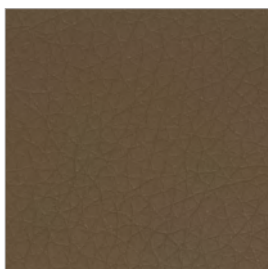
It is a fabric that has the look of leather but it is not realized with animal material. This is composed by a fabric on which is spread some plastic material (polyurethane or polyamide) to create the leather surface, that makes it easy to clean and waterproof.



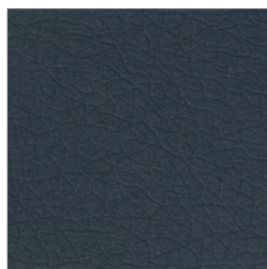
48 BIANCO
WHITE



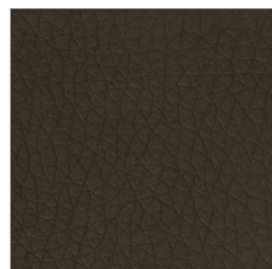
49 NERO
BLACK



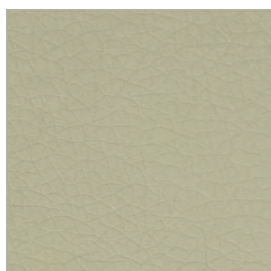
50 TABACCO
TOBACCO



51 BLU
BLUE



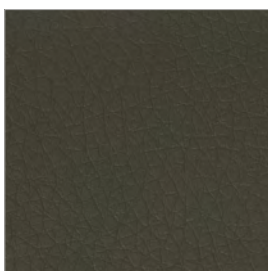
52 TESTA DI MORO
DARK BROWN



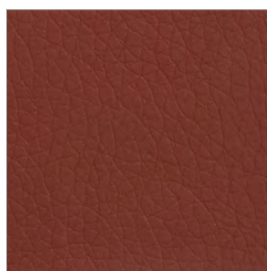
53 CEMENTO
CEMENT



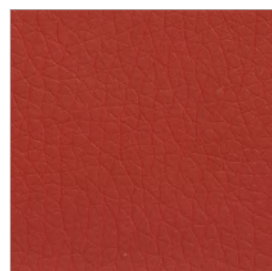
55 CRETA
TAUPE



56 PIOMBO
OLIVE GREY



57 BORDEAUX
BORDEAUX

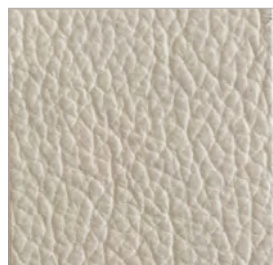


58 ROSSO
RED

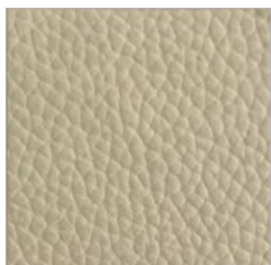
Pelle KEEN /KEEN leather

Pelle realizzata su bufali, conciata al cromo, tintura all'anilina passante in botte, rifinita all'acqua in tinta unita. Mano morbida di facile utilizzo su qualsiasi tipologia di arredamento. Pelli da mq. 3.8/4 – Spessore 0.9-1.0 mm.

Leather produced from Buffalo, water finished in solid colours. Soft hand, useful for every application in furnishing. Skins about 3.8/4 sq.m thickness 0.9-1.0 mm.



P501



P502



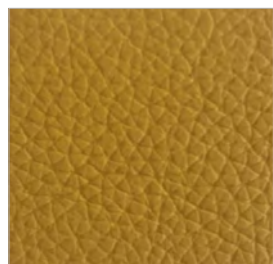
P503



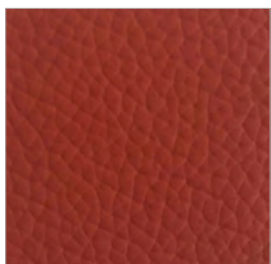
P504



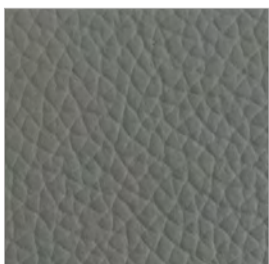
P505



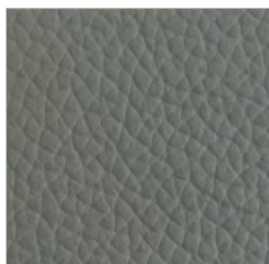
P506



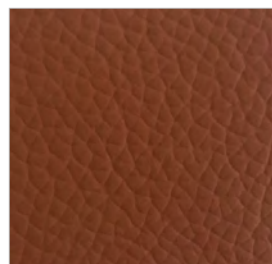
P507



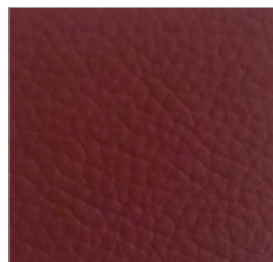
P508



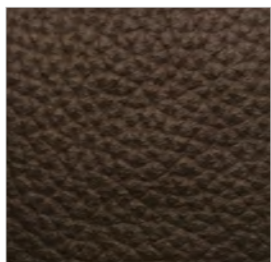
P509



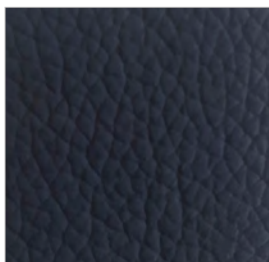
P510



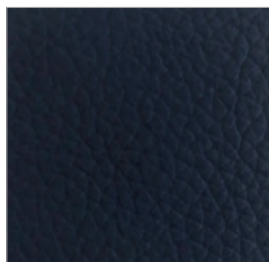
P511



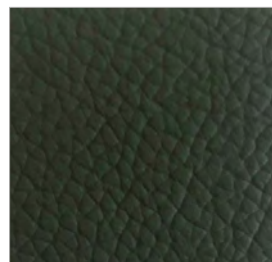
P512



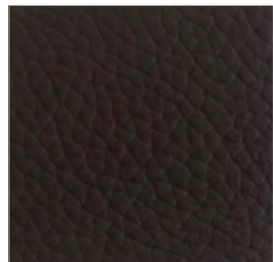
P513



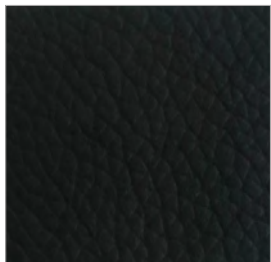
P514



P515



P516



P517



P842