

Pointhouse

DROP

Design **Pointhouse**

Scheda tecnica
/ Technical sheet



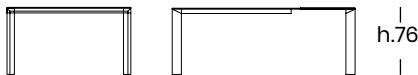
Tavolo con struttura in acciaio e gambe in estruso di alluminio a forma poligonale.

Struttura composta da profili in acciaio tagliati a laser, verniciata a polveri epossidiche. Giunto angolare d'unione stampato in lega di alluminio, in finitura spazzolata lucida o verniciata. Gambe in alluminio verniciato a forma poligonale, leggermente inclinate. Adatto per ogni ambiente, il tavolo Drop offre infiniti abbinamenti fra la struttura e il piano, in varie dimensioni per adattarsi al meglio ad ogni esigenza.

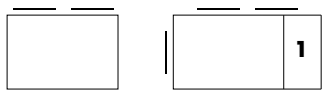
Table with steel structure and polygonal extruded aluminium legs.

Structure composed of laser-cut steel profiles, epoxy painted. Die-casted aluminium junctions, in brushed glossy or painted finish. Polygonal aluminium painted legs, slightly inclined. Suitable for any location, Drop table offers infinite combinations of structure and top, in various dimensions, to adapt better to every need.

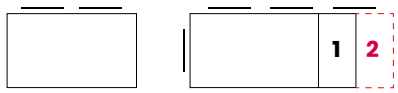
MISURE / SIZE:



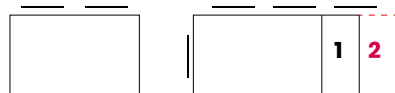
120X80 + (40)



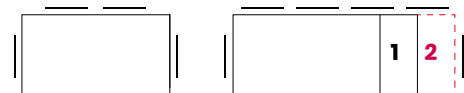
140X80 + (40+40)



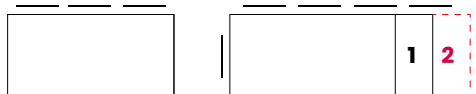
140X90 + (40+40)



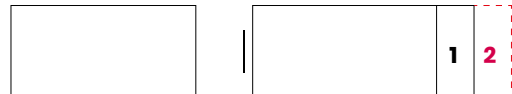
160X90 + (40+40)



180X90 + (40+40)



200X100 + (40+40)



1 ALLUNGA DI SERIE / STANDARD WITH 1 EXTENSION
2 ALLUNGA OPTIONAL / OPTIONAL WITH 2 EXTENSIONS

PESO & IMBALLO / WEIGHT & PACKING:



Numero colli
Boxes number

DROP 120X80

1 collo per telaio + gambe:
1 box per frame + legs:
cm 128x68x15 - Kg. 18

1 collo per piano + allunga fissa:
1 box for top + extension:
cm 126x85x8 - Kg. 17

m³ 0,217 tot. Kg. 35
(+ 13 Kg. per vetro / glass)
(+ 40 Kg. per ceramica / ceramic)

DROP 140X80

1 collo per telaio + gambe:
1 box per frame + legs:
cm 148x68x15 - Kg. 20

1 collo per piano + allunga fissa:
1 box for top + extension:
cm 146x85x8 - Kg. 19

m³ 0,250 tot. Kg. 39
(+ 15 Kg. per vetro / glass)
(+ 46 Kg. per ceramica / ceramic)

DROP 140X90

1 collo per telaio + gambe:
1 box per frame + legs:
cm 148x79x15 - Kg. 23

1 collo per piano + allunga fissa:
1 box for top + extension:
cm 146x95x8 - Kg. 20

m³ 0,263 tot. Kg. 43
(+ 16 Kg. per vetro / glass)
(+ 49 Kg. per ceramica / ceramic)

DROP 160X90

1 collo per telaio + gambe:
1 box per frame + legs:
cm 148x79x15 - Kg. 25

1 collo per piano + allunga fissa:
1 box for top + extension:
cm 166x95x8 - Kg. 23

m³ 0,301 tot. Kg. 48
(+ 17 Kg. per vetro / glass)
(+ 54 Kg. per ceramica / ceramic)

DROP 180X90

1 collo per telaio + gambe:
1 box per frame + legs:
cm 168x79x15 - Kg. 26

1 collo per piano + allunga fissa:
1 box for top + extension:
cm 186x95x8 - Kg. 26

m³ 0,340 tot. Kg. 52
(+ 19 Kg. per vetro / glass)
(+ 59 Kg. per ceramica / ceramic)

DROP 200X100

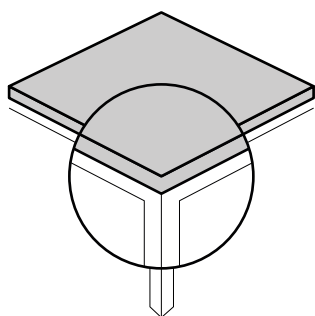
1 collo per telaio + gambe:
1 box per frame + legs:
cm 208x106x15 - Kg. 30

1 collo per piano + allunga fissa:
1 box for top + extension:
cm 208x105x8 - Kg. 30

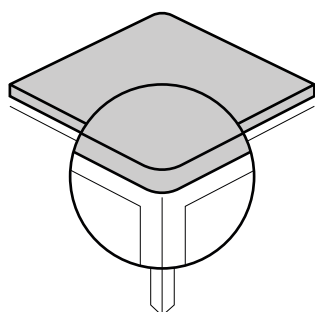
m³ 0,506 tot. Kg. 60
(+ 20 Kg. per vetro / glass)
(+ 65 Kg. per ceramica / ceramic)

TIPOLOGIA ANGOLI DEL PIANO / TOP EDGE TYPOLOGY:

PIANO CON ANGOLO NETTO E TAGLIO A 90° / TOP WITH STRAIGHT EDGE AND 90° ANGLE



PIANO CON ANGOLO NETTO E TAGLIO A 90° / TOP WITH STRAIGHT EDGE AND 90° ANGLE



OPTIONAL / OPTIONALS

VASSOIO FLOCCATO

Con il termine floccatura si intende un particolare processo per l'ottenimento dell'effetto velluto nel vassoio dove riporre le allunghe, per proteggere l'eleganza nel tempo di materiali più delicati, Pointhouse consiglia sempre di includere al proprio acquisto il vassoio floccato nero.

VASSOIO FLOCCATO

Structure composed of laser-cut steel profiles, epoxy painted. Die-casted aluminium junctions, in brushed glossy or painted finish. Polygonal aluminium painted legs, slightly inclined. Suitable for any location, Drop table offers infinite combinations of structure and top, in various dimensions, to adapt better to every need.

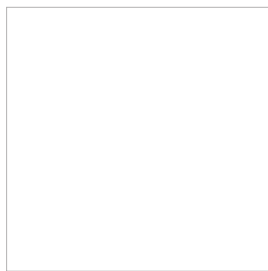


FINITURE / FINISHES:

Struttura e gambe / Structure and legs:

alluminio verniciato:

painting aluminum:



06 BIANCO OPACO
MATT WHITE



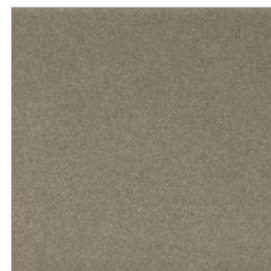
07 NERO OPACO
MATT BLACK



18 GRIGIO SILVER
SILVER GREY



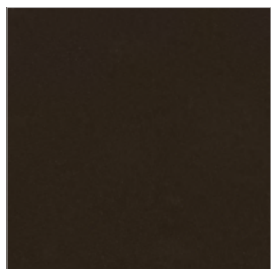
22 TORTORA
DOVE GREY



24 BRONZO
BRONZE



25 ROSSO MATTONE
BRICK RED



0G GHISA
CAST IRON

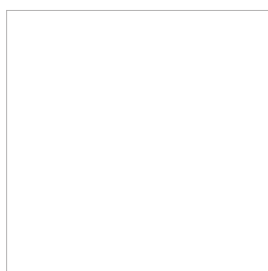


0P GRIGIO PIOMBO OPACO
MATT LEAD GREY

Angoli / Corner junctions:

verniciato / cromato:

painting / chromed:



06 BIANCO OPACO
MATT WHITE



07 NERO OPACO
MATT BLACK



18 GRIGIO SILVER
SILVER GREY



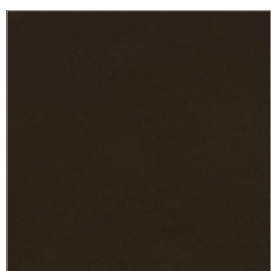
22 TORTORA
DOVE GREY



24 BRONZO
BRONZE



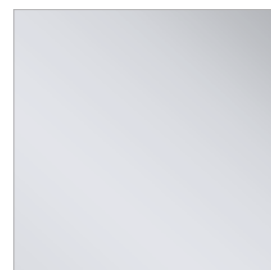
25 ROSSO MATTONE
BRICK RED



0G GHISA
CAST IRON



0P GRIGIO PIOMBO OPACO
MATT LEAD GREY



11 CROMO LUCIDO
GLOSSY CHROME

Piano e allunga / Top and extensions:

melaminico / Cleaf / vetro / Fenix / impiallacciato / ceramica:
melamine / Cleaf / glass / Fenix / veneered / ceramic:

Melamminico

E' un rivestimento prefinito e viene ottenuto utilizzando carte (stampate) impregnate e spalmate sul lato decorativo con resine melaminiche (es. pannelli di truciolare o mdf) garantendo ottima stabilità e una sufficiente resistenza all'usura.

/Melamine

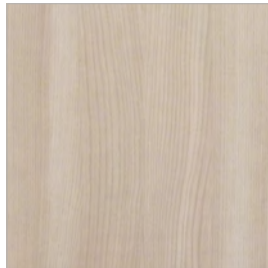
It is a prefinished covering and it is obtained by using impregnated and coated papers on the decorative side with melamine resins (ex. Chipboard panels or mdf) guaranteeing an excellent stability and a sufficient wear resistance.



8A BIANCO LARICE
WHITE LARCH



8F BIANCO OPACO
MATT WHITE



8G OLMO CHIARO
LIGHT ELM



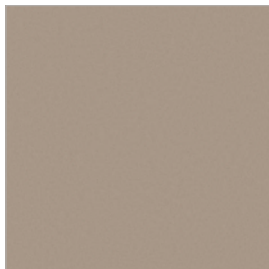
8L GRIGIO GRAFITE OPACO
MATT GRAPHITE GREY



8P ROVERE CRUDO
RAW OAK



8S QUERCIA BIANCO
WHITE OAK



8U TORTORA
DOVE GREY



MA IRON SATINATO
SATIN IRON

Vetro temperato

Il vetro temperato è considerato "vetro di sicurezza" perchè, se dovesse rompersi, si frammenta in tanti piccoli pezzi non pericolosi per l'incolumità delle persone.

Si ottiene sottoponendo le lastre di vetro ad un trattamento termico a circa 700 gradi seguito da un raffreddamento istantaneo. Tale procedimento crea una compressione superficiale in grado di aumentare la resistenza della lastra alle sollecitazioni meccaniche e allo shock termico.

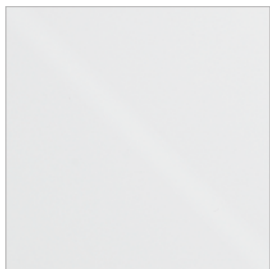
Il vetro temperato resiste a temperature superiori a 250°.

/Tempered glass

Tempered glass is called also "safety glass" because in case of break it splits in several small pieces, not dangerous.

Tempered glass it's the result of a termic treatment up to 700 C° followed by a fast cooling. This process create a superficial compression which increase the resistance of the surface to the mechanical forces and to the termic shock.

Tempered glass withstands temperature above 250 C°

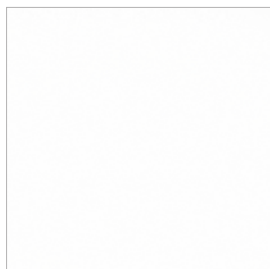


67 EXTRABIANCO OPACO
MATT EXTRAWHITE

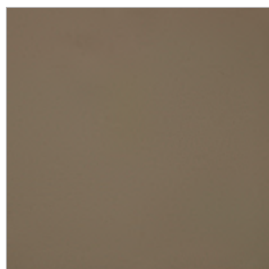
FENIX®

La nuova generazione di materiali smart per l'interior design creati da Arpa Industriale per applicazioni verticali e orizzontali tipiche dell'interior design. Con una bassa riflessione della luce, la superficie è estremamente opaca, anti impronte e piacevolmente soft touch. E in caso di micro graffi superficiali è riparabile termicamente.

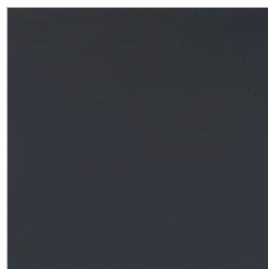
The new generation of smart materials for interior design created by Arpa Industriale for vertical and horizontal applications typical of the interior design. With low light reflection, the surface is extremely matt, anti-fingerprint and pleasantly soft touch. In the case of superficial micro scratches it is thermally repairable.



W1 BIANCO OPACO
MATT WHITE



W2 TORTORA OPACO
MATT DOVE-GREY



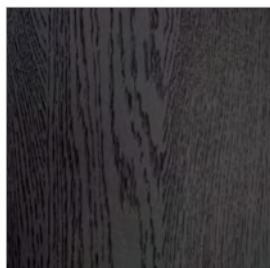
W3 GRIGIO OPACO
MATT GREY

Legno impiallacciato

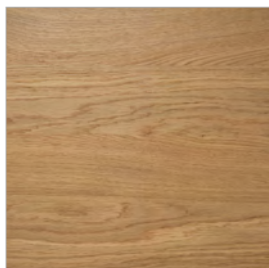
Si realizza utilizzando fogli di legno nobile di basso spessore, ricavati direttamente dai tronchi di miglior qualità. Vengono incollati e pressati su supporti di varia natura (es. pannelli di truciolare o mdf) e successivamente finiti nella tonalità desiderata.

/Veneered wood

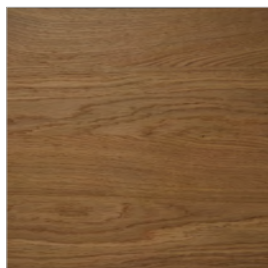
It is made using low thickness noble wood sheets, obtained directly from the best quality logs. They are glued and pressed on various types of supports (eg chipboard or MDF panels) and then finished in the desired shade.



35 ROVERE COTTO
BURNISHED OAK



38 ROVERE GRAFITE
GRAPHITE OAK



39 ROVERE NATURALE
NATURAL OAK

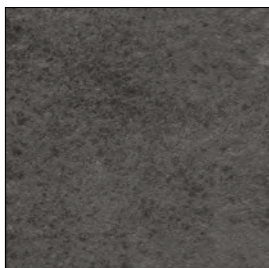
LAMINAM®

Le lastre ceramiche Laminam si rivolgono al mondo dell'arredo. Per le eccellenti performance tecniche, le superfici Laminam sono ideali per gli impieghi più delicati nei quali è necessario garantire la massima igiene e resistenza. Le virtù estetiche ed il grande formato, veri e propri plus artistici, garantiscono la continuità della materia in tutto l'ambiente tingendolo con toni naturali e sofisticati.

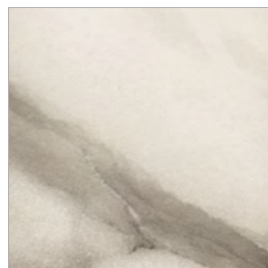
The laminam ceramic slabs are design for the world of furnishing. Thanks to their excellent technical performance, Laminam slabs are ideal for the most delicate of uses, requiring maximum hygiene and resistance. The aesthetic virtues and the large size offer a major artistic advantage ensuring material continuity throughout the ambience with its sophisticated, natural shades.



K1 OXIDE NERO
BLACK OXIDE



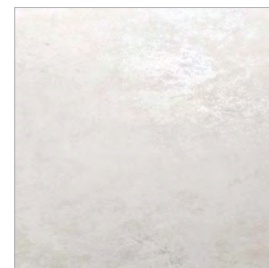
K3 PIETRA DI SAVOIA ANTRACITE
PIETRA DI SAVOIA ANTHRACITE



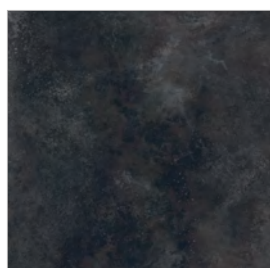
K4 MARMO STATUARIO
WHITE MARBLE



K5 PIETRA DI SAVOIA GRIGIA
PIETRA DI SAVOIA GREY



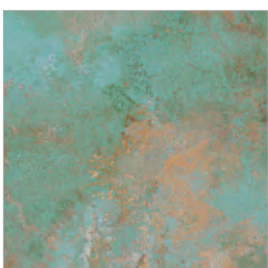
K6 OXIDE BIANCO
WHITE OXIDE



KA NERO LAVAGNA
CHALKBOARD BLACK



KB FOKOS SALE
FOKOS SALT



KD OXIDE VERDERAME
VERDIGRIS OXIDE

CLEAF

Marmo: una finitura morbida e setosa che si abbina a decorativi tinta unita o effetto pietra.

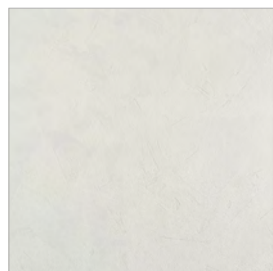
Legno: l'effetto spazzolatura tipico delle essenze lignee lavorate da abili mani artigiane.

Beton: Ispirata alle murature urbane dell'architettura industriale, ripropongono la profondità di una parete in calcestruzzo o intonaco spatolato.

Marble: A soft and silk-smooth finish that can match solid colour or stone elements.

Wood: The brushed effect typical of the wood essences worked by skilled handcraft.

Beton: Inspired by urban walls typical of industrial architecture, reintroduce the depth of a concrete or plaster wall.



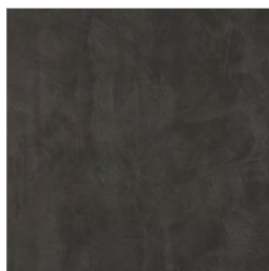
7A BIANCO
WHITE



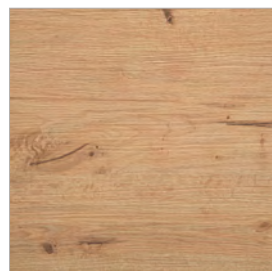
7B TORTORA
DOVE GREY



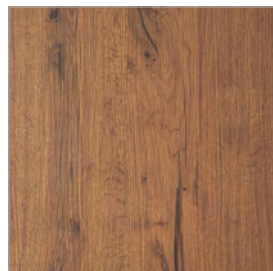
7D GRIGIO
GREY



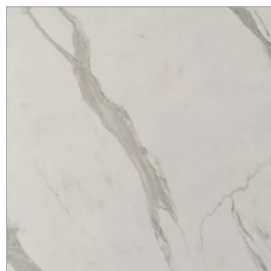
7E GRAFITE
GRAPHITE



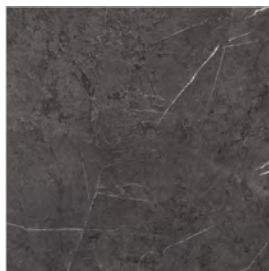
7F ROVERE NATURALE
NATURAL OAK



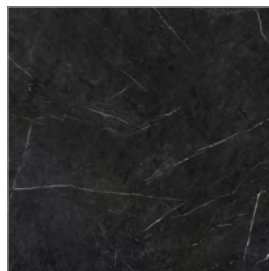
7G ROVERE COTTO
BURNISHED OAK



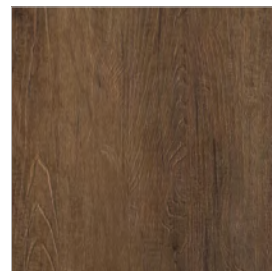
7I MARMO BIANCO
WHITE MARBLE



7M MARMO GRIGIO
GREY MARBLE



7L MARMO NERO
BLACK MARBLE



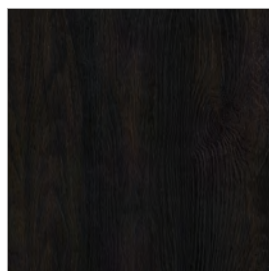
7N LECCIO
HOLM OAK



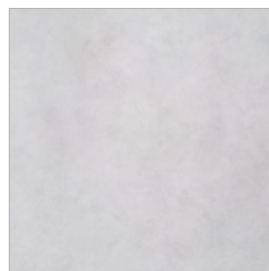
7O OLMO NATURALE
NATURAL ELM



7P LEGNO SBIANCATO
BLEACHED WOOD



7Q LEGNO BRUCIATO
BURNT WOOD



7V GHIACCIO
ICE



7W PIETRA CHIARA
LIGHT STONE



7Y PIETRA SCURA
DARK STONE