

# sitalia



— human  
office chairs  
selection



## — need *more* for your project?

Sitia concept is “the human contract”: a new way of conceiving contract and professional environments to respond to the desire for “human” in a contemporary world. With Sitia furnishings, work and hospitality spaces become versatile, functional and integrated, ready to give to those who are living in them a home atmosphere and a more human dimension.

Il concept Sitia è “the human contract”: un nuovo modo di concepire gli ambienti contract e professionali per rispondere alla voglia di “human” della contemporaneità. Con gli arredi Sitia, gli spazi lavorativi e di ospitalità diventano luoghi versatili, funzionali e integrati, pronti a donare a chi li vive un’atmosfera domestica e una dimensione più umana.

## discover sitia’s *main catalogue!*

Scan the code >



tables, coffee tables,  
sofas, pouffes, chairs,  
complements by sitia

# — the human office chairs

s''

## OFFICE CHAIRS

Darwin	16
Black or White	22
Beauté	26
Eclipse	30
Havana	34
Idesia	42
Sabal	46
Tempo	50
Major	56
Swingo	64

MATERIALS & FINISHINGS	109
------------------------	-----

# — humanly made in Sitia

1. About Sitia	68
2. Focus: home office	72
3. Tailor made in Italy	77
4. Projects	81













Beauté 26





Regolo, Darwin 16

s.











s''

Swingo 64





Darwin 16, Side





Pergy, Trimundo, Beauté 26



Eclipse 30







Nebu, Black or White 22



sedie da ufficio



— *office  
chairs*



# — *Darwin*

Design by Pergentino Battocchio  
2015

Comfort, design  
and premium finishings.  
Darwin's office chairs  
collection is made  
up of a structure that  
anatomically supports  
the body and favours  
relaxation, promoting  
a work concept which  
aims at people's wellness.

Comfort, design e finiture premium. La collezione di poltrone e sedie da ufficio Darwin è formata da una struttura che sostiene anatomicamente il corpo e ne favorisce il relax, promuovendo un concetto di lavoro che punta al benessere delle persone.







## OFFICE CHAIRS



**Upholstered executive armchair,  
high backrest, 5-star base, swivel,  
updown**

**Poltrona direzionale imbottita,  
schienale alto, base a 5 razze,  
girevole, updown**

Sizes: W 715 x D 735 x  
H 1305/1435 mm  
S H 505/635 mm  
Code: DARWA S



**Upholstered executive armchair,  
mid backrest, 5-star base, swivel,  
updown**

**Poltrona semi-direzionale imbottita,  
schienale medio, base a 5 razze,  
girevole, updown**

Sizes: W 715 x D 735 x  
H 1050/1160 mm  
S H 505/635 mm  
Code: DARWM S



**Upholstered executive armchair,  
low backrest, 5-star base, swivel,  
updown**

**Poltrona semi-direzionale imbottita,  
schienale basso, base a 5 razze,  
girevole, updown**

Sizes: W 715 x D 735 x  
H 830/940 mm  
S H 505/635 mm  
Code: DARWB S



**Upholstered armchair, low  
backrest, 4-star base, swivel,  
self return**

**Poltrona imbottita, schienale basso,  
base a 4 razze, girevole,  
auto allineante**

Sizes: W 685 x D 690 x H 854 mm  
S H 479 mm  
Code: DARWV E



**Upholstered visitor armchair,  
4 legged base, swivel**

**Poltrona visitatore imbottita,  
base 4 gambe, girevole**

Sizes: W 685 x D 690 x H 860 mm  
S H 483 mm  
Code: DARWV D



**Upholstered visitor armchair, steel  
sled base**

**Poltrona visitatore imbottita,  
base a slitta in acciaio**

Sizes: W 640 x D 625 x H 810 mm  
S H 465 mm  
Code: DARWV A3



Darwin, Nebu, Felicity





Dapper, Darwin, Klera





# — *Black or White*

Design by Fiorenzo Dorigo  
2002

Minimalist and thin, the Black or White office chair develops considering a series of structural elements built around a technological core, which permits the anatomical support of the body, supporting its correct posture during work. This chair distinguishes itself for the various technical characteristics, like adjustable headrest with cervical support, adjustable lumbar support, seat angle and depth adjustment, as well as adjustable armrests.

Minimalista e snella, la sedia da ufficio Black or White si sviluppa grazie ad una serie di elementi strutturali costruiti attorno ad un'anima tecnologica che consente di sorreggere anatomicamente il corpo, supportandone la postura corretta durante il lavoro. Questa sedia si distingue in modo particolare per le varie caratteristiche tecniche, come il poggiatesta mobile con supporto cervicale, supporto lombare regolabile, regolazione dell'angolo e della profondità di seduta, braccioli regolabili.





Scan the code  
to watch the video

S<sup>®</sup>





## OFFICE CHAIRS



**Upholstered executive armchair,  
high backrest, 5-star base, swivel  
updown**

Poltrona direzionale imbottita,  
schienale alto, base a 5 razze,  
girevole, updown

Sizes: W 715 x D 715 x  
H 1215/1340 mm  
S H 490/620 mm  
Code: BOWAI S



**Upholstered executive armchair,  
mid backrest, 5-star base, swivel  
updown**

Poltrona semi-direzionale imbottita,  
schienale medio, base a 5 razze,  
girevole, updown

Sizes: W 715 x D 715 x  
H 990/1120 mm  
S H 490/620 mm  
Code: BOWBI S





The mark of  
responsible forestry

available FSC® certified on request  
disponibile certificato FSC® su richiesta





# — *Beauté*

Design by Pergentino Battocchio & Fiorenzo Dorigo  
2003

Concrete and structural comfort characterize the Beauté chair, created for an elegant and welcoming contract space. Its anatomically contoured quilted backrest is the design element which enhances the craftsmanship's high quality without compromising strength and practicality of use.

Un comfort concreto e strutturale distingue la sedia Beauté, creata per un contract elegante ed accogliente. Il suo schienale trapuntato, sagomato anatomicamente, è l'elemento stilistico della seduta che esalta l'alta qualità della lavorazione artigianale, senza compromettere robustezza e praticità d'uso.







## OFFICE CHAIRS



**Upholstered executive armchair,  
high backrest, 5-star base, swivel,  
updown**

**Poltrona direzionale imbottita,  
schienale alto, base a 5 razze,  
girevole, updown**

Sizes: W 715 x D 715 x  
H 1140/1270 mm  
S H 455/585 mm  
Code: BEA-A S



**Upholstered executive armchair,  
mid backrest, 5-star base, swivel,  
updown**

**Poltrona semi-direzionale imbottita,  
schienale medio, base a 5 razze,  
girevole, updown**

Sizes: W 715 x D 715 x  
H 910/1090 mm  
S H 455/585 mm  
Code: BEA-B S





The mark of  
responsible forestry

available FSC® certified on request  
disponibile certificato FSC® su richiesta





# — *Eclipse*

Design by Fiorenzo Dorigo  
2002

Efficiency and aesthetic linearity are key features of the Eclipse chair, conceived for more informal professional moments. Characterized by a deeply ergonomic design, Eclipse is specifically designed to support the user while working.

Efficienza e linearità estetica sono i connotati di Eclipse, la sedia pensata per le situazioni professionali più informali. Caratterizzata da un design fortemente ergonomico, la collezione è stata studiata appositamente per sostenere e supportare la persona nello spazio lavorativo.







## OFFICE CHAIRS



**Upholstered task chair, high backrest, 5-star base, swivel, updown**

**Sedia operativa imbottita, schienale alto, base a 5 razze, girevole, updown**

Sizes: W 695 x D 695 x  
H 1000/1115 mm  
S H 480/590 mm  
Code: ECLAQ V/X



**Task chair, mesh mid backrest 5-star base, swivel, updown**

**Sedia operativa, schienale medio in rete, base a 5 razze, girevole, updown**

Sizes: W 695 x D 695 x  
H 910/1090 mm  
S H 480/590 mm  
Code: ECLR\* V/X







# — *Havana*

Design by Pergentino Battocchio  
2004

Havana chairs represent the perfect union between order and beauty in working environments. A collection which grants comfort and quality and, at the same time, timeless beauty. Total customization: unlimited combinations of backrests, armrests and bases, the Havana collection can be easily placed in any location and allows to furnish all spaces with a hierarchical range of products.

Le sedie Havana rappresentano il connubio perfetto tra ordine ed estetica negli ambienti lavorativi. Una collezione che garantisce comfort e qualità e, al contempo, estetica senza tempo. Personalizzazione totale: con le infinite combinazioni tra schienale, braccioli e gambe, la collezione Havana si colloca facilmente in ogni spazio e permette di arredare tutti gli ambienti con una gamma gerarchica completa.







## OFFICE CHAIRS



**Upholstered executive armchair,  
high backrest, 5-star base, swivel,  
updown**

Poltrona direzionale imbottita,  
schienale alto, base a 5 razze,  
girevole, updown

Sizes: W 715 x D 715 x  
H 1235/1360 mm  
S H 505/630 mm  
Code: HAVAI S



**Upholstered executive armchair,  
mid backrest, 5-star base, swivel,  
updown**

Poltrona semi-direzionale imbottita,  
schienale medio, base a 5 razze,  
girevole, updown

Sizes: W 715 x D 715 x  
H 1125/1250 mm  
S H 505/630 mm  
Code: HAVBI S



**Upholstered visitor armchair, steel  
sled base**

Poltrona visitatore imbottita, base  
a slitta in acciaio

Sizes: W 625 x D 620 x  
H 1045 mm  
S H 460 mm  
Code: HAVVI T



The mark of  
responsible forestry

available FSC® certified on request  
disponibile certificato FSC® su richiesta

s<sup>''</sup>



Havana, Tondo



## OFFICE CHAIRS



**Executive armchair, high backrest in mesh and upholstered seat, 5-star base, swivel, updown**

**Poltrona direzionale, schienale alto in rete e sedile imbottito, base a 5 razze, girevole, updown**

Sizes: W 715 x D 715 x  
H 1235/1360 mm  
S H 505/630 mm  
Code: HAVAM\* S



**Executive armchair, mid backrest in mesh and upholstered seat, 5-star base, swivel, updown**

**Poltrona semi-direzionale, schienale medio in rete e sedile imbottito, base a 5 razze, girevole, updown**

Sizes: W 715 x D 715 x  
H 1125/1250 mm  
S H 505/630 mm  
Code: HAVBM\* S



**Visitor armchair, backrest in mesh and upholstered seat, steel sled base**

**Poltrona visitatore, schienale in rete e sedile imbottito, base a slitta in acciaio**

Sizes: W 625 x D 620 x  
H 1045 mm  
S H 460 mm  
Code: HAVVM\* T



**Executive armchair, high backrest and seat in mesh, 5-star base, swivel, updown**

**Poltrona direzionale, schienale alto e sedile in rete, base a 5 razze, girevole, updown**

Sizes: W 715 x D 715 x  
H 1235/1360 mm  
S H 505/630 mm  
Code: HAVAR S



**Executive armchair, mid backrest and seat in mesh, 5-star base, swivel, updown**

**Poltrona semi-direzionale, schienale medio e sedile in rete, base a 5 razze, girevole, updown**

Sizes: W 715 x D 715 x  
H 1125/1250 mm  
S H 505/630 mm  
Code: HAVBR S



**Visitor armchair, backrest and seat in mesh, steel sled base**

**Poltrona visitatore schienale medio e sedile in rete, base a slitta in acciaio**

Sizes: W 625 x D 620 x  
H 1045 mm  
S H 460 mm  
Code: HAVVR T



The mark of  
responsible forestry

available FSC® certified on request  
disponibile certificato FSC® su richiesta

s<sup>2</sup>





## OFFICE CHAIRS



**Executive armchair, low backrest with soft pad and mesh support, 5-star base, swivel, updown**

Poltrona semi-direzionale, schienale basso con soft pad e supporto in rete, base a 5 razze, girevole, updown

Sizes: W 715 x D 715 x H 980/1100 mm  
S H 505/630 mm  
Code: HAV1P\* S



**Visitor armchair, low backrest with soft pad and mesh support, 4-star base, swivel, self return**

Poltrona visitatore, schienale basso con soft pad e supporto in rete, base a 4 razze, girevole, auto allineante

Sizes: W 630 x D 630 x H 970 mm  
S H 460 mm  
Code: HAV1P\* D



**Executive armchair, low backrest in mesh and upholstered seat, 5-star base, swivel, updown**

Poltrona semi-direzionale, schienale basso in rete e sedile imbottito base a 5 razze, girevole, updown

Sizes: W 715 x D 715 x H 980/1100 mm  
S H 505/630 mm  
Code: HAV1M\* S



**Visitor armchair, low backrest in mesh and upholstered seat, 4-star base, swivel, self return**

Poltrona visitatore, schienale basso in rete e sedile imbottito, base a 4 razze, girevole, auto allineante

Sizes: W 630 x D 630 x H 970 mm  
S H 460 mm  
Code: HAV1M\* D



**Executive armchair, low backrest  
and seat in mesh, 5-star base,  
swivel, updown**

Poltrona semi-direzionale, schienale  
basso e sedile in rete, base a 5  
razze, girevole, updown

Sizes: W 715 x D 715 x  
H 980/1100 mm  
S H 505/630 mm  
Code: HAV1R S



**Visitor armchair, low backrest  
and seat in mesh, 4-star base,  
swivel, self return**

Poltrona visitatore, schienale basso  
e sedile in rete, base a 4 razze,  
girevole, auto allineante

Sizes: W 630 x D 630 x H 970 mm  
S H 460 mm  
Code: HAV1R D



The mark of  
responsible forestry

available FSC® certified on request  
disponibile certificato FSC® su richiesta



# — *Idesia*

Design by Pergentino Battocchio & Fiorenzo Dorigo  
2003

The Idesia chair combines technique and aesthetics. The arch, which supports and envelops the seat, creates a sophisticated curve, an element of incomparable class and high design value, functional to the comfortable armrests.

Idesia è una sedia connubio tra tecnicismo ed estetica. L'arco che sostiene e avvolge la seduta produce una sofisticata curva, elemento di impareggiabile classe ed alto valore progettuale, funzionale ai comodi braccioli.





## OFFICE CHAIRS



**Upholstered executive armchair,  
high backrest, 5-star base, swivel,  
updown, fixed armrests**

**Poltrona direzionale imbottita,  
schienale alto, base a 5 razze,  
girevole, updown, braccioli fissi**

Sizes: W 715 x D 730 x  
H 1240/1330 mm  
S H 490/580 mm  
Code: IDE-A A



**Upholstered executive armchair,  
mid backrest, 5-star base, swivel,  
updown, fixed armrests**

**Poltrona semi-direzionale imbottita,  
schienale medio, base a 5 razze,  
girevole, updown, braccioli fissi**

Sizes: W 715 x D 720 x  
H 1120/1210 mm  
S H 490/580 mm  
Code: IDE-B A







The mark of  
responsible forestry

available FSC® certified on request  
disponibile certificato FSC® su richiesta



# — *Sabal*

Design by Pergentino Battocchio & Fiorenzo Dorigo  
2003

Sabal is a chair designed to furnish all the professional working areas, from the office to the meeting or waiting room. It combines both aesthetics and technical elements for a unique comfort and design.

Pensata per arredare l'ambiente professionale in tutte le sue aree, dall'ufficio alla meeting room o in sala d'attesa, Sabal è una sedia che unisce elementi efficaci, sia esteticamente che tecnicamente, per comfort e design unici.







## OFFICE CHAIRS



**Upholstered executive armchair,  
high backrest, 5-star base, swivel,  
updown, fixed armrests**

**Poltrona direzionale imbottita,  
schienale alto, base a 5 razze,  
girevole, updown, braccioli fissi**

Sizes: W 715 x D 730 x  
H 1190/1320 mm  
S H 490/620 mm  
Code: SAB-A S



**Upholstered executive armchair  
mid backrest, 5-star base, swivel,  
updown, fixed armrests**

**Poltrona semi-direzionale imbottita,  
schienale medio, base a 5 razze,  
girevole, updown, braccioli fissi**

Sizes: W 715 x D 730 x  
H 860/970 mm  
S H 490/620 mm  
Code: SAB-B S





The mark of  
responsible forestry

available FSC® certified on request  
disponibile certificato FSC® su richiesta

S<sup>®</sup>



# — *Tempo*

Design by Pergentino Battocchio  
2012

With its neat and refined aesthetics, Tempo is a chair suitable for all office environments, conference rooms and executive areas, able to transmit grace and spontaneous elegance.

Dall'estetica pulita e raffinata, Tempo è una sedia che si adatta a tutti gli ambienti dell'ufficio, sala conferenza, studio, aree direzionali, lasciando trasparire dalla sua linearità la volontà di creare un elemento d'arredo in grado di trasmettere grazia e spontanea eleganza.







## OFFICE CHAIRS



**Upholstered executive armchair, high backrest, 5-star base, swivel, updown**

**Poltrona direzionale imbottita, schienale alto, base a 5 razze, girevole, updown**

Sizes: W 715 x D 715 x  
H 1265/1400 mm  
S H 495/630 mm  
Code: TEMP A



**Upholstered executive armchair, mid backrest, 5-star base, swivel, updown**

**Poltrona semi-direzionale imbottita, schienale medio, base a 5 razze, girevole, updown**

Sizes: W 715 x D 715 x  
H 1005/1110 mm  
S H 495/630 mm  
Code: TEMPM A



**Upholstered executive armchair, low backrest, 5-star base, swivel, updown**

**Poltrona semi-direzionale imbottita, schienale basso, base a 5 razze, girevole, updown**

Sizes: W 715 x D 715 x  
H 925/1030 mm  
S H 445/550 mm  
Code: TEMPB A



**Upholstered executive armchair, low backrest, 4-star base, swivel, self return**

**Poltrona semi-direzionale imbottita, schienale basso, base a 4 razze, girevole, auto allineante**

Sizes: W 550 x D 550 x H 950 mm  
S H 505 mm  
Code: TEMPB B



**Upholstered visitor armchair, steel sled base**

**Poltrona visitatore imbottita, base a slitta in acciaio**

Sizes: W 555 x D 660 x H 930 mm  
S H 450 mm  
Code: TEMPV A/B







The mark of  
responsible forestry

available FSC® certified on request  
disponibile certificato FSC® su richiesta

S<sup>2</sup>





Hugó, Side, Tempo, Dapper







# — *Major*

Design by Fiorenzo Dorigo  
2005

A perfect combination between backrest and seat, which creates an unusual furnishing element but perfectly balanced.

The Major collection consists of totally customizable and adaptable chairs and stools, able to change aspect thanks to the varieties of the different elements available. The simple and comfortable design start off with chairs with graphic lines but at the same time soft. It is designed for contract and domestic environments.

Un incastro perfetto tra schienale e seduta, che genera un elemento d'arredo inconsueto e allo stesso tempo perfettamente bilanciato.

La collezione Major è costituita da sedie e sgabelli totalmente customizzabili, camaleontici e in grado di cambiare tono grazie ai diversi elementi su cui è possibile intervenire. Il design, semplice e comodo, dà vita a sedute dalle linee grafiche ma al contempo morbide. Pensata per il contract e per gli ambienti domestici.







## LOW BACKREST CHAIRS



Fully upholstered armchair or with wooden rear backrest, low backrest, 5-star base on castors, swivel, updown

Poltroncina completamente imbottita o con retro schienale in legno, schienale basso, base a 5 razze su ruote, girevole, updown

Sizes: W 715 x D 715 x H 710/840 mm  
S H 435/565 mm  
Code: MAJB\* Y



Fully upholstered armchair or with wooden rear backrest, low backrest, 4-star base, swivel, self return

Poltroncina completamente imbottita o con retro schienale in legno, schienale basso, base a 4 razze, girevole, auto allineante

Sizes: W 545 x D 700,5 x H 473 mm  
S H 473 mm  
Code: MAJB\* Z



Fully upholstered armchair or with wooden rear backrest, low backrest, 4-star base, swivel, self return

Poltroncina completamente imbottita o con retro schienale in legno, schienale basso, base a 4 razze, girevole, auto allineante

Sizes: W 545 x D 580 x H 730 mm  
S H 460 mm  
Code: MAJB\* X



Fully upholstered armchair or with wooden rear backrest, low backrest, 4 legged steel frame

Poltroncina completamente imbottita o con retro schienale in legno, schienale basso, telaio 4 gambe in acciaio

Sizes: W 545 x D 620 x H 640 mm  
S H 460 mm  
Code: MAJB\* B



Fully upholstered armchair or with wooden rear backrest, low backrest, 4 legged base, swivel

Poltroncina completamente imbottita o con retro schienale in legno, schienale basso, base 4 gambe, girevole

Sizes: W 545 x D 580 x H 728 mm  
S H 456 mm  
Code: MAJB\* D



Fully upholstered armchair or with wooden rear backrest, low backrest, pyramidal base in solid walnut canaletto or olive ash, swivel

Poltroncina completamente imbottita o con retro schienale in legno, schienale basso, base piramidale in massello di noce canaletto o frassino olivato, girevole

Sizes: W 545 x D 555 x H 760 mm  
S H 485 mm  
Code: MAJB\* W/U



**Fully upholstered armchair or with  
wooden rear backrest, low backrest,  
steel sled base**

**Poltroncina completamente imbottita  
o con retro schienale in legno,  
schienale basso, base a slitta in  
acciaio**

Sizes: W 545 x D 610 x H 710 mm  
S H 475 mm  
Code: MAJB\* A



The mark of  
responsible forestry

available FSC® certified on request  
disponibile certificato FSC® su richiesta









## HIGH BACKREST CHAIRS



Fully upholstered armchair or with wooden rear backrest, high backrest, 5-star base on castors, swivel, updown

Poltroncina completamente imbottita o con retro schienale in legno, schienale alto, base a 5 razze su ruote, girevole, updown

Sizes: W 715 x D 715 x H 860/990 mm  
S H 435/565 mm  
Code: MAJA\* Y



Fully upholstered armchair or with wooden rear backrest, high backrest, 4 legged base, swivel on castors

Poltroncina completamente imbottita o con retro schienale in legno, schienale alto, base 4 gambe, girevole su ruote

Sizes: W 545 x D 700,5 x H 885mm  
S H 470 mm  
Code: MAJA\* Z



Fully upholstered armchair or with wooden rear backrest, high backrest, 4-star base, swivel, self return

Poltroncina completamente imbottita o con retro schienale in legno, schienale alto, base a 4 razze, girevole, auto allineante

Sizes: W 545 x D 590 x H 870 mm  
S H 460 mm  
Code: MAJA\* X



Fully upholstered armchair or with wooden rear backrest, high backrest, 4 legged steel frame

Poltroncina completamente imbottita o con retro schienale in legno, schienale alto, telaio 4 gambe in acciaio

Sizes: W 545 x D 630 x H 850 mm  
S H 465 mm  
Code: MAJA\* B



Fully upholstered armchair or with wooden rear backrest, high backrest, 4 legged base, swivel

Poltroncina completamente imbottita o con retro schienale in legno, schienale alto, base 4 gambe, girevole

Sizes: W 545 x D 580 x H 890 mm  
S H 456 mm  
Code: MAJA\* D



Fully upholstered armchair or with wooden rear backrest, high backrest, pyramidal base in solid walnut canaletto or olive ash, swivel

Poltroncina completamente imbottita o con retro schienale in legno, schienale alto, base piramidale in massello di noce canaletto o frassino olivato, girevole

Sizes: W 545 x D 580 x H 933 mm  
S H 497 mm  
Code: MAJA\* W/U





**Fully upholstered armchair or  
with wooden rear backrest, high  
backrest, steel sled base**

Poltroncina completamente imbottita  
o con retro schienale in legno,  
schienale alto, base a slitta in  
acciaio

Sizes: W 545 x D 620 x H 850 mm  
S H 480 mm  
Code: MAJA\* A



**Fully upholstered armchair or  
with wooden rear backrest, high  
backrest, steel sled base, writing  
wooden tablet**

Poltroncina completamente imbottita  
o con retro schienale in legno,  
schienale alto, base a slitta in  
acciaio, tavoletta scrittorio in legno

Sizes: W 575 x D 620 x H 850 mm  
S H 480 mm  
Code: MAJA\* A



The mark of  
responsible forestry

available FSC® certified on request  
disponibile certificato FSC® su richiesta

# — *Swingo*

Design by CRS Sitia  
2022

A practical swinging stool, with an informal style, designed for residential or contract use. Swingo can fit a huge variety of applications in different environments, while maintaining an original nature. Thanks to its compactness it is also perfect for the corner of the house dedicated to home working.

Un pratico sgabello oscillante, dallo stile informale, pensato per uso residenziale o contract. Swingo è in grado di adattarsi alle più svariate applicazioni in diversi segmenti, pur mantenendo un carattere originale. Grazie alla sua compattezza è anche perfetto per un angolo di casa dedicato all'home working.







## STOOLS



**Dynamic stool with tilt seating,  
height-adjustable and swivel seat**

**Sgabello dinamico con seduta  
oscillante, regolabile in altezza e  
girevole**

Sizes: Ø 400 X SH 598/860  
Code: SWT





The mark of  
responsible forestry

available FSC® certified on request  
disponibile certificato FSC® su richiesta

s<sup>2</sup>



Side, Swingo, Tondo

# *1 — About Sitia*

The human contract:  
Sitia produces extremely  
adaptable and customizable  
furniture, perfect for contract  
and domestic spaces.  
Starting from catalog products  
- to which new finishes,  
fabrics and colors have been  
added - the brand produces  
complements for sophisticated  
bespoke projects according  
to the requests of the partners.

The human contract:  
Sitia produce arredi estremamente versatili  
e customizzabili, perfetti per gli spazi contract  
e domestici. Partendo dai prodotti disponibili  
a catalogo - al quale sono state aggiunte nuove  
finiture, tessuti e colori - il brand produce  
complementi che sfociano in sofisticati progetti  
bespoke, secondo le richieste dei partners.





**SITIA, a specialized brand in the creation of seats and accessories for domestic and contract spaces, is solely dedicated to design and quality made in Italy. The company is nowadays inspired by the creative concept of ‘the human contract’: furniture that is able to create a comfortable environment, with a domestic atmosphere, even if they are placed in professional and work environments. In response to the contemporary evolution of interiors, Sitia has also dedicated a branch of the company to the production of products, to provide customers and architects with endless possibilities of customization: each product is fully customizable, even if in small quantities. Since 2015 the creative direction of the brand has been entrusted to the creative consultancy agency of MM Company.**

SITIA, brand specializzato nella creazione di sedute e complementi per gli spazi domestici e contract, è fortemente vocato al design e alla qualità made in Italy. L'azienda è oggi ispirata al concept creativo “the human contract”: degli arredi capaci di ricreare un ambiente confortevole, dall'atmosfera domestica, anche se collocati in ambienti professionali e di lavoro. In risposta all'evoluzione contemporanea degli interiors, Sitia ha anche dedicato un ramo d'azienda alle produzioni sartoriali, per fornire ai clienti e architetti infinite possibilità di personalizzazione: ogni prodotto è interamente customizzabile, anche se in piccole quantità. Dal 2015 la direzione creativa del brand è affidata all'agenzia di consulenza creativa MM Company.









## 2 — *Focus:* *home office*

### the ‘human contract’ enters your home

lo ‘human contract’ entra in casa tua

Domestic spaces dedicated to work and learning, in a “human” style. Sitia fits people’s needs, creating a series of furnishings that blend together to organize a comfortable work environment at home with a modern, elegant and multifunctional design. Environments used as home offices which, thanks to systems that interact flexibly with each other to create light and functional areas, perfect for the needs of contemporary living.

Spazi domestici dedicati al lavoro e all’apprendimento, in stile “human”. Sitia si adatta alle esigenze delle persone dando vita ad una serie di arredi che interagiscono per organizzare in casa un ambiente di lavoro confortevole e dal design moderno, elegante e multifunzionale. Ambienti adibiti a studi domestici che, grazie a sistemi che dialogano tra loro in modo flessibile, creano aree leggere e funzionali, perfette per le esigenze dell’abitare contemporaneo.













## *3 — Tailor made in Italy*

From initial conception  
to production, Sitia  
makes entirely  
handmade products,  
made in Italy.

Dall'ideazione fino alla realizzazione, Sitia  
produce ogni articolo a mano e in Italia.



Guided by “maestro” Pergentino Battocchio, who boasts more than 50 years experience in the production of chairs, Sitia has an internal production laboratory that allows total customization in its creations, changing fabrics, sizes, materials and finishes.

Guidata dal maestro Pergentino Battocchio, che vanta un'esperienza di oltre 50 anni nella produzione di sedute, l'azienda ha un laboratorio produttivo interno, che gli permette di customizzare totalmente le proprie realizzazioni cambiando tessuti, dimensioni, materiali e finiture.

‘  
*Each product  
can be personalized*  
,

Technological innovation, technical skills, quality and a strong sense of aesthetics affirm the authenticity of Sitia creations which act as an ambassador of Italian design in the world, a design characterized by all internationally recognized features.

Innovazione tecnologica, abilità tecnica, qualità dei materiali e forte senso estetico, affermano l'autenticità delle creazioni Sitia che fa da ambasciatrice nel mondo del design italiano, portando con sé tutte queste caratteristiche internazionalmente riconosciute.











## *4 — Projects: Sitia for you*

Deep sartorial knowledge, avant-garde technologies, certified methodologies and innovative structural research make Sitia a brand in harmony with architectural studios and interior designers from all over the world.

La profonda conoscenza sartoriale, le tecnologie d'avanguardia utilizzate, le metodologie certificate e le innovative ricerche strutturali, fanno di Sitia un brand in sintonia con le esigenze degli studi di architettura e arredatori di tutto il mondo.



**An available and reliable partner that senses their needs and turn them into real products for contract environments, offices, hotels, restaurants and public or residential spaces. Sitia is a partner of designers, indeed operates an internal interior design team that studies in project details to find out customized solutions even from a technical point of view.**

Un partner disponibile e affidabile che capta le loro necessità, trasformandole in prodotti veri e propri per gli ambienti contract, uffici, hotelierie, ristoranti e spazi pubblici o residenziali. Partner dei progettisti, Sitia si avvale infatti di un design team interno che studia nel dettaglio i progetti per trovare soluzioni customizzate, anche dal punto di vista tecnico.



Tempo



Chantal

**This allows customers to ask for changes on standard collection items or to evaluate together with Sitia's design team the creation of tailor-made articles.**

Questo permette ai clienti di richiedere modifiche agli arredi presenti a catalogo, o valutare assieme all'azienda la creazione di articoli completamente su misura















Black or White













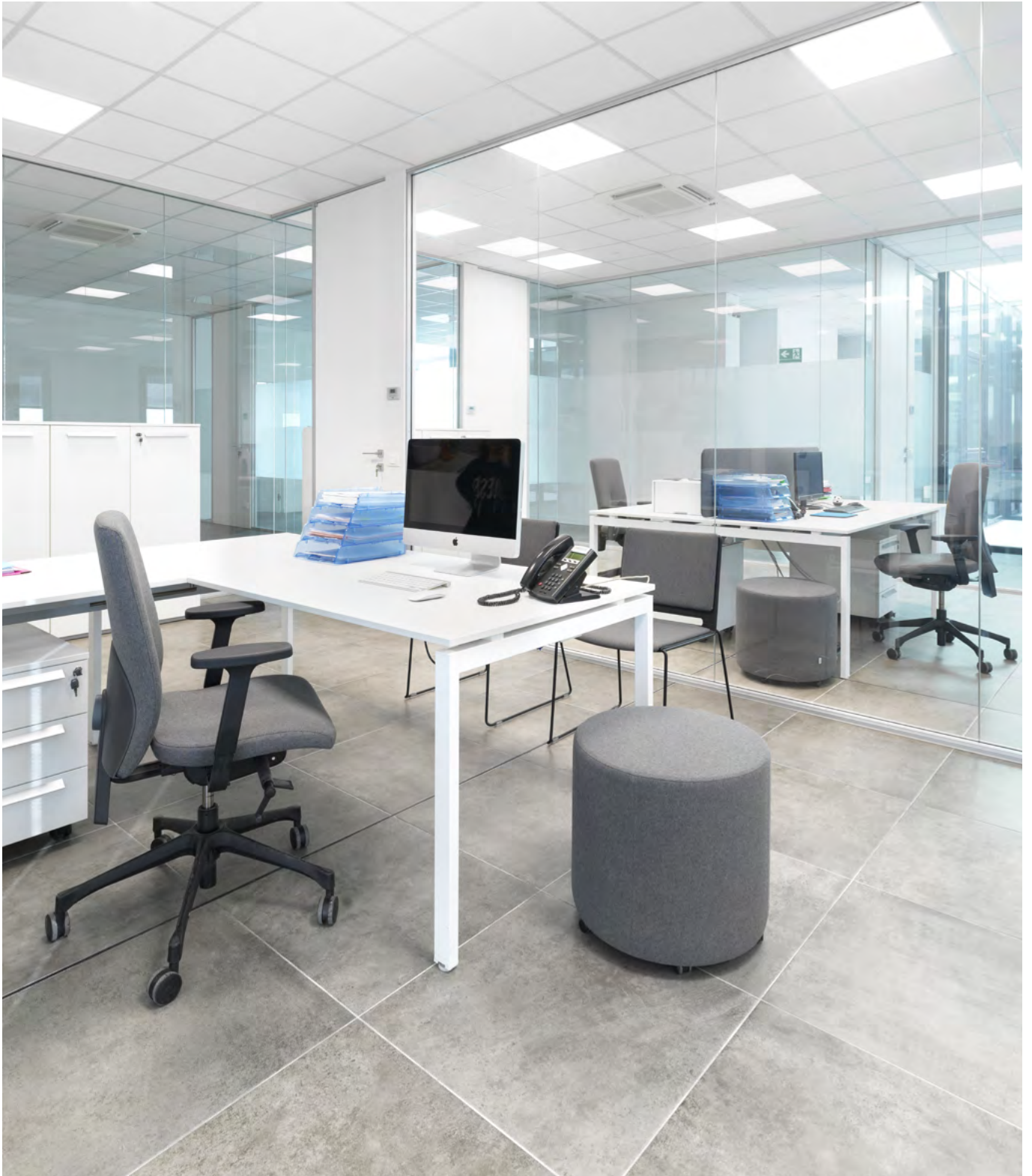




Pergy









Darwin







Major















Eclipse

















Chantal, Darwin









Chantal, Eclipse





materiali  
& finiture



— *materials*  
& *finishings*

Jet by Fidivi  
Made in Italy

**Composition**

100% polyester (Trevira Cs)

**Length**

1,40 m

**Weight**

260 gr/m<sup>2</sup> ±5%

**Abrasion test-Martindale**

UNI EN ISO 12947-2 - 65.000 rubs ±10%

**Pilling - Martindale Method**

ISO 12945-2 degree 4-5, 5

**Rubbing Fastness - Humid**

EN ISO 105X12 4/5 ± ½

**Xenotest**

EN ISO 105 B02 degree 5-8, 6

**Colour fastness to rubbing**

EN ISO 105-X12 degree 4-5, 4/5

**Fire resistance**

UNI 9174 - 8456 Class C1

UNI 9175 Class 1 IM

DIN 4102 Class B1

NF 92501-7 Class M1

NF D 60013 Class AM18

EN 1021-1 & 2

BS Crib 5

BS 7176 Class Medium Hazard

EN 13773 Class 1

OENORM 3800-1 Class B1,Q1,TR1

California TB117

USA NFPA 701

USA NFPA 260

IMO Part 8 Upholstery

**Cleaning and maintenance**

Vacuum regularly.

Wipe clean with a damp cloth.

Jet by Fidivi  
Made in Italy

**Composizione**

100% poliestere (Trevira Cs)

**Altezza**

1,40 m

**Peso**

260 gr/m<sup>2</sup> ±5%

**Resistenza all'abrasione Martindale**

UNI EN ISO 12947-2 - 65.000 cicli ±10%

**Pilling - Metodo Martindale**

ISO 12945-2 grado 4-5, 5

**Resistenza allo sfregamento a umido**

EN ISO 105X12 4/5 ± ½

**Solidità del colore alla luce artificiale**

EN ISO 105 B02 grado 5-8, 6

**Solidità del colore allo sfregamento**

EN ISO 105-X12 grado 4-5, 4/5

**Resistenza al fuoco**

UNI 9174 - 8456 Class C1

UNI 9175 Class 1 IM

DIN 4102 Class B1

NF 92501-7 Class M1

NF D 60013 Class AM18

EN 1021-1 & 2

BS Crib 5

BS 7176 Class Medium Hazard

EN 13773 Class 1

OENORM 3800-1 Class B1,Q1,TR1

California TB117

USA NFPA 701

USA NFPA 260

IMO Part 8 Upholstery

**Pulizia e manutenzione**

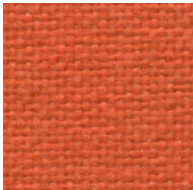
Aspirare regolarmente.

Pulire con un panno umido.





Categoria B7



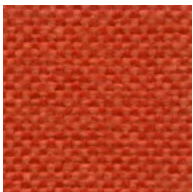
B7 051



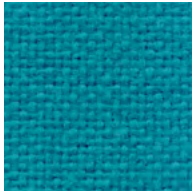
B7 110



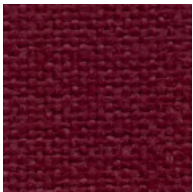
B7 100



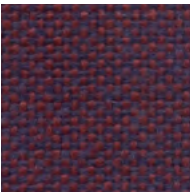
B7 403



B7 091



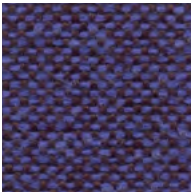
B7 017



B7 501



B7 007



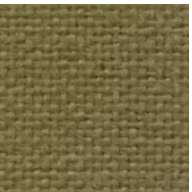
B7 606



B7 001



B7 806



B7 034



B7 703

Slight differences between dyeing lots have to be considered normal

Roccia by Fidivi  
Made in Italy

**Composition**

100% polyester (Trevira Cs)

**Length**

1,40 m

**Weight**

250 gr/m<sup>2</sup> ±5%

**Pilling – Martindale**

ISO 12945-2 degree 4-5, 5

**Abrasion resistance – Martindale**

UNI EN ISO 12947-2 - 70.000 rubs ±10%

**Xenotest**

EN ISO 105 B02 degree 5-8, 6

**Colour fastness to rubbing**

EN ISO 105-X12 degree 4-5, 4/5

**Fire resistance**

UNI 9174 - 8456 Class C1

UNI 9175 Class 1 IM

DIN 4102 Class B1

NF 92501-7 Class M1

NF D 60013 Class AM18

EN 1021-1 & 2

BS Crib 5

BS 7176 Class Medium Hazard

EN 13773 Class 1

OENORM 3800-1 Class B1,Q1,TR1

California TB117

USA NFPA 701

USA NFPA 260

IMO Part 8 Upholstery

**Cleaning and maintenance**

Vacuum regularly.

Wipe clean with a damp cloth.

Roccia by Fidivi  
Made in Italy

**Composizione**

100% poliestere (Trevira Cs)

**Altezza**

1,40 m

**Peso**

250 gr/m<sup>2</sup> ±5%

**Pilling – Metodo Martindale**

ISO 12945-2 grado 4-5, 5

**Resistenza all'abrasione – Martindale**

UNI EN ISO 12947-2 - 70.000 cicli ±10%

**Solidità del colore alla luce artificiale**

EN ISO 105 B02 grado 5-8, 6

**Solidità del colore allo sfregamento**

EN ISO 105-X12 grado 4-5, 4/5

**Resistenza al fuoco**

UNI 9174 - 8456 Class C1

UNI 9175 Class 1 IM

DIN 4102 Class B1

NF 92501-7 Class M1

NF D 60013 Class AM18

EN 1021-1 & 2

BS Crib 5

BS 7176 Class Medium Hazard

EN 13773 Class 1

OENORM 3800-1 Class B1,Q1,TR1

California TB117

USA NFPA 701

USA NFPA 260

IMO Part 8 Upholstery

**Pulizia e manutenzione**

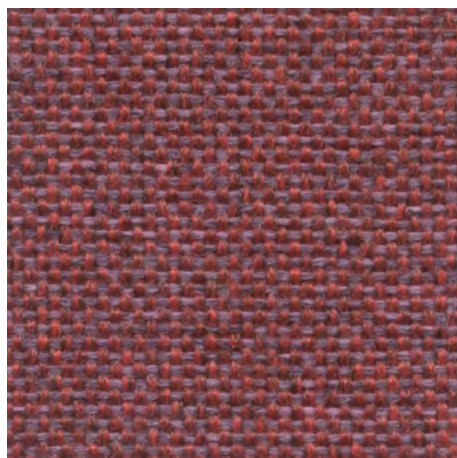
Aspirare regolarmente.

Pulire con un panno umido.





Categoria B8



B8 455



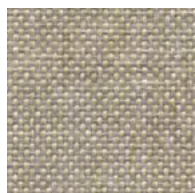
B8 657



B8 854



B8 151



B8 152



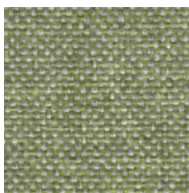
B8 555



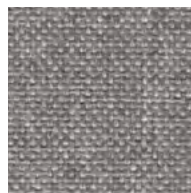
B8 656



B8 352



B8 754



B8 851



B8 251

Ganesha by Abitex  
Made in Italy

**Composition**

65% polyurethane - 29% polyester - 6% cotton

**Length**

1,40 m

**Width**

30 m

**Weight**

550 gr/m<sup>2</sup>

**Abrasion resistance – Martindale**

ISO 5470-2 - 100.000 rubs

**Xenotest**

ISO 105 B02 degree 6-7

**Colour fastness to rubbing**

ISO 106/7 X12 dry 5, wet 5

**Fire resistance**

UNI 9175 Class 1 IM

EN 1021-1 & 2

BS 5852 part 1

BS 5852 crib 5

NF D 60 013

California TB 117-2013

IMO FTP Code 307 part 8

**Cleaning and maintenance**

Dust gently and, in case of light stains, pass the surface with a damp cloth or neutral detergent, rinse with water without squeezing.

Ganesha by Abitex  
Made in Italy

**Composizione**

65% poliuretano - 29% poliestere - 6% cotone

**Altezza**

1,40 m

**Lunghezza**

30 m

**Peso**

550 gr/m<sup>2</sup>

**Resistenza all'abrasione – Martindale**

ISO 5470-2 - 100.000 cicli

**Solidità del colore alla luce artificiale**

ISO 105 B02 grado 6-7

**Solidità del colore allo sfregamento**

ISO 106/7 X12 secco 5, umido 5

**Resistenza al fuoco**

UNI 9175 Class 1 IM

EN 1021-1 & 2

BS 5852 part 1

BS 5852 crib 5

NF D 60 013

California TB 117-2013

IMO FTP Code 307 part 8

**Pulizia e manutenzione**

Spolverare delicatamente e in caso di macchie lievi passare la superficie con panno umido o con soluzione di detergente neutro, risciacquando senza strizzare.





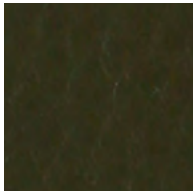
Categoria C2



C2 103



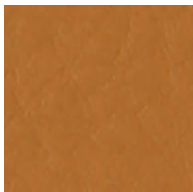
C2 602



C2 803



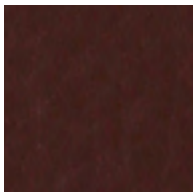
C2 306



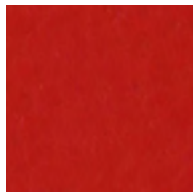
C2 404



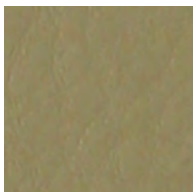
C2 503



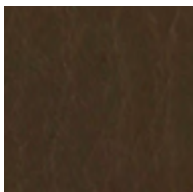
C2 313



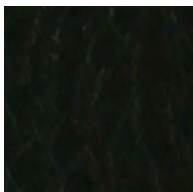
C2 315



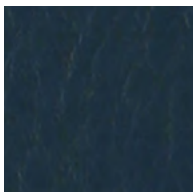
C2 406



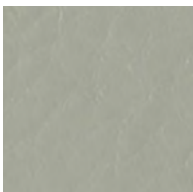
C2 408



C2 200



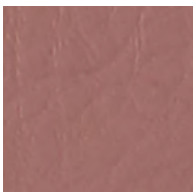
C2 705



C2 600



C2 804



C2 903

Slight differences between dyeing lots have to be considered normal

Aida by Novatex  
Made in Italy

**Composition**

60% polyester - 30% acrylic - 10% cotton

**Length**

1,40 m

**Weight**

490 gr/m<sup>2</sup> ±5%

**Pilling – Martindale**

≥ 4/5

**Abrasion resistance – Martindale**

≥ 50.000 rubs

**Tensile strenght – Warp**

N 865 ±5%

Elongation 28,9% ±1,44%

**Tensile strenght – Weft**

N 397 ±5%

Elongation 32,1% ±1,6%

**Xenotest**

≥ 4/5

**Colour fastness to rubbing**

≥ 4

**Colour fastness to cleaning**

≥ 4

**Fire resistance**

UNI9175 Class 1 IM

BS 5852 cigarette/match

EN 1021 part 1&2

**Cleaning and maintenance**

Vacuum regularly.

Wipe clean with a damp cloth.

Aida by Novatex  
Made in Italy

**Composizione**

60% poliestere - 30% acrilico - 10% cotone

**Altezza**

1,40 m

**Peso**

490 gr/m<sup>2</sup> ±5%

**Pilling – Metodo Martindale**

≥ 4/5

**Resistenza all'abrasione – Martindale**

≥ 50.000 cicli

**Resistenza alla trazione nel verso dell'ordito**

N 865 ±5%

Allungamento 28,9% ±1,44%

**Resistenza alla trazione nel verso della trama**

N 397 ±5%

Allungamento 32,1% ±1,6%

**Solidità del colore alla luce artificiale**

≥ 4/5

**Solidità del colore allo sfregamento**

≥ 4

**Solidità del colore al lavaggio**

≥ 4

**Resistenza al fuoco**

UNI9175 Classe 1 IM

BS 5852 cigarette/match

EN 1021 part 1&2

**Pulizia e manutenzione**

Aspirare regolarmente.

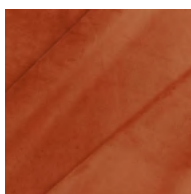
Pulire con un panno umido.



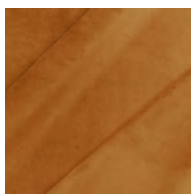
Categoria C3



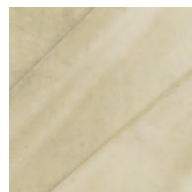
C3 011



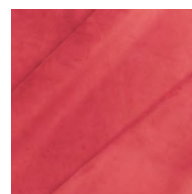
C3 015



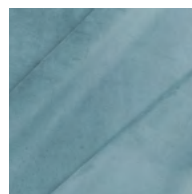
C3 040



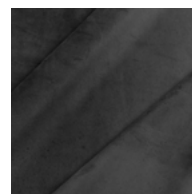
C3 051



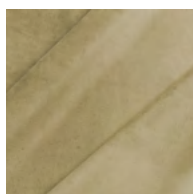
C3 056



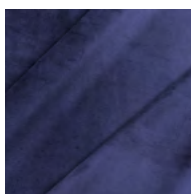
C3 055



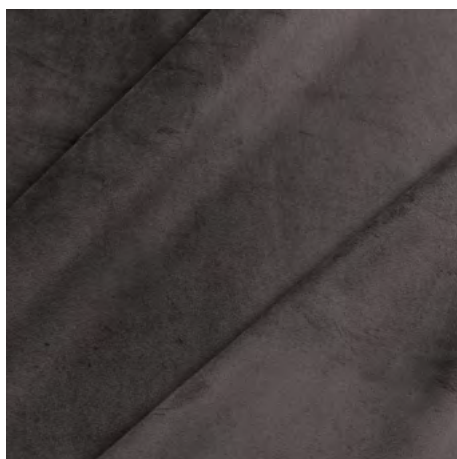
C3 032



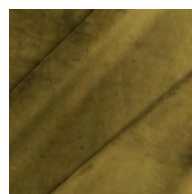
C3 041



C3 029



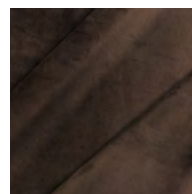
C3 005



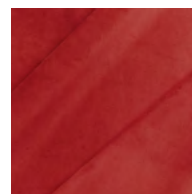
C3 039



C3 057



C3 010



C3 030

Aida Quilted Tweed by Novatex  
Made in Italy

**Composition**

70% polyester – 30% polyurethane

**Length**

1,40 m

**Weight**

610 gr/m<sup>2</sup> ±5%

**Pilling – Martindale**

≥ 4/5

**Abrasion resistance – Martindale**

≥ 25.000 rubs

**Tensile strenght – Warp**

N 650 ±5%

Elongation 33,8% ±1,69%

**Tensile strenght – Weft**

N 880 ±5%

Elongation 25,5% ±1,27%

**Xenotest**

≥ 4/5

**Colour fastness to rubbing**

≥ 4/5

**Colour fastness to cleaning**

≥ 4

**Cleaning and maintenance**

Vacuum regularly.

Wipe clean with a damp cloth.

Aida Quilted Tweed by Novatex  
Made in Italy

**Composizione**

70% poliestere – 30% poliuretano

**Altezza**

1,40 m

**Peso**

610 gr/m<sup>2</sup> ±5%

**Pilling – Metodo Martindale**

≥ 4/5

**Resistenza all'abrasione – Martindale**

≥ 25.000 cicli

**Resistenza alla trazione nel verso dell'ordito**

N 650 ±5%

Allungamento 33,8% ±1,69%

**Resistenza alla trazione nel verso della trama**

N 880 ±5%

Allungamento 25,5% ±1,27%

**Solidità del colore alla luce artificiale**

≥ 4/5

**Solidità del colore allo sfregamento**

≥ 4/5

**Solidità del colore al lavaggio**

≥ 4

**Pulizia e manutenzione**

Aspirare regolarmente.

Pulire con un panno umido.



Categoria C4



C4 Q51



C4 Q11



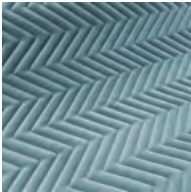
C4 Q15



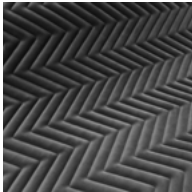
C4 Q56



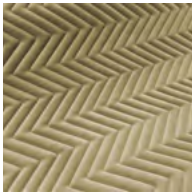
C4 Q40



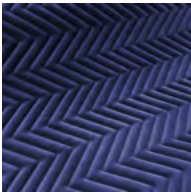
C4 Q55



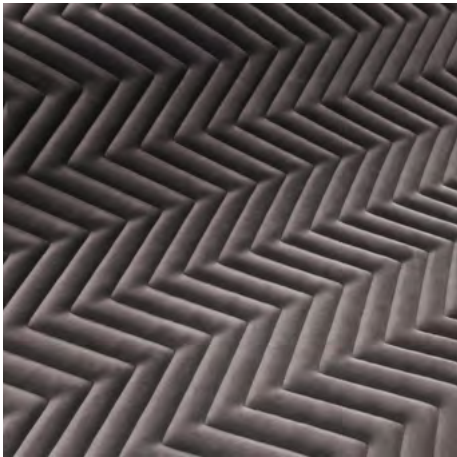
C4 Q32



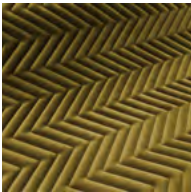
C4 Q41



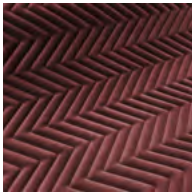
C4 Q29



C4 Q05



C4 Q39



C4 Q57



C4 Q10



C4 Q30

Slight differences between dyeing lots have to be considered normal

Era by Camira  
Made in United Kingdom

**Composition**

100% polyester

**Length**

1,40 m

**Weight**

320 gr/m<sup>2</sup> ±5%

**Abrasion resistance – Martindale**

≥ 100.000 rubs

**Xenotest**

5 (ISO 105 - B02)

**Colour fastness to dry rubbing**

ISO 105 - X12, 4

**Colour fastness to wet rubbing**

ISO 105 - X12, 4

**Fire resistance**

EN 1021 - 1 (cigarette)

EN 1021 - 2 (match)

BS 7176 Low Hazard

EN 13501 - 1 Adhered Class B, s1, d0

EN 13501 - 1 Un-adhered Class C, s1, d0

BS 5852 Ignition source 5 with EnviroFlam5  
(over CMHR 50kg/m<sup>3</sup> foam)

BS 7176 Medium Hazard with EnviroFlam5  
(over CMHR 50kg/m<sup>3</sup> foam)

**Certifications**

certified to oeko-tex® standard 100

**Cleaning and maintenance**

Washable to 60 ° C.

Vacuum regularly.

Wipe with a damp cloth using soap and water  
or use proprietary upholstery shampoo. For  
deeper cleaning use steam, bleach, alcohol or  
professionally dry clean.

Era by Camira  
Made in United Kingdom

**Composizione**

100% poliestere

**Altezza**

1,40 m

**Peso**

320 gr/m<sup>2</sup> ±5%

**Resistenza all'abrasione – Martindale**

≥ 100.000 cicli

**Solidità del colore alla luce artificiale**

5 (ISO 105 - B02)

**Solidità del colore allo sfregamento a secco**

ISO 105 - X12, 4

**Solidità del colore allo sfregamento a umido**

ISO 105 - X12, 4

**Resistenza al fuoco**

EN 1021 - 1 (cigarette)

EN 1021 - 2 (match)

BS 7176 Low Hazard

EN 13501 - 1 Adhered Class B, s1, d0

EN 13501 - 1 Un-adhered Class C, s1, d0

BS 5852 Ignition source 5 with EnviroFlam5  
(over CMHR 50kg/m<sup>3</sup> foam)

BS 7176 Medium Hazard with EnviroFlam5  
(over CMHR 50kg/m<sup>3</sup> foam)

**Certificati**

certificato oeko-tex® standard 100

**Pulizia e manutenzione**

Lavabile a 60 ° C.

Aspirare regolarmente.

Pulire con un panno umido usando acqua e  
sapone o un detergente adatto a rivestimenti.  
Per una pulizia più profonda utilizzare vapore,  
candeggina, alcool o un lavaggio a secco  
professionale.

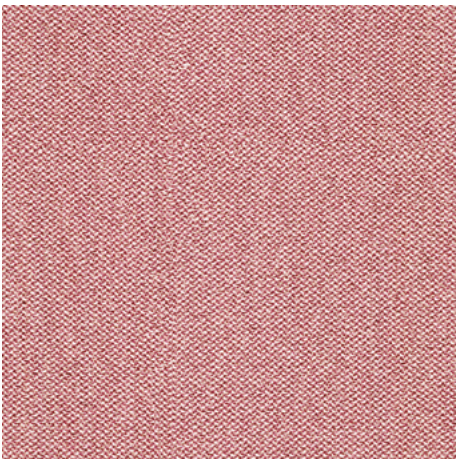




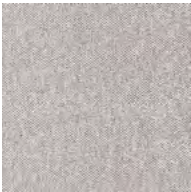
Categoria C5



C5 006



C5 024



C5 046



C5 032



C5 021



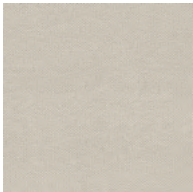
C5 002



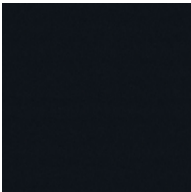
C5 027



C5 016



C5 001



C5 014



C5 013



C5 040

Slight differences between dyeing lots have to be considered normal

Aspect by Camira  
Made in United Kingdom

**Composition**

75% trevira® cs flame retardant polyester, 25% polyester - non metallic dyestuffs

**Length**

1,40 m

**Weight**

325 gr/m<sup>2</sup> ±5%

**Abrasion resistance – Martindale**

≥ 50.000 rubs

**Xenotest**

5 (ISO 105 - B02)

**Colour fastness to dry rubbing**

ISO 105 - X12, 4

**Colour fastness to wet rubbing**

ISO 105 - X12, 4

**Fire resistance**

EN 1021 - 1 (cigarette)

EN 1021 - 2 (match)

BS 7176 Low Hazard

BS 5852 Ignition source 5  
(over CMHR 50kg/m<sup>3</sup> foam)

BS 7176 Medium Hazard  
(over CMHR 50kg/m<sup>3</sup> foam)

DIN 4102 B1 NF D 60-013  
(over CMHR 50kg/m<sup>3</sup> foam)

ÖNORM B 3825 & A 3800-1  
(over CMHR 58kg/m<sup>3</sup> foam)

UNI 9175 Classe 1 IM

**Certifications**

certified to oeko-tex® standard 100

**Cleaning and maintenance**

Washable to 60 ° C.

Vacuum regularly.

Wipe clean with a damp cloth or upholstery detergent.

Aspect by Camira  
Made in United Kingdom

**Composizione**

75% trevira® cs poliestere ignifugo, 25% poliestere – senza coloranti metallici

**Altezza**

1,40 m

**Peso**

325 gr/m<sup>2</sup> ±5%

**Resistenza all'abrasione – Martindale**

≥ 50.000 cicli

**Solidità del colore alla luce artificiale**

5 (ISO 105 - B02)

**Solidità del colore allo sfregamento a secco**

ISO 105 - X12, 4

**Solidità del colore allo sfregamento a umido**

ISO 105 - X12, 4

**Resistenza al fuoco**

EN 1021 - 1 (cigarette)

EN 1021 - 2 (match)

BS 7176 Low Hazard

BS 5852 Ignition source 5  
(over CMHR 50kg/m<sup>3</sup> foam)

BS 7176 Medium Hazard  
(over CMHR 50kg/m<sup>3</sup> foam)

DIN 4102 B1 NF D 60-013  
(over CMHR 50kg/m<sup>3</sup> foam)

ÖNORM B 3825 & A 3800-1  
(over CMHR 58kg/m<sup>3</sup> foam)

UNI 9175 Classe 1 IM

**Certificati**

certificato oeko-tex® standard 100

**Pulizia e manutenzione**

Lavabile a 60 ° C.

Aspirare regolarmente.

Pulire con un panno umido o detergente adatto a rivestimenti.

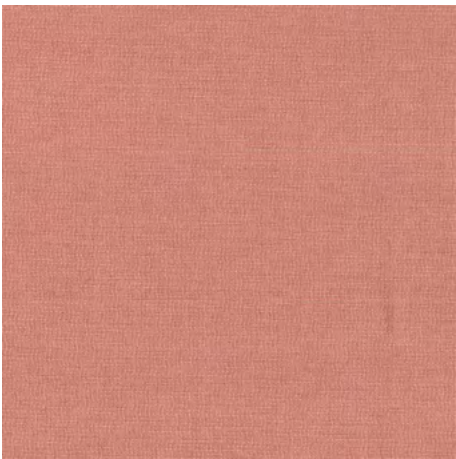




Categoria D3



D3 004



D3 007



D3 005



D3 001



D3 020



D3 025



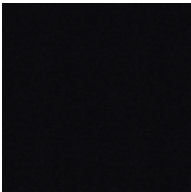
D3 002



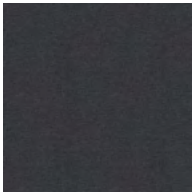
D3 015



D3 018



D3 031



D3 030



D3 024

Slight differences between dyeing lots have to be considered normal

Extrema Au Ikon by Flukso  
Made in Italy

**Composition**

63% polyurethane – 29% cotton – 8% PES

**Width**

140 cm

**Weight**

480 gr/m<sup>2</sup>

**Abrasion resistance**

UNI EN ISO 12947-2

150.000 rubs

**Xenotest**

UNI EN ISO 105-B02

5/6 blue scale

**Colour fastness to sweat**

UNI EN ISO 105-E04

4/5 grey scale

**Bending strenght**

UNI 4818-13

150.000 rubs

**Tensile strenght**

UNI EN ISO 1421

N/50mm

450 long. - 400 transv.

**Elongation at break**

UNI EN ISO 1421

10% long. - 20% transv.

**Tear strenght**

UNI EN ISO 9073-4

N 35 long. - N 35 transv.

**Fire resistance**

BS 5852 CRIB 5

BS 5852-1 PART I

IMO RESOLUTION A.652 (16) :1989

EN 1021-1

EN 1021-2

UNI 9175 CLASS 1IM

TB 117 : 2013

**Cleaning and maintenance**

Dust gently and, in case of light stains, pass the surface with a damp cloth or neutral detergent, rinse with water without squeezing.

Extrema Au Ikon by Flukso  
Made in Italy

**Composizione**

63% poliuretano – 29% cotone – 8% PES

**Altezza**

140 cm

**Peso**

480 gr/m<sup>2</sup>

**Resistenza all'abrasione**

UNI EN ISO 12947-2

150.000 cicli

**Solidità del colore alla luce artificiale**

UNI EN ISO 105-B02

5/6 scala dei blu

**Solidità del colore al sudore**

UNI EN ISO 105-E04

4/5 scala dei grigi

**Resistenza alle flessioni**

UNI 4818-13

150.000 cicli

**Resistenza alla trazione**

UNI EN ISO 1421

N/50mm

450 long. - 400 trasv.

**Allungamento alla rottura**

UNI EN ISO 1421

10% long. - 20% trasv.

**Resistenza alla lacerazione**

UNI EN ISO 9073-4

N 35 long. - N 35 trasv.

**Resistenza al fuoco**

BS 5852 CRIB 5

BS 5852-1 PARTE I

IMO RESOLUTION A.652 (16) :1989

EN 1021-1

EN 1021-2

UNI 9175 CLASSE 1IM

TB 117 : 2013

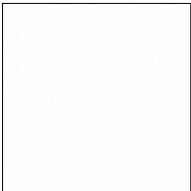
**Pulizia e manutenzione**

Spolverare delicatamente e in caso di macchie lievi passare la superficie con panno umido o con soluzione di detergente neutro, risciacquando senza strizzare.

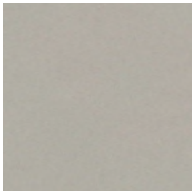




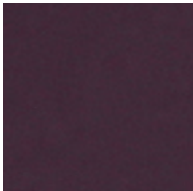
Categoria L6



L6 130



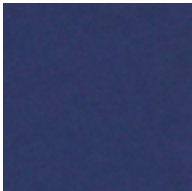
L6 243



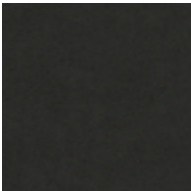
L6 830



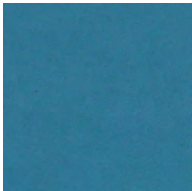
L6 930



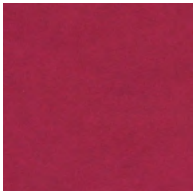
L6 203



L6 223



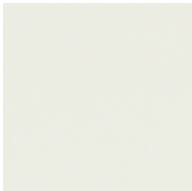
L6 183



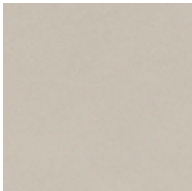
L6 133



L6 173



L6 230



L6 330



L6 530

Slight differences between dyeing lots have to be considered normal

Blazer by Camira  
Made in United Kingdom

**Composition**

100% virgin wool - non metallic dyestuffs

**Length**

1,40 m

**Weight**

460 gr/m<sup>2</sup> ±5%

**Abrasion resistance – Martindale**

≥ 50.000 rubs

**Xenotest**

5 (ISO 105 - B02)

**Colour fastness to dry rubbing**

ISO 105 - X12, 4

**Colour fastness to wet rubbing**

ISO 105 - X12, 4

**Fire resistance**

EN 1021 - 1 (cigarette)

EN 1021 - 2 (match)

BS 7176 Low Hazard

NF D 60-013

ÖNORM B 3825 & A 3800-1

(58kg/m<sup>3</sup> CMHR Foam)

UNI 9175 Classe 1 IM

BS 476 Part 7 Class 1

EN 13501-1 Adhered Class D, s1, d0

**Cleaning and maintenance**

Vacuum regularly.

Professionally dry clean or wipe clean with a damp cloth.

Blazer by Camira  
Made in United Kingdom

**Composizione**

100% lana vergine – senza coloranti metallici

**Altezza**

1,40 m

**Peso**

460 gr/m<sup>2</sup> ±5%

**Resistenza all'abrasione – Martindale**

≥ 50.000 cicli

**Solidità del colore alla luce artificiale**

5 (ISO 105 - B02)

**Solidità del colore allo sfregamento a secco**

ISO 105 - X12, 4

**Solidità del colore allo sfregamento a umido**

ISO 105 - X12, 4

**Resistenza al fuoco**

EN 1021 - 1 (cigarette)

EN 1021 - 2 (match)

BS 7176 Low Hazard

NF D 60-013

ÖNORM B 3825 & A 3800-1

(58kg/m<sup>3</sup> CMHR Foam)

UNI 9175 Classe 1 IM

BS 476 Part 7 Class 1

EN 13501-1 Adhered Class D, s1, d0

**Pulizia e manutenzione**

Aspirare regolarmente.

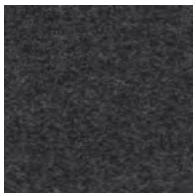
Lavare a secco professionalmente o pulire con un panno umido.



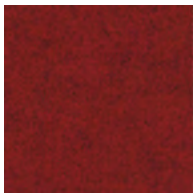
Categoria L7



L7 03B



L7 030



L7 063



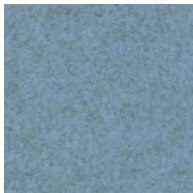
L7 03E



L7 02T



L7 086



L7 01R



L7 03D



L7 02R



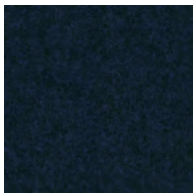
L7 028



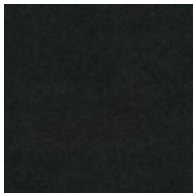
L7 033



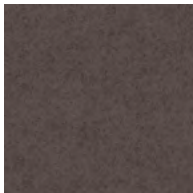
L7 01F



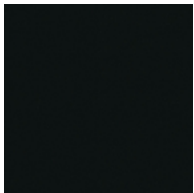
L7 062



L7 01M



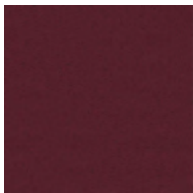
L7 031



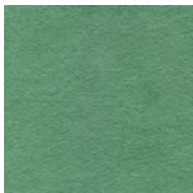
L7 008



L7 01E



L7 021



L7 02Y

Slight differences between dyeing lots have to be considered normal



Synergy Quilt Hourglass by Camira  
Made in United Kingdom

**Composition**

95% virgin wool, 5% polyamide with polyester and polyurethane foam backing

**Length**

1,65 m

**Weight**

700 gr/m<sup>2</sup> ±10%

**Pattern repeat**

stitch repeat 5 cm ±5%

**Abrasion resistance – Martindale**

≥ 100.000 rubs

**Xenotest**

5 (ISO 105 - B02)

**Colour fastness to dry rubbing**

ISO 105 - X12, 4

**Colour fastness to wet rubbing**

ISO 105 - X12, 4

**Fire resistance**

EN 1021 - 1 (cigarette)

EN 1021 - 2 (match)

BS 7176 Low Hazard

**Cleaning and maintenance**

Vacuum regularly.

Professionally dry clean or wipe clean with a damp cloth.

Synergy Quilt Hourglass by Camira  
Made in United Kingdom

**Composizione**

95% lana vergine, 5% poliammide con supporto in poliestere e poliuretano espanso

**Altezza**

1,65 m

**Peso**

700 gr/m<sup>2</sup> ±10%

**Ripetizione fantasia**

ripetizione cucitura 5 cm ±5%

**Resistenza all'abrasione – Martindale**

≥ 100.000 cicli

**Solidità del colore alla luce artificiale**

5 (ISO 105 - B02)

**Solidità del colore allo sfregamento a secco**

ISO 105 - X12, 4

**Solidità del colore allo sfregamento a umido**

ISO 105 - X12, 4

**Resistenza al fuoco**

EN 1021 - 1 (cigarette)

EN 1021 - 2 (match)

BS 7176 Low Hazard

**Pulizia e manutenzione**

Aspirare regolarmente.

Lavare a secco professionalmente o pulire con un panno umido.



Categoria L9



L9 Q08

Floyd by Kvadrat  
Made in Denmark

### Composition

50% polyester - 45% wool - 5% nylon

### Length

1,40 m

### Weight

370 gr/m

### Pilling – Martindale

EN ISO 12945

3/4

### Abrasion resistance – Martindale

EN ISO 12947

50.000 rubs

### Xenotest

ISO 105-B02

6/7

### Fire resistance

BS 5852 Crib 5 with treatment

BS 5852 part 1 with treatment

BS 5852 part 1, ig. s. 0

IMO FTP Code 2010 Part 8

US Cal. Bull. 117-2013

EN 1021-1/2

AS/NZS 3837, class 2

### Benefits of wool

The wool:

is a renewable resource

is very comfortable because of its ability to absorb

and give off humidity

is flame retardant

is biodegradable

is naturally soil resistant

ages with grace

### Environmental benefits

No use of AZO dyes

No use of dyes containing heavy metals/complies  
with ETAD norm

No use of brominated flame retardants

Complies with REACH

### Cleaning and maintenance

Vacuuming and dry cleaning.

Floyd by Kvadrat  
Made in Denmark

### Composizione

50% poliestere – 45% lana – 5% nylon

### Altezza

1,40 m

### Peso

370 gr/m

### Pilling – Metodo Martindale

EN ISO 12945

3/4

### Resistenza all'abrasione – Martindale

EN ISO 12947

50.000 cicli

### Solidità del colore alla luce artificiale

ISO 105-B02

6/7

### Resistenza al fuoco

BS 5852 Crib 5 with treatment

BS 5852 part 1 with treatment

BS 5852 part 1, ig. s. 0

IMO FTP Code 2010 Part 8

US Cal. Bull. 117-2013

EN 1021-1/2

AS/NZS 3837, class 2

### Benefici della lana

La lana:

è una risorsa rinnovabile

è molto confortevole grazie alla sua capacità

di assorbire e rilasciare l'umidità

è un ritardante di fiamma

è biodegradabile

è naturalmente resistente al suolo

si consuma gradualmente

### Benefici ambientali

Non prevede l'uso coloranti azoici

Non prevede l'uso di coloranti contenenti  
metalli pesanti/ risponde alla normativa ETAD

Non prevede l'uso di ritardanti di fiamma  
bromurati

Conforme a REACH

### Pulizia e manutenzione

Usare l'aspirapolvere e pulire a secco.





**Categoria M1**



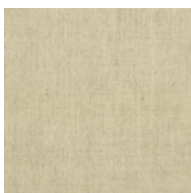
**M1 213**



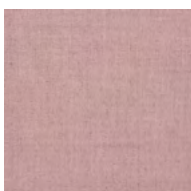
**M1 983**



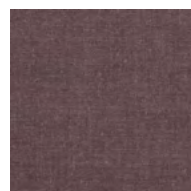
**M1 163**



**M1 223**



**M1 623**



**M1 693**



**M1 193**

Deans by Vescom  
Made in Netherlands

Deans by Vescom  
Made in Netherlands

**Composition**

100% polyester FR

**Length**

1,38 m

**Weight**

861 gr/m

**Pilling – Martindale**

ISO 12945-2 4 (scale 1–5)

ASTM D3511 3 (scale 1–5)

**Abrasion resistance – Martindale 12 KPA**

ISO 12947-2 110.000 rubs Martindale

ASTM D4157 100.000 double rubs wyzenbeek

**Xenotest**

ISO 105-B02 6-7 (scale 1–8)

AATCC 16.3: 40 hours 5 (scale 1–8)

**Colour fastness to dry rubbing**

ISO 105-X12 dry 4-5 (scale 1–5)

AATCC 8 dry 5 (scale 1–5)

**Colour fastness to wet rubbing**

ISO 105-X12 wet 4-5

AATCC 8 wet 5

**Seam slippage**

ISO 13936-2 warp 4.3 mm/ weft 3 mm

ASTM D4034 warp 39 lbf / weft 85 lbf

**Fire resistance**

EN 1021/ 1– 2

BS 5852, crib 5

NF P 92 / 503 – 507, M1

DIN 4102, B1

IMO 2010 FTP part 8

UNI 9175, classe 1

Cal TB 117

NFPA 260, class 1

**Composizione**

100% poliestere FR

**Altezza**

1,38 m

**Peso**

861 gr/m

**Pilling – Metodo Martindale**

ISO 12945-2 4 (scala 1–5)

ASTM D3511 3 (scala 1–5)

**Resistenza all'abrasione – Martindale 12 KPA**

ISO 12947-2 110.000 rubs Martindale

ASTM D4157 100.000 double rubs wyzenbeek

**Solidità del colore alla luce artificiale**

ISO 105-B02 6-7 (scala 1–8)

AATCC 16.3: 40 hours 5 (scala 1–8)

**Solidità del colore allo sfregamento a secco**

ISO 105-X12 asciutto 4-5 (scala 1–5)

AATCC 8 asciutto 5 (scala 1–5)

**Solidità del colore allo sfregamento a umido**

ISO 105-X12 umido 4-5

AATCC 8 umido 5

**Resistenza al taglio cucitura**

ISO 13936-2 catena 4.3 mm / trama 3 mm

ASTM D4034 catena 39 lbf / trama 85 lbf

**Resistenza al fuoco**

EN 1021/ 1– 2

BS 5852, crib 5

NF P 92 / 503 – 507, M1

DIN 4102, B1

IMO 2010 FTP part 8

UNI 9175, classe 1

Cal TB 117

NFPA 260, class 1

**Cleaning and maintenance**

Vacuum regularly.

Wipe clean with a damp cloth.

**Pulizia e manutenzione**

Aspirare regolarmente.

Pulire con un panno umido.



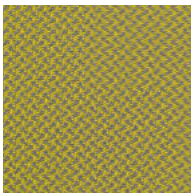
double face fabrics  
Categoria N2



N2 01M



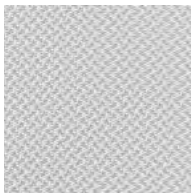
N2 01P



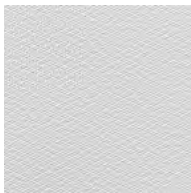
N2 05M



N2 05P



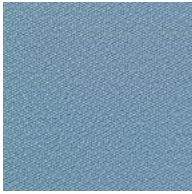
N2 09M



N2 09P



N2 10M



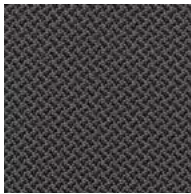
N2 10P



N2 11M



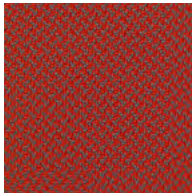
N2 11P



N2 12M



N2 12P



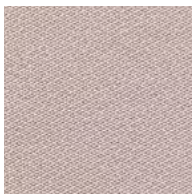
N2 13M



N2 13P



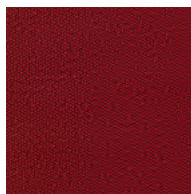
N2 14M



N2 14P



N2 15M



N2 15P

Slight differences between dyeing lots have to be considered normal



Leather by Futura Leathers  
Made in Italy

**Thickness**

ca. 0,90 mm

**Average size**

4,20 m<sup>2</sup>

**Raw material**

Bovine leather

**Colour fastness to rubbing**

Nr. 500 dry rubs

IUF 450 / UNI EN ISO 11640

≥ 4 grey scale

Nr. 150 wet rubs

IUF 450 / UNI EN ISO 11640

≥ 4 grey scale

Nr. 80 alkaline ph 8

IUF 450 / UNI EN ISO 11640

≥ 4 grey scale

**Flexing endurance**

IUP 20

UNI EN ISO 5402

≥30.000

**Tear strenght**

IUP 40

UNI EN ISO 3377-1

≥20N

**Adhesion**

IUF 470

UNI EN ISO 11644

≥3.50 N/cm

**Xenotest**

IUF 402

UNI EN ISO 105-B02

5 blue scale

**Fire resistance**

UNI EN ISO 1021-1/2

pass

BS 5852 1990 Sec. 4 NI/O-1

pass

California T.B. 117

pass

Leather complies with the strict regulations and EU Directives covering the use and presence of PCP, CFC, Chromo VI, Dimethylfumarate (DMF) and Azo dyestuffs during the tanning process

Leather by Futura Leathers  
Made in Italy

**Spessore**

ca. 0,90 mm

**Taglia media**

4,20 m<sup>2</sup>

**Materia prima**

Pelle bovina

**Solidità del colore allo sfregamento**

Nr. 500 battute a secco

IUF 450 / UNI EN ISO 11640

≥ 4 scala dei grigi

Nr. 150 battute a umido

IUF 450 / UNI EN ISO 11640

≥ 4 scala dei grigi

Nr. 80 battute al sudore ph 8

IUF 450 / UNI EN ISO 11640

≥ 4 scala dei grigi

**Flessometro**

IUP 20

UNI EN ISO 5402

≥30.000

**Resistenza alla trazione**

IUP 40

UNI EN ISO 3377-1

≥20N

**Adesione**

IUF 470

UNI EN ISO 11644

≥3.50 N/cm

**Solidità del colore alla luce artificiale**

IUF 402

UNI EN ISO 105-B02

5 scala dei blu

**Resistenza al fuoco**

UNI EN ISO 1021-1/2

positivo

BS 5852 1990 Sec. 4 NI/O-1

positivo

California T.B. 117

positivo

La pelle soddisfa le severe leggi e normative Europee riguardanti l'uso e la presenza di PCP, CFC, Cromo (VI), Dimethylfumarate (DMF) e Azocoloranti nel processo di concia



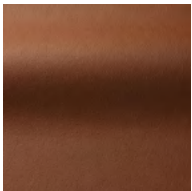
Categoria F1



F1 329



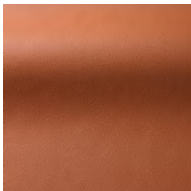
F1 316



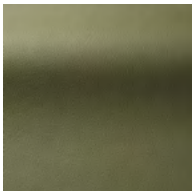
F1 165



F1 387



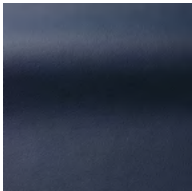
F1 305



F1 371



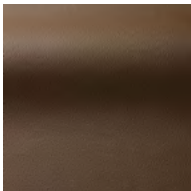
F1 332



F1 140



F1 360



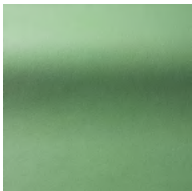
F1 340



F1 168



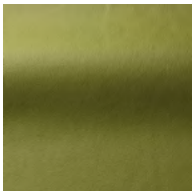
F1 611



F1 170



F1 171



F1 104

Slight differences between dyeing lots have to be considered normal

Extra Leather by Futura Leathers  
Made in Italy

**Thickness**

ca. 0,90 mm

**Average size**

4,20 m<sup>2</sup>

**Raw material**

Bovine leather from Australia/New Zealand/Europe

**Xenotest**

IUF 402

UNI EN ISO 105-B02

5 blue scale

**Colour fastness to rubbing**

Nr. 500 dry rubs

IUF 450 / UNI EN ISO 11640

≥ 4 grey scale

Nr. 150 wet rubs

IUF 450 / UNI EN ISO 11640

≥ 4 grey scale

Nr. 80 alkaline ph 8

IUF 450 / UNI EN ISO 11640

≥ 4 grey scale

**Flexing endurance**

IUP 20

UNI EN ISO 5402

≥ 30.000

**Tear strenght**

IUP 40

UNI EN ISO 3377-1

≥ 20N

**Adhesion**

IUF 470

UNI EN ISO 11644

≥ 3.50 N/cm

**Fire resistance**

UNI EN ISO 1021-1/2

pass

BS 5852 1990 Sec. 4 NI/O-1

pass

California T.B. 117

pass

Extra leather complies with the strict regulations and EU Directives covering the use and presence of PCP, CFC, Chromo VI, Dimethylfumarate (DMF) and Azo dyestuffs during the tanning process

Extra Leather by Futura Leathers  
Made in Italy

**Spessore**

ca. 0,90 mm

**Taglia media**

4,20 m<sup>2</sup>

**Materia prima**

Pelle bovina da Australia/Nuova Zelanda/Europa

**Solidità del colore alla luce artificiale**

IUF 402

UNI EN ISO 105-B02

5 scala dei blu

**Solidità del colore allo sfregamento**

Nr. 500 battute a secco

IUF 450 / UNI EN ISO 11640

≥ 4 scala dei grigi

Nr. 150 battute a umido

IUF 450 / UNI EN ISO 11640

≥ 4 scala dei grigi

Nr. 80 battute al sudore ph 8

IUF 450 / UNI EN ISO 11640

≥ 4 scala dei grigi

**Flessometro**

IUP 20

UNI EN ISO 5402

≥ 30.000

**Resistenza alla trazione**

IUP 40

UNI EN ISO 3377-1

≥ 20N

**Adesione**

IUF 470

UNI EN ISO 11644

≥ 3.50 N/cm

**Resistenza al fuoco**

UNI EN ISO 1021-1/2

positivo

BS 5852 1990 Sec. 4 NI/O-1

positivo

California T.B. 117

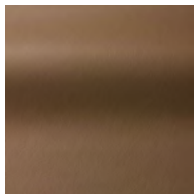
positivo

La pelle extra soddisfa le severe leggi e normative Europee riguardanti l'uso e la presenza di PCP, CFC, Cromo (VI), Dimethylfumarate (DMF) e Azocoloranti nel processo di concia





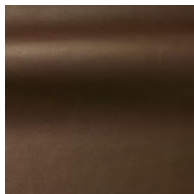
Categoria G1



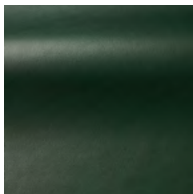
G1 332



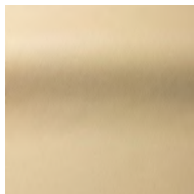
G1 339



G1 611



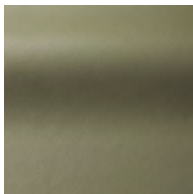
G1 545



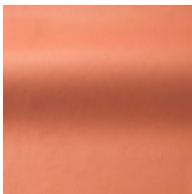
G1 340



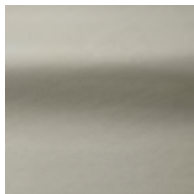
G1 636



G1 336



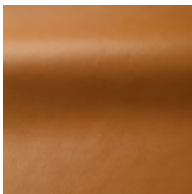
G1 448



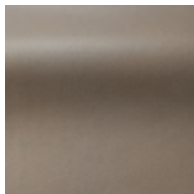
G1 252



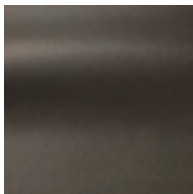
G1 701



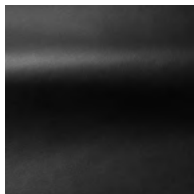
G1 410



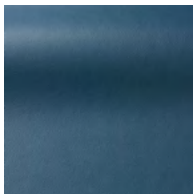
G1 221



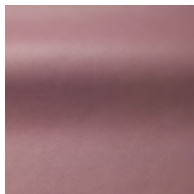
G1 250



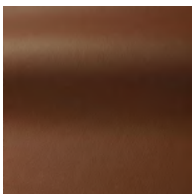
G1 614



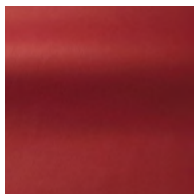
G1 613



G1 704



G1 500



G1 605

Slight differences between dyeing lots have to be considered normal

**Steelcut Trio 3 by Kvadrat**  
**Made in Denmark**

**Composizione**

90% lana - 10% nylon

**Altezza**

140 cm

**Peso**

770 gr/m

**Pilling**

EN ISO 12945 - 4

**Resistenza all'abrasione – Martindale**

EN ISO 12947

100.000 cicli

**Resistenza del colore alla luce artificiale**

ISO 105-B02 - 5/7

**Resistenza al fuoco**

AS/NZS 1530.3

AS/NZS 3837 class 2

BS 5852 Crib 5 with treatment

BS 5852 part 1

DIN 4102 B2

EN 1021-1/2

IMO FTP Code 2010: Part 8

NF D 60 013

NFPA 260

Önorm B1/Q1

SN 198 898 5.3 with treatment

UNI 9175 1IM

US Cal. Bull. 117-2013

**Benefici della lana**

La lana:

è una risorsa rinnovabile

è molto confortevole grazie alla sua capacità di  
assorbire e rilasciare l'umidità

è un ritardante di fiamma

è biodegradabile

è naturalmente resistente al suolo

si consuma gradualmente

**Benefici ambientali**

Risponde ad EU Ecolabel

Non prevede l'uso di coloranti azoici

Non prevede l'uso di coloranti contenenti  
metalli pesanti/ risponde alla normativa ETAD

Non contiene formaldeide

Non prevede l'uso di ritardanti di fiamma  
bromurati

Non sbiadisce

Oli di filatura biodegradabili

Conforme a REACH

**Pulizia e manutenzione**

Usare l'aspirapolvere e pulire  
a secco.



**Steelcut Trio 3 by Kvadrat**  
**Made in Denmark**

**Composition**

90% wool - 10% nylon

**Width**

140 cm

**Weight**

770 gr/m

**Pilling**

EN ISO 12945 - 4

**Abrasion resistance – Martindale**

EN ISO 12947

100.000 rubs

**Xenotest**

ISO 105-B02 - 5/7

**Fire resistance**

AS/NZS 1530.3

AS/NZS 3837 class 2

BS 5852 Crib 5 with treatment

BS 5852 part 1

DIN 4102 B2

EN 1021-1/2

IMO FTP Code 2010: Part 8

NF D 60 013

NFPA 260

Önorm B1/Q1

SN 198 898 5.3 with treatment

UNI 9175 1IM

US Cal. Bull. 117-2013

**Benefits of wool**

The wool:

is a renewable resource

is very comfortable because of its ability to  
absorb and give off humidity

is flame retardant

is biodegradable

is naturally soil resistant

ages with grace

**Environmental benefits**

Complies with EU Eco Flower

No use of AZO dyes

No use of dyes containing heavy metals/  
complies with ETAD norm

No content of formaldehyde

No use of brominated flame retardants

Not bleached

Biodegradable spinning oil

Complies with REACH

**Cleaning and maintenance**

Vacuuming and dry cleaning.



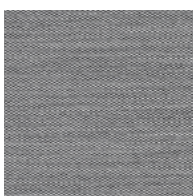
**Categoria H2**



**H2 916**



**H2 336**



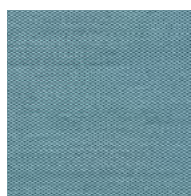
**H2 124**



**H2 636**



**H2 453**



**H2 983**



Mesh by Krall & Roth  
Made in Germany

**Composizione**

75% poliestere - 25% poliammide

**Altezza**

120 cm

**Peso**

ca. 420 gr/ml

**Resistenza all'abrasione**

DIN EN ISO 12947-2:2007

40.000 cicli Martindale (carico 12 kpa)

**Solidità del colore alla luce artificiale**

DIN EN ISO 105-B02:2002

5/7 scala dei blu

**Solidità del colore allo sfregamento secco e umido**

DIN EN ISO 105-X12:2002

4/5

**Solidità alla traspirazione**

DIN EN ISO 105-E04:2009

4/5 acido e alcalino

**Infiammabilità – Test della sigaretta**

DIN EN 1021:2006-01

testato su schiumato ritardante di fiamma B3  
densità minima 22 kg/m<sup>3</sup>

DIN 66084 P-c

**Resistenza del colore al lavaggio a secco**

DIN EN ISO 105-D01:2010

4/5

**Pulizia e manutenzione**

Usare l'aspirapolvere o lavare a secco.

Mesh by Krall & Roth  
Made in Germany

**Composition**

75% polyester - 25% polyamid

**Width**

120 cm

**Weight**

ca. 420 gr/lm

**Abrasion resistance**

DIN EN ISO 12947-2:2007

40.000 rubs Martindale (load 12 kpa)

**Xenotest**

DIN EN ISO 105-B02:2002

5/7 blue scale

**Colour fastness to dry and wet rubbing**

DIN EN ISO 105-X12:2002

4/5

**Fastness to perspiration**

DIN EN ISO 105-E04:2009

4/5 acid and alkaline

**Flammability – Cigarette test**

DIN EN 1021:2006-01

tested with non flame retardant foam B3 minimum  
density of 22 kg/m<sup>3</sup>

DIN 66084 P-c

**Colour fastness to dry cleaning**

DIN EN ISO 105-D01:2010

4/5

**Cleaning and maintenance**

Vacuum-cleaning or dry cleaning.



Categoria RX



RX 00K



RX 00F



RX 00B



RX 00A



RX 00H

## Paintings & chromium platings

### Matte White, Matte Burro, Matte Rose, Matte Mint, Matte Cappuccino, Matte Army, Matte Black

Varnish made with chrome and lead-free pigments. Two-component enamel with polyurethane and acrylic resins. Excellent resistance to chemical and atmospheric agents, detergents, fuels and lubricants.

### Embossed Antracite, Embossed Porfido

“AkzoNobel” registered trademark Interpon 610. Polyester powder coatings TGIC-free Paintings with great light and warmth fastness. High resistance to direct sunlight and atmospheric agents.

### Embossed Corten

2k two-component varnish, Corten is able to confer any support the aspect of the most natural oxidation of the real corten steel, giving at the same time a particular movement to all those supports which due to their chemical and physical nature cannot get oxidized. The effect Materic Corten does not release any powder of iron oxide.

### Metal Gold, Metal Copper, Metal Cacao

1k one-component varnish in imitation of the flat galvanic finishings, it gives light and great brightness to the treated support. Matt metallic final product. highly bright, with anti-scratch performing characteristics and resistant against the main cleaning products and food, through the employment of specific cycles of painting. Apt for supports made on metal, plastic, wood and composites, both for interior and for outdoor employments.



### Metal Diamond

2k two-component varnish with a final bright and diamond effect, in imitation of the goldsmith's art 20 gloss, without overpainting with a top coat. Apt both for interior and for outdoor employment. Highly resistant against usury and abrasion.

### Polished Chrome

CEDIA Tin-plating process – Neutral cobalt  
78% Sn – 22% Cobalt  
Plate flash deposits of tin – cobalt alloy

Chromium platings with galvanic treatment

## Paintings & chromium platings

### Matte White, Matte Burro, Matte Rose, Matte Mint, Matte Cappuccino, Matte Army, Matte Black

Prodotto realizzato con pigmenti esenti da cromo e piombo. Smalto bicomponente a base di resine poliuretaniche ed acriliche. Ottime caratteristiche di resistenza agli agenti chimici ed atmosferici, ai detersivi, ai carburanti e lubrificanti.

### Embossed Antracite, Embossed Porfido

“AkzoNobel” marchio registrato, Interpon 610. Polveri a base poliestere senza l'uso di TGIC Verniciature con ottime caratteristiche di resistenza alla luce ed al calore. Elevata resistenza ai raggi solari ed agli agenti atmosferici.

### Embossed Corten

Smalto bicomponente 2k, Corten è uno smalto in grado di conferire a qualsiasi supporto l'aspetto della più naturale ossidazione del vero Acciaio Corten naturale, regalando matericità a tutti quei supporti che per natura chimico-fisica non possono ossidarsi. L'effetto Materico Corten non rilascia polvere di ossido di ferro.

### Metal Gold, Metal Copper, Metal Cacao

Smalto metallico liscio monocomponente 1k ad imitazione delle finiture galvaniche velur lisce, regala luce e grande brillantezza finale al supporto trattato. Prodotto a finire metallizzato opaco, altamente luminoso, con performanti caratteristiche anti-graffio e resistente ai principali prodotti di pulizia e agli alimenti, attraverso l'utilizzo degli appositi cicli di verniciatura. Adatto per supporti in metallo, plastica, legno e compositi, sia per applicazioni interne, sia per applicazioni esterne.



### Metal Diamond

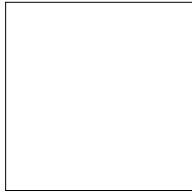
Smalto bicomponente 2k con un effetto diamantato luminoso a finire, ad effetto ed imitazione della diamantatura orafa a finire 20 gloss, senza sovraverniciatura con trasparente. Adatto sia per ambienti da interior che da outdoor. Resistentissimo all'usura e all'abrasione.

### Cromo lucido

CEDIA Processo stagno – Cobalto neutro  
78% Sn – 22% Cobalto  
Deposizione flash della lega stagno – cobalto

Cromature a trattamento galvanico





15 - matte white



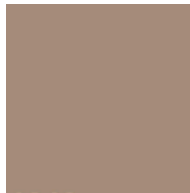
16 - matte burro



13 - matte rose



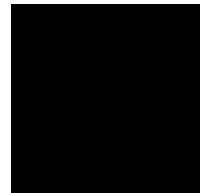
19 - matte mint



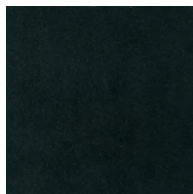
18 - matte  
cappuccino



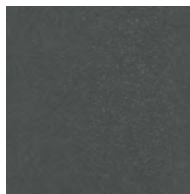
9 - matte army



2 - matte black



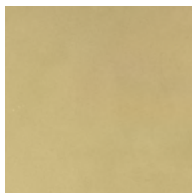
10 - embossed  
antracite



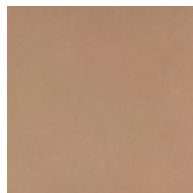
21 - embossed  
porfido



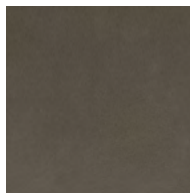
20 - embossed  
corten



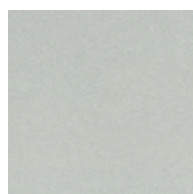
23 - metal gold



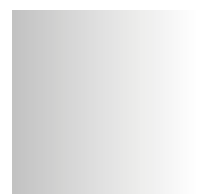
24 - metal  
copper



25 - metal  
cacao



22 - metal  
diamond



5 - polished  
chrome



**SITIA srl**  
Via G. Matteotti 6  
36056 Tezze sul Brenta, Vicenza, Italy  
T +39 0424 898497 / 898382 — F +39 0424 1700102  
info@sitia.com — www.sitia.com

#### REGIONAL OFFICE

**SINGAPORE**  
40 Carpenter Street  
059919 Singapore  
T: +65 91376564  
jr@motion-consult.com

#### CREATIVE DIRECTION

(Creative & art direction, concept & styling)  
MM Company / mmcompany.eu

#### PRINTED IN ITALY

Laboratorio Grafico BST / graficabst.com

#### PHOTOS

Photopiù (campaign, still life & main photos) / photopiu.it

#### SHOWROOMS

**London – UK**  
The Pipeworks, 26-30  
Prescott Place, London, SW4 6B  
T: +44 020 7720 6006 – antonio@laporta.co.uk

**Dublin – IRELAND**  
7-8 Burton Hall Road,  
Sandyford Business Park, Dublin 18  
T: +353 (0) 1 217 8000 – mleyden@bizquip.ie

**Amersfoort – NETHERLANDS**  
Basicweg 22  
3821 BR Amersfoort, Nederland  
T: +31 (0) 33 4535090 – patrick.dommelen@nowystyl.com

**Jakarta – INDONESIA**  
Jl. Pakubuwono VI No.79  
Kebayoran Baru, Jakarta Selatan 12120  
T: + 62 21 725 7979 – zaky.makarim@malka.co.id

**Los Angeles – USA**  
8790 Beverly Blvd  
West Hollywood, CA 90048  
T: +1 310 652 2520 – soluzionila@sbcglobal.net

**Abu Dhabi – UNITED ARAB EMIRATES**  
SHEIKHA FATEMA PARK, GF02  
T: +971 52 566 96 80 - inquiry@corsodesign.me

**West Melbourne – AUSTRALIA**  
Unit 3/ 62 Fallon Street Brunswick VIC 3056  
T: + 03 8379 0200 – melbourne@uci.com.au

**Ho Chi Minh – VIETNAM**  
199C Nguyen Van Huong, Thao Dien Ward District 2  
T: +84 028 36369944 – thuynt@akacompany.com.vn

**Yerevan – REPUBLIC OF ARMENIA**  
9 Baghramyan ave., off. 1,  
T: 00 374 10 52 13 53 – info@royalint.org

**Vicenza – ITALY**  
Piazza dei Signori, 56, 36100  
C: +39 348 391 1368 – lidea@amatori.it

**Accra – GHANA**  
Sunflower Road – East Legon  
T: +233 54432 2920 – design@casapalladio.com





— *visit now*  
sitia.com

SITIA srl  
Via G. Matteotti 6  
36056 Tezze sul Brenta, Vicenza, Italy  
T +39 0424 898497 / 898382 — F +39 0424 1700102  
info@sitia.com — www.sitia.com