

Products / Planters / Faz Pot 61x61x50

Faz pot 61x61x50

by Ramón Esteve

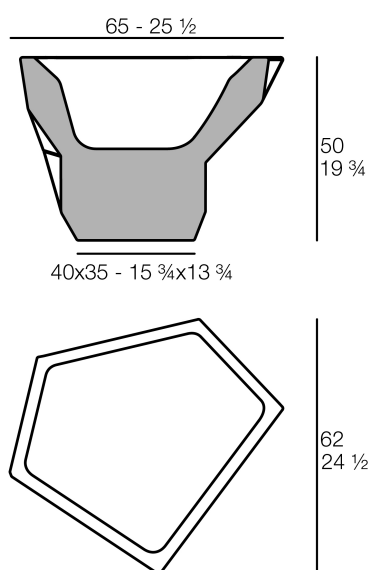
Faz is a modular collection of outdoor furniture and planters designed by Ramón Esteve for Vondom. He is the architect of harmony, serenity, timelessness and universality, and he has created mineral and emphatic shapes that make Faz a design that contextualizes with homes and installations. An ambience, encircling as a result of the blissful combination of the material and lighting, so that the sole sensation would be its fusion.



Info

Description

Weight: 8 Kg



FAZ - Jarro Pequeno C = 28L
FAZ Smal Planter C = 7 ½ gal

Finishes

finishes

BASIC

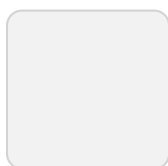
Ref. 54400A



purjai red



orange



ice



notte blue



crema



green



white



black



bronze



steel



anthracite



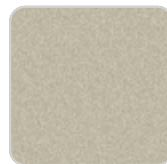
red



khaki



taupe



ecru



beige

Matt Polyethylene

LACQUERED

Ref. 54400RF



red 3114



taupe 3104



purjai red



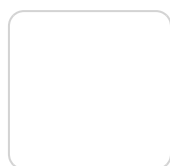
ecru 3103



black 3102



anthracite 3106



white 3101



modo green



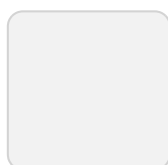
champagne

Lacquered Polyethylene

lighting

LIGHT

Ref. 54400W

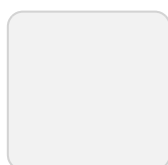


ice

White internally lit unit with LED technology. Available only in matte ice white finish.

RGBW LED

Ref. 54400L



ice

Unit with internal lighting with RGBW LED technology and remote control unit for switching colors. Available only in matte ice white finish. Remote control included.

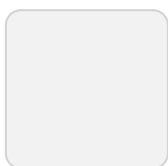
RGBW LED BATTERY

Ref. 54400Y

Unit with internal lighting with battery-powered RGBW LED technology. Includes charger and remote control for switching colors and charger. Available only in matte ice white finish.

RGBW LED DMX BATTERY

Ref. 54400DY



ice

Unit with internal lighting with RGBW LED technology and remote control unit for switching colors. Also controlled by DMX-1024 (wireless), enabling communication between one or more products simultaneously via the DMX transmitter (not included). There are two options to choose from: Professional XLR DMX and Home WIFI DMX. (Remote control included).

Ambients

