

Posidonia coffee table

by Ramón Esteve

Posidonia, the new collection of **designer outdoor furniture** is capable of creating an atmosphere of serenity and balance, awakening the user's sensibility and inviting them to enjoy every moment.



Info

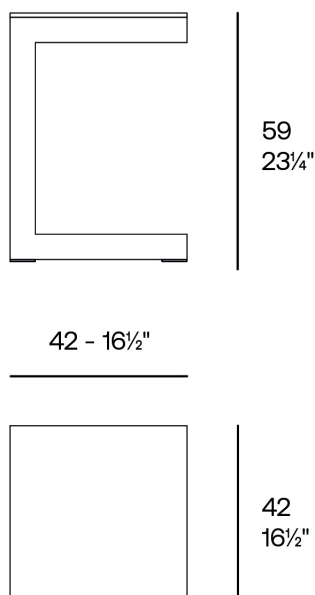
Description

The Posidonia coffee table, designed by Ramón Esteve, stands out for its thermo-lacquered aluminium structure, prepared to face different weather conditions, offering durability and lightness.

Its HPL surface is highly resistant to scratches and is available in different sizes to adapt to different spaces.

In addition, a wide palette of colours allows you to create customised combinations of HPL surface and aluminium structure.

Weight: 2.58 Kg



POSIDONIA Mesa Café 42x42x59
POSIDONIA Coffee Table 16¹/₂"x16¹/₂"x23³/₄"

Finishes

finishes

ALUMINIUM

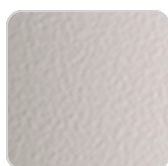
Ref. 54708



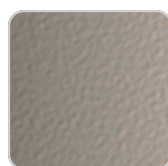
white



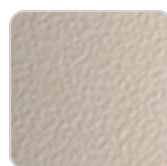
smoked



ecru



tortora



cream



garnet



brown



green



blue



gray



anthracite



black

Lacquered aluminium profile.

tabletops

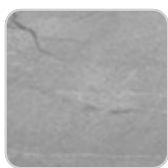
Solid Core

Ref. 54708HPL



VONDOM

white stone



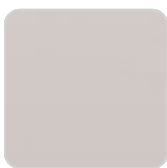
gray stone

smoked



white (white edge)

ecru stone



ecru

tortora stone



tortora

black stone



cream



garnet



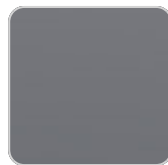
brown



green



blue



anthracite

Solid Core wood

Ref. 54708HPL



oak1



oak2

Ambients

