

# lunar

DESIGN  
MATTEO NUNZIATI

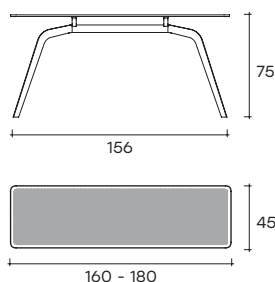
modello registrato  
registered model



portata sul piano: 50 kg  
load capacity on top: 50 kg

Consolle con piano  
in vetro da 12 mm fuso  
a gran fuoco, temperato  
e retroverniciato  
con tinte metallizzate  
Grigio Lava  
o Champagne. Base  
in metallo verniciato,  
finitura Grigio Lava.

*Console with 12 mm  
fused, tempered and  
back-lacquered glass  
top with metal shades  
Lava Grey or Champagne.  
Metal painted base,  
"Lava Grey" finish.*



dimensioni L, P, H  
dimensions L, W, H  
(cm)

COD./CODE

L

P/W

H

peso netto  
net weight  
(kg)

peso lordo  
gross weight  
(kg)

volume imballo  
package volume  
(m³)

Consolle con piano in vetro fuso.  
*Console with fused glass top.*

**LU160/VF- \_**

160

45

75

39

68

0,43

**LU180/VF- \_**

180

45

75

41

71

0,45

## VETRO RETROVERNICIATO \_ BACK PAINTED GLASS

CAT. COLORE COLOR CAT.	COLORI COLORS		
		Vetro trasparente fuso Fused transparent glass	
CAT.2 Tinta metallizzata Metallic color	Grigio lava Lava grey	VF-LA	
	Champagne Champagne	VF-CH	

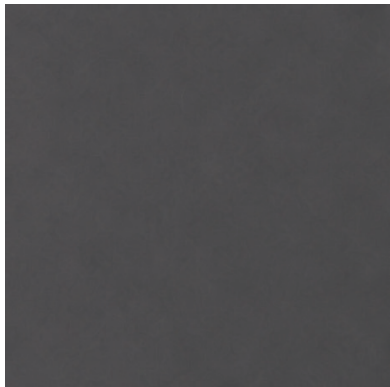
Lunar è disponibile anche nelle altre finiture di Cat.2 per vetro fuso.  
Per finiture su richiesta rivolgersi all'ufficio commerciale.

*Lunar is also available in the other finishes of fused glass Cat.2.  
For customized finishes contact FIAM customer service.*

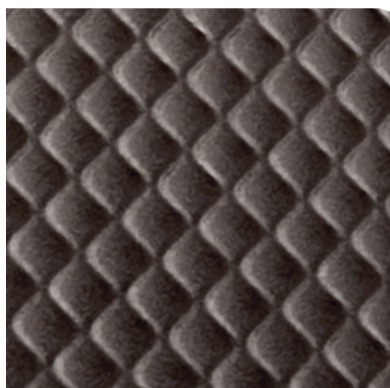
---

**FINITURE**  
**FINISHES**

---

**Base in metallo**  
**Metal base**

grigio lava  
lava grey

**Piano in vetro fuso retroverniciato**  
**Back-painted fused glass top**

grigio lava  
lava grey



champagne  
champagne