



GANDIABLASCO

STRUCTURE FABRICS COLLECTION
COLECCIÓN TELAS DE ESTRUCTURA

OUTDOOR 2025

Colección telas estructura para exterior. Outdoor structure fabrics collection

Imágenes telas por categorías. Fabric images by category

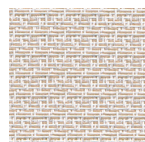
SUNBATHE

[self-supporting fabrics - telas autoportantes]

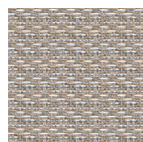
MOARÉ



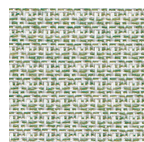
white



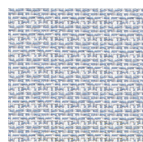
ivory



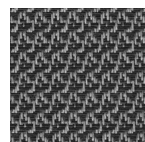
stone



light green

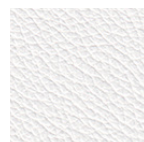


light blue



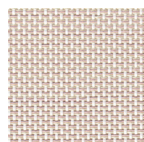
black

BATYLINE®

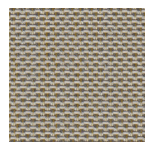


white

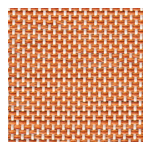
GRID



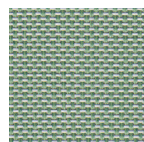
ivory



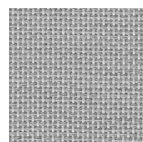
bronze



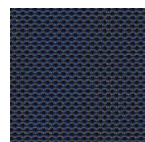
terracotta



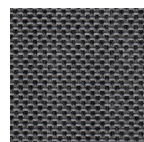
green



light grey



night blue



black

SOLARSAFE

[sun protection for parasols - protección solar para sombrillas]

SKYCOVER



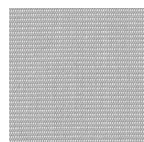
white



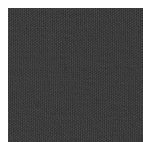
sand



bronze

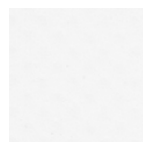


grey



carbon

OPAC

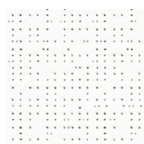


white

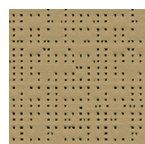
OUTDOOR SPACES

[sun protection - protección solar]

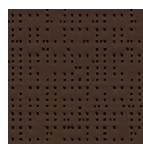
SOLTIS 92



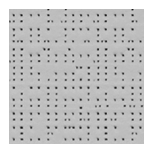
white



sand



bronze



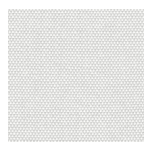
light grey



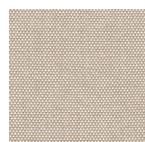
anthracite

Telas para techos y estores.
Fabrics for ceilings and rollers.

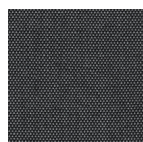
AIR



white



sand

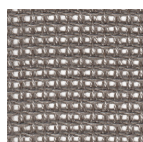


graphite

WIND



white



mineral

Telas para cortina.
Fabrics for curtains.









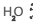



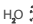



























*La representación de los colores puede variar de la realidad.

*The color visualization may differ from reality.



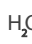



Colección telas estructura para exterior. Outdoor structure fabrics collection

Especificaciones técnicas. Technical specifications



Pulse para acceder a la sección de limpieza y mantenimiento.
For cleaning and maintenance, please click to access.

	composición composition	peso weight gr/m ²	abrasión Martindale abrasion resistance ciclos/cycles	solidez colores a la luz colour lightfastness	resistencia al fuego flame resistance	símbolos symbols
SUNBATHE						
MOARÉ	71% PVC - poliéster recubierto/ coated polyester + 29% acrílico teñido en masa/ solution dyed acrylic	415	≥100.000	ISO 105 B04 ≥7-8 (scale 1-8)	CAL TB 117 · DIN 4102 B2 · NFPA-260 class I · UNE-EN 1021 parts 1-2 · IMO FTP Code 2010 Part 8	     
BATYLINE®	100% PVC - poliéster 100% PVC - polyester	560	>120.000	ISO 105 B04 7-8 (scale 1-8)	CAL TB 117 · NFPA-260 class I · DIN 4102 B1 · IMO FTP Code 2010 Part 8	   
GRID	100% PVC - poliéster 100% PVC - polyester	460	50.000	ISO 105 B04 7-8 (scale 1-8)	NOT PASS	   
SOLARSAFE						
SKYCOVER	100% acrílico teñido en masa 100% solution dyed acrylic	260	30.000	ISO 105 B04 4-5 (scale 1-5)	BS5852 source 0 · CAL TB 117 · NFPA-260 class I · UNE-EN 1021 part 1	     
OPAC	100% acrílico teñido en masa 100% solution dyed acrylic	640	-	ISO 105 B04 4-5 (scale 1-5)	UNE 23727-90 M2 · DIN 4102 B1	   
OUTDOOR SPACES						
SOLTIS 92	100% PVC - poliéster 100% PVC - polyester	420	-	-	UNE 23727-90 M1 · DIN 4102 B1	   
AIR	100% acrílico teñido en masa 100% solution dyed acrylic	160	-	ISO 105 B04 ≥4 (scale 1-5)	NOT PASS	     
WIND	100% acrílico teñido en masa 100% solution dyed acrylic	150	-	ISO 105 B04 4-5 (scale 1-5)	NOT PASS	     


SÍMBOLOS. SYMBOLS

 Repelente al agua / Water repellent. *Impermeable al agua / *Waterproof	 Uso exterior. Outdoor use	 Ausencia disolventes. Solvent free	 Tratamiento antimanchas. Stain resistant treatment	 Reciclado y reciclable. Recycled and recyclable	 Resistente al moho Mould resistant
---	--	---	---	--	---


Limpieza en seco. Dry cleaning

-  No lavar en seco.
Do not dry clean.
-  Lavado en seco, en tintorería, con
tetracloretileno. Ciclo delicado.
Professional dry cleaning, with
tetrachloroethylene. Delicate cycle.



Lavado. Washing Instructions

-  Lavado a máquina ciclo corto con centrifugado
corto a temperatura máxima de 30 °C.
Short cycle machine wash and short spin cycle at a
maximum temperature of 30 °C.



Blanqueado. Bleached

-  Usar solo blanqueadores de cloro o lejía.
Use only chlorine bleach or bleach.

Secado. Drying

-  No puede secarse en secadora.
Do not tumble dry.
-  No puede secarse en secadora.
Do not tumble dry.

Planchado. Ironing

-  Puede plancharse a una temperatura máxima de 110 °C.
La plancha de vapor puede causar daño irreversible.
Iron at a maximum temperature of 110 °C.
Using a steam iron may cause permanent damage.
-  Planchar sin vapor.
Iron without steam.