

KALEIDO



Modular range with or without backrest.

Versions:

- One-color
- Two-colors (inverted colors)



.....M
Monocolore
One colour



.....B
Bicolore
Two colours

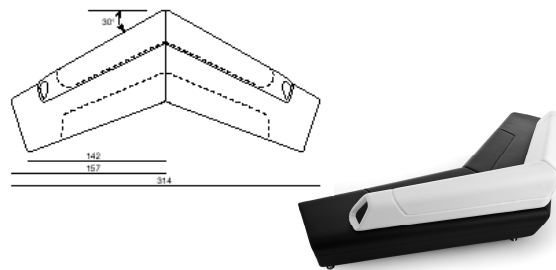
Seat: steel frame, with upper injection of fireproof polyurethane, springing through elastic belts. Density +/- 90 Kg./m3.

Backrest: steel frame, with upper injection of fireproof polyurethane. Density +/- 70 Kg./m3.

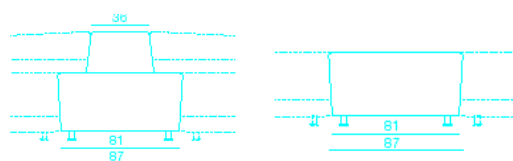
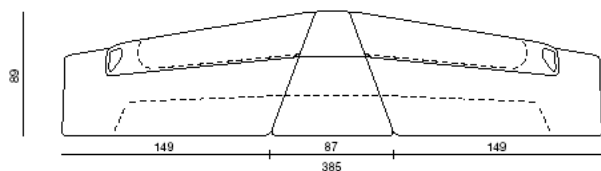
Supporting glides: anti-slip cylindrical glides in polished aluminum.



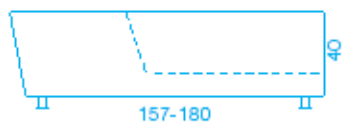
Elements matched in the deepest part,
create **120° angular compositions**.



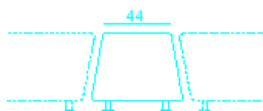
A single angular element (with or without backrest)
creates **front linearity** between the various matched elements.



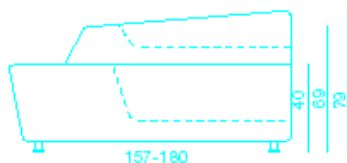
More **angular single elements** matched, can create “coil” compositions.



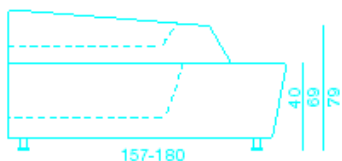
The linking element gives **linear continuity** to the modular elements.



Dimensions modular elements with backrest



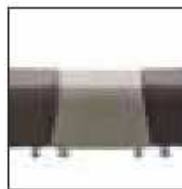
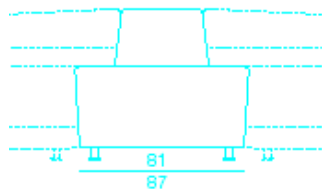
Elemento destro
Right element



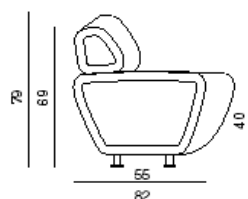
Elemento sinistro
Left element



Elemento angolare
Corner element



Seduta collegamento
Linking seat



Dimensions modular elements without backrest

