



Paw CTS Coffee Table

design Studio Pastina, 2020

Paw coffee table with four-legs base in lacquered metal. Top available in ceramic or metal.

The version with metal top is suitable for outdoor use. The Paw coffee table is available in three different sizes.



Colors and Materials

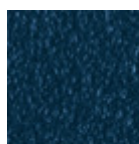
Structure



Light blue steel



White steel



Ocean blue steel



Sand steel



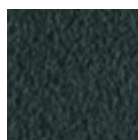
Bronze Steel



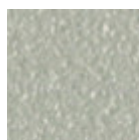
Fango steel



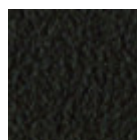
Pastel yellow steel



Grafite steel



Light grey steel



Brown steel



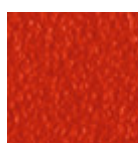
Black steel



Ocher steel



Facepowder pink steel

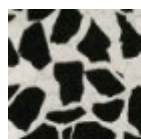


Red steel

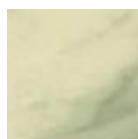


Sage green steel

Coating

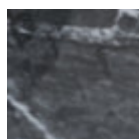


Venetian glossy ceramic

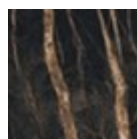


Ceramic with effect calacatta marble

1 color



Black greek glossy marble ceramic



Noir desir glossy ceramic marble



Light blue steel



White steel



Ocean blue steel



Bronze Steel



Sand steel



Fango steel



Pastel yellow steel



Grafite steel



Light grey steel



Brown steel



Black steel



Ocher steel



Facepowder pink steel



Red steel



Sage green steel

Dimensions

Dimensions

Volumetric Details

Weight 13 Kg
Volume 0.14 mc
Package 1

Image not found or type unknown

	cm	inch
A	30	11.8
B	90	35.4
C	50	19.7