

MIDJ
INITALY

Calla S75 M PP Stool

design Fabrizio Batoni, 2019

Kitchen stool with four-legs painted steel base and plastic shell.

Optional: cushion upholstered in fabric, leather or faux leather. The stool in the version with plastic shell is also available with treatment for outdoor use.

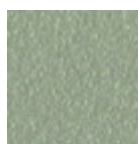


Colors and Materials

Structure



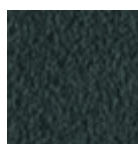
White Steel



Sand Steel



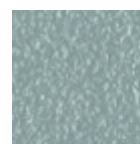
Pastel Yellow Steel



Grafite Steel



Black Steel



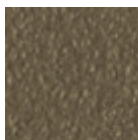
Light blue steel



Ocean Blue Steel



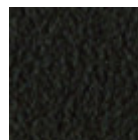
Bronze Steel



Fango Steel



Light Grey Steel



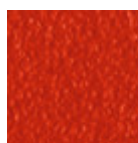
Brown Steel



Ocher Steel



Facepowder Pink Steel



Red steel



Sage Green Steel

Coating



Polypropylene

9 Colors

Dimensions

Volumetric Details

Weight 7 Kg
Volume 0.25 mc
Package 1

Image not found or type unknown

	cm	inch
A	98	38,6
B	45	17,7
C	50	19,7
D	66	26