

MIDJ INITALY

Calla S M_X PP Chair

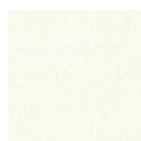
design Fabrizio Batoni, 2019

Calla chair on fixed trestle with four ways base in lacquered steel.
Polypropolene seat. The chair is suitable for outdoor use. Optional: fixed cushion for the seat upholstered in leather, faux leather or fabric. The chair is also available in the version with armrests and upholstered, with and without armrests.

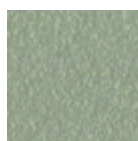


Colors and Materials

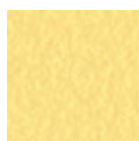
Structure



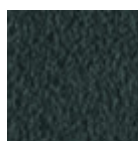
White Steel



Sand Steel



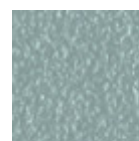
Pastel Yellow Steel



Grafite Steel



Black Steel



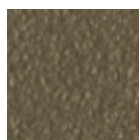
Light blue steel



Ocean Blue Steel



Bronze Steel



Fango Steel



Light Grey Steel



Ocher Steel



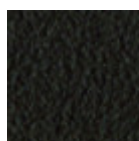
Facepowder Pink Steel



Red steel



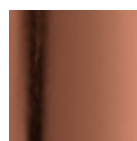
Sage Green Steel



Brown Steel



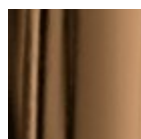
Chrome



Pink Gold

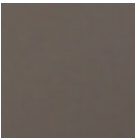


Black Nickel



Golden Bronze

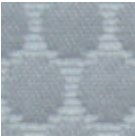
Coating



Polypropylene

9 Colors

Extensions



Bubble Fabric

14 Colors



Carabù Fabric

15 Colors



Cotton Club Fabric

13 Colors



Fenix Wool Fabric

13 Colors



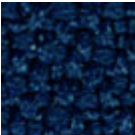
Hot Fabric

14 Colors



Main Line Flax Fabric

16 Colors



Mirage Fabric

6 Colors



Scubidù Fabric

10 Colors



Second Fabric

11 Colors



Visual Fabric

11 Colors



Velvet Superb

15 Colors



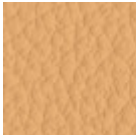
Secret Faux Leather

22 Colors



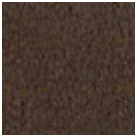
Vintage Faux Leather

12 Colors



Fiore Leather

18 Colors



Vintage Leather

4 Colors

Dimensions

Dimensions

Volumetric Details

Weight 6 Kg

Volume 0.15 mc

Package 1

Image not found or type unknown

	cm	inch
A	79	31,1
B	47	18,5
C	53	20,9
D	47	18,5