

MIDJ INITALY

Suite Table

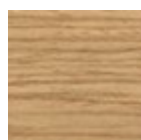
design AtelierNanni, 2017

Table with wooden four legs base. Supports in lacquered steel, rectangular top with rounded corners in glass or crystalceramic.



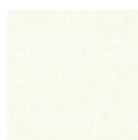
Colors and Materials

Structure

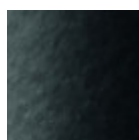


Lacquered ash

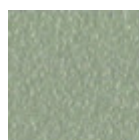
9 Colors



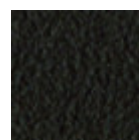
White Steel



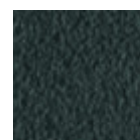
Acciaio Nero



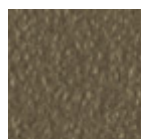
Acciaio Corda



Acciaio Marrone



Grafite Steel



Fango Steel



Bronze Steel



Pastel Yellow Steel



Ocher Steel



Red steel



Sage Green Steel



Light blue steel



Ocean Blue Steel



Light Grey Steel



Facepowder Pink
Steel

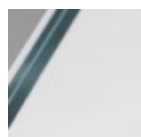


Pink Gold

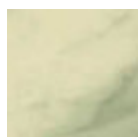


Black Nickel

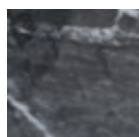
Coating



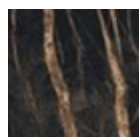
Extraclear
Transparent Glass



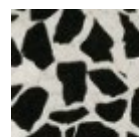
Crystalceramic with
effect calacatta
marble



Crystalceramic
Glossy Black Greek
Marble



Crystalceramic with
effect noir desir
marble



Venetian
crystalceramic

Dimensions

Dimensions not found or type unknown

	A (cm)	B (cm)	C (cm)
	(inch)	(inch)	(inch)
220x116	76	220	116
(cm)	29.9	86.6	45.7
(inch)			

	A (cm)	B (cm)	C (cm)
	(inch)	(inch)	(inch)
250x120	76	250	120
(cm)	29.9	98.4	47.2
(inch)			

Volumetric Details

Weight 123 Kg

Volume 0.82 mc

Package 3

Downloads

3D Suite 220x116 (zip) - <https://www.midj.com/images/uploads/resources/suite-220x116-3d.zip>

3D Suite 250x120 (zip) - <https://www.midj.com/images/uploads/resources/suite-250x120-3d.zip>