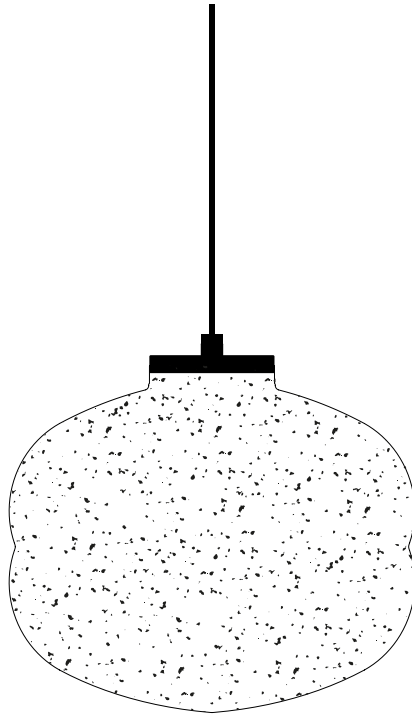


BASO

by e-ggs

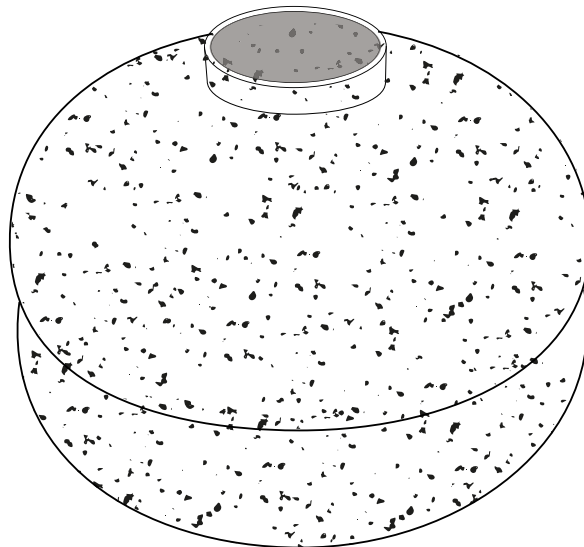
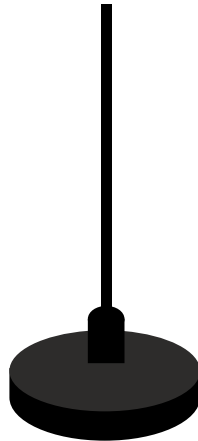


Even if the name comes from Venice, its language is universal: Baso echoes the compact shape of a kiss, generous in scale yet delicate in presence. And, as the chant goes, you can give it to whoever you like—after all, with its recycled polyethylene lampshade, it'll find a place anywhere.

PE LIGHTING COLLECTION MADE FROM 90% RECYCLED POLYETHYLENE

Second life for post-consumer waste

- Reuse of industrial waste
- Sorted by color and melted at controlled temperatures, ensuring sustainability from the production stage
- Recycling of mono-polymers supports a truly circular process, allowing the material to be reused endlessly without loss of quality

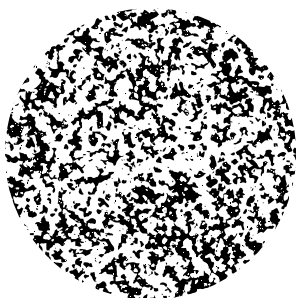


The Moon Landing

- Tactile lampshades evoking the surface of the moon, expressed through a warm, atmospheric, and contemporary aesthetic
- A texture shaped by the varying density of LDPE granules
- The LED light interacts with the product through its transparency, transforming and diffusing into the surrounding space

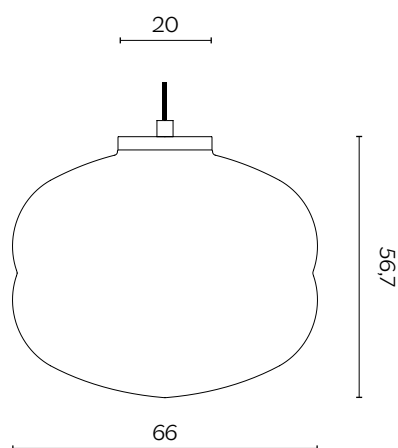
A new sustainable material





- LDPE: Low-density polyethylene
- Extremely lightweight and durable
- Stable between -10° and +50°
- Fully recycled and recyclable



DIMENSIONI | DIMENSIONS

lunghezza | width: 66 cm
larghezza | depth: 66 cm
altezza | height: 56,7 cm

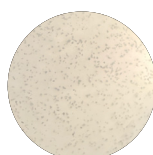


x3  E27 (not included)*
 1095 lm
 max 75W
 2700 K

*Valori indicativi basati su sorgenti
luminose consigliate
/ Indicative values based on
recommended light sources.

FINITURE PARALUME | LAMPSHADE FINISHES

POLIETILENE RICICLATO | RECYCLED POLYETHYLENE



White Moon