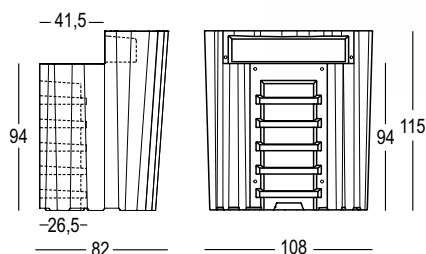
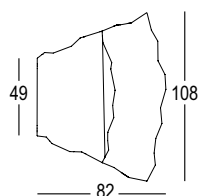
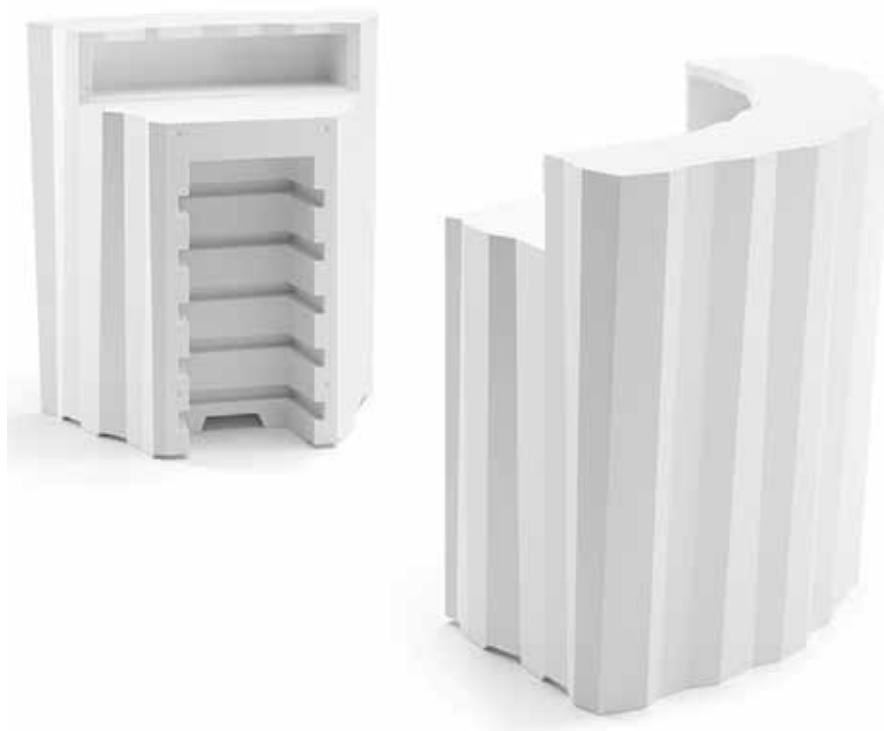


FROZEN CORNER

DESIGN
MATTEO RAGNI +
MAURIZIO PRINA
2015



Versione **light** /
Light version



Material: Polietilene / *Polyethylene*

Gross Weight: Kg 39,4

Use: **INDOOR / OUTDOOR**

Details:

Piedini regolabili / *Adjustable feet*

Kit di fissaggio / *Fixing kit*

Accessories:

Art. A4409 - Kit 4 ruote / *4 wheels kit*

Art. A4461

Sistema di fissaggio a terra /

Fixing kit system


Elemento angolare che può essere utilizzato da solo o in coppia per creare consolle o desk di accoglienza. Facile da spostare, resistente agli urti, predisposto per 5 mensole, un top superiore e è munito di 2 nicchie sul piano d'appoggio per l'utilizzo operativo. Abbinato all'elemento lineare svolge funzione di raccordo per creare banconi bar o receptions.

A corner element that can be used alone or paired to create consoles or reception desks. "Frozen Corner" is easy to move and impact-resistant. It can have up to 5 shelves, a worktop and has 2 niches. Matched with the linear element, "Frozen Corner" can be used to create bar counters or reception desks.

COLORI BASE / BASIC COLOURS

Art. 6309 | **FROZEN CORNER**

C2  Bianco C2
White C2

N4  Golden rust
Golden rust