

# Pointhouse

## **FLORA**

**IMPILABILE / STACKABLE**

Design **Pointhouse**

**Scheda tecnica**  
**/ *Technical sheet***



## Sedia in tubolare metallico a sezione tonda impilabile con scocca curvata in legno multistrato nobilitato melamminico

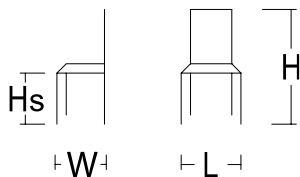
Seduta impilabile dalle curve delicate ed essenziali, con scocca in legno multistrato nobilitato melamminico effetto legno o monocolore, da abbinare ai piani o alle gambe dei tavoli.

## / Stackable chair with round section tubular structure and melamine nobled curved plywood seat

Stackable chair with delicate and essential curves; melamine nobled curved plywood seat in monochrome or wood effect finish, matchable with the table tops or legs.

### MISURE / SIZE:

L.49XW.50XHS.45XH.89



### PESO & IMBALLO / WEIGHT & PACKING:



Numero colli  
Boxes number

### FLORA

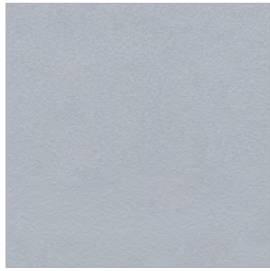
Box: 51,5x54x54  
m3 0,150  
tot. Kg. 11,5

## FINITURE / FINISHES:

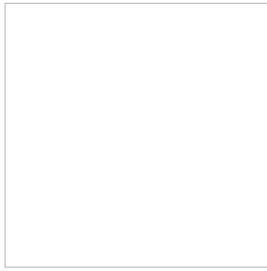
### Struttura e gambe / Structure and legs:

Metallo verniciato  
Painted metal

\*Solo per fusto Eva 1 ed Eva 4  
Only for Eva 1 and Eva 4 structures



**02** GRIGIO ALLUMINIO  
ALUMINIUM GREY



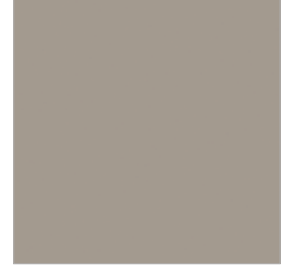
**06** BIANCO OPACO  
MATT WHITE



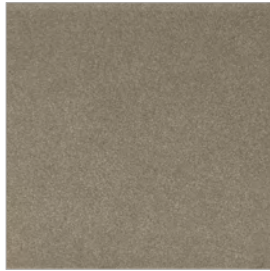
**07** NERO OPACO  
MATT BLACK



**18** GRIGIO SILVER  
SILVER GREY



**22** TORTORA  
DOVE GREY



**24** BRONZO  
BRONZO



**25** ROSSO MATTONE  
BRICK RED



**0G** GHISA  
CAST IRON



**0P** GRIGIO PIOMBO OPACO  
MATT LEAD GREY

## FINITURE / FINISHES:

### Seduta / seat:

melaminico / Cleaf  
melamine / Cleaf

### Melamminico

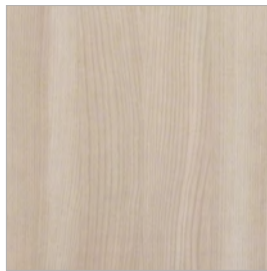
E' un rivestimento prefinito e viene ottenuto utilizzando carte (stampate) impregnate e spalmate sul lato decorativo con resine melaminiche (es. pannelli di truciolare o mdf) garantendo ottima stabilità e una sufficiente resistenza all'usura.

### /Melamine

It is a prefinished covering and it is obtained by using impregnated and coated papers on the decorative side with melamine resins (ex. Chipboard panels or mdf) guaranteeing an excellent stability and a sufficient wear resistance.



**8A** BIANCO LARICE  
WHITE LARCH



**8G** OLMO CHIARO  
LIGHT ELM



**8P** ROVERE CRUDO  
RAW OAK



**8S** QUERCIA BIANCO  
WHITE OAK

## CLEAF

**Marmo:** una finitura morbida e setosa che si abbina a decorativi tinta unita o effetto pietra.

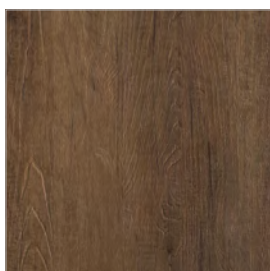
**Legno:** L'effetto spazzolatura tipico delle essenze lignee lavorate da abili mani artigiane.

**Beton:** Ispirata alle murature urbane dell'architettura industriale, ripropongono la profondità di una parete in calcestruzzo o intonaco spatolato.

**Marble:** A soft and silk-smooth finish that can match solid colour or stone elements.

**Wood:** The brushed effect typical of the wood essences worked by skilled handcraft.

**Beton:** Inspired by urban walls typical of industrial architecture, reintroduce the depth of a concrete or plaster wall.



**7N** LECCIO  
HOLM OAK