

2023

IDEAS FOR MY HOME

RIFLESSI

RIFLESSI COLLECTION | TAVOLI SEDIE CONSOLLE MADIE TAVOLINI SPECCHI OROLOGI LAMPADE

Shangai Limited Edition

DESIGNED AND MADE IN ITALY



04 **TAVOLI**
Tables

60 **SEDIE**
Chairs

96 **CONSOLLE**
Consoles

108 **MADIE**
Sideboards

130 **TAVOLINI**
Coffee tables

138 **SPECCHI**
Mirrors

154 **OROLOGI**
Wall Clocks

160 **LAMPADE**
Lamps

Riflessi

SPAZI DEDICATI CHE
RACCONTANO LE
NOSTRE ESCLUSIVE
COLLEZIONI

AREAS DEDICATED TO
OUR EXCLUSIVE COLLECTIONS

FLAGSHIP STORE FLAGSHIP STORES

Sono i punti vendita monomarca nei quali poter ammirare l'intera collezione Riflessi, dove trovare soluzioni di arredo, abbinamenti di forme, materiali e colori sempre nuovi ed originali.

Our own brand stores where you can admire the entire Riflessi collection, find décor solutions and new, original combinations of patterns, materials and colours.

Milano



MILANO
ROMA
NAPOLI
BERGAMO
PESCARA
BARI
BRESCIA
TORINO
REGGIO CALABRIA



Bari



Pescara

**UNA PRESENZA DINAMICA NELLE
PRINCIPALI CITTÀ ITALIANE**

OUR NEW FLAGSHIP STORES TO THE
FORE IN THE MAIN ITALIAN CITIES

Brescia



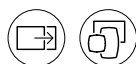
Napoli



Roma



SHANGHAI



LIVING



PEGASO



ATLANTE



ATLANTIS



MASTER



TREBLE



CUBRIC

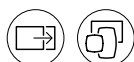


MANHATTAN

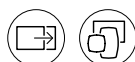




SABINO



TOWER



ROUND



SQUARE



CROSS



TOLEDO



NEW PLANO



TAVOLI

Come personalizzare il tuo tavolo

TABLES - HOW TO CUSTOMIZE YOUR TABLE

Innumerevoli proposte e combinazioni per i nostri tavoli componibili.
A host of ideas and combinations for our modular tables.

01 SCEGLI IL BASAMENTO CHOOSE THE BASE



SHANGHAI



PEGASO



LIVING

02 SCEGLI LA FORMA DEL PIANO CHOOSE THE SHAPE OF THE TOP

Il piano è proposto in diverse forme e numerose dimensioni.

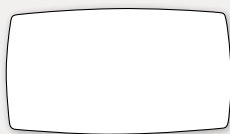
Nella maggior parte delle conformazioni il piano è disponibile fisso o nella versione allungabile.

The top comes in different shapes and several dimensions.

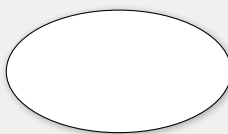
Most configurations are available with a fixed top or as an extending version.



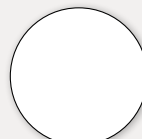
RETTANGOLARE
Rectangular



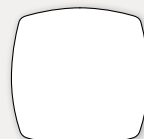
A BOTTE
Shaped edges



OVALE
Oval



ROTONDO
Round



SQUARE

Massima libertà compositiva

Freedom to create compositions



REALIZZIAMO IL PIANO

ANCHE SU MISURA

TOP DIMENSIONS CAN
BE TAILOR MADE



LEGENDA LEGEND



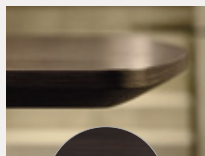
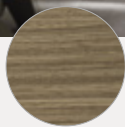
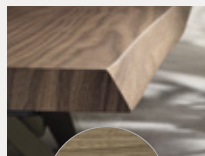
Piano allungabile
Extendible top



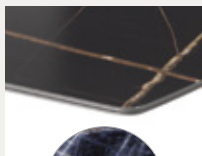
Piano disponibile in forme
diverse - Top available in
different shapes

03 **PERSONALIZZALO CON I MATERIALI** CHOOSE THE MATERIALS**PIANO IN LEGNO**

Wood top

**Bordo bisellato**
Beveled wood**Rovere coke**
termotrattato, noce
canaletto e rovere poro
aperto tintoThermo-treated coke
oak, american walnut
and open pore stained
oak**Bordo irregolare**
sp.5 cm
Shaped wood th. 5 cm**Rovere coke**
termotrattato, noce
canaletto e rovere poro
aperto tintoThermo-treated coke
oak, american walnut
and open pore stained
oak**PIANO IN CERAMICA**

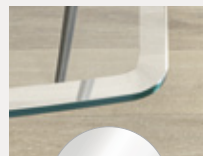
Ceramic top

**Ceramica lucida o**
opaca
Matt or glossy ceramic**PIANO IN MARMO**

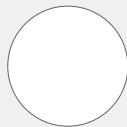
Marble top

**Marmo naturale**
Natural marble**PIANO IN CRISTALLO**

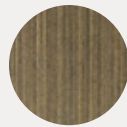
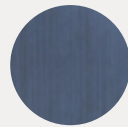
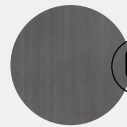
Glass top

**Cristallo temperato**
extra-chiaro,
trasparente o fumé.
Extraclear tempered
transparent or smoked
grey glass**BASE IN METALLO VERNICIATO**

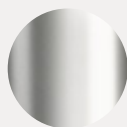
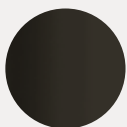
Metal painted base

**Bianco white****Grafite**
graphite**Champagne**
perlato
Pearly
champagne**Oro rosa**
Pink gold**BASE IN METALLO SPAZZOLATO A MANO**

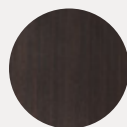
Metal hand brushed base

**Ottone brass****Cobalto cobalt****Titanio**
titanium**BASE IN ACCIAIO INOSSIDABILE**

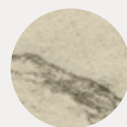
Inox steel base

**Specchiante**
Mirror effect**Reflect Rose**
Gold
Reflect Rose
Gold**Reflect Blue**
Reflect Blue**Reflect Black**
Reflect Black**BASE IN LEGNO**

Wood base

**Rivestita in**
noce Canaletto
o rovere poro
aperto tinto
Covered in
american walnut
or open pore oak
stained**BASE IN PIETRA**

Stone base

**Rivestita in**
pietra
arenaria
Rivergrey o
Arabik
Covered in
Rivergrey or
Arabik stone foil**BASE LIMITED EDITION****Base Shanghai in**
metacrilato
trasparente o
fumé
Shanghai base
in transparent
or smoked grey
transparent
metacrylate

Shangai

ICONA DI STILE

STYLE ICON



SHANGAI
tavolo / table
Design by Riflessi Lab

Piano a botte in **marmo**
cristallo imperiale,
base **ottone spazzolato a**
mano.

Shaped top in imperial
crystal **marble**,
hand brushed brass base.





SHANGAI
tavolo / table
Design by Riflessi Lab

Piano a botte allungabile
in cristallo extrachiaro,
base **titanio spazzolato**
a mano.

Shaped extendable top
in extraclear glass, **hand**
brushed titanium base.



Tavolo fisso o allungabile con base composta da gambe inclinate e sovrapposte tra loro in maniera asimmetrica in alluminio verniciato o acciaio inox, rivestito in legno o pietra. Piano in legno bisellato o spessore 50 mm, ceramica, cristallo o marmo.

Fixed or extendable table with base comprising aluminium, asymmetrically superimposed, inclined legs painted or inox steel, wood or stone foil. Top in bevelled wood or thickness 50 mm, ceramic, marble or glass.

SHANGAI LIMITED EDITION

tavolo / table

Design by Riflessi Lab

Piano a botte in cristallo extrachiaro, base in metacrilato trasparente.
Shaped top in extra clear glass, transparent metacrylate base.

SHANGAI tavolo / table

Design by Riflessi Lab

Piano rotondo in cristallo extrachiaro, base in acciaio inox.
Round top in extra clear glass, inox steel base.

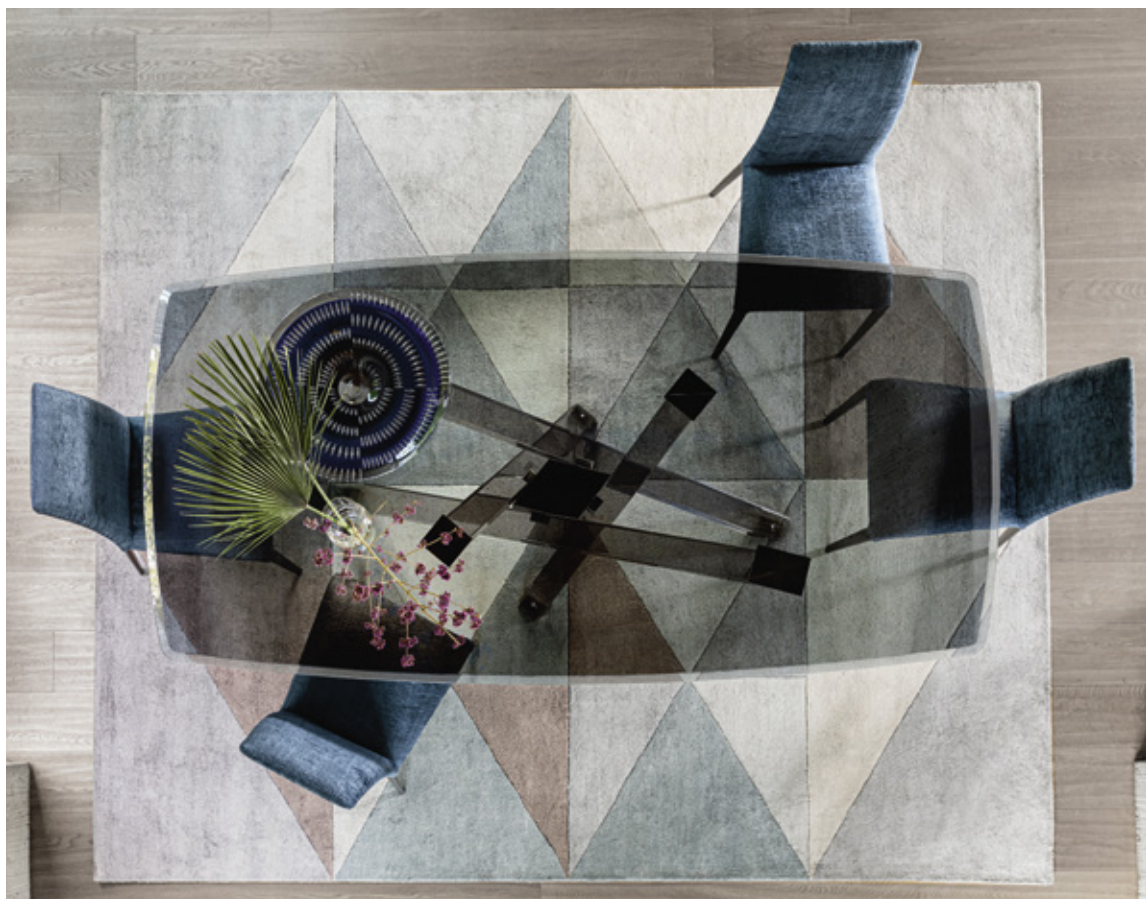
Round top in extra clear glass, inox steel base.





**SHANGHAI LIMITED
EDITION FUMÉ**
tavolo / table
Design by Riflessi Lab

Piano a botte bisellato
in cristallo trasparente
fumé, base in metacrilato
trasparente fumé.
Shaped bevelled top in
smoked grey transparent
glass, smoked grey
transparent methacrylate
base.





SHANGAI
tavolo / table

Design by Riflessi Lab

Piano rettangolare sp. 50
mm finitura rovere tinto
noce, base grafite.

Rectangular top th. 50
mm in oak dyed walnut,
graphite base.



SHANGAI
tavolo / table

Design by Riflessi Lab

Piano allungabile a botte
legno bisellato finitura
rovere coke, base **ottone**
spazzolato a mano.

Shaped extendable top in
bevelled wood coke finish,
hand brushed brass base.





SHANGAI
tavolo / table
Design by Riflessi Lab

Piano allungabile a botte sp. 50 mm finitura noce canaletto, base champagne perlato.
Shaped extendable top th. 50 mm. in american walnut, pearly champagne base.

SHANGAI
tavolo / table

Design by Riflessi Lab

Piano rotondo legno
bisellato e vassoio Lazy
Susan finitura rovere coke,
inserto in ceramica Noir
Desir lucido, base **ottone**
spazzolato a mano.

Round top in bevelled
wood and Lazy Susan tray
coke oak finish with glossy
Noir Desir ceramic insert,
hand brushed brass base.

SHANGAI
tavolo / table

Design by Riflessi Lab

Piano rotondo in ceramica
bianco Statuario opaco,
base grafite.

Round top in in matt white
Statuary ceramic, graphite
base.





SHANGAI
tavolo / table
Design by Riflessi Lab

Piano rotondo legno
bisellato finitura noce
canaletto con inserto
in ceramica Calacatta
oro lucido, base **ottone**
spazzolato a mano.

Round top in bevelled
wood American walnut
finish with glossy Calacatta
gold ceramic insert, **hand**
brushed brass base.



SHANGAI
tavolo / table
Design by Riflessi Lab

Piano a botte in ceramica
Sahara Noir lucido, base in
champagne perlato.
Shaped top in glossy
Sahara noir ceramic, pearly
champagne base.

SHANGAI
tavolo / table

Design by Riflessi Lab

Piano a botte in ceramica
Sodalite blu lucido, base
in champagne perlato.

Shaped top in glossy
Sodalite blu ceramic, pearly
champagne base.



SHANGAI
tavolo / table

Design by Riflessi Lab

Piano a botte allungabile
in ceramica Noir Desir
lucido, base in **ottone**
spazzolato a mano.

Shaped extendable top in
glossy Noir Desir ceramic,
hand brushed brass base.



Living

EQUILIBRIO FORMALE

FORMAL BALANCE



Tavolo fisso o allungabile con base caratterizzata da due gambe inclinate e sovrapposte fra loro in maniera asimmetrica in metallo verniciato. Top in legno bisellato o spessore 50 mm, in ceramica, cristallo o marmo.

Fixed or extendable table featuring a base comprising two inclined metal legs asymmetrically superimposed painted. Top in bevelled wood or thickness 50 mm, ceramic, glass or marble.





LIVING
tavolo / table
Design by Riflessi Lab

Piano a botte allungabile
in ceramica Calacatta oro
lucido, base in **ottone
spazzolato a mano**.
Shaped extendable top
in glossy Calacatta gold
ceramic, **hand brushed
brass** base.

LIVING

tavolo / table

Design by Riflessi Lab

Piano a botte in ceramica
Noir desir lucido, base
in **ottone spazzolato a
mano**.

Shaped top in glossy
Noir Desir ceramic, **hand
brushed brass** base.



LIVING**tavolo / table***Design by Riflessi Lab*

Piano a botte in marmo
naturale Patagonia, base
in **ottone spazzolato a
mano**.

Shaped top in natural
marble Patagonia, **hand
brushed brass** base.





LIVING
tavolo / table
Design by Riflessi Lab

Piano a botte legno
 bisellato finitura noce
 canaletto, base **ottone
 spazzolato a mano**.
 Shaped top in bevelled
 wood american walnut
 finish, hand **brushed brass**
base.

LIVING
tavolo / table
Design by Riflessi Lab

Piano rettangolare sp. 50
 mm finitura rovere tinto
 noce, base grafite.
 Rectangular top th. 50
 mm in oak dyed walnut,
 graphite base.





LIVING
tavolo / table
Design by Riflessi Lab

Piano a botte in cristallo
trasparente extra-chiaro,
base **cobalto spazzolato**
a mano.

Shaped top in extraclear
transparent glass, **hand**
brushed cobalt base.

LIVING

tavolo / table

Design by Riflessi Lab

Piano square allungabile
in ceramica bianco
Statuario lucido, base
grafite.

Extendable square top
in glossy White Statuary
ceramic, graphite base.





Pegaso

DESIGN LEGGERO

PEGASO, LIGHT DESIGN

Tavolo con base in metallo verniciato grafite. Piano in legno bisellato o spessore 50 mm, cristallo temperato o ceramica.

Table with graphite painted metal base. Top in bevelled wood or thickness 50 mm, ceramic or glass.



PEGASO tavolo / table

Design by Riflessi Lab

Piano a botte in ceramica
Noir desir lucido, base
grafite.

Shaped top in glossy Noir
Desir ceramic, graphite
base.



PEGASO**tavolo / table***Design by Riflessi Lab*

Piano a botte legno
bisellato finitura rovere
coke, base grafite.
Shaped top in bevelled
wood coke finish, graphite
base.

**PEGASO****tavolo / table***Design by Riflessi Lab*

Piano a botte in cristallo
extra-chiaro trasparente,
base grafite.
Shaped top in extraclear
transparent glass, graphite
base.



Atlante

ESALTAZIONE DEL LEGNO

WOOD EXALTED



Tavolo allungabile in legno con gambe a cavalletto e piano e allunghe con bordi bisellati sp. 30 mm in noce canaletto o rovere coke termotrattato. Meccanismo di estensione in alluminio anodizzato. Allunghe alloggiare all'interno.

Extending wooden table with trestle legs and 30mm thick top and extensions with bevelled edges, in American walnut or thermo-treated coke oak. Anodised aluminium extending mechanism. Extensions housed inside the table.





Atlantis

RIGORE ASSOLUTO

ABSOLUTE PRECISION

I VOLUMI QUADRATI E LINEARI DELLA STRUTTURA IN METALLO VALORIZZANO LA FINITURA SPAZZOLATA A MANO E IL PIANO IN CERAMICA.

THE LINEAR, SQUARE VOLUMES OF THE METAL STRUCTURE ENHANCE THE HAND-BRUSHED FINISH AND CERAMIC TOP.

ATLANTIS
tavolo / table
Design by Riflessi Lab

Piano e allunghe in ceramica Verde Borgogna opaco, gambe in **ottone spazzolato a mano**.

Top and extensions in matt Burgundy Green ceramic, **hand brushed brass** legs.



Tavolo allungabile con gambe a cavalletto in metallo verniciato e piano e allunghe in ceramica. Meccanismo di estensione in alluminio anodizzato. Allunghe alloggiate all'interno.

Extending table with trestle legs in painted metal and ceramic top and extensions. Anodised aluminium extending mechanism. Extensions housed inside the table.





Master

Tavolo con base in alluminio e acciaio verniciato. Piano in legno bisellato, cristallo trasparente temperato o ceramica.

Fixed table with aluminium and steel painted base. Top in beveled wood, tempered glass or ceramic.

MASTER tavolo / table

Design by Molteni/Baron Associati

Piano rettangolare in cristallo extrachiaro, base **ottone spazzolato a mano**.

Rectangular top in extra clear glass, **hand brushed brass** base.



MASTER
tavolo / table

*Design by Molteni/Baron
Associati*

Piano a botte in ceramica
Noir Desir lucido, base
ottone spazzolato a mano.
Shaped top in ceramic glossy
Noir Desir, **hand brushed
brass** base.



MASTER
tavolo / table

*Design by Molteni/Baron
Associati*

Piano a botte in rovere coke,
base **ottone spazzolato a
mano.**
Shaped top in bevelled wood
coke finish, **hand brushed
brass** base.



Treble



Tavolo con base in alluminio verniciato.
Piano in cristallo trasparente temperato
o ceramica.

Fixed table with aluminium painted base.
Top in toughened glass or ceramic.

TREBLE
tavolo / table
Design by Riflessi Lab

Piano rettangolare in
cristallo trasparente
extrachiario, base **ottone
spazzolato a mano**.
Rectangular top in extra
clear transparent glass,
hand brushed brass base.





TREBLE
tavolo / table
Design by Riflessi Lab

Piano rotondo in cristallo
trasparente fumé, base
grafite.
Round top in smoked grey
transparent glass, graphite
base.





TREBLE
tavolo / table
Design by Riflessi Lab

Piano a goccia in cristallo
extrachiaro, base **ottone
spazzolato a mano**.
Shaped top in extra clear
glass, **hand brushed brass**
base.

Cubric

CUBRIC tavolo / table

Design by Riflessi Lab

Piano in legno rettangolare sp. 50 mm in noce canaletto, basi in metallo verniciato **ottone spazzolato a mano** e cristallo extra-chiaro trasparente.

Rectangular wooden top th. 50 mm in American walnut, **hand brushed brass** and extraclear transparent glass bases.

CUBRIC tavolo / table *Design by Riflessi Lab*

Piano in legno rettangolare bisellato in rovere coke termotrattato, basi in metallo verniciato **ottone spazzolato a mano**.

Rectangular wooden top bevelled in thermos-treated coke oak, **hand brushed brass** bases.





Manhattan

QUADRATO, FISSO E ALLUNGABILE

SQUARE, FIXED AND EXTENDABLE



MANHATTAN tavolo / table

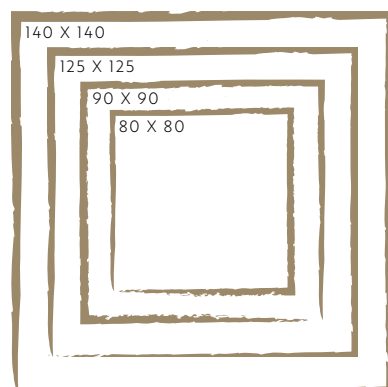
Design by Riflessi Lab

Piano quadrato allungabile
in ceramica Noir Desir
lucido, base **ottone**
spazzolato a mano.

Square extendable top in
ceramic glossy Noir Desir,
hand brushed brass
structure.

Sistema di tavoli fissi e allungabili con
struttura e gambe in alluminio verniciato
opaco. Piano in cristallo retroverniciato
opaco, o piano in ceramica.

Series of fixed and extending tables
with aluminium structure and legs matt
painted. Top in glass back painted matt, or
ceramic top.





MANHATTAN
tavolo / table

Design by Riflessi Lab

Piano quadrato allungabile
in ceramica Emperador
opaco, struttura antracite
opaco.

Square extendable top in
matt Emperador ceramic,
structure in matt anthracite.

in poche mosse da quadrato a rettangolare

FROM SQUARE TO RECTANGULAR IN JUST A FEW MOVES



MANHATTAN
tavolo / table

Design by Riflessi Lab

Piano quadrato allungabile
in ceramica Bianco Statuario
Bocciardato opaco, struttura
verniciata bianca.

Square extendable top in
matt bush hammered white
Statuary ceramic, matt white
structure.



Manhattan



RETTANGOLARE, FISSO E ALLUNGABILE

RECTANGULAR FIXED AND EXTENDABLE

LA STRUTTURA IN ALLUMINIO VERNICIATO FA DA CORNICE ALLA PREZIOSA SUPERFICIE IN CERAMICA O CRISTALLO.

THE FRAMEWORK IN ALUMINIUM PAINTED FRAMES
THE PRECIOUS CERAMIC OR GLASS SURFACE.

MANHATTAN tavolo / table

Design by Riflessi Lab

Piano rettangolare
allungabile in ceramica
Pietra di Savoia Antracite
bocciardata opaca,
struttura antracite opaco.
Rectangular extendable top
in matt bush hammered
anthracite Savoy Stone
ceramic, matt anthracite
structure.

MANHATTAN tavolo / table

Design by Riflessi Lab

Piano rettangolare
allungabile in cristallo
retro-verniciato tortora
opaco, struttura tortora
opaco.
Rectangular extendable
top in matt dove-grey
back-laquered glass, matt
dove-grey structure.




MANHATTAN
tavolo / table
Design by Riflessi Lab

Piano rettangolare
 allungabile in ceramica
 Bianco Statuario
 Bocciardato opaco,
 struttura antracite opaco.
 Rectangular extendable top
 in matt bush hammered
 White Statuary ceramic,
 matt anthracite structure.

Finiture disponibili per le gambe
 Finishes available for the legs

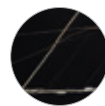
LACCATE OPACHE
 MATT LACQUERED

VERNICIATE
 PAINTED

**VERNICIATE
 SPAZZOLATE A MANO**
 PAINTED HAND
 BRUSHED

LACCATE COLORI RAL OPACO
 LACQUERED MATT RAL COLORS

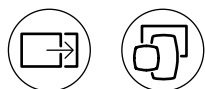
Finiture disponibili per il piano
 Finishes available for the top

**CRISTALLO
 RETRO-VERNICIATO**
 MATT BACK LACQUERED
 GLASS

CERAMICA
 CERAMIC

Sabino

DESIGN VERSATILE

ECLECTIC DESIGN



Tavolo fisso o allungabile con base a colonna centrale in metallo verniciato piegato a diamante. Top in ceramica.

Fixed or extendible table featuring a column base in metal folded in diamond shape and painted. Ceramic top.

SABINO tavolo / table

Design by Riflessi Lab

Piano square allungabile in ceramica Sahara Noir lucido, colonna in metallo verniciato **titanio spazzolato a mano** e base grafite.

Extendable square top in glossy Sahara Noir ceramic, column in metal painted **titanium hand brushed** and graphite base.





SABINO
tavolo / table
Design by Riflessi Lab

Piano a botte allungabile in ceramica Verde Borgogna lucido, colonna in metallo verniciato **ottone spazzolato a mano** e base champagne perlato.

Shaped extendable top in glossy Burgundy Green ceramic, column in metal painted **brass hand brushed** and pearly champagne base.

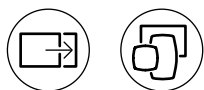


SABINO**tavolo / table***Design by Riflessi Lab*

Piano a botte in ceramica Sahara Noir bocciardato opaco. Colonna in metallo verniciato **ottone spazzolato a mano** e doppia base champagne perlato. Shaped top in bush-hammered matt Sahara Noir ceramic, columns in metal painted **brass hand brushed** and pearly champagne double base.



Tower



TOWER **tavolo / table**

Design by Riflessi Lab

Piano a botte allungabile
in ceramica Calacatta Oro
lucido, colonna in noce
canaletto, base verniciata
champagne perlato.

Shaped extendable top
in glossy Calacatta Gold
ceramic, American walnut
column, pearly champagne
base.

TOWER **tavolo / table** *Design by Riflessi Lab*

Piano rotondo in ceramica
Calacatta oro opaco,
colonna e base verniciate
champagne perlato.

Round top in matt
Calacatta gold ceramic,
column and base in pearly
champagne.



TOWER**tavolo / table***Design by Riflessi Lab*

Piano square in ceramica
Noir Desir opaco, colonna
in noce canaletto, base
verniciata champagne
perlato.

Square top in matt Noir
Desir ceramic, American
walnut column, pearly
champagne base.



Round

VERSATILE E FUNZIONALE

VERSATILE AND FUNCTIONAL

I TAVOLI RIFLESSI SI TRASFORMANO ATTRAVERSO PRATICI SISTEMI DI ESTENSIONE.

TABLES CHANGES THANKS TO A FUNCTIONAL EXTENSION SYSTEMS.



ROUND
tavolo / table
Design by Riflessi Lab

Piano rotondo
allungabile in ceramica
Bianco Statuario opaco
bocciardato, base grafite.
Extendable round top
in matt bush hammered
White Statuary ceramic,
graphite base.







Square

**UNA FORMA GEOMETRICA
NUOVA PER IL PIANO,
LEGGERMENTE ARROTONDATA.**

A NEW GEOMETRICAL SHAPE
FOR THIS SLIGHTLY ROUNDED
TOP.



SQUARE
tavolo / table
Design by Riflessi Lab

Piano square allungabile in ceramica
Noir Desir opaco, base in **ottone**
spazzolato a mano.
Extendable square top in matt Noir
Desir ceramic, **hand brushed brass**
base.

SQUARE
tavolo / table
Design by Riflessi Lab

Piano square allungabile
in legno bisellato finitura
rovere coke termotrattato,
base grafite.
Extendable square top in
bevelled wood, thermo-
treated coke oak finish,
graphite base.







CROSS
tavolo / table
Design by Riflessi Lab

Piano allungabile in
ceramica Noir Desir lucido,
struttura in frassino poro
aperto tinto coke.
Extendable top in glossy
Noir Desir ceramic,
structure in open pore ash
wood dyed coke.

Cross

Tavolo fisso o allungabile con struttura in legno frassino tinto. Piano in ceramica.

Fixed or extendable table with structure in dyed ash wood. Ceramic top.

CROSS

tavolo / table

Design by Riflessi Lab

Piano fisso in ceramica
Pietra Piasentina Taupe
Fiammata opaca, struttura
in frassino poro aperto
tinto coke.

Fixed top in matt flamed
Piasentina Taupe stone
ceramic, structure in open
pore ashwood dyed coke.



Toledo



TOLEDO
tavolo / table
Design by Riflessi Lab

Piano a botte in ceramica
Capraia lucida, base
grafite.
Shaped top in glossy
Capraia ceramic, graphite
base.



NEW PLANO
tavolo / table
Design by Riflessi Lab

Tavolo allungabile con piano e gambe
in cristallo extrachiaro temperato.
Meccanismi di estensione in alluminio
brillantato disponibili anche in laccato
lucido o opaco nei colori RAL.
Extending tables with toughened
extraclear glass top and legs. Polished
aluminium extending mechanism also
available glossy or matt lacquered in RAL
colours.



TOLEDO
tavolo / table
Design by Riflessi Lab

Piano rettangolare in
cristallo extrachiaro, base
grafite.
Rectangular top in
extraclear transparent glass,
graphite base.

New Plano





SEDIE

Qualità sartoriale made in italy

CHAIRS - TAILORED QUALITY MADE IN ITALY

Flessibilità e
Bellezza per il
tuo comfort
Flexibility and
beauty for your
comfort

IMBOTTITURE INDEFORMABILI resistenti alle pressioni e all'usura.

High density foam padding resistant to pressure and use.

SCHIENALI FLESSIBILI per agevolare l'appoggio della schiena.

Flexible seatbacks for a comfortable resting of the back.

FASCE ELASTICHE NELLE SEDUTE per renderle estremamente confortevoli.

Seats with elastic straps for a very comfortable seat.

COME PERSONALIZZARE LE SEDIE HOW TO CUSTOMISE CHAIRS

RIVESTIMENTI DISPONIBILI PER SEDUTA, SCHIENALE E GAMBE

Covers available for seat, backrest and legs



PELLE
LEATHER



SIMILPELLE
LEATHERETTE



TESSUTI
FABRICS



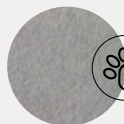
ECONABUK



VELLUTO
VELVET



CUOIO
HIDE

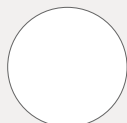


SMACCHIA



GAMBE IN METALLO VERNICIATO

Metal painted legs



Bianco white



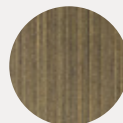
Grafite
graphite



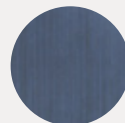
Champagne
perlato
Champagne
perlato



Oro rosa
Pink gold



Ottone brass



Cobalto
cobalt

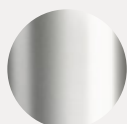


Titanio
titanium



GAMBE CROMO

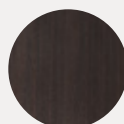
Chrome legs



Cromo
chromed

GAMBE LEGNO

Wood legs



Naturale, tinto
noce, tinto coke
o noce canaletto
Naturale,
Walnut, Coke or
American walnut

GAMBE RIVESTITE

Covered legs



Tessuto, pelle,
similpelle, econabuk,
velluto o cuoio
Fabric, leather,
leatherette, eco-
nubuck, velvet or hide

GAMBE LACCATE

Lacquered legs



Tutti i colori Ral
All Ral colours



INCREDIBILMENTE COMODE E AVVOLGENTI INCREDIBLY COMFORTABLE



LEGENDA LEGEND



Imbottitura in poliuretano flessibile stampato a freddo.
Flexible coldfoamed polyurethane.



Fasce elastiche all'interno della seduta.
Elastic webbing inside the seat.



Schienale flessibile.
Flexible backrest.



Scocca in tecnopolimero plastico.
Plastic technopolymer shell

PLUS E FUNZIONALITÀ PLUS AND FUNCTIONALITY



TESSUTI CERTIFICATI CERTIFIED FABRICS

Smacchia è uno speciale tessuto antimacchia, inoltre tutti i tessuti sono resistenti e duraturi.

Smacchia is a special stain-proof fabric; all our fabrics are strong and durable.

UNA PER COLORE ONE IN EACH COLOUR

Per le sedie con rivestimento in similpelle o tessuti è possibile ordinarne anche una per colore.

When ordering chairs upholstered in leatherette or fabrics, you can order one per colour.

RIVESTIMENTI BICOLORE BICOLOR COVER

Per molte sedie il rivestimento può essere realizzato anche in due colori.

Chair padding also in two colours for some models.

STANNO IN POCO SPAZIO TAKE UP MINIMUM SPACE

Molte delle nostre sedie sono impilabili
Many of our chairs are stackable

Sedie con imbottitura in poliuretano flessibile stampato a freddo

Chairs with cold moulded polyurethane foam upholstery



MEGHAN
Poltrona



CARMEN
Comfort



NOVA
Comfort



SOFIA
Comfort



CARMEN



GIADA



NOVA



NOVA
con braccioli



PERLA



SOFIA



SOFIA con
braccioli

Sedie con imbottitura in poliuretano espanso

Chairs with polyurethane foam upholstery



ANNA



AURORA



AURORA
con braccioli



GIÒ



LADY



MAVI



MAVI
con braccioli



VANESSA

Sedie in cuoio

Hide chairs



SARA

Sedie in Tecnopolimero Plastico

Plastic
Technopolymer
Chairs



LILIA

Sedie con gambe o struttura in legno Chairs with wooden legs or structure



ANGY Flex



BRIGITTE Flex



CHERIE Flex



MARGOT



MARGOT
con braccioli



GISELE

Sedie con schienale flessibile Chairs with flexible backrest



BRUNA Flex



DENISE Flex



EVA Flex



GAIA Flex



ISABEL Flex



LUNA Flex



MARTA Flex



NINA Flex



SLIM Flex



SONIA Flex



STELLA Flex



SVEVA Flex



VITTORIA
Flex

Sgabelli - stools



CARMEN



DENISE



GAIA



GIÒ



LILIA



MAVI



NOVA



PERLA



GISELE



SOFIA
con/senza
braccioli



SLIM



MEGHAN
poltrona / armchair
Design by Carlesi e Tonelli
Studio

Rivestimento in tessuto
Maiori I61, base **ottone**
spazzolato a mano.
Cover in Maiori I61 fabric,
base in **hand brushed**
brass.

MEGHAN

poltrona / armchair

*Design by Carlesi e Tonelli
Studio*

Rivestimento in tessuto
Smacchia R58, base
girevole nero opaco.

Cover in Smacchia R58
fabric, swivel base in matt
black.



Imbottitura in poliuretano flessibile
stampato a freddo.

Flexible coldfoamed polyurethane.



NOVA
sedia senza braccioli
/ chair without
armrests

Design by Carlesi e Tonelli Studio

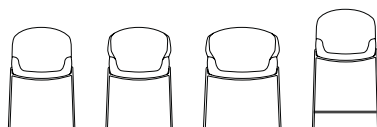
Rivestimento in tessuto
 Maiori I53, gambe in
ottone spazzolato a
mano.

Cover in Maiori I53 fabric,
 legs in **hand brushed**
brass.

NOVA
sgabello / stool
Design by Carlesi e Tonelli Studio

Rivestimento in velluto
 Amalfi A58, gambe in
ottone spazzolato a
mano.

Cover in Amalfi A58 velvet,
 legs in **hand brushed**
brass.



NOVA COMFORT
poltroncina / armchair

Design by Carlesi e Tonelli Studio

Rivestimento in tessuto
Maiori I57 e econabuk
trapunta TNO, gambe
in **ottone spazzolato a
mano**.

Cover in Maiori I57 fabric
and Econabuk quilted TNO,
legs in **hand brushed
brass**.



NOVA
sedia con braccioli
/ chair with armrests

Design by Carlesi e Tonelli Studio

Rivestimento in tessuto
Mire MI4, gambe in **ottone
spazzolato a mano**.

Cover in Mire MI4 fabric,
legs in **hand brushed
brass**.



CARMEN COMFORT
poltroncina / armchair
Design by Riflessi Lab

Rivestimento in tessuto
Maiori I65 e Econabuk
trapunta TN6, gambe
grafite.

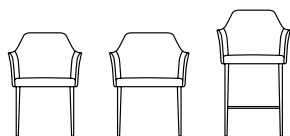
Cover in Maiori I65 fabric
and Econabuk quilted TN6,
legs in graphite.



CARMEN
sedia / chair

*Design by Stefano Sandonà
e Sabrina Bettini*

Rivestimento in velluto
Amalfi A62, gambe grafite.
Cover in Amalfi A62 velvet,
legs in graphite.



Imbottitura in poliuretano flessibile
stampato a freddo.
Flexible coldfoamed polyurethane.



Fasce elastiche all'interno della seduta.
Elastic webbing inside the seat.



CARMEN
sgabello / stool

*Design by Stefano Sandonà
e Sabrina Bettini*

Rivestimento in velluto
Amalfi A54, gambe grafite.
Cover in Amalfi A54 velvet,
legs in graphite.





SOFIA
sedia bassa senza
braccioli / low chair
without armrests
Design by Stefano Sandonà
e Sabrina Bettini

Rivestimento in tessuto
 Ischia H07, gambe **ottone**
spazzolato a mano.
 Cover in Ischia H07 fabric,
 legs in **hand brushed**
brass.



SOFIA
sedia alta senza
braccioli / high chair
without armrests
Design by Stefano Sandonà
e Sabrina Bettini

Rivestimento in tessuto
 Maiori I57, gambe **titanio**
spazzolato.
 Cover in Maiori I57 fabric,
 legs in **brushed titanium.**



Imbottitura in poliuretano flessibile
 stampato a freddo.
 Flexible coldfoamed polyurethane.

SOFIA
sgabello senza braccioli /
stool without armrests
Design by Stefano Sandonà e
Sabrina Bettini

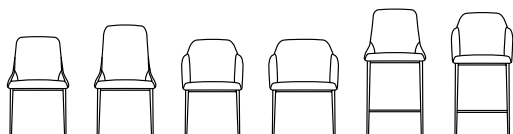
Rivestimento in econabuk
 Sahara N13, gambe grafite.
 Cover in Econabuk Sahara
 N13, legs in graphite.

PEGASO
tavolo snack / snack table
Design by Riflessi Lab

Piano rotondo in ceramica
 Noir desi lucido, base grafite.
 Round top in glossy Noir
 desir ceramic, graphite base.

SOFIA
sgabello con braccioli /
stool with armrests
Design by Stefano Sandonà
e Sabrina Bettini

Rivestimento in tessuto
 Ischia H02, gambe frassino
 tinto coke.
 Cover in Ischia H02 fabric,
 legs in coke stained
 ashwood.



SOFIA CITY STYLE
sedia bassa con
braccioli / low chair
with armrests
Design by Riflessi Lab



Sedia City Milano: seduta Amalfi A61, schienale raso Citymilano, gambe grafite.

City Milano chair: Amalfi seat A61, Citymilano satin backrest, graphite legs.

Sedia City Napoli: seduta Amalfi A58, schienale raso Citynapoli, **gambe cobalto spazzolato a mano.**

City Napoli chair: Amalfi A58 seat with Citynapoli satin backrest, hand brushed cobalt legs.

Sedia City Roma: seduta Amalfi A81, schienale raso Cityroma, gambe **ottone spazzolato a mano.**

City Roma chair: Amalfi seat A81 Cityroma satin backrest, hand brushed brass legs.

SOFIA
sedia bassa con
braccioli / low chair
with armrests

Design by Stefano Sandonà e Sabrina Bettini

Rivestimento interno in velluto Amalfi A96, schienale in raso RS4, gambe grafite.

Cover for backrest in RS4 satin and seat in Amalfi velvet A96, legs in graphite.



Imbottitura in poliuretano flessibile stampato a freddo.
 Flexible coldfoamed polyurethane.

SOFIA COMFORT
poltroncina / armchair

Design by Riflessi Lab

Rivestimento in econabuk
Sahara N01, gambe
ottone spazzolato a
mano.

Cover in Econabuk Sahara
N01, legs in **hand brushed**
brass.



SOFIA COMFORT
poltroncina / armchair

Design by Riflessi Lab

Rivestimento in velluto
Amalfi A96, base girevole
ottone.

Cover in Amalfi A96 velvet,
swivel base in brass.



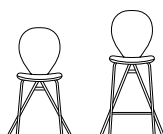


PERLA

sedia / chair

*Design by Stefano Sandonà
e Sabrina Bettini*

Rivestimenti in velluto
Amalfi A58, gambe grafite.
Cover in Amalfi A58 velvet,
legs in graphite



PERLA

sgabello / stool

*Design by Stefano Sandonà
e Sabrina Bettini*

Rivestimento in velluto
Amalfi A53, gambe grafite.
Cover in Amalfi A53 velvet,
legs in graphite.



PERLA

sedia / chair

*Design by Stefano Sandonà
e Sabrina Bettini*

Rivestimenti in velluto
Amalfi A81, gambe
champagne perlato.
Cover in Amalfi A81 velvet,
legs in pearly champagne.



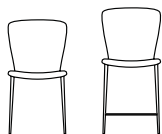
GIÒ

sedia / chair

Design by Riflessi Lab

Rivestimento in velluto
Positano W51, gambe
ottone spazzolato a
mano.

Cover in Positano W51
velvet, legs in **hand**
brushed brass.



Scocca in tecnopolimero plastico.
Plastic technopolymer shell

GIÒ

sedia / chair

Design by Riflessi Lab

Rivestimento in Ischia H01
gambe in noce canaletto.
Cover in Ischia H01 fabric,
legs in american walnut.





GIÒ
sgabello / stool
Design by Riflessi Lab

Rivestimento in velluto
 Amalfi A51, gambe
 frassino tinto coke.
 Cover in Amalfi A51 velvet,
 legs in coke stained
 ashwood.

LILIA

sedia / chair

Design by Stefano Sandonà
e Sabrina Bettini

Scocca tortora, bianco,
grafite, verde salvia,
amaranto e senape.
gambe bianco o grafite.
Shell in dove grey,
white, graphite, sauge
green, amaranth and
mustard, white or
graphite legs.

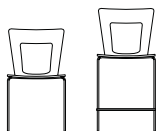


**GOOD
DESIGN
AWARD
2016**

OF CHICAGO
ATHENAEUM :
MUSEUM OF
ARCHITECTURE
AND DESIGN



Scocca in tecnopolimero plastico.
Plastic technopolymer shell



LILIA

sgabello / stool

Design by Stefano Sandonà
e Sabrina Bettini

Scocca senape e verde
salvia, gambe oro rosa e
grafite.
Shell in mustard and sauge
green, legs in pink gold
and graphite.

GIADA

sedia / chair

Design by Riflessi Lab

Rivestimento in velluto
Amalfi A95, base in
champagne perlato.
Cover in Amalfi A95 velvet,
base in pearly champagne.

Rivestimento in tessuto
Bouclé X11, base in
**titanio spazzolato a
mano.**
Cover in Bouclé fabric X11,
base in **hand brushed
titanium.**



Imbottitura in poliuretano flessibile stampato a freddo.
Flexible coldfoamed polyurethane.



ANGY FLEX
sedia con schienale
basso / chair with low
backrest

Design by Riflessi Lab

Rivestimento in pelle
P55, gambe frassino tinto
noce.

Cover in P55 leather,
legs in walnut stained
ashwood.

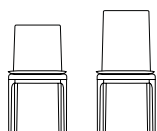


Schienale flessibile.
Flexible backrest.

CHERIE FLEX
sedia con schienale
alto / chair with high
backrest

Design by Riflessi Lab

Rivestimento in velluto
 Amalfi A51, gambe
 frassino tinto noce.
 Cover in Amalfi A51 velvet,
 legs in walnut stained
 ashwood.

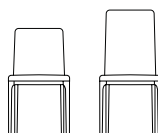


Schienale flessibile.
 Flexible backrest.

BRIGITTE FLEX
sedia con schienale
alto / chair with high
backrest

Design by Riflessi Lab

Rivestimento in velluto
 Amalfi A59; gambe
 frassino tinto coke.
 Cover in Amalfi A59 velvet;
 legs in coke stained
 ashwood.



Schienale flessibile.
 Flexible backrest.



MARGOT
sedia con e senza
braccioli

/ chair with and
without armrests

Design by Riflessi Lab

Rivestimento in econabuk Sahara N01 con schienale trapuntato in tinta, gambe frassino tinto coke.

Cover in Econabuk Sahara N01 with quilted backrest in the same colour, legs in coke stained ashwood.

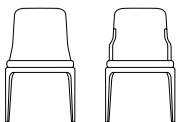


MARGOT
sedia con braccioli
/ chair with armrests

Design by Riflessi Lab

Rivestimento in econabuk Sahara N13, gambe frassino tinto noce.

Cover in Econabuk Sahara N13 legs in walnut stained ashwood.



Fasce elastiche all'interno della seduta.
Elastic webbing inside the seat.

GISELE
sedia / chair

Design by Riflessi Lab

Struttura in frassino
tinto coke, rivestimento
seduta tessuto Tailor T42,
schienale Amalfi A52.

Structure in coke stained
ashwood, seat cover in
Tailor T42 fabric, backrest
cover in Amalfi A52 fabric.



GISELE SGABELLO
sedia / chair

Design by Riflessi Lab

Struttura in frassino
tinto coke, rivestimento
seduta tessuto Tailor T42,
schienale Amalfi A55.

Structure in coke stained
ashwood, seat cover in
Tailor T42 fabric, backrest
cover in Amalfi A55 fabric.



GISELE
sedia / chair

Design by Riflessi Lab

Struttura in noce
canaletto, rivestimento
seduta tessuto Tailor T42,
schienale Amalfi A52.

Structure in American
walnut, seat cover in Tailor
T42 fabric, backrest in
Amalfi A52 fabric.



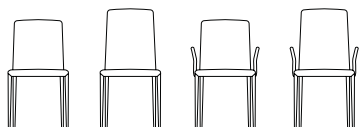
AURORA
sedia alta con braccioli
/ high chair with
armrests

Design by Riflessi Lab

Rivestimento in tessuto
 Tailor T43, gambe **ottone**
spazzolato a mano.
 Cover in Tailor T43 fabric,
 legs in **hand brushed**
brass.

AURORA
sedia bassa con e senza
braccioli
/ low chair with and
without armrests

Design by Riflessi Lab



AURORA
sedia alta senza braccioli /
high chair without armrests
Design by Riflessi Lab

Rivestimento in tessuto
 Tailor T77, gambe **ottone**
spazzolato a mano.
 Cover in Tailor T77 fabric, legs in
hand brushed brass.

SVEVA FLEX
sedia con schienale
alto / chair with high
backrest

Design by Riflessi Lab

Rivestimento in tessuto
 Tailor T60, gambe **cobalto**
spazzolato a mano.
 Cover in Tailor T60 fabric,
 legs in **hand brushed**
cobalt.



Schienale flessibile e cuscino
 imbottito.
 Flexible backrest and padded cushion.

NINA FLEX
sedia /chair

Design by Riflessi Lab

Rivestimento in Econabuk
Sahara N01, gambe
ottone spazzolato a
mano.

Cover in Econabuk Sahara
N01, legs in hand brushed
brass.



ISABEL FLEX
sedia / chair

Design by Riflessi Lab

Rivestimento in econabuk Sahara N01 con cuscino trapuntato in tinta. Gambe **ottone spazzolato a mano**.

Cover in Econabuk Sahara N01 with quilted cushion in the same colour.

Legs in hand brushed brass.



Schienale flessibile.
Flexible backrest.



Fasce elastiche all'interno della seduta.
Elastic webbing inside the seat.



MARTA FLEX
sedia / chair
Design by Riflessi Lab

Rivestimento in tessuto Smacchia R51, rifinita con cordino a contrasto, in similpelle B07, gambe grafite.

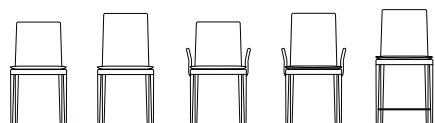
Cover in Smacchia R51 fabric, finished with contrasting cord trim in B07 leatherette, legs in graphite.

MAVI
sedia bassa con
braccioli / low chair
with armrests

Design by Riflessi Lab

Rivestimento in tessuto
Ischia H02, gambe **ottone**
spazzolato a mano.

Cover in Ischia H02 fabric,
legs in **hand brushed**
brass.



Schienale flessibile.
Flexible backrest.

MAVI
sedia alta senza
braccioli / high chair
without armrests

Design by Riflessi Lab

Rivestimento in velluto
Amalfi A55, gambe grafitate.

Cover in Amalfi A55 velvet,
legs in graphite.





BRUNA FLEX
sedia / chair
Design by Riflessi Lab

Rivestimento in econabuk
Sahara N04. Gambe rivestite.
Cover in Econabuk Sahara N04.
Covered legs.



Schienale flessibile.
Flexible backrest.

VITTORIA FLEX
sedia / chair
Design by Riflessi Lab

Rivestimento in velluto
 Amalfi A82, gambe grafite.
 Cover in Amalfi A82 velvet,
 graphite legs.



VITTORIA FLEX
sedia / chair
Design by Riflessi Lab

Rivestimento in velluto
 Amalfi A55.
 Cover in Amalfi A55 velvet.



Schienale flessibile.
 Flexible backrest.

STELLA FLEX

sedia / chair

Design by Stefano Sandonà
e Sabrina Bettini

Seduta e schienale con fasce elastiche; schienale flessibile. Rifinita con cordino a contrasto o in tinta oppure con cucitura a due aghi in tinta. Dotata del sistema cover. Sfoderabile. Impilabile. Steel frame, seat and backrest with elastic webbing; flexible backrest. Finished with contrasting cord trim or in the same colour or with two needle stitching in the same colour. Fitted with cover system. With removable cover. Stackable.



Schienale flessibile.
Flexible backrest.

SLIM FLEX

sedia / chair

Design by Riflessi Lab

Rivestimento in similpelle Urban B17, gambe rivestite e gambe grafite.

Cover in Urban B17 leatherette, covered legs and legs in graphite.



GAIA FLEX
sedia / chair

Design by Riflessi Lab

Rivestimento in tessuto
Tailor T84, T60 e T65 ,
gambe rivestite.

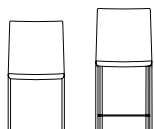
Cover in Tailor T84, T60 and
T65 fabric, covered legs.

GAIA FLEX
sgabello / stool

Design by Riflessi Lab

Rivestimento in tessuto
Mire MI1, gambe grafite.

Cover in Mire MI1 fabric,
legs in graphite.



Schienale flessibile.
Flexible backrest.



Fasce elastiche all'interno
della seduta.
Elastic webbing inside the seat.



DENISE FLEX
sgabello / stool
Design by Riflessi Lab

Rivestimento in tessuto
Mire MI6, gambe grafite.
Cover in Mire MI6 fabric,
graphite legs.



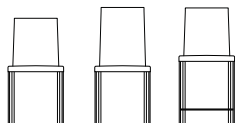
LUNA FLEX
sedia / chair
Design by Riflessi Lab

Rivestimento in velluto
Amalfi A55, gambe
rivestite.
Cover in Amalfi A55 velvet,
covered legs.



DENISE FLEX
**sedia con schienale
alto / chair with high
backrest**
Design by Riflessi Lab

Rivestimento in pelle P55,
gambe cromo.
Cover in leather P55,
chromed legs.



Schienale flessibile.
Flexible backrest.





SARA
sedia / chair
Design by Riflessi Lab

Rivestimento in cuoio F45.
Cover in F45 hide.

CONSOLLE

Per fare un tavolo ci vuole una consolle

CONSOLE - IT TAKES A CONSOLE TO MAKE A TABLE



P300

LA CONSOLLE È RIVOLUZIONARIA PERCHÈ SI TRASFORMA IN UN LUNGO TAVOLO GRAZIE AD UNO SPECIALE MECCANISMO A SCOMPARSA.

IS A REVOLUTIONARY CONSOLE WHICH TRANSFORMS IN A CONFORTABLE DINING TABLE THANKS TO A SPECIAL DISAPPEARANCE MECHANISM.

P300
consolle / console
Design by Riflessi Lab

Struttura in rovere coke.
Structure in coke oak.

Un grande tavolo
racchiuso in soli 50 cm di
consolle.
Large table housed in a
console of just 50 cm.

12 posti a tavola in poche mosse

JUST A FEW MOVES PROVIDE 12 PLACES AT TABLE.



Consolle fissa o allungabile in legno. Esclusivo meccanismo brevettato per il funzionamento delle gambe centrali a scomparsa (per la versione a 3 m).
Fixed or extending console in wood. Exclusive patented mechanism for the retractable centre legs (for the L 3 m version).



Manhattan

Sistema di console fisse e allungabili con struttura e gambe in alluminio verniciato opaco. Piani in cristallo retrolaccato opaco o ceramica.

Fixed or extending console system with aluminium structure and legs matt painted. Tops in matt back laquered glass or ceramic.

MANHATTAN
console / console
Design by Riflessi Lab

Piano ceramica Bianco

Statuario opaco

Bocciardato, struttura
 antracite opaco.

Top in matt Bush

Hammered White Statuary
 ceramic, structure in matt
 anthracite.



Cross

Consolle fissa o allungabile in frassino tinto a poro aperto. Piano in cristallo specchiante bronzato o fumé o in ceramica.

Fixed or extending console with structure ash wood stained open pore. Tops in bronzed or smoked grey mirror effect glass or ceramic.

CROSS console / console *Design by Riflessi Lab*

Piano in ceramica Bianco Statuario opaco Bocciardato, struttura in frassino tinto noce poro aperto.

Top in matt Bush Hammered White Statuary ceramic, structure in ash wood stained american walnut open pore.



CROSS console / console *Design by Riflessi Lab*

Piano in ceramica Bianco Statuario opaco Bocciardato, struttura in frassino tinto bianco poro aperto.

Top in matt Bush Hammered White Statuary ceramic, structure in ash wood stained white open pore.



CROSS console / console *Design by Riflessi Lab*

Piano in ceramica Noir Desir lucido, struttura in frassino tinto coke poro aperto.

Ceramic top glossy Noir Desir, structure in ashwood stained coke open pore.



Shangai

Consolle allungabile con base in alluminio verniciato. Piano in legno.

Extending console with aluminium base painted. Wooden top.

SHANGAI
console / console
Design by Riflessi Lab

Piano in rovere tinto
 noce, base grafite.
 Top in oak dyed walnut,
 graphite base.



Corner

Consolle fissa o allungabile con struttura in metallo verniciato. Piano in cristallo specchiante bronzato o fumé o in ceramica.

Fixed or extending console with structure laquered or painted metal. Tops in bronzed or smoked grey mirror effect glass or ceramic.



**CORNER
consolle / console**
Design by Riflessi Lab

Piano ceramica Calacatta Oro lucido. Struttura **ottone spazzolato a mano**.

Ceramic top glossy Calacatta Gold, structure in **hand brushed brass**.

**CORNER
consolle / console**
Design by Riflessi Lab

Piano ceramica Calacatta Oro lucido. Struttura champagne perlato.

Ceramic top glossy Calacatta Gold, pearly champagne structure.





CORNER
console / console
Design by Riflessi Lab

Piano ceramica Calacatta
 Oro lucido. Struttura
 champagne perlato.
 Ceramic top glossy
 Calacatta Gold, pearly
 champagne structure.

Pegaso



PEGASO
console / console
Design by Riflessi Lab

Piano in ceramica
Bianco Statuario opaco
Bocciardato, base grafite.
Top in matt Bush
Hammered White Statuary
ceramic, graphite base.

LUXURY
console / console
Design by Riflessi Lab

Piano in rovere tinto
 coke poro aperto, gambe
ottone spazzolato a
mano.

Top in oak dyed coke open
 pore, **hand brushed brass**
 legs.

Luxury



Saphiria

Consolle in cristallo curvato trasparente o fumé.
Ripiano in cristallo o ceramica.
Console in curved transparent or smoked grey
glass. Shelf in glass or ceramic.

SAPHIRIA **consolle / console** *Design by Riflessi Lab*

Struttura in cristallo
fumé. Ripiano in ceramica
Bianco Statuario opaco
Bocciardato.
Smoked grey glass
structure. Shelf in matt Bush
Hammered White Statuary
ceramic.

SAPHIRIA **consolle / console** *Design by Riflessi Lab*

Struttura in cristallo fumé.
Ripiano in ceramica Noir
Desir.
Smoked grey glass
structure. Shelf in Noir Desir
ceramic.





SAPHIRIA
console / console
Design by Riflessi Lab

Struttura in cristallo
 trasparente.
 Structure in transparent
 glass.

Living

Consolle con base caratterizzata da due gambe inclinate e sovrapposte tra loro in maniera asimmetrica in metallo verniciato. Piano in legno, cristallo extrachiaro o ceramica.

Console featuring a base with two inclined metal legs asymmetrically superimposed painted. Top in wood, toughened extraclear glass or ceramic.

LIVING
consolle / console
Design by Riflessi Lab

Piano in ceramica Noir Desir lucido, base **ottone spazzolato a mano**.

Top in glossy Noir Desir ceramic, base in **hand brushed brass**.



Shangai

Consolle con base caratterizzata da gambe inclinate e sovrapposte tra loro in maniera asimmetrica in alluminio verniciato o acciaio inox. Piano in legno, cristallo extrachiaro temperato o ceramica.

Console featuring a base with two aluminium legs asymmetrically superimposed painted or inox steel. Top in wood, extraclear toughened glass or ceramic.

SHANGAI
console / console
Design by Riflessi Lab

Piano cristallo, base in acciaio inox.
Glass top, inox steel base.



SHANGAI
console / console
Design by Riflessi Lab

Piano in noce canaletto,
base grafite.
Top in american walnut,
graphite base.



MADIE

Lavorazioni artigianali, design esclusivo

SIDEBOARDS - SKILLED CRAFTSMANSHIP AND EXCLUSIVE DESIGN

Materiali
eccellenti per
prestazione ed
eleganza.
Excellent
materials provide
performance and
elegance.

Ogni materiale è scelto e lavorato manualmente in base alle sue proprietà tecnologiche: malleabilità, duttilità, fusibilità, permettono di plasmare forme irregolari e sinuose oppure geometrie sfaccettate. Nelle ampie dimensioni gli effetti sono sorprendenti.

Each material is selected and hand-worked according to its technological qualities: suppleness, pliancy and fusibility make possible irregular, sinuous shapes or faceted geometries. Amazing effects are produced even on large mirrors, which remain light and easy to handle.



MADIE SIDEBOARDS



CUBRIC



C-WOOD



CROSS



ONDA



OLA



DOLCE VITA



SEGNO



SOLARIS



ESSENZIA



PICASSO



LIBRERIA FREEWALL

Cubric

SUPERFICI DIAMANTATE

DIAMOND SURFACES

A MODULARE IL
VOLUME È L'ACCIAIO
PIEGATO A DIAMANTE
CHE AVVOLGE ANTE E
FIANCHI.

THE STEEL ALL AROUND
THE SIDEBOARD IS
HANDCRAFTED TO A
DIAMOND SHAPE.



CUBRIC

**Madia 4 ante / 4 doors
sideboard**

Design by Riflessi Lab

Ante e fianchi in metallo
verniciato **ottone spazzolato
a mano**. Top in ceramica Noir
Desir lucido. Piedi Air in metallo
verniciato grafite.

Doors and sides in hand **brushed
brass painted metal**. Top in
glossy Noir Desir ceramic. Air feet
in graphite painted metal.

Cubric è in MDF con taglio a 45°, ante e fianchi sono in metallo piegato artigianalmente a diamante. Interni e schienale in noce canaletto, con ripiani interni in cristallo.

Apertura push-pull.

Cubric is in MDF with 45° cut. Doors and sides in mirror effect diamond shaped folded metal. American walnut interior and back panel with internal glass shelves. Push-pull opening system.

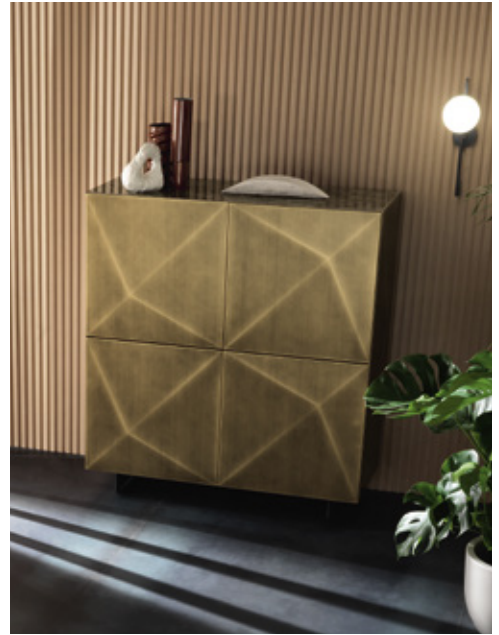
CUBRIC

quadrotto 4 ante e madia 3 ante / 4 doors square and 3 doors sideboard

Design by Riflessi Lab

Ante e fianchi in metallo verniciato **ottone spazzolato a mano**. Top in rovere coke termotrattato e in ceramica Emperador lucido. Piedi Air grafite.

Doors and sides in **hand brushed brass painted** metal. Top in thermo-treated coke oak and glossy Emperador ceramic. Air feet in graphite.





CUBRIC
quadrotto 4 ante / 4 doors square
Design by Riflessi Lab

Ante e fianchi in metallo verniciato **titanio spazzolato a mano**. Top in ceramica Bianco Statuario opaco Bocciardato. Doors and sides in **hand brushed titanium painted metal**. Top in matt Bush Hammered White Statuary ceramic.

CUBRIC

**quadrotto 4 ante e
madia 4 ante / 4 doors
square and 4 doors
sideboard**

Design by Riflessi Lab

Top in ceramica Pietra
Savoia antracite, ante e
fianchi in metallo verniciato
**cobalto spazzolato a
mano**. Interni in noce
canaletto, cassetto interno
finitura tortora effetto pelle.
Piedi Air in acciaio verniciato
grafite.

Top in anthracite Savoy
Stone ceramic, doors and
sides in **cobalt painted,
hand-brushed** metal. Inside
in American walnut, internal
drawer in leather effect dove
grey finish. Air feet in graphite
painted steel.



Dolce Vita

UNA SUPERFICIE TRIDIMENSIONALE

A THREE-DIMENSIONAL SURFACE

Il calore del legno noce canaletto è ammorbidito da una suggestiva superficie tridimensionale a onde orizzontali, risultato ottenuto grazie a una particolare tecnica di lavorazione che crea un movimento sinuoso e moderno. Può essere tutta in legno o dotata di top in ceramica o di un sontuoso top in marmo.

Warm American walnut is softened by a surface featuring three-dimensional horizontal waves, achieved by a special technique that creates the effect of modern sinuous movement. Available entirely in wood, with a ceramic top or luxurious marble top.





DOLCE VITA
madia 4 ante / 4 doors
sideboard

Design by Riflessi Lab

Top in ceramica Calacatta
 oro lucido, ante e fianchi
 in noce canaletto, piedi Air
 grafite.

Top in gloss Calacatta gold
 ceramic, doors and sides in
 American walnut, air feet
 in graphite painted steel.

C-Wood

IL LEGNO È PLASMATO CON MAESTRIA

MASTERFULLY SHAPED WOOD

Madia in legno con ante e fianchi modellati a diamante. Il raccordo tra ante, top e fianchi è con taglio a 45 gradi. Interni e schienale in noce canaletto, con ripiani interni in cristallo. Apertura push-pull.

Sideboard with doors and sides folded into a diamond shape. Doors, top and sides with 45 degree edges. American walnut interior and back panel with internal glass shelves. Push-pull opening system.

C-WOOD
madia 3 ante
/ 3 doors sideboard
Design by Riflessi Lab

Ante e fianchi in noce canaletto. Top in ceramica Bianco Statuario Bocciardato opaco. Piedi Air in acciaio verniciato grafite.

Doors and sides in american walnut. Top in matt Bush Hammered White Statuary ceramic. Air feet in graphite painted steel.





C-WOOD
quadrotto 4 ante
/ 4 doors square

Design by Riflessi Lab

Ante e fianchi in rovere coke termotrattato. Top in ceramica Emperador lucido. Piedi Air in acciaio verniciato grafite.
 Doors and sides in thermo-treated coke oak. Top in glossy Emperador ceramic. Air feet in graphite painted steel.



C-WOOD
madia 4 ante
/ 4 doors sideboard

Design by Riflessi Lab

Ante e fianchi in rovere coke termotrattato. Top in ceramica Noir Desir lucido. Interni in noce Canaletto con cassetto finitura tortora effetto pelle. Piedi Air in acciaio verniciato grafite.
 Doors and sides in Thermo-treated coke oak. Top in glossy Noir Desir ceramic. American walnut interior with drawer in leather effect dove grey finish. Air feet in graphite painted steel.



Segno

Madia a 3 ante con superficie a vista incisa e raccordata. Ante, top e fianchi hanno i bordi con taglio a 45°. Ripiani interni in cristallo. Apertura sistema push-pull.

Sideboard with three doors and engraved, connected surface. Doors, tops and sides have 45° cut edges. Internal glass shelves. Push-pull opening system.

SEGNO
madia 3 ante
/ 3 doors sideboard
Design by Riflessi Lab

Laccata grigio grafite RAL 7024 opaco. Piedi Air in acciaio.

Matt graphite gray RAL 7024 lacquered. Steel Air feet.



Solaris

Madia a 3 ante con superficie a vista incisa e raccordata. Ante, top e fianchi hanno i bordi con taglio a 45°. L'apertura con il pratico sistema push-pull ne facilita l'utilizzo.

Three doors sideboard with engraves and lacquered surfaces. Their doors and edges are cut at 45° and are opened and closed using a pull system.

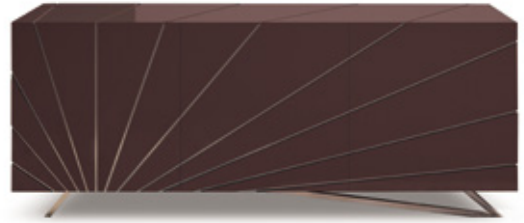
SOLARIS
madia 3 ante
/ 3 doors sideboard

Design by Riflessi Lab

Laccata grafite Ral 7024 lucido.

Incisioni e base in oro rosa.

Glossy graphite gray RAL 7024 lacquered. Pink gold engraving and base.



le madie laccate

**POSSONO VESTIRE TUTTE LE TINTI DELLA SCALA RAL,
 IN FINITURA OPACA O LUCIDA**

LACQUERED SIDEBOARDS COME IN ALL RAL
 COLOURS, WITH MATT OR GLOSSY FINISH



Cross

UNA FORMA FLUIDA IN LEGNO MASSELLO

A FLUID SHAPE IN SOLID WOOD

Madia in rovere coke termotrattato o noce canaletto, con piano a filo in ceramica o cristallo. Ripiani interni in cristallo. Angoli smussati. Apertura push-pull.

Sideboard in thermo-treated coke oak or American walnut, with flush ceramic or glass top. Internal glass shelves. Rounded edges. Push-pull opening system.

CROSS

Madia 4 ante / 4 doors sideboard

Design by Riflessi Lab

Ante e fianchi in noce canaletto. Top in marmo cristallo imperiale.

Doors and sides in american walnut. Top in imperial crystal marble.



Ola

Madia con ante e fianchi con motivo ondulato a rilievo. Ante, top e fianchi hanno i bordi con taglio a 45°. Ripiani interni in cristallo. L'apertura con il pratico sistema push-pull ne facilita l'utilizzo.

Sideboard with doors and sides featuring a wavy relief pattern. Doors, top and sides have 45° cut edges. Internal glass shelves. The practical push-pull system makes for ease of use.

OLA
madia 3 ante
/ 3 doors sideboard
Design by Riflessi Lab

Verniciata **titanio**
spazzolato a mano. Piedi
 Air in grafite.
 Painted in **hand brushed**
titanium. Air feet in
 graphite painted steel.



Onda

Madia alta o bassa con ante e fianchi con motivo ondulato verticale a rilievo. Ante, top e fianchi hanno i bordi con taglio a 45°. Ripiani interni in cristallo. L'apertura con il pratico sistema push-pull ne facilita l'utilizzo.

High or low sideboard with doors and sides featuring a vertical wavy relief pattern. Doors, top and sides have 45° cut edges. Internal glass shelves. The practical push-pull system makes for ease of use.

ONDA
madia 3 ante
/ 3 doors sideboard
Design by Riflessi Lab

Laccata Ral 3005 opaco.
Piedi Air grafite.
Matt RAL 3005 lacquered.
Air feet graphite.





Essenzia Art

Con la resina creiamo su Essenzia un decoro artistico unico ed irripetibile.

We create a unique and inimitative artistic décor with resin on Essenzia.

ESSENZIA ART Madia 3 ante / 3 doors sideboard

Design by Riflessi Lab

Laccata RAL 7024 opaco.
Finitura interna laccato RAL
7024 opaco. Piedi Air in acciaio
verniciato grafite.

Matt RAL 7024 lacquered. Inside
in matt RAL 7024 lacquered. Air
feet in graphite painted steel.



ESSENZIA ART madia 3 ante / 3 doors sideboard

Design by Riflessi Lab

Laccata bianco opaco.
Finitura interna laccato
bianco opaco. Piedi Air in
plexiglass.

Matt white lacquered. Inside in
matt white lacquered. Air feet
in plexiglass.

Picasso

MADIA CON ANTE PERSONALIZZABILI IN 10 DECLINAZIONI

SIDEBORD WITH TEN CUSTOMISATION OPPORTUNITIES.

PICASSO
madia 4 ante
/ 4 doors sideboard
Design by Riflessi Lab

Struttura in rovere coke
termotrattato con ante
Tibetana verniciata e
spazzolata. Zoccolo
brunito.

Structure in thermo-treated
coke oak with brushed and
painted Tibetana door.
Burnished plinth.



PICASSO
madia 4 ante
/ 4 doors sideboard
Design by Rifflessi Lab

Struttura in rovere coke
 con ante Ceramica Noir
 Desir lucido. Zoccolo
 brunito.

Structure in coke oak with
 glossy Noir Desir ceramic
 doors. Burnished plinth.

PICASSO
madia 4 ante
/ 4 doors sideboard
Design by Rifflessi Lab

Madia con ante Simple in
 rovere coke termotrattato.
 Zoccolo brunito.

Sideboard with Simple
 doors in thermo-treated
 coke oak. Burnished plinth.

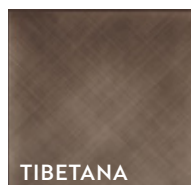
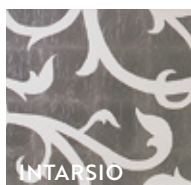
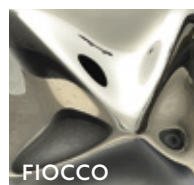
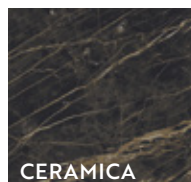
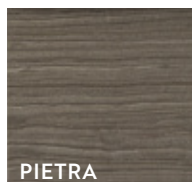
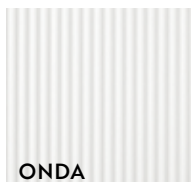


Le ante di Picasso

COMBINANDO STRUTTURA, ANTE, BASAMENTI E FINITURE, SI OTTENGONO INFINITE PERSONALIZZAZIONI.

COMBINING BODY, DOORS, BASES AND FINISHES ACHIEVES INFINITE CUSTOMISATION.

Ante Doors



Solo per / only for **P2**

PICASSO madia 4 ante / 4 doors sideboard *Design by Riflessi Lab*

Struttura in rovere tinto bianco poro aperto con ante Mito in acciaio martellato. Piedi Air in acciaio.

Structure in open pore white stained oak with Mito hammered steel doors. Steel Air feet.





PICASSO
madia 4 ante
/ 4 doors sideboard
Design by Riflessi Lab

Struttura in rovere coke
 termotrattato con
 ante Fiocco in cristallo
 specchiante bronzato. .
 Zoccolo brunito.
 Structure in thermo-treated
 coke oak with
 Fiocco doors in bronzed
 mirror effect glass.
 Burnished plinth.

Freewall

SISTEMA COMPONENTE

MODULAR SYSTEM

Design by Riflessi Lab

Un modulo alto concepito come una libreria che può essere posizionata sia a parete sia come divisorio per separare gli ambienti in modo discreto, e un modulo basso utilizzabile come un raffinato appoggio per un retro divano. Disponibile grafite e ottone spazzolato a mano o tutta grafite.

Comprising a tall module designed as a bookcase that can stand against a wall or be used as a partition to separate areas discreetly, and a lower module ideal for a refined table behind a sofa. Available graphite and hand brushed brass or all in graphite.





TAVOLINI

Ricercati oggetti d'arredo

COFFEE TABLES - SOPHISTICATED FURNISHINGS

LUMIERE

tavolino / coffee table

Design by Riflessi Lab

Cornice in metallo verniciato grafite, oro rosa, champagne perlato o **ottone, titanio o cobalto spazzolati a mano**. Piano in vetro specchiante o bronzato o in ceramica.

Painted metal frame in the colours graphite, pink gold, pearly champagne or **hand brushed brass, titanium or cobalt** with brass spacers. Top in mirror effect or bronze glass or ceramic.





COFFEE

tavolino / coffee table

Design by Riflessi Lab

Piedi in metallo verniciato grafite, oro rosa, champagne perlato o **ottone, titanio o cobalto spazzolati a mano**. Piano in metallo negli stessi colori, in vetro trasparente fumé, specchiante o Bronzato, in ceramica, marmo o legno bisellato. Painted metal legs in the colours graphite, pink gold, pearly champagne or **hand brushed brass, titanium or cobalt** with brass spacers. Top in metal in the same colours or smoked grey glass, mirror effect or bronze Glass, ceramic, marble or bevelled wood.



PEGASO
tavolino / coffee table
Design by Riflessi Lab

Base in metallo verniciato grafite, piano in metallo verniciato **ottone o titanio spazzolato a mano** o in ceramica. Disponibile anche con gambe grafite e piano effetto tibetano spazzolato a mano.

Graphite base, top in metal painted **brass or titanium hand brushed** or in ceramic. Available also with graphite legs and top with Tibetan effect hand brushed.

TAVOLINI / COFFEE TABLES



CORNER
tavolino / coffee table
Design by Riflessi Lab

Piano in ceramica o
cristallo specchiante
bronzato o fumé, piedi in
metallo verniciato grafite,
bianco opaco, champagne
perlato o **ottone, titanio
o cobalto spazzolati a
mano.**

Top in ceramic or bronzed
or smoked mirrored glass,
Painted metal legs in the
colours graphite, matt
white, pearly champagne or
**brass, cobalt or titanium
hand brushed.**





TRIS
tavolino / coffee table
Design by Riflessi Lab

Piano e gambe in metallo
Verniciato grafite, **ottone**
o titanio spazzolato a
mano. Disponibile anche
con gambe grafite e
piano effetto tibetano
spazzolato a mano.

Top and legs in metal
painted graphite, **brass or**
titanium hand brushed.
Available also with graphite
legs and top with Tibetan
effect hand brushed.



SHANGAI
tavolino / coffee table
Design by Riflessi Lab

Base **cobalto spazzolato**
a mano, piano a botte
in cristallo bisellato fumé.
Hand brushed cobalt
base., bevelled shaped
smoked grey glass top.



ZEN
tavolino / coffee table
Design by Riflessi Lab

Base in **ottone**
spazzolato a mano, piano
in **cristallo trasparente**.
Hand brushed brass base,
glass transparent top.



SPECCHI

Come sculpture

MIRRORS LIKE SCULPTURES

UN DESIGN CHE RESISTE ALLA PROVA DEL TEMPO, CHE PLASMA MATERIALI PREZIOSI PER CREARE SPECCHI ICONICI: I NUOVI OGGETTI DEL DESIDERIO.

TIMELESS DESIGN THAT USES OUTSTANDING MATERIALS TO CREATE ICONIC MIRRORS: THE NEW OBJECTS OF DESIRE.

Affascinanti,
irrompono nello
spazio con i loro
bagliori.
Their fascinating
glow amazes

Materiali pregiati e forme inedite

OUTSTANDING MATERIALS AND ORIGINAL SHAPES



VENERE
specchio / mirror
Design by Luca Roccadadria

Specchio rotondo o rettangolare in vetro fuso specchiante o bronzato.
Round or rectangular mirror in mirror effect or bronzed moulded glass.





Sinuosi

ELEGANTI E CURVILINEI CON CORNICE SPECCHIANTE

ELEGANTLY CURVED WITH MIRROR FRAME

SOUL specchio / mirror

Design by Andrea Lucatello

Specchio con cornice
realizzata in fusione in
cristallo specchiante.
Mirror with moulded frame
in mirror effect glass.

PETALO specchio / mirror

Design by Luca Roccadadria

Specchi con cornice in
cristallo specchiante o
bronzato, realizzati in
fusione.
Mirrors with frame in
mirror effect or bronzed
moulded glass.



MADAME
specchio / mirror
Design by Riflessi Lab

Specchio tondo con cornice mensola destra in metallo verniciato oro rosa, grafite o champagne perlato.

Round mirror with metal shelf on the right and frame painted pink gold, graphite or pearly champagne.



LUMIERE
specchio / mirror
Design by Luca Roccadadria

Specchio con cornice in metallo verniciato finitura oro rosa, grafite, champagne perlato o ottone, titanio, cobalto spazzolati a mano.

Mirror with metal frame painted pink gold, graphite, pearly champagne or hand brushed brass, titanium or cobalt.



OMEGA
specchio quadrato /
square mirror
Design by Riflessi Lab

Specchio bronzato
con cornice in metallo
verniciato finitura oro
rosa, grafite, champagne
perlato o **ottone, titanio,
cobalto spazzolati a
mano.**

Bronzed mirror with metal
frame painted pink gold,
graphite, pearly champagne
or **hand brushed brass,
titanium or cobalt.**



OMEGA
specchio tondo /
mirror round

Design by Riflessi Lab

Specchio bronzato
con cornice in metallo
verniciato finitura oro
rosa, grafite, champagne
perlato o **ottone, titanio,
cobalto spazzolati a
mano.**

Bronzed mirror with metal
frame painted pink gold,
graphite, pearly champagne
or **hand brushed brass,
titanium or cobalt.**



Geometrici

FORME GRAFICHE

E SUPERFICI INCLINATE

GRAPHIC SHAPES AND TILTED SURFACES

CITY LIFE

specchio / mirror

Design by Riflessi Lab

Specchio con superfici specchianti inclinate. Disponibile in cristallo specchiante o specchiante bronzato. Installabile a 360°.

Mirror with tilted mirror effect surfaces. Installable to 360°. Available in mirror effect or bronzed glass.

LEVANTE

specchio / mirror

Design by Riflessi Lab

Specchio con superfici specchianti inclinate. Disponibile in cristallo specchiante o specchiante bronzato.

Mirror with tilted mirror effect surfaces. Available in mirror effect or bronzed glass.



PRISMA
specchio / mirror
Design by Riflessi Lab

Specchi con superfici
 specchianti inclinate.
 Disponibile in cristallo
 specchiante o specchiante
 bronzato.
 Mirrors with tilted mirror
 effect surfaces. Available
 in mirror effect or bronzed
 glass.



DIAMANTE
specchio / mirror
Design by Riflessi Lab

Specchio con superfici
 specchianti inclinate ad
 effetto tridimensionale.
 Disponibile in cristallo
 specchiante o specchiante
 bronzato.
 Mirror with tilted mirror
 effect surfaces. Available
 in mirror effect or bronzed
 glass.





PANDORA
specchio / mirror
Design by Riflessi Lab

Specchio con cornice
perimetrale con bisellatura
irregolare. Disponibile in
cristallo specchiante o
specchiante bronzato.

Mirror with irregularly
bevelled perimeter border,
mirror effect or bronzed.
Available in mirror effect or
bronzed glass.

GIOIELLO**specchio / mirror**

*Design by Molteni/Baron
Associati*

Specchio in cristallo
extrachiaro sp. 10 mm con
cornice bisellata fronte/
retro irregolare.

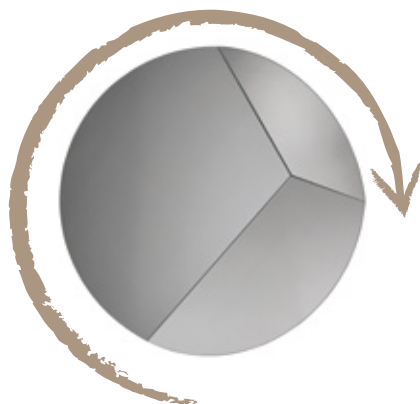
Mirror in 10 mm thick extra
clear glass with irregularly
bevelled frame front and
back.

CIRCLE**specchio / mirror**

Design by Riflessi Lab

Specchi con superfici
specchianti inclinate.
Installabili a 360°.

Mirrors with tilted mirror
effect surfaces. Installable
to 360°.



Installabile a 360°

HANGABLE ON THE WALL AT
ANY POSITION



TRAPEZIO
specchio / mirror
Design by Riflessi Lab

Specchio con cornice
inclinata specchiante o
bronzato.

Mirror with tilted frame
mirror effect or bronzed.





MIRROR TV
specchio / mirror
Design by Riflessi Lab

Specchio da parete con alloggiamento per televisore, in vetro semiriflettente sp. 6 mm con supporto e telaio in alluminio finitura opaca.
Wall mirror in 6mm thick semi-reflecting glass, with TV housing. Matt aluminium finish for the support and frame.

Vibranti

COME UNA SCULTURA

VIBRANT AS ONE SCULPTURE

NAUSICA

specchio / mirror

Design by Riflessi Lab

Specchio con cornice specchiante sagomata inclinata. Disponibile anche con cornice rivestita in foglia oro, argento, rame oppure in oro bianco, oro nero e bronzo.

Mirror with tilted shaped mirror effect frame.

Available also with frame covered with gold, silver, copper leaf or white gold, black gold or bronzed leaf.

MITO

specchio / mirror

Design by Riflessi Lab

Specchio con cornice in alluminio o laccato Ral modellato a mano. Pezzi unici.

Mirror with hand hammered aluminum frame. Unique pieces.



DIAMOND**specchio / mirror***Design by Riflessi Lab*

Specchio con cornice modellata a diamante in acciaio inox specchiante o Reflect Rose gold, Reflect blue, Reflect Black o in metallo verniciato **ottone, titanio o cobalto spazzolati a mano.**

Mirror with frame folded in diamond shape in inox steel or mirror effect steel
Reflect Rose gold, Reflect blue, Reflect Black or metal frame **Hand brushed brass, titanium or cobalt.**

**DIAMOND NELLA NUOVA FINITURA**

Acciaio inossidabile verniciato.

Diamond in the new finish
Painted stainless steel.



IONICO

specchio / mirror

Design by Riflessi Lab

Specchio bisellato ovale, disponibile specchiante o bronzato.

Oval bevelled mirror, available in mirror effect or bronzed glass.

DIOSCURI

specchio / mirror

Design by Riflessi Lab

Specchio bisellato ovale, disponibile specchiante o bronzato.

Oval bevelled mirror, available in mirror effect or bronzed glass.



SESTANTE
specchio / mirror
Design by Riflessi Lab

Specchio ottagonale
bronzato con bisellatura
irregolare.
Octagonal bronzed mirror,
irregularly bevelled.



OROLOGI

Atmosfere suggestive e materiali preziosi

CLOCKS - REFINED ATMOSPHERES

**L'OROLOGIO È UN ELEMENTO FUNZIONALE
MA SOPRATTUTTO DECORATIVO**

CLOCKS ARE DECORATIVE AS WELL AS
FUNCTIONAL ELEMENTS

PORTOFINO

orologio / clock

Design by Riflessi Lab

Orologio da muro
realizzato in vetro
serigrafato effetto marmo,
finiture Bianco Statuario,
Noir Desir, Calacatta Oro.
Marble-effect, screen-
printed wall clock in white
Statuary, Noir Desir or
Calacatta Gold.





ROMA
orologio / clock
Design by Riflessi Lab

Orologio da muro
realizzato in cristallo
specchiante bronzato
serigrafato.
Wall clock in screen-printed
bronzed mirror effect glass.



POSITANO
orologio / clock
Design by Riflessi Lab

Orologio da muro realizzato in cristallo specchiante bronzato con serigrafia oro e cornice in cristallo trasparente bronzato.

Wall clock in bronzed mirror effect glass with gold screen-printed and transparent bronzed glass frame.



CAPRI
orologio / clock
Design by Riflessi Lab

Orologio da muro realizzato in cristallo specchiante con bisellatura perimetrale.

Wall clock in mirror effect glass with perimeter bevel.



SKY LINE
orologio / clock
Design by Riflessi Lab

Orologio da muro realizzato in cristallo specchiante fumé serigrafato.

Mirror clock in screen painted smoked glass.

SANREMO
orologio / wall clock

Design by Riflessi Lab

Orologio in cristallo
specchiante bronzato
con cornice in cristallo
serigrafato effetto marmo,
finitura Sahara Noir lucido.
Wall clock in bronzed mirror
effect glass with Marble-
effect screen-printed glass
frame glossy Sahara Noir.



TAORMINA
orologio / wall clock
Design by Riflessi Lab

Orologio da muro in
 cristallo specchiante
 fumé serigrafato, con
 illuminazione led a luce
 calda.
 Wall clock in screen painted
 smoked grey mirror effect
 glass with led lighting warm
 light.



LAMPADE

Illuminare con stile

LAMPS - STYLISH ILLUMINATION

Forme semplici
in metallo con
finiture preziose
Simple shapes in
metal with quality
finishes



TOTÒ
lampada / lamp
Design by Riflessi Lab

Piantana in metallo
verniciato rubino, grafite,
blu cobalto, verde salvia e
champagne con tavolino e
vassoio in ceramica.

Floor lamp in metal painted
ruby, graphite, cobalt blue,
champagne and sage
green with coffee table and
ceramic tray.





SHANGAI

lampade / lamps

Design by Riflessi Lab

Lampada con struttura in metallo verniciato con trattamento galvanico nei colori rame satinato, oro satinato e cromo nero satinato con elemento centrale in cromo nero satinato oppure tutto acciaio lucido.

Lamps with metal structure painted with galvanic treatment in the following colors: satin copper, satin gold or satin black chrome with central element painted satin black chrome or entirely in shiny steel.





STILO

lampade / lamps

Design by Riflessi Lab

Lampada formata da tubolari in metallo verniciato con trattamento satinato galvanico nei colori rame satinato, oro satinato o cromo nero satinato.

Lamps formed by metal tubes in metal painted with galvanic treatment in the following colors: satin copper, satin gold and satin black chrome.





BUBBLE

lampade / lamps

Design by Riflessi Lab

Supporto in metallo verniciato grafite, cerchi in metallo verniciato oro rosa e oro. Bulbi in vetro bianco satinato.

Shaft in metal painted graphite, rings in metal painted gold and pink gold. Bulbs in white satin glass.



DODO**lampade / lamps***Design by Riflessi Lab*

Struttura in metallo verniciato oro rosa e bulbi in vetro bianco satinato. Disponibile anche con struttura grafite o oro. Lamps with metal structure painted pink gold and bulbs in white satin glass. Available also in metal painted graphite or gold.





LED LOOP lampade / lamps

Design by Riflessi Lab

Lampade con struttura in metallo verniciato grafite e cerchi disponibili in metallo verniciato con trattamento galvanico nei colori rame satinato, oro satinato o cromo nero satinato.

Lamps with metal structure painted graphite and rings available in metal painted with galvanic treatment in the following colors: satin copper, satin gold and satin black chrome.





MERIDIAN
lampade / lamps
Design by Riflessi Lab

Lampade con e senza
 attacco orientabile con
 struttura in metallo
 verniciato nelle finiture
 grafite, oro o oro rosa.
 Bulbi in vetro bianco
 satinato.

Lamps with or without
 360 degree adjustable
 lamp hook. Metal structure
 painted graphite, gold or
 pink gold. Bulbs in white
 satin glass.





TWIST**lampade / lamps***Design by Riflessi Lab*

Lampade con struttura in metallo verniciato nelle finiture oro o nero satinato. Bulbi in vetro bianco satinato.

Lamps with metal structure painted gold or black. Bulbs in white satin glass.



RIFLESSI[®]



Riflessi s.r.l.

Contrada Cucullo, Zona Industriale
66026 ORTONA (CH) ITALIA

commerciale@riflessi.it

www.facebook.com/riflessimadeinitaly - www.instagram.com/riflessimadeinitaly - www.pinterest.com/riflessisrl



RIFLESSI[®]

DESIGNED AND MADE IN ITALY

riflessi.it

RIFLESSI STORE: **MILANO** PIAZZA VELASCA 6 - **ROMA** VIA PO 1H - **NAPOLI** VIALE KENNEDY 415/419
BERGAMO VIA SUARDI 7 - **PESCARA** VIA G. MAZZINI, 133 - **BARI** P.ZZA GARIBALDI 75/A
BRESCIA VIALE VENEZIA 1 - **TORINO** C.SO TURATI 82 - **REGGIO CALABRIA** C.SO GARIBALDI 545

RIFLESSI COLLECTION TAVOLI SEDIE CONSOLLE MADIE TAVOLINI SPECCHI OROLOGI LAMPADE