

New products

armmet

armmet.it

2023

Dopo p. 02
by Jun Yasumoto



Eau Rouge p. 12
by Meneghello Paoletti



Kiyumi p. 22
by Tomoya Tabuchi



Mani WL p. 32
by Welling Ludvik



Belle Tub p. 40
by Arrmet LAB



Dam Tub p. 48
by Arrmet LAB



Cèpe p. 58
by Sylvain Willenz



Ring p. 68
by Arrmet LAB



Rocks p.78
by Arrmet LAB





Dopo





Dopo is a large and extremely comfortable lounge chair. Its wide and ergonomic backrest promotes relaxation while keeping you in touch with your surroundings. Its open seat and comfortable headrest enable different positions. The tubular frame and the large and soft shapes together represent the unique and distinctive design feature of this collection. The collection is composed by Relax, Bergère, Lounge and Coffee Tables. Relax embodies the concept of extreme comfort and cosiness, thus becoming the star feature of home interiors. The Lounge and Bergère versions are more suitable for the contract sector, representing the ideal solution for elegant foyers or entertainment halls, and bringing overall comfort and relaxation wherever needed.

Dopo è una lounge chair pronta ad accogliervi nel suo spazio generoso ed estremamente confortevole. Ha lo schienale largo ed ergonomico, che invita a rilassarsi mantenendo un contatto con l'ambiente circostante. La seduta aperta e il comodo poggiatesta consentono di scegliere la posizione più comoda. Il mix tra la struttura tubolare e le forme morbide e generose degli imbottiti rappresenta la cifra stilistica di questa collezione. La collezione è composta da Relax, Bergère, Lounge e Coffee Tables. Il modello Relax rappresenta il concetto di comfort rilassato e accogliente e diventa protagonista del living. La Lounge e la Bergère sono varianti più adatte al settore contract, la soluzione ideale per eleganti sale d'attesa o di intrattenimento e per tutte le situazioni di relax e accoglienza.



DOPO BERGÈRE

Art. 1202
Poltrona girevole bergère tappezzata con fusto in acciaio cromato o verniciato/Swivel and upholstered bergère armchair with chromed or painted swivel steel base

A/H 110 × L/W 92 × P/D 85 cm
Seduta/Seat: 42 cm
Bracciolo/Arm: 58 cm

Tessuto/Fabric: 340 cm



DOPO COFFEE 56

Art. 1212
Tavolino da caffè con base in acciaio cromato o verniciato e piano in Silestone 20mm/Coffee table with chromed or painted steel base and Silestone top 20mm

Base/Base
A/H 33 × L/W 45 × 45 cm

Piano/Top
Diametro/Diameter: 56 cm



DOPO LO

Art. 1201
Poltrona lounge tappezzata con fusto quattro gambe in acciaio cromato o verniciato/Upholstered lounge armchair with chromed or painted four legs steel base

A/H 84 × L/W 92 × P/D 81 cm
Seduta/Seat: 42 cm
Bracciolo/Arm: 58 cm

Tessuto/Fabric: 270 cm



DOPO COFFEE 90

Art. 1213
Tavolino da caffè con base in acciaio cromato o verniciato e piano in Silestone 20mm/Coffee table with chromed or painted steel base and Silestone top 20mm

Base/Base
A/H 33 × L/W 90 × 90 cm

Piano/Top
Diametro/Diameter: 90 cm



DOPO RELAX

Art. 1203
Poltrona relax tappezzata con fusto quattro gambe in acciaio cromato o verniciato/Upholstered relax armchair with chromed or painted four legs steel base

A/H 96 × L/W 92 × P/D 95 cm
Seduta/Seat: 42 cm
Bracciolo/Arm: 52 cm

Tessuto/Fabric: 340 cm



DOPO BERGÈRE

Art. 1204
Ottomana tappezzata con fusto in acciaio cormato o verniciato/Upholstered ottoman with chromed or painted frame

A/H 40 × L/W 70 × P/D 47 cm
Seduta/Seat: 40 cm

Tessuto/Fabric: 130 cm



Seduta/Seat
Tappezzato con espanso ignifugo/
Upholstered with flame-retardant polyurethane foam

FIDIVI Jet	FLUKSO Secret	ABITEX Magnum	SPRADLING Valencia	FLUKSO Eve	GABRIEL Step	GABRIEL Step Melange	SPRADLING Dolce
SPRADLING Silvertex	FLUKSO Superb	GABRIEL Focus	GABRIEL Focus Melange	GABRIEL Focus Melange	Rouse	KVADRAT Relate	KVADRAT Field 2
FRANCO FAB-BRI St Moritz	KVADRAT Remix 3	KVADRAT Re-wool	KVADRAT Canvas 2	ONE MARIO SIRTORI Orsetto	KVADRAT Steelcut Trio 3	KVADRAT Steelcut 3	KVADRAT Steelcut Quartet
L'OIPICIO NoFire	KVADRAT Hero	KVADRAT Harald 3	KVADRAT Fiord 2	KVADRAT Divina MD	KVADRAT Divina Melange 3	KVADRAT Hallingdal 65	KVADRAT Vidar 4
KVADRAT Gentle 2	POLO Pelle Leather	SOFTY Pelle Leather					

Fusto/Frame
Acciaio/Steel

CRO			VER			
CRO Cromato Chromed	M16 Latte Milk	M7 Nero Black	M8 Marrone Brown	M12 Grafite Graphite	M19 Rosso ossido Oxide red	M24 Beige Beige
GAL						
SG Oro lucido Shiny gold	BR Ottone Brass	NK Nickel nero Black nickel				



Eau Rouge

White M16 structure + white melange flat braid
Oxide red M19 structure + red melange flat braid



It is an all-Italian project that combines the principles of ergonomics, comfort and personality by fusing creativity and the industrial production processes into streamlined and dynamic lines. Eau Rouge stems from the desire to design and make a chair for the contract sector that is characterised by a well-defined the chair particularly stands out in the welded joints of the steel tubular legs, the armrests and the backrest on which a flat nautical braid is woven, creating a perfect balance between mass and void.








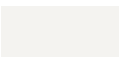




Un progetto made in Italy che sviluppa ergonomia, comfort e personalità attraverso una lavorazione che concilia l'atto creativo con i processi produttivi industriali in un design razionale e dinamico. Eau Rouge è la risposta al desiderio di progettare e produrre una sedia per il mondo contract, destinata ad abitare gli ambienti esterni con una sua precisa personalità stilistica. Il senso decorativo si compie nel punto in cui si raccordano i tubolari in acciaio delle gambe, del bracciolo e dello schienale, sui quali artigianalmente viene ordito un intreccio in treccia nautica piatta, creando un perfetto equilibrio tra pieni e vuoti.



Chair white M16 structure + white melange flat braid



Chair white M16 structure + white melange flat braid

EAU ROUGE		by Meneghello Paoletti				
EAU ROUGE	Art. 1205 Sedia impilabile per esterno, struttura in acciaio verniciato, sedile e schienale intrecciati con treccia nautica piatta/ Outdoor stackable chair, painted steel frame, nautical flat braid woven seat and back	EAU ROUGE AR	Art. 1206 Sedia con braccioli impilabile per esterno, struttura in acciaio verniciato, sedile e schienale intrecciati con treccia nautica piatta/ Outdoor stackable chair with armrests, painted steel frame, nautical flat braid woven seat and back			
						
	A/H 81 × L/W 54 × P/D 60 cm Seduta/Seat: 46 cm Impilabilità/Stackability: 4 Pz./Pcs		A/H 82 × L/W 54 × P/D 60 cm Seduta/Seat: 46 cm Bracciolo/Arm: 65 cm Impilabilità/Stackability: 4 Pz./Pcs			
Seduta/Seat Treccia nautica piatta/ Flat nautical braid		TRECCIA POLIESTERE / POLYESTER BRAID				
						
		RP8 Bianco mélange White mélange	RP9 Beige mélange Beige mélange	RP10 Marrone mélange Brown mélange	RP11 Nero mélange Black mélange	RP12 Red mélange Red mélange
Fusto/Frame Acciaio/Steel		VER				
						
		M16 Latte Milk	M7 Nero Black	M8 Marrone Brown	M19 Rosso ossido Oxide red	M24 Beige Beige





Kiyumi wood





Kiyumi Wood, designed by Tomoya Tabuchi, is the new wood version of Kiyumi. The balance achieved in every single component of the chair reflects the harmony of the original project and guarantees durability and sturdiness in public spaces as well. The power of design that transcends time features prominently in this project, in addition to the sense of warmth and tactile softness of the material used. This new chair features the seat and backrest of the original Kiyumi model, but fixed on to a new solid wood frame.

Kiyumi Wood di Tomoya Tabuchi è la reinterpretazione della sedia Kiyumi in una inedita versione tutta in legno. L'equilibrio dei volumi riproduce l'armonia del progetto originale e garantisce una resistenza ottimale anche negli ambienti della collettività. La forza del design che supera il tempo caratterizza questo progetto, che si arricchisce del calore e della morbidezza al tatto del materiale con cui è realizzata. Questa nuova sedia utilizza il sedile e lo schienale del primo modello Kiyumi, ma li innesta su una struttura in legno massello.

KIYUMI WOOD

Art. 1219
Sedia con fusto in frassino massello, seduta e schienale in multistrato di frassino/Chair with solid ash frame, ash plywood seat and backrest

A/H 82 x L/W 55 x P/D 53 cm
Seduta/Seat: 47 cm

Impilabilità/Stackability: 2 Pz./Pcs



KIYUMI WOOD+F

Art. 1219
Sedia con fusto in frassino massello, schienale in multistrato di frassino verniciato e sedile tappezzato/Chair with solid ash frame, painted ash plywood backrest and upholstered seat

A/H 82 x L/W 55 x P/D 53 cm
Seduta/Seat: 48 cm

Tessuto/Fabric: 35 cm
Pelle/Leather: 0,60 m2

Impilabilità/Stackability: 2 Pz./Pcs



KIYUMI ST WOOD

Art. 1220
Sgabello con fusto in frassino massello, seduta e schienale in multistrato di frassino/Stool with solid ash frame, ash plywood seat and backrest

A/H 108 x L/W 58 x P/D 55 cm
Seduta/Seat: 77 cm



KIYUMI ST WOOD+F

Art. 1220
Sgabello con fusto in frassino massello, schienale in multistrato di frassino verniciato e sedile tappezzato/Stool with solid ash frame, painted ash plywood backrest and upholstered seat

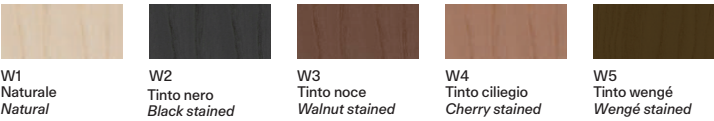
A/H 108 x L/W 58 x P/D 55 cm
Seduta/Seat: 78 cm

Tessuto/Fabric: 35 cm
Pelle/Leather: 0,60 m2

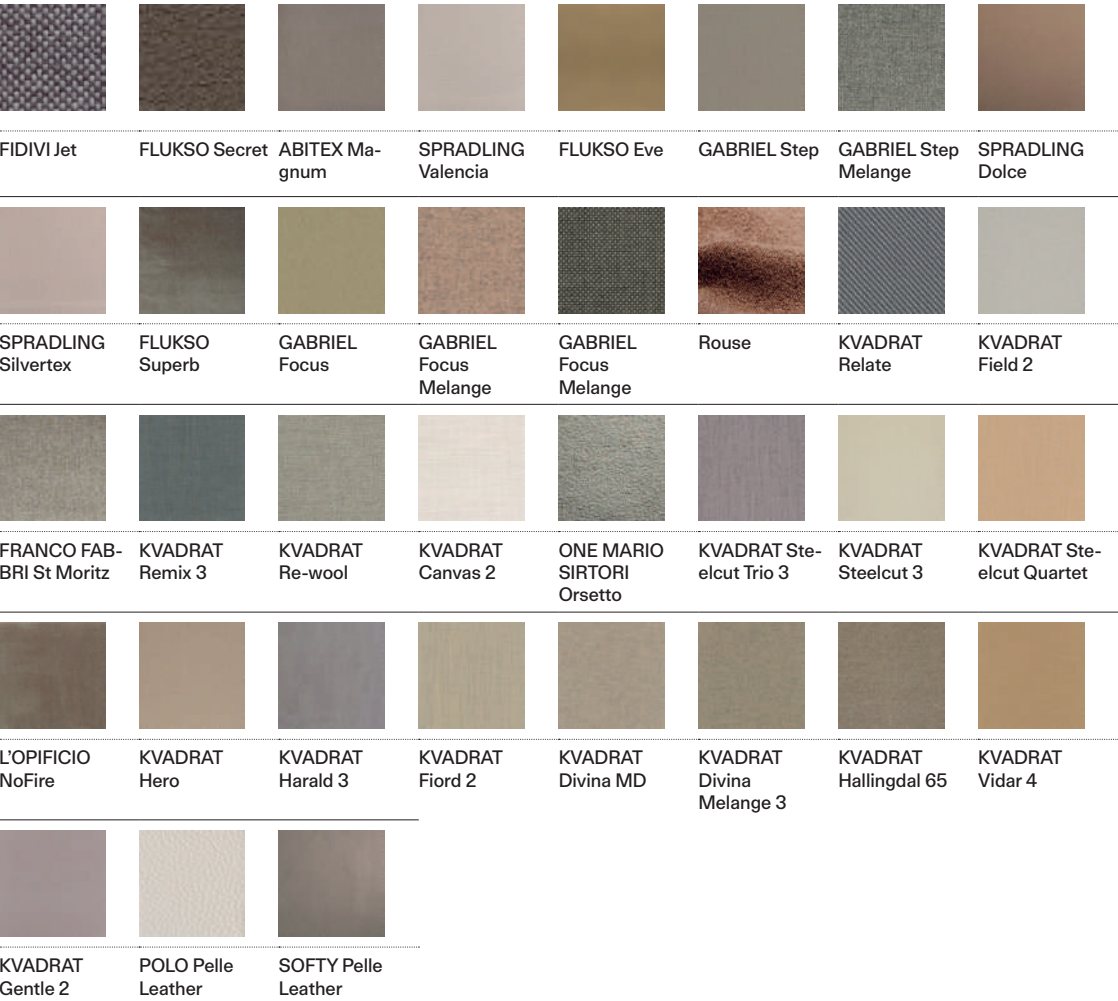


Fusto/Frame
Legno/Wood

LEGNO FRASSINO / ASHWOOD



Seduta/Seat
Tappezzato con espanso ignifugo/Upholstered with flame-retardant polyurethane foam







Mani WL



MANI WL

Art. 1207
Sedia con fusto in frassino naturale o verniciato, scocca in polipropilene tappezzata con espanso ignifugo/Chair with natural or painted ash wood frame, upholstered polypropylene shell with flame-retardant polyurethane foam

A/H 80,5 x L/W 47 x P/D 52 cm
Seduta/Seat: 46 cm

Tessuto/Fabric: 100 cm
Pelle/Leather: 1,50 m2

*Disponibile anche con scocca in plastica. Sedile o controscocca tappezzati su richiesta/Plastic shell available. Upholstered seat or front upholstery upon request



MANI ARMSHELL WL

Art. 1208
Poltroncina con fusto in frassino naturale o verniciato, scocca in polipropilene tappezzata con espanso ignifugo/Armchair with natural or painted ash wood frame, upholstered polypropylene shell with flame-retardant polyurethane foam

A/H 82 x L/W 61 x P/D 56 cm
Seduta/Seat: 47 cm
Bracciolo/Arm: 68 cm

Tessuto/Fabric: 120 cm
Pelle/Leather: 2,20 m2

*Disponibile anche con scocca in plastica. Sedile tappezzato su richiesta/Plastic shell with plastic or upholstered seat available



Fusto/Frame
Legno/Wood

LEGNO FRASSINO / ASHWOOD



W1
Naturale
Natural



W2
Tinto nero
Black stained



W3
Tinto noce
Walnut stained

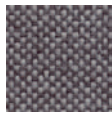


W4
Tinto ciliegio
Cherry stained



W5
Tinto wengé
Wengé stained

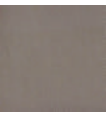
Seduta/Seat
Tappezzato con espanso ignifugo/
Upholstered with flame-retardant polyurethane foam



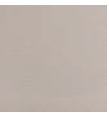
FIDIVI Jet



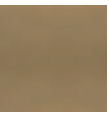
FLUKSO Secret



ABITEX Magnum



SPRADLING Valencia



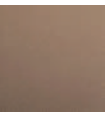
FLUKSO Eve



GABRIEL Step Melange



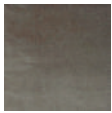
GABRIEL Step Melange



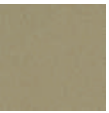
SPRADLING Dolce



SPRADLING Silvertex



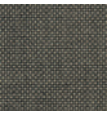
FLUKSO Superb



GABRIEL Focus



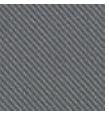
GABRIEL Focus Melange



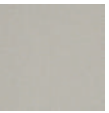
GABRIEL Focus Melange



Rouse



KVADRAT Relate



KVADRAT Field 2



FRANCO FAB-BRI St Moritz



KVADRAT Remix 3



KVADRAT Re-wool



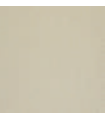
KVADRAT Canvas 2



ONE MARIO SIRTORI Orsetto



KVADRAT Steelcut Trio 3



KVADRAT Steelcut 3



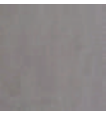
KVADRAT Steelcut Quartet



L'OPIFICIO NoFire



KVADRAT Hero



KVADRAT Harald 3



KVADRAT Fiord 2



KVADRAT Divina MD



KVADRAT Divina Melange 3



KVADRAT Hallingdal 65



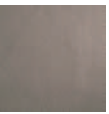
KVADRAT Vidar 4



KVADRAT Gentle 2



POLO Pelle Leather



SOFTY Pelle Leather



Natural ash W1, Kvadrat Divina MD203





Belle Tub





Belle is a collection of chairs and stools designed for contract spaces. It features a round seat and curved, wraparound backrest that embraces the body. Completely upholstered, Belle is customised through its finishes and bases to suit different environments – from restaurants and bars to workplaces.

Belle è una collezione di poltroncine e sgabelli destinati agli spazi del contract. È caratterizzata da un sedile tondo e da uno schienale curvo e avvolgente, che abbraccia chi vi si accomoda. Completamente rivestita, Belle si personalizza nelle finiture e nei basamenti per adattarsi ai diversi ambienti – dai luoghi della convivialità a quelli di lavoro.

BELLE TUB

Art. 1209
Poltroncina girevole, autoallineante,
tappezzata con espansi e rivestimen-
ti ignifughi. Struttura in multistrato
di legno/Swivel, self-aligning and
upholstered armchair with plywood
structure and flame-retardant foams
and coverings

A/H 79 x L/W 54 x P/D 53 cm
Seduta/Seat: 47 cm
Bracciolo/Arm: 58 cm

Tessuto/Fabric: 220 cm
Pelle/Leather: 3,70 m2



Seduta/Seat
Tappezzato con espan-
so ignifugo/
Upholstered with fla-
me-retardant
polyurethane foam

FIDIVI Jet	FLUKSO Secret	ABITEX Ma-gnum	SPRADLING Valencia	FLUKSO Eve	GABRIEL Step	GABRIEL Step Melange	SPRADLING Dolce
SPRADLING Silvertex	FLUKSO Superb	GABRIEL Focus	GABRIEL Focus Melange	GABRIEL Focus Melange	Rouse	KVADRAT Relate	KVADRAT Field 2
FRANCO FAB-BRI St Moritz	KVADRAT Remix 3	KVADRAT Re-wool	KVADRAT Canvas 2	ONE MARIO SIRTORI Orsetto	KVADRAT Steelcut Trio 3	KVADRAT Steelcut 3	KVADRAT Steelcut Quartet
L'OPIFICIO NoFire	KVADRAT Hero	KVADRAT Harald 3	KVADRAT Fiord 2	KVADRAT Divina MD	KVADRAT Divina Melange 3	KVADRAT Hallingdal 65	KVADRAT Vidar 4
KVADRAT Gentle 2	POLO Pelle Leather	SOFTY Pelle Leather					



Belle Tub Rouse col12 - Rocks black M7 + Pietra Piasentina



Dam Tub



Dam is a collection of upholstered chairs featuring a backrest made of two or three joined soft, wraparound bands which, as well as providing comfortable support in the lumbar area, serve as armrests.

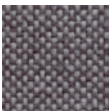

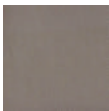


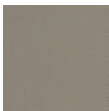

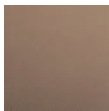

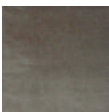




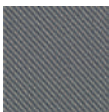


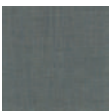

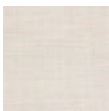
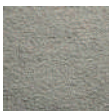












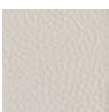
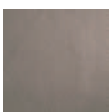


Dam è una collezione di sedute imbottite composta di poltroncine e sgabelli girevoli. Il sedile, tondo e ben imbottito, è avvolto dallo schienale a due o tre fasce sovrapposte che oltre a offrire un confortevole supporto lombare fungono da braccioli.



DAM TUB	Art. 1210 Poltroncina tappezzata con espansi e rivestimenti ignifughi. Struttura in multistrato di legno/Upholstered armchair with plywood structure and flame-retardant foams and coverings A/H 71 x L/W 67 x P/D 56 cm Seduta/Seat: 48 cm Tessuto/Fabric: 295 cm Pelle/Leather: 4,70 m2	DAM XL TUB	Art. 1211 Poltroncina tappezzata con espansi e rivestimenti ignifughi. Struttura in multistrato di legno/Upholstered armchair with plywood structure and flame-retardant foams and coverings A/H 86 x L/W 67 x P/D 58 cm Seduta/Seat: 48 cm Tessuto/Fabric: 345 cm Pelle/Leather: 5,40 m2
			

Seduta/Seat
Tapezzato con espanso ignifugo/
Upholstered with flame-retardant
polyurethane foam

							
FIDIVI Jet	FLUKSO Secret	ABITEX Magnum	SPRADLING Valencia	FLUKSO Eve	GABRIEL Step Melange	GABRIEL Step Melange	SPRADLING Dolce
							
SPRADLING Silvertex	FLUKSO Superb	GABRIEL Focus	GABRIEL Focus Melange	GABRIEL Focus Melange	Rouse	KVADRAT Relate	KVADRAT Field 2
							
FRANCO FAB-BRI St Moritz	KVADRAT Remix 3	KVADRAT Re-wool	KVADRAT Canvas 2	ONE MARIO SIRTORI Orsetto	KVADRAT Steelcut Trio 3	KVADRAT Steelcut 3	KVADRAT Steelcut Quartet
							
L'OPIFICIO NoFire	KVADRAT Hero	KVADRAT Harald 3	KVADRAT Fiord 2	KVADRAT Divina MD	KVADRAT Divina Melange 3	KVADRAT Hallingdal 65	KVADRAT Vidar 4
							
KVADRAT Gentle 2	POLO Pelle Leather	SOFTY Pelle Leather					



Dam Tub Gabriel Step 66152



Cèpe Coffee



Upholstered coffee table with Dekton mineral agglomerate top for indoor use, available in two sizes and heights to create soft compositions suitable for work or relax.

Tavolini imbottiti con piano in agglomerato minerale Dekton per uso in ambienti interni, disponibili in due misure e altezze per composizioni morbide adatte alle aree di lavoro o relax, sia nel contract che negli ambienti residenziali.



CÈPE COFFEE

by Arrmet LAB

CÈPE COFFEE XS

Art. 1221
Tavolino da caffè diam. 60cm. Struttura in multistrato di legno tappezzato e piano in agglomerato minerale Dekton sp12mm/D.60cm table. Upholstered plywood structure and mineral agglomerate Dekton top 12mm

Base/Base
A/H 42 x L/W 44 x 44 cm

Piano/Top
Diametro/Diameter: 60 cm

Tessuto/Fabric: 110 cm
Pelle/Leather: 1,40 m2



CÈPE COFFEE S

Art. 1222
Tavolino da caffè diam. 80cm. Struttura in multistrato di legno tappezzato e piano in agglomerato minerale Dekton sp12mm/D.80cm table. Upholstered plywood structure and mineral agglomerate Dekton top 12mm

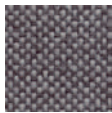
Base/Base
A/H 37 x L/W 54 x 54 cm

Piano/Top
Diametro/Diameter: 80 cm

Tessuto/Fabric: 110 cm
Pelle/Leather: 1,40 m2



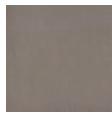
Struttura/Structure
Tappezzato con espanso ignifugo/
Upholstered with flame-retardant
polyurethane foam



FIDIVI Jet



FLUKSO Secret



ABITEX Magnum



SPRADLING Valencia



FLUKSO Eve



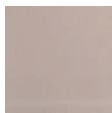
GABRIEL Step Melange



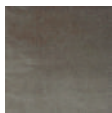
GABRIEL Step Melange



SPRADLING Dolce



SPRADLING Silvertex



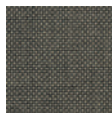
FLUKSO Superb



GABRIEL Focus



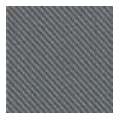
GABRIEL Focus Melange



GABRIEL Focus Melange



Rouse



KVADRAT Relate



KVADRAT Field 2



FRANCO FAB-BRI St Moritz



KVADRAT Remix 3



KVADRAT Re-wool



KVADRAT Canvas 2



ONE MARIO SIRTORI Orsetto



KVADRAT Steelcut Trio 3



KVADRAT Steelcut 3



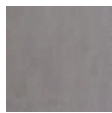
KVADRAT Steelcut Quartet



L'OPIFICIO NoFire



KVADRAT Hero



KVADRAT Harald 3



KVADRAT Fiord 2



KVADRAT Divina MD



KVADRAT Divina Melange 3



KVADRAT Hallingdal 65



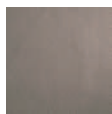
KVADRAT Vidar 4



KVADRAT Gentle 2



POLO Pelle Leather



SOFTY Pelle Leather

Ø 60 Orsetto 07/24 + Dekton Umber Top - Ø 80 Orsetto 07/24 + Dekton Albarium Top





Ring

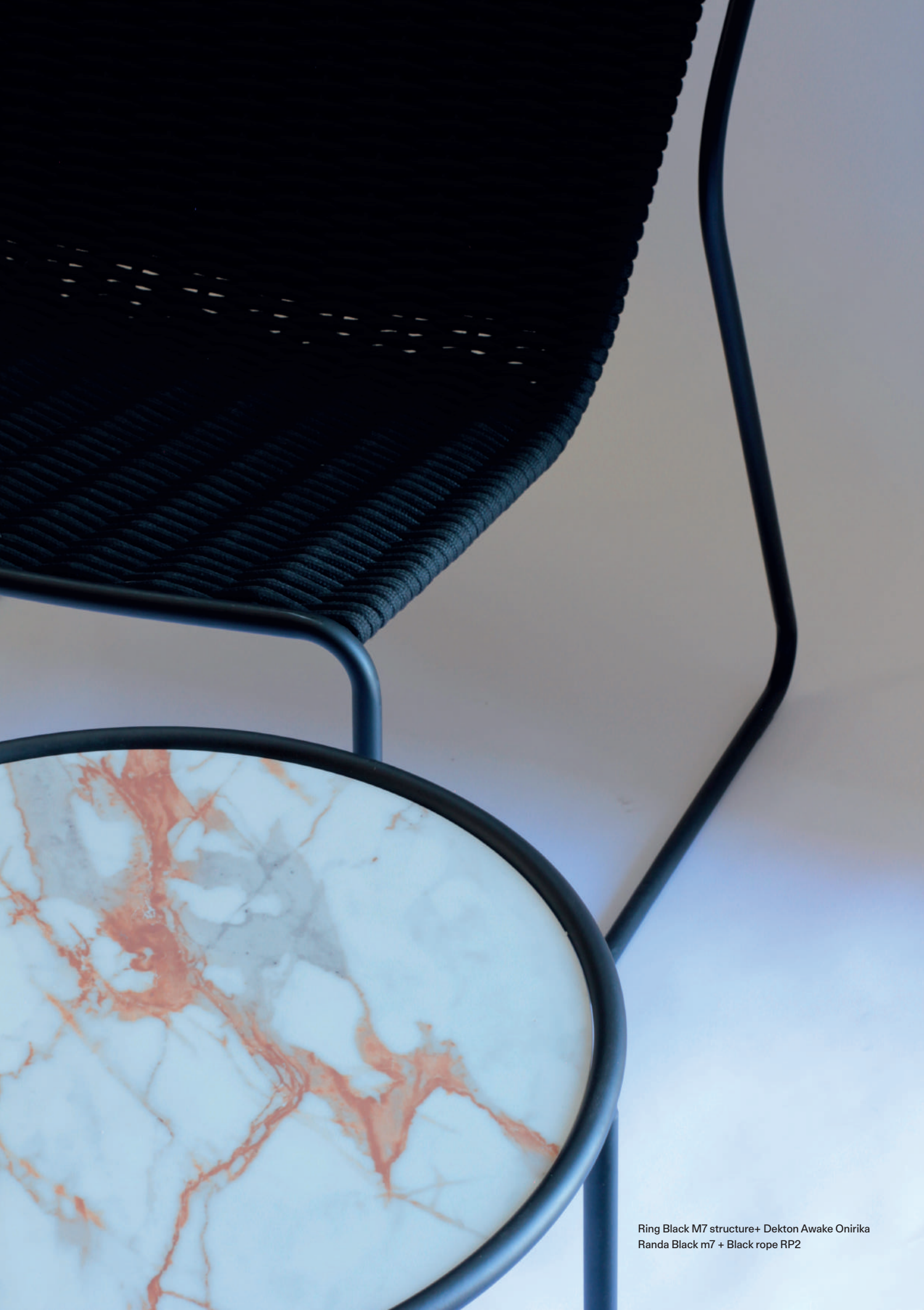


Ring is a simple lines tables collection. The structure is composed of four legs and a ring in painted tubular steel that houses a Dekton mineral agglomerate top. Also for external use.

Ring è una collezione di tavoli dalle linee semplici caratterizzati da una struttura minimale composta da quattro gambe e un anello in tubolare di acciaio verniciato che custodisce un piano agglomerato minerale Dekton. Anche per uso esterno.

Black M7 structure+ Dekton Awake Onirika





Ring Black M7 structure+ Dekton Awake Onirika
Randa Black m7 + Black rope RP2

RING

by Arrmet LAB

RING 50



Art. 1214
Tavolino da caffè con struttura in acciaio
verinicato e piano in Dekton sp8mm/
Coffee table with painted steel structure
and Dekton top sp8mm

Base/Base
A/H 40 × L/W 50 × 50 cm

Piano/Top
Diametro/Diameter: 46,6 cm

RING 60



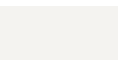





Art. 1215
Tavolino da caffè con struttura in
acciaio verinicato e piano in Dekton
sp8mm/Coffee table with painted
steel structure and Dekton top
sp8mm

Base/Base
A/H 46 × L/W 60 × 60 cm

Piano/Top
Diametro/Diameter: 56,6 cm

Fusto/Frame
Acciaio/Steel

VER

					
M16 Latte Milk	M7 Nero Black	M8 Marrone Brown	M12 Grafite Graphite	M19 Rosso ossido Oxide red	M24 Beige Beige





Rocks

Rocks is a collection of tables that combines the history of the company with the roots of its region. Acciaio and Pietra Piasentina come together to create tables suitable for contract and domestic environments. Also for external use.

Rocks è una collezione di tavoli che unisce la storia dell'azienda alle radici della sua regione. Acciaio e Pietra Piasentina si uniscono dando vita a dei tavolini adatti in ambienti contract e domestici. Anche per uso esterno.



Black M7 structure + Pietra Piasentina



Belle Tub Rouse col12 - Rocks black M7 + Pietra Piasentina

ROCKS

by Arrmet LAB

ROCKS 22

Art. 1216
Tavolino con base in Pietra Piasentina,
colonna e piano in lamiera verniciati/
Side table with Pietra Piasentina base,
paintad steel column and top

Base/Base
A/H 52 x L/W 13 x 13 cm

Piano/Top
Diametro/Diameter: 22 cm



ROCKS 30

Art. 1217
Tavolino con base in Pietra Pia-
sentina, colonna e piano in lamiera
verniciati/Side table with Pietra Pia-
sentina base, paintad steel column
and top

Base/Base
A/H 37 x L/W 13 x 13 cm

Piano/Top
Diametro/Diameter: 30 cm



Fusto/Frame
Acciaio/Steel

VER

M16 Latte Milk	M7 Nero Black	M8 Marrone Brown	M12 Grafite Graphite	M19 Rosso ossido Oxide red	M24 Beige Beige



Arrmet Srl
V. Alessandro Volta, 8
33044 Manzano UD Italy
T. +39 0432 937065
F. +39 0432 740102
PI./CF. IT 00452180300
arrmet.it

mail@arrmet.it