

DSW Chair

Modern All-around Chair



DSW Chair Collection



Duo SoftWork is a collection of fully upholstered seating that meets the evolving definition of the modern workplace. This chair features a combination of formal and functional characteristics, defined by a series of rounded, padded backrests and a delicately contoured seat. It is suitable for collaborative workspaces, touchdown and operational stations, meeting rooms, and training areas. The modern all-around chair combines elements of traditional task, meeting, and visitor seating with the concept of agile work and speed of communication.

For those who come to the office for a short period, it provides a comfortable and functional seat that doesn't require complex adjustments, allowing users to work comfortably while feeling free to move and interact. DSW Soft Work is equipped with intuitive and functional mechanisms: the backrest is height-adjustable, and the seat conforms to major international standards.

The self-weight mechanism with a wide tilt angle automatically adjusts the support resistance during rocking movements. The 3D adjustable armrests feature a soft pad support. The seat depth is also adjustable for enhanced performance, maintaining traditional task chair aesthetics. The rear structure is made of die-cast aluminum for durability and is available in three finishes: painted, polished, or chrome.

DSW is a sustainable and environmentally friendly product: most of the upholstery fabrics are made from recycled polyester and are OEKO-TEX 100 certified. There is also an option for Seaqual upholstery, made from recycled ocean plastic bottles. The DSW Collection complies with major international regulatory standards.

The mechanism is a synchronized oscillation system with automatic weight adjustment. During the oscillation movement, the backrest's resistance increases proportionally to the applied force. Individual tension adjustment can be made using a dedicated knob. The mechanism can be locked in an upright sitting position and in three intermediate positions using a side lever. Available upon request with or without forward tilt (removable). The mechanism housing is made of black polyamide.



Painted or chromed structure, nylon or chromed base, upholstery in fabric.



Painted or chromed structure, nylon or chromed base, upholstery in fabric.



Chromed structure, chromed base, upholstery in fabric.



Painted structure, nylon base, upholstery in fabric.



Painted structure, nylon base, upholstery in fabric.



Chromed structure, chromed base, upholstery in fabric.



Painted structure, nylon base, upholstery in fabric.



Painted structure, nylon base, upholstery in fabric.

DSW Chair Low Back | Technical Specification



DSW Low Back is designed for “desk and seat sharing,” featuring versatile formal characteristics and intuitive adjustment mechanisms. It is ideal for quickly adapting to multiple users while being simple, comfortable, and high-performing like a traditional task chair. This multi-use chair combines functional and comfort features with a clear expressive design. DSW Low Back is part of a multifunctional family of work and conference chairs suitable for a wide range of public, private, and home-office environments.

The chair design is characterized by the rounded and upholstered backrest and the gently contoured seat. The full upholstery of the seat and backrest is available in a wide selection of fabrics and leathers. The adjustable backrest height and seat depth allow for optimal individual adjustment.

Mechanism: Synchronised tilting mechanism with automatic weight adjustment: during tilting movements, the counter-thrust of the backrest increases in proportion to the force exerted. Possible adjusting of the tilting tension according to individual preference using a knob under the seat. The mechanism can be locked in a vertical sitting position and in three intermediate positions using a side

lever. Available on request with or without forward tilting (disengageable). Mechanism shell in black polyamide.

Load-bearing structure: The U-shaped die-cast aluminium rear structure guarantees maximum torsional strength and durability. It supports the backrest frame and transfers the geometry of the tilting movement to the backrest and seat. Available in three different finishes: epoxy painted, polished or chromed.

Low backrest: Low backrest shell in structural polyurethane padded with cold-foamed polyurethane cushion upholstered with fabric or leather. Height adjustment elements integrated into the frame.

Backrest height adjustment: Simple and intuitive backrest height adjustment, a standard feature of all DSW seats, makes the chair adaptable to various user heights. The backrest height adjustment range is 6.5 cm, positionable in six positions.

Seat: Made from cold-foamed polyurethane with a polypropylene structural insert. Upholstery in fabric or leather. On request, Class 11M approved foam that complies with all safety international standards.

Seat depth: easily adjustable seat-depth from a sitting position using an intuitive lever positioned under the seat. Adjustment range of 7.5 cm.

Height adjustment: The seat height can be adjusted using a lever, with a maximum range of 13 cm.

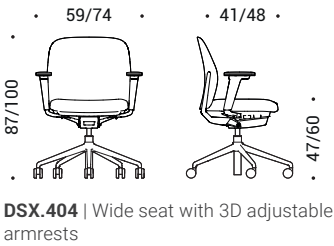
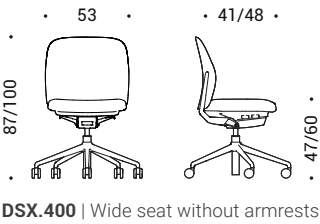
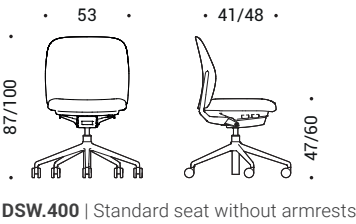
Armrests: Adjustable 3D armrests (height/depth/width). Additional width adjustability (4D) is available on request. Armrest pads made from soft black thermoplastic material (TPU). The vertical armrest support is made from die-cast aluminium with an epoxy painted, glossy or chrome finish.

Base: Five-spoke, made from die-cast aluminium, with a chrome, glossy or painted finish matching the structure or in black or light grey batch-dyed plastic material.

Castors: Made from black batch-dyed plastic material, 6 cm in diameter, with a soft central element for use on any floor type. Automatic safety brake compliant with the EN 12529:2001 standard.

Packaging: Standard delivery of the assembled product in a cardboard box. Available unassembled on request (assembly must be performed by qualified expert personnel).

Dimensions



DSW Chair Mid Back | Technical Specification



Duo SoftWork combines a “homely” design with all the technical and functional features typical of traditional task chairs. The result is a product that fits seamlessly into various work environments, from collaborative areas to individual workstations, and meeting and conference rooms. The medium-high backrest is suited for prolonged use, and the height adjustment allows for optimal individual positioning.

Mechanism: Synchronised tilting mechanism with automatic weight adjustment: during tilting movements, the counter-thrust of the backrest increases in proportion to the force exerted. Possible adjusting of the tilting tension according to individual preference using a knob under the seat. The mechanism can be locked in a vertical sitting position and in three intermediate positions using a side lever. Available on request with or without forward tilting (disengageable). Mechanism shell in black polyamide.

Load-bearing structure: The U-shaped die-cast aluminium rear structure guarantees maximum torsional strength and durability. It supports the backrest frame and transfers

the geometry of the tilting movement to the backrest and seat. Available in three different finishes: epoxy painted, polished or chromed.

Mid backrest: Mid backrest shell in structural polyurethane padded with cold-foamed polyurethane cushion upholstered with fabric or leather. Height adjustment elements integrated into the frame.

Backrest height adjustment: Simple and intuitive backrest height adjustment, a standard feature of all DSW seats, makes the chair adaptable to various user heights. The backrest height adjustment range is 6.5 cm, positionable in six positions.

Seat: Made from cold-foamed polyurethane with a polypropylene structural insert. Upholstery in fabric or leather. On request, Class 11M approved foam that complies with all safety international standards.

Seat depth: easily adjustable seat-depth from a sitting position using an intuitive lever positioned under the seat. Adjustment range of 7.5 cm.

Height adjustment: The seat height can be adjusted using a lever, with a maximum range of 13 cm.

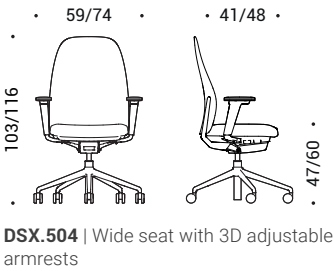
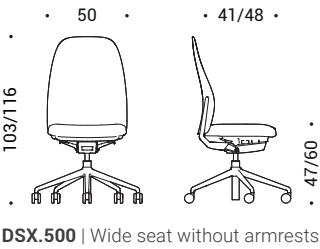
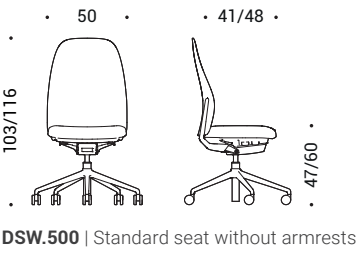
Armrests: Adjustable 3D armrests (height/depth/width). Additional width adjustability (4D) is available on request. Armrest pads made from soft black thermoplastic material (TPU). The vertical armrest support is made from die-cast aluminium with an epoxy painted, glossy or chrome finish.

Base: Five-spoke, made from die-cast aluminium, with a chrome, glossy or painted finish matching the structure or in black or light grey batch-dyed plastic material.

Castors: Made from black batch-dyed plastic material, 6 cm in diameter, with a soft central element for use on any floor type. Automatic safety brake compliant with the EN 12529:2001 standard.

Packaging: Standard delivery of the assembled product in a cardboard box. Available unassembled on request (assembly must be performed by qualified expert personnel).

Dimensions



Product Finishes

Aluminum | Base and structure



47 | Polished



55 | Chromed

070 | Grey
Powder coated111 | Black
Powder coatedR11 | Brown copper
Powder coatedR12 | Dark blue
Powder coatedR15 | Grey green
Powder coated

Nylon | Base

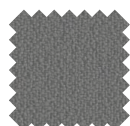
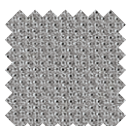
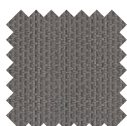
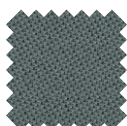
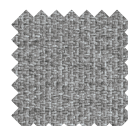
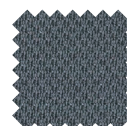
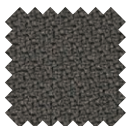
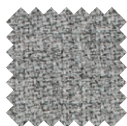
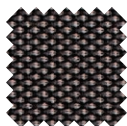
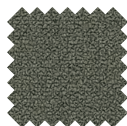
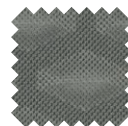


111 | Black



070 | Grey

Fabric

Cat. A | Bravo
(3 colors)Cat. B | Atlantic
(17 colors)Cat. B | Mini
(7 colors)Cat. B | Tonal
(15 colors)Cat. C | Cura
(15 colors)Cat. C | Mini Melange
(9 colors)Cat. C | Sealife
(10 colors)Cat. C | Sotega
(5 colors)Cat. C | Step
(8 colors)Cat. C | Step Melange
(8 colors)Cat. F | Breeze Fusion
(5 colors)Cat. F | Grain
(10 colors)Cat. K | Cubic, in combination with Atlantic
(10 colors)

Leather

Cat. E | Leather
(15 colors)

Materials Certifications

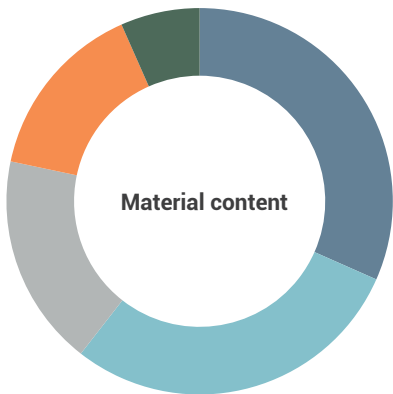
We use fabrics that guarantee high performance in terms of comfort, strength and sustainability. Attention to the health and safety of people and the environment are verified through globally-recognised product certification. Most of the upholstery we use for our seating collections is made from recycled materials which can also be reused at the end of their service life.



Sustainability

Our design and production philosophy is based on the pursuit of simplicity in order to create sustainable and durable collections. Our products have an unmistakable design which however is subjected to the carefull evaluation of any possible aspects to improve sustainability, durability and recyclability in accordance with the highest international standards. We believe that our responsible approach may effectively reduce environmental impact of our products throughout the entire lifecycle of the various components. We do not use chemicals hazardous or dangerous to the environment, and the materials we use are tested and evaluated for potentially harmful effects on human health and the environment. Where possible, we reduce packaging materials to a minimum, which also optimises transport volume.

DSW Chair



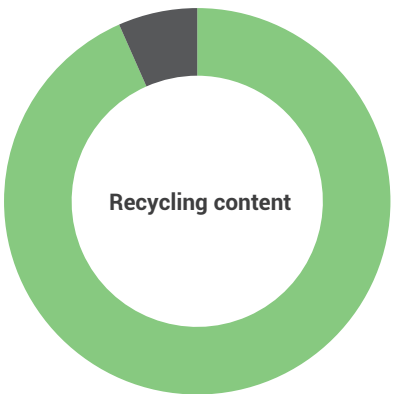
Materials		%
Aluminum		32
Metal		29
Plastic		18
Polyurethane		14
Miscellaneous		7
Total		16.0 kg

The materials we select meet high quality standards, guaranteeing durable and eco-friendly products.

At ICF, we use:

- Ecological and/or post-consumer recycled materials;
- Products free from formaldehyde and toxic substances;
- Finishes free from hexavalent chromium.

Each component of the seat can be disassembled for repair, reuse and recycling.



		%
Recycling		93
Not recycling		7

DSW Chair is a chair weighing approximately 16.0 kg and approximately 93% recyclable when completely and correctly separated.

DSW Chair is conceived in accordance with the guidelines of eco-design, a technical methodology applied during design of a product in order to reduce that product's carbon footprint and environmental impact.

Note:

Material and Recycling content percentages may vary depending on the specific model evaluated and consequently of the structural materials and finishes of the considered model.

The above sustainability contents refer to model DSW.504.

Certifications

- EN 1335-1:2020 Level A
- VOC Emission Test Report in compliance with DE-UZ 117, RAL GZ 430, EU Ecolabel, FEMB
- CAM
- Leed V4/V4.1 Beta
- Ansi Bifma section 7.6.1/7.6.2/7.6.3



ICF S.p.A.
Via Cassanese, 108
20052 Vignate (MI) Italy
+39 02 9508031 Tel.
+39 02 95364012 Fax
icf@icf-office.it

ICF Milano
P.tta U. Giordano, 2
20122 Milano, Italy
+39 02 76000583 Tel.
+39 02 7601395 Fax
icf@icf-office.it

www.icf-office.it