

Una Plus

Adaptive Monoframe



Una Plus Collection



Una Plus represents a significant leap forward in office seating design with its pioneering Adaptive Monoframe technology. This unique system features a flexible side frame crafted from a pliable polymer with exceptional elasticity and mechanical strength. The Adaptive Monoframe seamlessly integrates with the synchronized recline mechanism, creating a dynamic seating experience that adjusts fluidly to the user's movements.

The Adaptive Monoframe transcends traditional distinctions between upholstery and padding, as well as between seat and backrest. By unifying these elements into a single flexible suspension, UnaPlus redefines the aesthetic and functional qualities of office chairs. The result is a streamlined, modern design that offers unparalleled support and comfort.

Una Plus's suspension upholstery - available in mesh, fabric, or leather - features a memory effect that ensures consistent comfort throughout the day. This innovative material minimizes pressure points and evenly distributes weight, reducing pressure concentrations commonly found in conventional chairs. By adapting to the user's body, it provides a healthy and comfortable seating experience, making it ideal for prolonged use.

By combining the comfort of an ergonomic chair with the sophisticated design of a meeting or executive chair it offers the best of both worlds: ergonomic support and a refined look suitable for any modern office setting. The collection offers a versatile range with low, mid and high backrest versions.

The supporting structure is crafted from die-cast aluminum, a material known for its durability and timeless quality. The strong and flexible mesh suspension is made of an elastic monofilament interwoven with traditional fabric, provides superior breathability and heat exchange. The upholstered suspension features a highly resistant base layer with a thin polyurethane padding, available in both fabric and genuine bovine leather. This choice of construction and materials, along with its meticulously designed form, stands as a lasting investment, maintaining its high value during the years.



Chairs with 5 star base, painted structure and upholstery in mesh.



Chairs with 5 star base, chromed structure and upholstery in mesh.



Chairs with 5 star base, chromed structure and upholstery in leather.



Chairs with 5 star base, painted structure and upholstery in mesh.



Chairs with 5 star base, painted structure and upholstery in fabric.



Chairs with 5 star base, painted structure and upholstery in mesh.



Chairs with 5 star base, painted structure and upholstery in mesh.



Chairs with 5 star base, chromed structure and upholstery in fabric.



Chairs with 5 star base, painted structure and upholstery in mesh.

Una Plus | Technical Specification



Supporting structure: In die-cast aluminum with polished, chromed or painted finish. Side profiles with controlled deformation in techno-polymer with very high characteristics of resistance and flexibility. The specially designed construction sections guarantee maximum flexibility in all conditions of use and even after countless load cycles.

Seat and backrest: Seat and backrest formed from a single sheet of elastic material, tensioned over a perimeter structure. The elastic two-toned mesh (70% polyester elastomer, 30% polyester) load-bearing, flexible and totally breathable. The suspension in fabric or leather, sandwich-molded, has a series of characteristic horizontal stripes and optimally supports and distributes the user's weight. The leather covering includes an eco-leather back with predetermined color combinations.

Lumbar support (for UPL models only): Made of plastic material, it automatically increases the tension of the sheet allowing to improve the support of the spine. Adjustable in height with a stroke of 6 cm. It can be installed or removed at any time.

Armrests: Fixed armrests in polyamide. 3D armrests adjustable in height, width and depth. Optional leather upholstery. Available also without armrest.

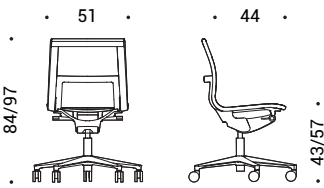
Height adjustment: Seat height can be adjusted a maximum of 14 cm with a lever. The gaslift complies to EN16955:2017.

Synchronised tilting mechanism: The Synchronized tilting mechanism instantly follows the user's movements. During the swing, the thrust intensity of the mechanism increases proportionally to ensure adequate support even in reclined positions. At the same time the front of the seat lowers slightly to reduce the pressure on the user's legs. The backrest can be locked vertically and in eleven intermediate positions. The mechanism is made of die-cast aluminum, with helicoidal balancing springs in harmonic steel.

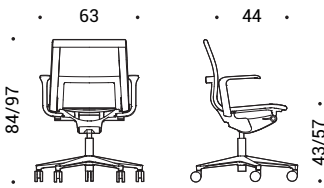
Base: Five star base on castors available in: die-cast aluminum with polished, chromed or painted finish depending on the structure or in black nylon.

Castors: In black plastic with soft running surface for use on any type of flooring and a load depending safety brake complies to EN 12529:2001. Diam. 65 mm.

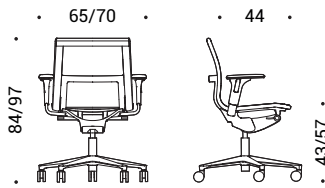
Dimensions



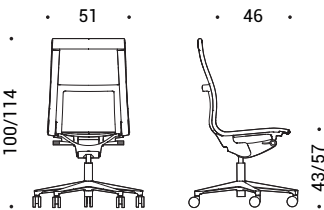
UPN.401 | Swivel chair, height adjustable, syncro tilting mechanism



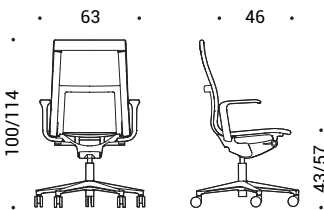
UPN.411 | Swivel chair, height adjustable, syncro tilting mechanism, fixed armrests in plastic material



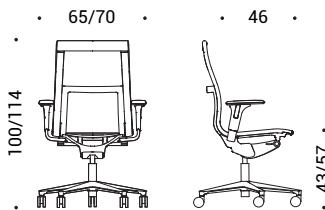
UPN.421 | Swivel chair, height adjustable, syncro tilting mechanism, 3D armrests



UPN.701 | Swivel chair, height adjustable, syncro tilting mechanism



UPN.711 | Swivel chair, height adjustable, syncro tilting mechanism, fixed armrests in plastic material



UPN.721 | Swivel chair, height adjustable, syncro tilting mechanism, 3D armrests

Product Finishes

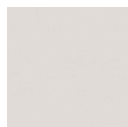
Aluminum Structure | Structure, base



47 | Polished



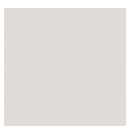
55 | Chromed

115 | Black
Powder coated095 | Grey
Powder coated100 | White
Powder coated

Plastic Material | Structure, base

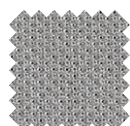
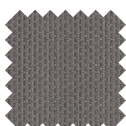
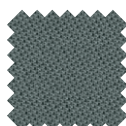
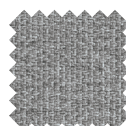
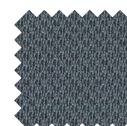
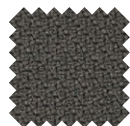
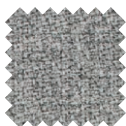
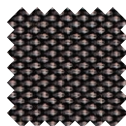
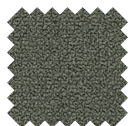


115 | Black

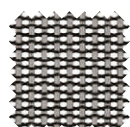


095 | Grey

Fabric

**Cat. B** | Atlantic
(17 colors)**Cat. B** | Mini
(7 colors)**Cat. B** | Tonal
(15 colors)**Cat. C** | Cura
(15 colors)**Cat. C** | Mini Melange
(9 colors)**Cat. C** | Sealife
(10 colors)**Cat. C** | Sotega
(5 colors)**Cat. C** | Step
(8 colors)**Cat. C** | Step Melange
(8 colors)**Cat. F** | Breeze Fusion
(5 colors)**Cat. F** | Grain
(10 colors)

Mesh

**Cat. X** | Elastic Mesh
(7 colors)

Leather

**Cat. E** | Leather
(15 colors)

Material Certifications

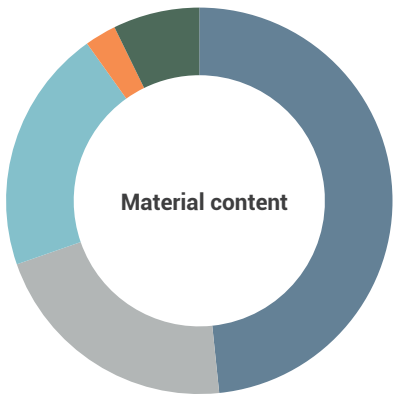
We use fabrics that guarantee high performance in terms of comfort, strength and sustainability. Attention to the health and safety of people and the environment are verified through globally-recognised product certification. Most of the upholstery we use for our seating collections is made from recycled materials which can also be reused at the end of their service life.







Sustainability

Our design and production philosophy is based on the pursuit of simplicity in order to create sustainable and durable collections. Our products have an unmistakable design which however is subjected to the carefull evaluation of any possible aspects to improve sustainability, durability and recyclability in accordance with the highest international standards. We believe that our responsible approach may effectively reduce environmental impact of our products throughout the entire lifecycle of the various components. We do not use chemicals hazardous or dangerous to the environment, and the materials we use are tested and evaluated for potentially harmful effects on human health and the environment. Where possible, we reduce packaging materials to a minimum, which also optimises transport volume.

Una Plus



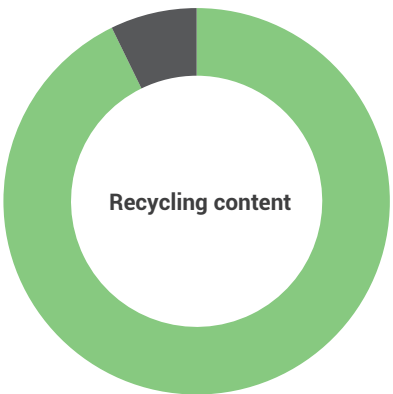
Materials		%
Aluminum		48
Plastic		21
Metal		21
Polyurethane		3
Miscellaneous		7
Total		15.2 kg



The materials we select meet high quality standards, guaranteeing durable and eco-friendly products.

At ICF, we use:

- Ecological and/or post-consumer recycled materials;
- Products free from formaldehyde and toxic substances;
- Finishes free from hexavalent chromium.

Each component of the seat can be disassembled for repair, reuse and recycling.



		%
Recycling		93
Not recycling		7

Una Plus is a chair weighing approximately 15.2 kg and approximately 93% recyclable when completely and correctly separated.

Una Plus is conceived in accordance with the guidelines of eco-design, a technical methodology applied during design of a product in order to reduce that product's carbon footprint and environmental impact.

Note:

Material and Recycling content percentages may vary depending on the specific model evaluated and consequently of the structural materials and finishes of the considered model.

The above sustainability contents refer to model UPN.721.

Certifications

- EN 1335-1:2020 Level B
- ANSI-BIFMA X5.1
- VOC Emission Test Report in compliance with DE-UZ 117, RAL GZ 430, EU Ecolabel, FEMB (Mini and Mini Melange upholsterys)
- VOC Emission Test Report in compliance with Agbb (Mesh upholstery)
- CAM (Mini and Mini Melange upholsterys)
- Leed V4/V4.1 Beta (Mini and Mini Melange upholsterys)
- Ansi Bifma section 7.6.1/7.6.2/7.6.3 (Mini and Mini Melange upholsterys)
- Fire retardant Class 1 IM (Mini, Mini Melange, Sotega and Leather upholsterys)
- Fire retardant Class 1 (Mesh upholstery)
- Technical Bulletin 133 (Mesh upholstery)



ICF S.p.A.
Via Cassanese, 108
20052 Vignate (MI) Italy
+39 02 9508031 Tel.
+39 02 95364012 Fax
icf@icf-office.it

ICF Milano
P.tta U. Giordano, 2
20122 Milano, Italy
+39 02 76000583 Tel.
+39 02 7601395 Fax
icf@icf-office.it

www.icf-office.it