

ADD LOUNGE | ad171

Francesco Rota | 2025



ADD LOUNGE

Francesco Rota | 2025

More than ten years after its debut, ADD continues to evolve with the same design coherence that has made it one of Lapalma's most recognisable and appreciated collections. Presented at Salone del Mobile 2026, the new ADD Lounge line expands the family designed by Francesco Rota with a proposal conceived to respond even more precisely to the needs of the contract world, particularly in the design of welcoming, flexible and well-defined lounge spaces.

The new development works through reduction and precision. Profiles become slimmer, the structure appears visually lighter and the overall character grows even more essential and contemporary, without sacrificing the comfort and constructional clarity that have always defined the system. This evolution gives rise to new configurations: alongside the two seater sofa, the collection now includes, for the first time, an armchair, further expanding the line's possibilities and introducing a more intimate mode of use, designed to offer a greater sense of privacy in shared environments.

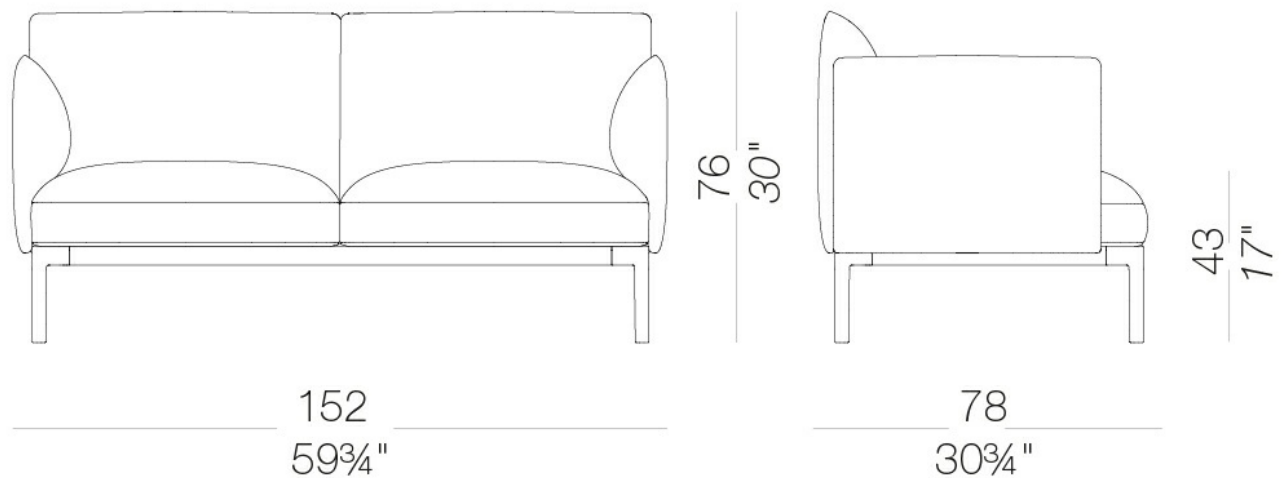


ADD LOUNGE

Francesco Rota | 2025

| ad171 two seater sofa

Two-seater sofa with extruded aluminium frame. Angled legs made of die-cast recycled aluminium, powder-coated. Seat, armrests and backrest are removable and made of fire-retardant moulded polyurethane foam with bonded polyester fibre. Upholstery available in fabric, leather or coated fabric.



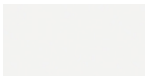
ADD LOUNGE | ad171

Francesco Rota | 2025

frame

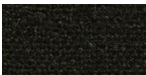


powder coating
black
1 Colors



powder coating
white
1 Colors

upholstery



fabric
Main Line Flax -
Grade. B
57 Colors



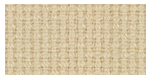
fabric
Blazer - Grade. C
77 Colors



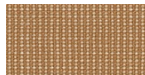
fabric
Chili - Grade. A
47 Colors



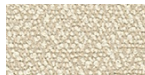
fabric
Umber - Grade. B
36 Colors



fabric
Nobel - Grade. C
30 Colors



fabric
Naveli - Grade. C
24 Colors



fabric
Fiocco - Grade. B
34 Colors



fabric
Atrium - Grade. C
16 Colors



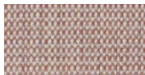
fabric
Panama - Grade. A
48 Colors



fabric
Sorrento - Grade. B
22 Colors



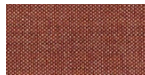
fabric
Hallingdal 65 - Grade
C
58 Colors



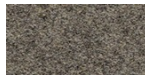
fabric
Canvas 2 - Grade C
45 Colors



fabric
Steelcut Trio 3 -
Grade D
54 Colors



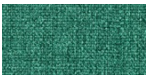
fabric
Remix 3 - Grade C
72 Colors



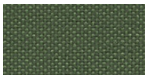
fabric
Divina MD - Grade D
27 Colors



fabric
Divina Melange 3 -
Grade D
38 Colors



fabric
Medley - Grade A
37 Colors



fabric
Maya - Grade A
43 Colors



fabric
Jet - Grade A
66 Colors



fabric
Fiord 2 - Grade C
39 Colors



fabric
Tonica 2 - Grade C
39 Colors



fabric
Capture - Grade B
60 Colors



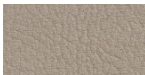
fabric
Crisp - Grade B
40 Colors



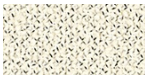
fabric
Iris - Grade B
34 Colors



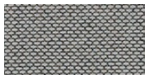
fabric
Steelcut 3 - Grade D
40 Colors



ecoleather
Valencia - Grade B
72 Colors



fabric
Grain - Grade. B
50 Colors



fabric
Re-wool - Grade C
25 Colors

ADD LOUNGE | ad171

Francesco Rota | 2025

consult the portfolio for the range of colors, fabrics, eco-leather, soft-leather.

use and maintenance instructions

Clean all parts in wood, leather, fabric and metal with a damp cloth or a diluted neutral cleaner. Do not use cleaners with alcohol, bleach, solvent or abrasive products. Any liquid spilt on the product must be wiped up immediately. When lifting or moving the product, hold it on the structure and not under the seat. The product should not be subjected to unbalanced weights, as it is designed for a proper rest on the foothold (on four legs or on the base). Our company relieves from any responsibility in case of damage caused to fragile floors. Avoid any improper use of the product: do not step on the product, on the footrest or on the armrests. Avoid any movements that could compromise the proper functionality of the product or the safety of the users. Wood and leather, being natural materials, could be easily damaged. Small impurities or imperfections are within quality standard range. Do not expose the product to weather conditions or atmospheric agents, nor to heat sources over 40°C. Also products for outdoor use could be afflicted by atmospheric agents. The product could undergo possible exterior changes due to particular exposure to heat, humidity and saltiness. An appropriate and frequent maintenance and cleaning of the product enhances its durability. The product could change colour and shade, if exposed to direct sunlight. Maintenance has to be carried out by experienced staff. Dispose of the package only after assembling the product, in order to avoid the loss of ironmongery and components. Once the product has been dismantled, the product itself or its components must be given to the public garbage disposal system, according to the legislation in force.