

Product sheet

Grace

chair

Technical Data

- Seat, backrest – moulded foam, upholstered;
- Chair GRP4: 4-star, aluminum, powder coated, swivel seat – 360°, aluminium cast, legs finished with polypropylene feet;
- Chair GRP4K: 4-star, aluminum, powder coated, swivel seat – 360°, aluminium cast, castors for soft floors, OPTION WITH EXTRA CHARGE – castors for hard floors;
- Chair GRP5: 4-legged, metal, powder coated, legs made of tube Ø18 mm, legs finished with polypropylene feet;
- Chair GRP6: 4-legged, metal frame filled with foam, upholstered, front legs Ø16mm diameter, rear legs Ø18mm diameter, legs finished with polypropylene feet;
- Base GRP9: beechwood coated with transparent varnish, 4 wooden legs, Ø35 mm;
- Dimensions: GRP4: 552 x 519 mm, h. 774 mm; GRP4K: 552 x 519 mm, h. 771 mm; GRP5: 552 x 506 mm, h. 760 mm; GRP6: 552 x 506 mm, h. 758 mm; GRP9: 551 x 514 mm, h. 748 mm

Selected configuration

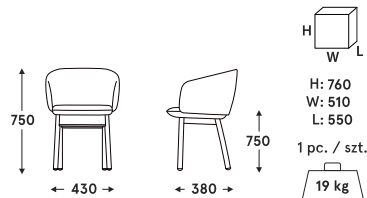
GRP9

Base colour: Black beech

Fabric: Mica – 100% polyester

Colour: MC-12 Yellow

Weight: 19kg



Sustainability

- Sustainable production – we are not indifferent to the environmental impact of our furniture, therefore we provide the essential information on the life cycle of our products through the Environmental Product Declarations (EPD).



Guarantee

.mdd products – 5 years.

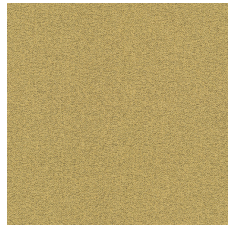
Electrical components and fabric – 2 years.

Certificates



Fabric technical data

Mica



Material	post-consumer recycled polyester 97%, polyester 3%
Weight	305g/m2
Abrasion resistance rub	60,000 cycles Martindale, EN ISO 12947-2
Colour fastness to light	scale 1-8, max. 8 - EN ISO 105-B02, 5-8
Pilling resistance	scale 1-5, max. 5 - EN ISO 12945-2 EN ISO 12945-2, 4-5
Colour fastness to rubbing	dry: 4-5, wet: 4-5, scale 1-5, max. 5 - EN ISO 105x12
Flammability	CA TB 117-2013 ASTM E 84 class I BS EN 1021-1 cigarette BS EN 1021-2 Match BS 476 part 7 class I