



Apelle Sideboard

design Beatriz Sempere, 2013

Sideboard made with lacquered metal base. Wooden structure available in various finishes, drawer and doors in hide or Tuscan hide.



Colors and Materials

Structure



Light blue steel



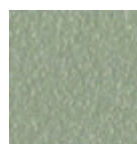
White steel



Ocean blue steel



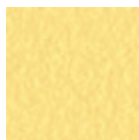
Bronze Steel



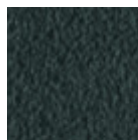
Sand steel



Fango steel



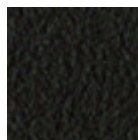
Pastel yellow steel



Grafite steel



Light grey steel



Brown steel



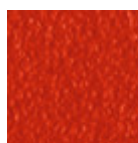
Black steel



Ocher steel



Facepowder pink steel



Red steel

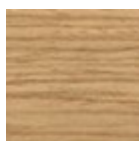


Sage green steel

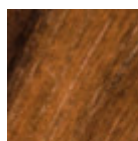


Black Nickel

Coating



Lacquered veneered wood



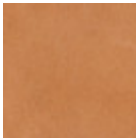
Veneered flamed walnut

9 Colors

Extensions



Hide
20 Colors



Tuscan hide
3 Colors

Dimensions

Dimensions

Volumetric Details

Weight 40 Kg
Volume 0.55 mc
Package 1

Image not found or type unknown

	cm	inch
A	82.5	32.5
B	135	53.1
C	43.8	17.2

Materials Certifications

Lacquered veneered wood

FEATURES AND PLUS

The veneered tops are the result of a process of bonding of thin wooden sheets, obtained by the horizontal rotary cut of the trunks applied to various types of supports to produce furniture elements, which look similar to solid wood but with better performance in terms of resistance to woodworms, lightness and more stability over time.

MAINTENANCE

For the regular cleaning schedule of stained veneered tops, use a damp cloth with mild soap diluted in water or specific products. Dry with a cloth or absorbent paper. Do not use abrasive products. . In case of accidental release of liquid substances, dab immediately the surface with absorbent paper or a dry, clean cloth. Avoid proximity to heat sources. Expose the veneered wood surfaces to light, for example by opening periodically the extensions of the tables that are placed inside the structures, or by moving any objects such as vases and accessories generally resting on the top.