



Lea CT-S Coffee Table

design Paolo Vernier, 2019

Lea coffee table with four legs base in lacquered steel. Top in wood or ceramic.

The Lea coffee table is available in three different sizes and is suitable for overlapping games. Pure and essential in shape, the Lea coffee table is perfect alone or in the original compositions of interlocking tops. Different sizes and materials create a versatile furniture solution, capable of adapting to every need and interior style.

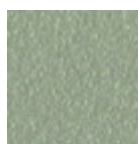


Colors and Materials

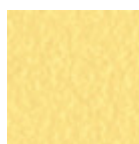
Structure



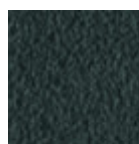
White steel



Sand steel



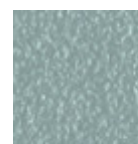
Pastel yellow steel



Grafite steel



Black steel



Light blue steel



Ocean blue steel



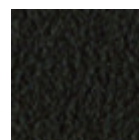
Bronze Steel



Fango steel



Light grey steel



Brown steel



Ocher steel



Facepowder pink steel



Red steel



Sage green steel



Pink Gold

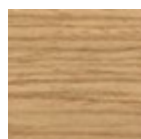


Black Nickel

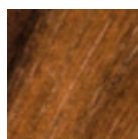


Golden bronze

Coating



Lacquered veneered wood



Veneered flamed walnut

9 Colors

Dimensions

Volumetric Details

Weight 8.5 Kg
Volume 0.10 mc
Package 1

Image not found or type unknown

	A (cm) (inch)	B (cm) (inch)	C (cm) (inch)
CT-S (cm) (inch)	40 15.7	51 20.1	51 20.1
CT-M (cm) (inch)	40 15.7	65 25.6	45 17.7
CT-L (cm) (inch)	34 13.4	108 42.5	39 15.4

Downloads

- .dae [Lea CT-S \(zip\)](#) - <https://www.midj.com/images/uploads/resources/3d-midj-lea-ct-s-dae.zip>
- .dxf [Lea CT-S \(zip\)](#) - <https://www.midj.com/images/uploads/resources/3d-midj-lea-ct-s-dxf.zip>
- .obj [Lea CT-S \(zip\)](#) - <https://www.midj.com/images/uploads/resources/3d-midj-lea-ct-s-obj.zip>
- .stl [Lea CT-S \(zip\)](#) - <https://www.midj.com/images/uploads/resources/3d-midj-lea-ct-s-stl.zip>
- .3ds [Lea CT-S \(zip\)](#) - <https://www.midj.com/images/uploads/resources/3d-midj-lea-ct-s-3ds.zip>

Materials Certifications

Lacquered veneered wood

FEATURES AND PLUS

The veneered tops are the result of a process of bonding of thin wooden sheets, obtained by the horizontal rotary cut of the trunks applied to various types of supports to produce furniture elements, which look similar to solid wood but with better performance in terms of resistance to woodworms, lightness and more stability over time.

MAINTENANCE

For the regular cleaning schedule of stained veneered tops, use a damp cloth with mild soap diluted in water or specific products. Dry with a cloth or absorbent paper. Do not use abrasive products. . In case of accidental release of liquid substances, dab immediately the surface with absorbent paper or a dry, clean cloth. Avoid proximity to heat sources. Expose the veneered wood surfaces to light, for example by opening periodically the extensions of the tables that are placed inside the structures, or by moving any objects such as vases and accessories generally resting on the top.