



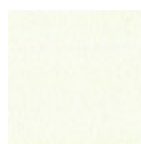
Paul Ø120 Extendable Table

Extendable table with steel base. Wooden or crystalceramic top, matching extensions.



Colors and Materials

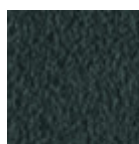
Structure



White Steel



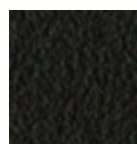
Sand Steel



Grafite Steel

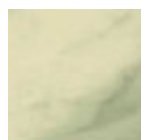


Black Steel

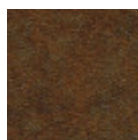


Brown Steel

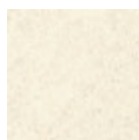
Coating



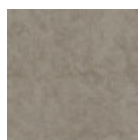
Crystalceramic with effect calacatta marble



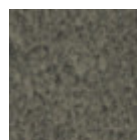
Corten Crystalceramic



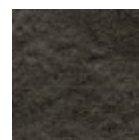
Oxide White Crystalceramic



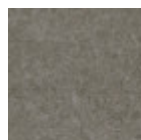
Oxide Sand Crystalceramic



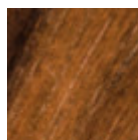
Lead Crystalceramic



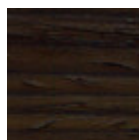
Charcoal Savoia Crystalceramic



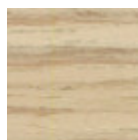
Cement Savoia Crystalceramic



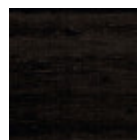
Veneered Flamed Walnut



Veneered Wood Dark Oak

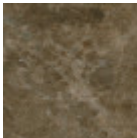


Veneered wood light oak

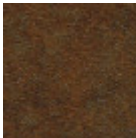


Black Lacquered Veneered Wood

Extensions



Emperador Marble
Crystalceramic



Corten
Crystalceramic



Oxide White
Crystalceramic



Oxide Sand
Crystalceramic



Lead Crystalceramic



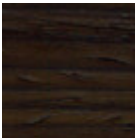
Charcoal Savoia
Crystalceramic



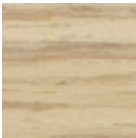
Cement Savoia
Crystalceramic



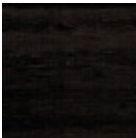
Veneered Flamed
Walnut



Veneered Wood
Dark Oak



Veneered wood light
oak



Black Lacquered
Veneered Wood

Dimensions

Dimensions

Volumetric Details

Weight 51 Kg
Volume 0.75 mc
Package 3

Image not found or type unknown

	cm	inch
A	75	29.5
B	120	47.2
C	120	47.2
D	180	70.9