



# Calla DS PP Chair

design Fabrizio Batoni, 2019

Calla swivel and height-adjustable chair on wheels. Five-star base in lacquered steel and seat in polypropylene. Optional: fixed cushion for the seat. The task chair is also available in the armchair version with armrests, in plastic and covered.



## Colors and Materials

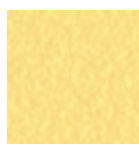
### Structure



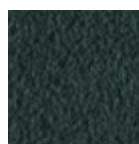
White Steel



Sand Steel



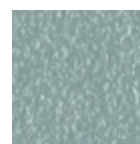
Pastel Yellow Steel



Grafite Steel



Black Steel



Light blue steel



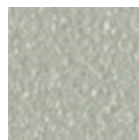
Ocean Blue Steel



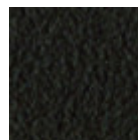
Bronze Steel



Fango Steel



Light Grey Steel



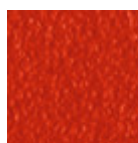
Brown Steel



Ocher Steel



Facepowder Pink Steel



Red steel



Sage Green Steel



Chrome

### Coating



Polypropylene

9 Colors

### Extensions



**Bubble Fabric**  
14 Colors



**Carabù Fabric**  
15 Colors



**Cotton Club Fabric**  
13 Colors



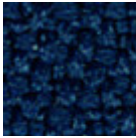
**Fenix Wool Fabric**  
13 Colors



**Hot Fabric**  
14 Colors



**Main Line Flax Fabric**  
16 Colors



**Mirage Fabric**  
6 Colors



**Scubidù Fabric**  
10 Colors



**Second Fabric**  
11 Colors



**Visual Fabric**  
11 Colors



**Velvet Superb**  
15 Colors



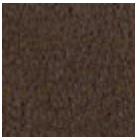
**Secret Faux Leather**  
22 Colors



**Vintage Faux Leather**  
12 Colors



**Fiore Leather**  
18 Colors



**Vintage Leather**  
4 Colors

## Dimensions

Dimensions

## Volumetric Details

**Weight** 9.5 Kg  
**Volume** 0.27 mc  
**Package** 2

Image not found or type unknown

	cm	inch
A	78/88	30,7/34,6
B	58	22,8
C	55	21,7
D	46/56	18,1/22