

**B**



**L**



**line**

**e**

**CARTELLA TESSUTI  
/ FABRIC REFERENCE CHART**



**PT** PATIO KVADRAT  
100% Trevira CS



**VG** GORGEOUS FLUKSO  
100% PES FR – Trevira CS

**HE** HERO KVADRAT  
96% Lana vergine / New wool  
4% Nylon

**RX** REMIX 2 KVADRAT  
90% Lana vergine / New wool  
10% Nylon

**ST** STEELCUT TRIO 3 KVADRAT  
90% Lana vergine / New wool  
10% Nylon

**LN** PANAMA DANI  
100% Pelli bovine europee /  
European cow hides

**FP** PLATINUM FLUKSO  
82% PVC  
18% PES

**G** GEMMA S PUGI RG  
100% Poliestere – Trevira CS /  
Polyester – Trevira CS



TPT220



TVG2153



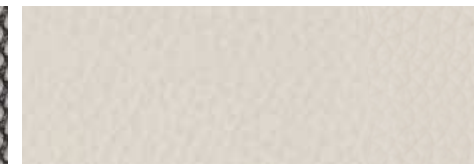
THE211



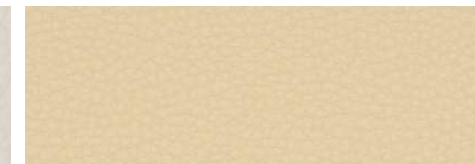
TRX123



TST133



LN5506



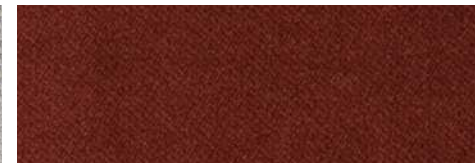
TFP5



TG203



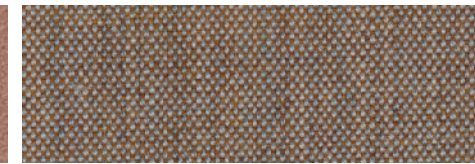
TPT150



TVG2112



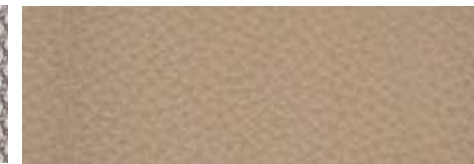
THE311



TRX242



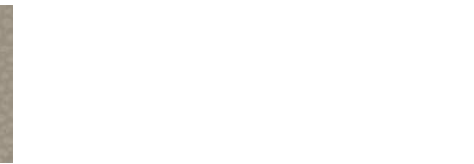
TST205



LN5320



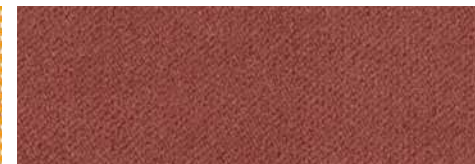
TFP12



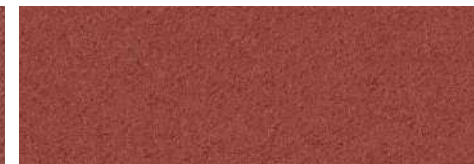
TFP5



TPT450



TVG2113



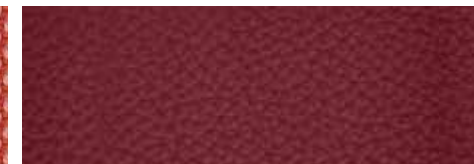
THE541



TRX653



TST526



LN5210



TFP30



TFP15



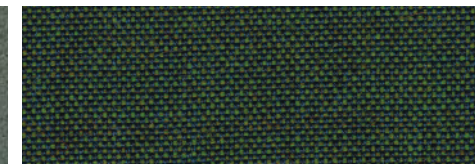
TPT970



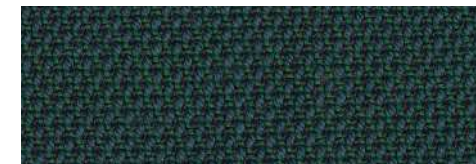
TVG2131



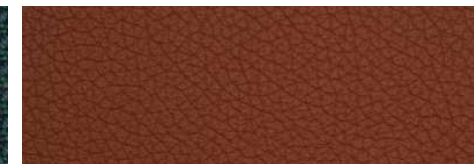
THE931



TRX982



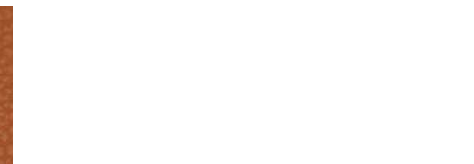
TST976



LN5080



TFP22



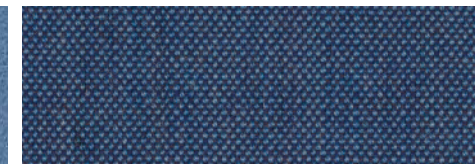
TFP23



TVG2128



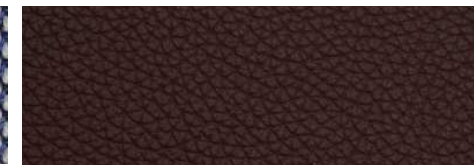
THE711



TRX762



TST716



LN5220



LN5300



TG651

Utilizzabile all'esterno/  
Can be used outdoors



**SPECIFICHE TESSUTI  
/ FABRIC FEATURES**

**Patio  
Kvadrat**

560 g/mtl / g/lin.m  
50.000 Martindale

resistenza alla luce 7  
/ lightfastness 7  
EN ISO 105 B04  
EN ISO 105 B02



**Gorgeous  
Flukso**

450 g/mq / g/sqm  
100.000 Martindale



**Hero  
Kvadrat**

580 g/mtl / g/lin.m  
45.000 Martindale



**Remix 2  
Kvadrat**

415 g/mtl / g/lin.m  
100.000 Martindale



**Steelcut Trio 3  
Kvadrat**

770 g/mtl / g/lin.m  
100.000 Martindale



**Panama  
Dani**

sp / thk 1,0-1,2 mm

resistenza allo strappo  
/ tear resistance  
20 N | EN ISO 3377 -1

resistenza alla flessione  
/ flex resistance

nessuna rottura  
in 50.000 cicli  
/ no damage  
in 50.000 cycles  
EN ISO 5402

**Platinum  
Flukso**

650 g/mq / g/sqm  
100.000 Martindale



**Gemma S  
Pugi rg**

400 g/mtl / g/lin.m  
40.000 Martindale



**B—Line**

© - B-Line S.r.l.  
Via Galileo Galilei, 13/B - 35030 Sarmeola di Rubano – Padova ITALY  
Tel +39 049 8978245 — info@b-line.it  
b-line.it — facebook.com/bline.it — instagram.com/b\_line\_it