

Downloading the App

The app is called Desk Control Basic and has the following app logo in App and Google Play store:



How to download the App for iOS

Step 1:

Please use your Apple device to log into App store

Step 2:

Type "Desk Control Basic" in the search column

Step 3:

Select the "Desk Control Basic" app

Step 4:

Click install to download the app to your device

How to download the App for Android

Step 1:

Please use your Android device to log into Google Play Store

Step 2:

Type "Desk Control Basic" in the search column

Step 3:

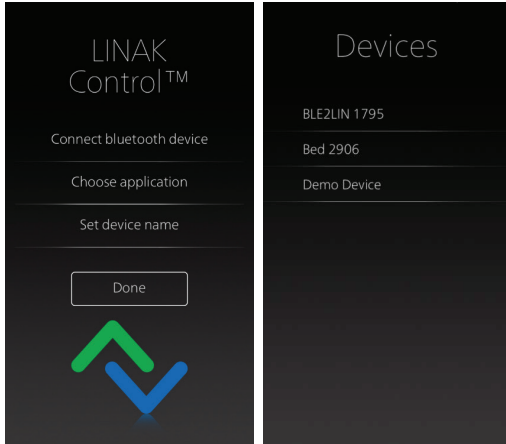
Select the "Desk Control Basic" app

Step 4:

Click install to download the app to your device

Pairing Bluetooth® and get started

To get a functional app, you have to purchase the LINAK Bluetooth® Adapter.
The adapter must be plugged into the DESKLINE control box and it will blink and be in pairing mode for 3 minutes.



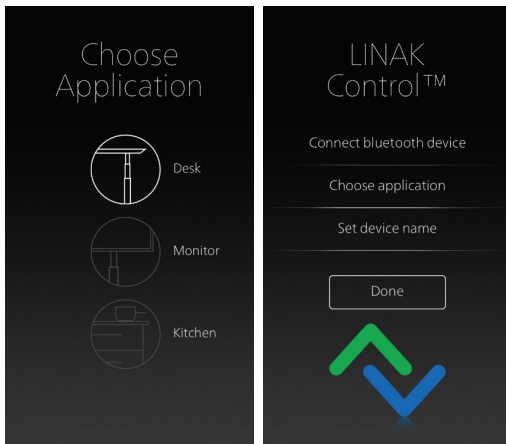
Open the Desk Control Basic app. Press “Connect Bluetooth device” and a list of LINAK Bluetooth® Adapters will be visible, click the one to which you want to pair:

Meaning of the Bluetooth® logo:

- Blue: Paired
- White: Available for pairing
- Grey: Previously paired, but out of range

Demo: By selecting demo device, you will get access to explore the Desk Control Basic app, but without connection to a product.

All devices will be called BLE2LIN followed by a 4-digit number.



After connecting the Bluetooth Adapter, you are to choose the application in the app that matches your application, e.g. choose kitchen if your application is BASELIFTS mounted in a kitchen island.
Next, it is possible to set the name for the application. By clicking done, you are now directed to the landing page, from where you can control your application. See instructions on the next page.

Application pages in the App

The app supports three different product applications; you are to choose the right one for your product during the setup. This means that this app has three different control pages. See below. The choice of application leads you to the correct control page. The number of features depends on the choice of product application.

Kitchen as application

- Up/down drive
- Height displayed
- Error codes

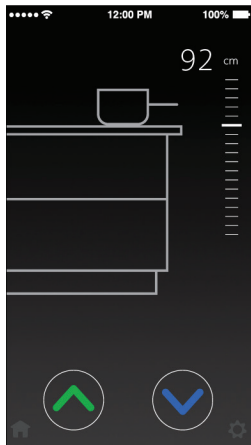
Monitor stand as application

- Up/down drive

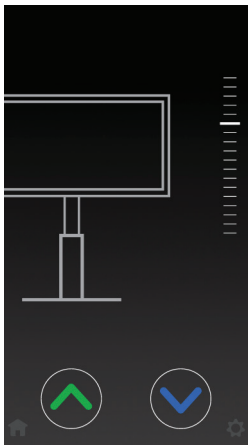
Desk as application

- Up/down drive
- Height displayed
- Error codes
- 2 memory positions

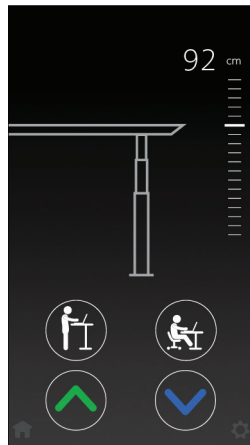
Kitchen



Monitor stand

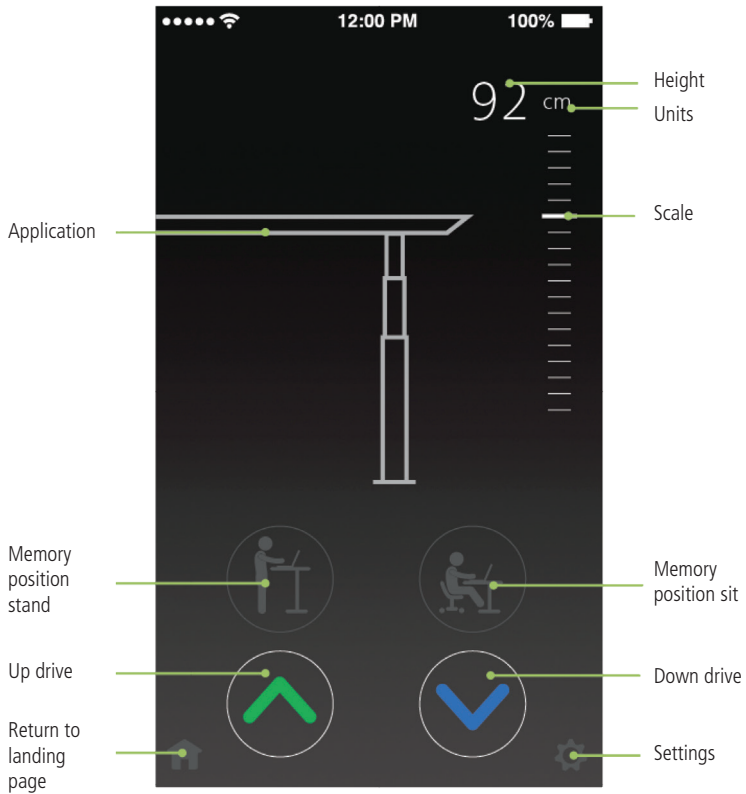


Desk



How to use the App

The desk page has the highest number of features, which is why it is shown below.



Buttons/Graphics

Application

Here is a contour of the application shown. This is for desks. A kitchen island is shown for kitchens and a monitor is shown for display and monitor stands.

Up drive

Moves the application upwards while pressing and holding the button

Down drive

Moves the application downwards while pressing and holding the button

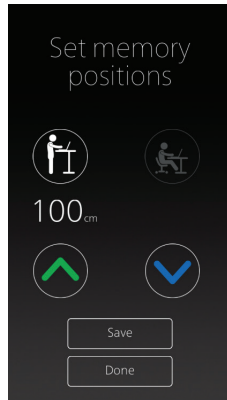
Memory positions

2 stored positions can be directly accessed by pressing the corresponding button. The buttons are greyed out until they are set. By pressing the greyed out button, you will be directed to the "set memory positions"-page. Once set, the buttons will become white. By pressing and holding the memory button, the application will take you to your preferred position.

If you enable automatic drive in the "settings" menu, you can just press the memory button once and the application will drive to the stored position without you holding the button. Please observe, by enabling automatic drive, the user accept the responsibility and danger, that can occur under these circumstances.



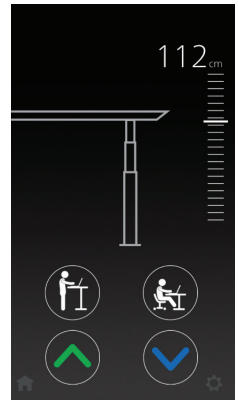
Memory positions not saved



Page for setting up the memory positions. Click the sit or stand icon – run desk to preferred height and save.



Stand memory saved and can be directly accessed from this page



Both memory positions saved and can be directly accessed from this page

House button

The house button will take you back to the landing page, from where you can pair to a new Bluetooth® adapter or change the settings of the currently paired adapter.

Settings

Settings will provide you a list of choices:

- Set the current height of the product (Not available in monitor stands)
- Choose in which units you want the height in, cm or inches.
- Change the app name of the paired product
- Set the memory positions (Desk only)
- Set the language for the app (8 different languages)
- Enable automatic drive (Desk only). The user has to accept the terms in the pop-up, before this feature can be enabled.

Height

The height is shown for desks and kitchens as applications. You can change the units in settings.

Error codes

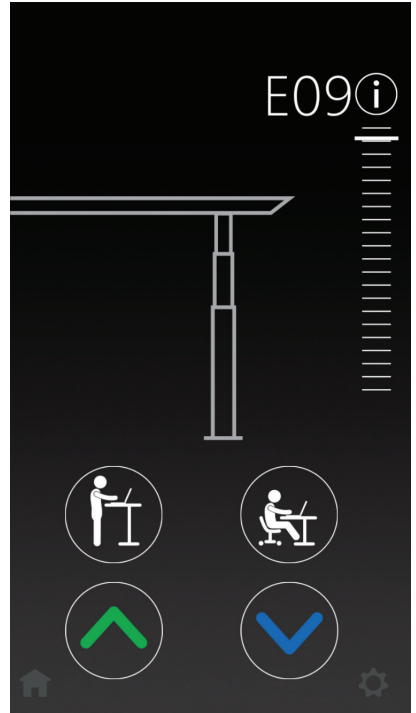
When an error occurs, the height will be replaced by the error code. For instance when driving the desk through the app and pressing the desk panel on the desk, E09 will occur. By clicking the i-symbol the app will lead you to the support page for DPF1C on linak.com.

Scale

The scale is only a visual feature. The visual minor tick marks of the scale are %-steps of the full 100% scale. The minimum of the scale is always fixed to zero %. The maximum is default set to 100%. If the current height value exceeds the maximum, the maximum is set to new maximum value and stored in the app for that specific BLE device. So the visual tick mark will move during your use of height adjustment. Once you have adjusted to both end positions (top and bottom) the scale will be accurate.

Please observe!

The paired Bluetooth Adapter can be renamed in the apps via the landing page or the settings screen. The renaming will only affect the local name in the smartphone, not in the adapter.

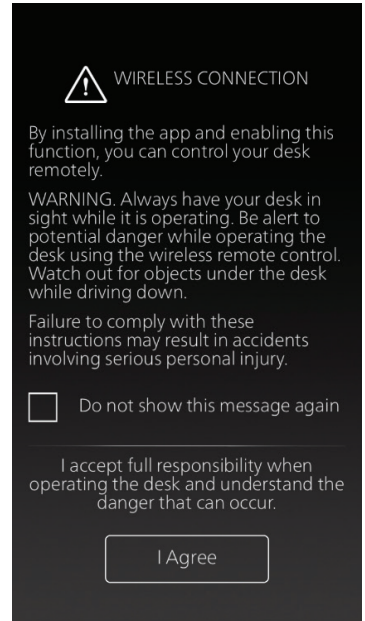


Safety

To ensure safety while driving a desk wirelessly, the Desk Control Basic app has two pop-up warnings explaining the user the danger that can occur.

Wireless connection

To ensure the user understand the danger of running a desk via a wireless connection, the app will show a warning page whenever the app is started. The user must agree to the terms to get access to the rest of the app. You can choose "Do not show this message again" in the warning page to stop it from showing every time the app is started.



Automatic drive

When enabling "Automatic drive" a pop-up warning will appear. The user has to accept the full responsibility for enabling automatic drive on memory functions. If the user agrees, automatic drive will be enabled and the slider will turn green. If the user cancels the operation, the slider will stay grey and memory positions has to be pressed until the position is reached.

