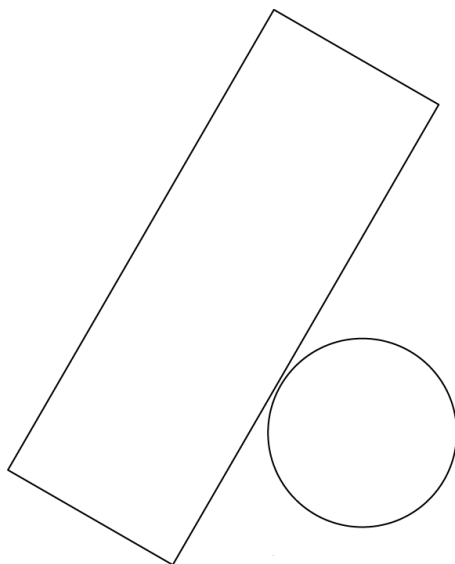


## SAWARU

Designed by Nendo, 2018

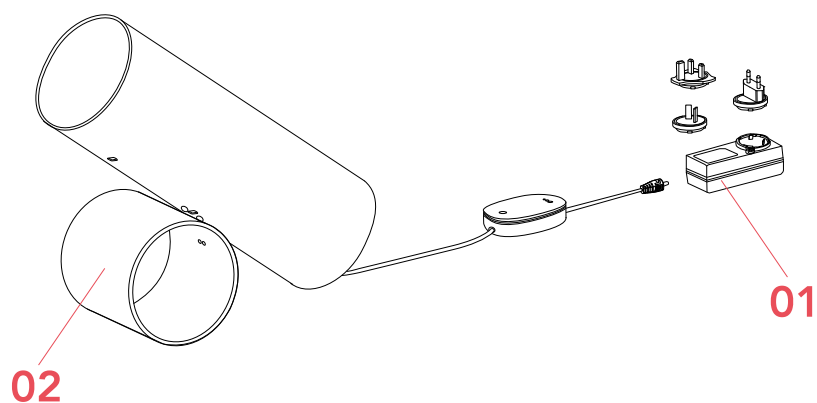
F6640030



## SAWARU

F6640030

EN



**01. RF3320400** – Black Plug kit & driver

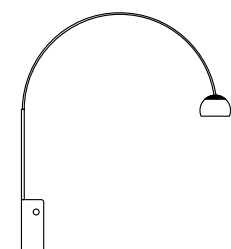
**02. RF6640200** – Black base

SAWARU F6640030

EN

## RF3320400

POWER SUPPLY UNIT WITH PLUG KIT



Arco Led  
p.03



Captain  
Flint  
p.05



Noctambule  
F  
p.15



Sawaru  
p.03



Superloon  
p.13



Taccia  
Led  
p.13

**WARNING!** When installing and whenever acting on the appliance, ensure that the power supply has been switched off.  
For the installation of the spare-part, it is necessary to consult a qualified electrician.

SAWARU F6640030

EN

**RF3320400**

POWER SUPPLY UNIT WITH PLUG KIT

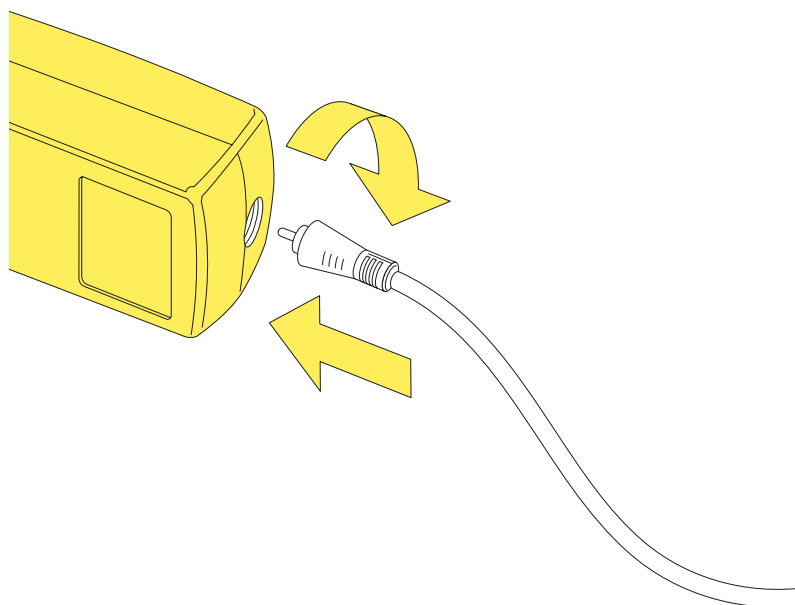


Fig.2

Insert the plug into the power unit. By using the guides, snap the plug inside its apposite slot (use the correct type of plug for the country in which the device must be installed).

WARNING! When installing and whenever acting on the appliance, ensure that the power supply has been switched off.  
For the installation of the spare-part, it is necessary to consult a qualified electrician.

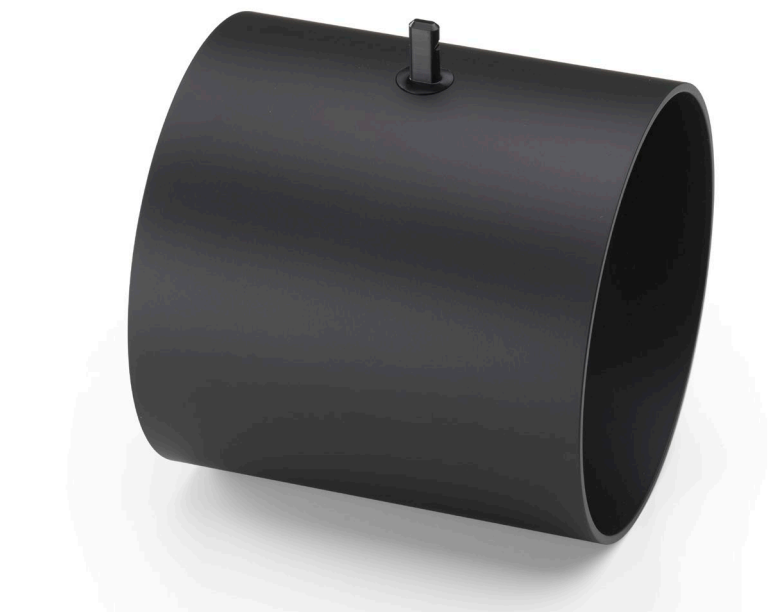
©2021 Flos - All rights reserved - [www.flos.com](http://www.flos.com)  
Flos reserves the right to introduce any changes to its own models, without prior notice.

SAWARU F6640030

EN

## RF6640200

BLACK BASE



WARNING! When installing and whenever acting on the appliance, ensure that the power supply has been switched off.  
For the installation of the spare-part, it is necessary to consult a qualified electrician.

©2021 Flos - All rights reserved - [www.flos.com](http://www.flos.com)  
Flos reserves the right to introduce any changes to its own models, without prior notice.

SAWARU F6640030

EN

## RF6640200

BLACK BASE

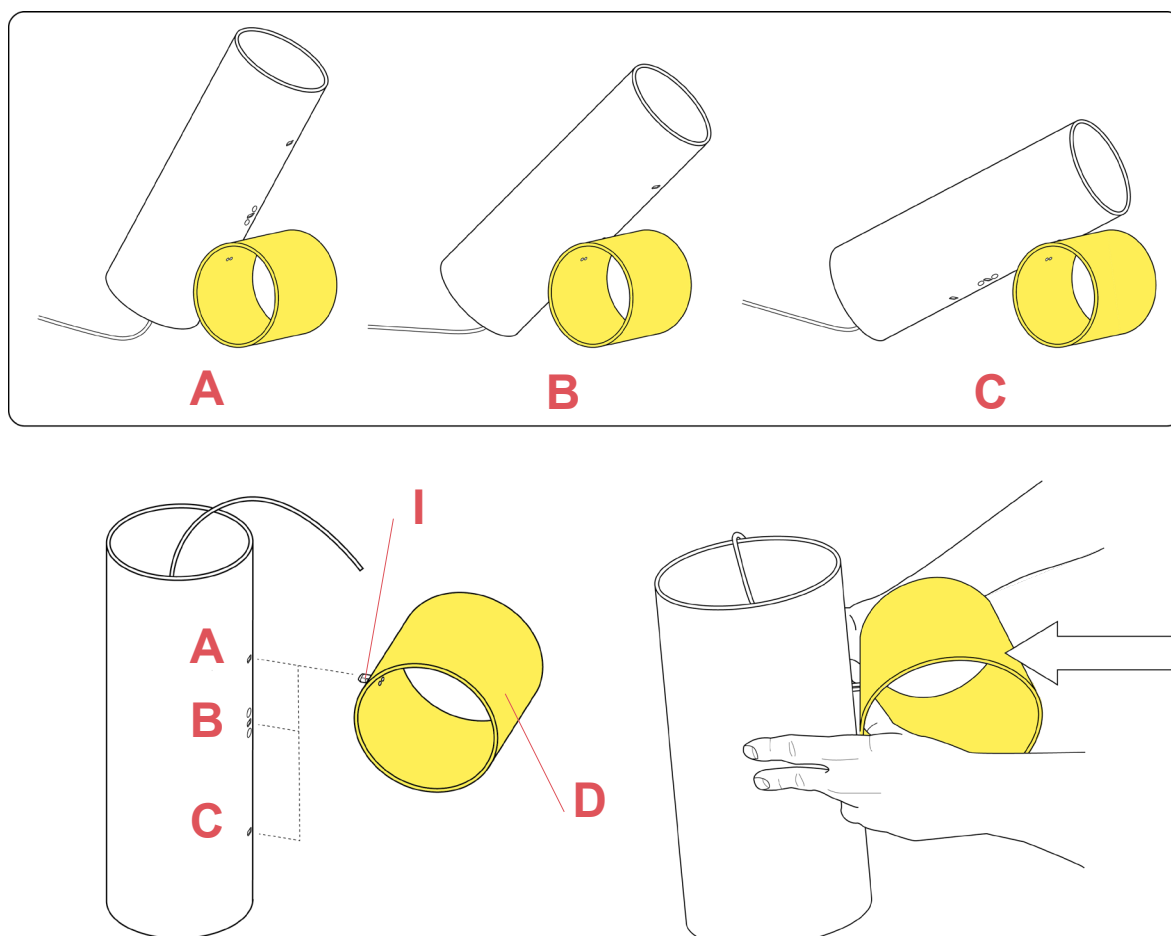


Fig.1

Choose the device's working position from one of the three provided, then insert the pin (I) of the base (D) into the hole in the body chosen. Gripping the base with both hands as indicated in the figure so that the pin is properly centred with respect to the hole.

**WARNING!** When installing and whenever acting on the appliance, ensure that the power supply has been switched off.  
For the installation of the spare-part, it is necessary to consult a qualified electrician.