

MOTION



SIT-STAND DESK SYSTEM MOTION

OPERATION MANUAL



2 level columns: 645-1145 mm
3 level columns: 600-1250 mm

SAFETY AND WARNINGS

Inappropriate use of this product may cause property or bodily injury.

Check surroundings on all sides before using the desk. Do not place any objects taller than 580 mm (3 level columns) or 625 mm (2 level columns) under the desk or frame.

Ensure the length of power cords are accounted for when operating the desk. Monitors, computers, speakers, anything with a cord that is not long enough for the desk's range of motion could be pulled down or have its wires broken. Check that no cables can get jammed.

Desks should not be used in environments with high humidity or dampness.

If you need to move the desk, DO NOT lift it only by holding the desktop. Lifting this way can stress the fasteners connecting the frame to the desktop.

Please provide this operation manual to any users, installers, or support personnel operating the product.

USAGE

The desk height is adjustable so the desktop can be fixed for most suitable user's position. These desks are designed only for ergonomic sit-stand position.

Do not move around, crawl or lie under the desk frame.

Do not sit or stand on the desk frame or desktop.

Any other use is at user's risk.

SETUP AND INSTALLATION

Choose a placement for the desk that is a safe distance from window frames, radiators, furniture etc.

Once the desk has been assembled, adjust the feet so that the desk is level and does not shift its position.

After this, connect the desk to the outlet and the desk

is ready for use. **For the first start of desk please press and hold "down" button for control box activation.**

TROUBLESHOOTING

If your desk does not function properly (does not go up or down; does not move at all) please do the RESET:

- Press and hold "Down" button for 5 seconds.

This will reset control box of columns.

- Now the desk is ready for use.

If this does not work please contact your seller.

IMPORTANT

80
KG

Functional load of desk is 80 kg.
Do not exceed this given load.

1
MIN

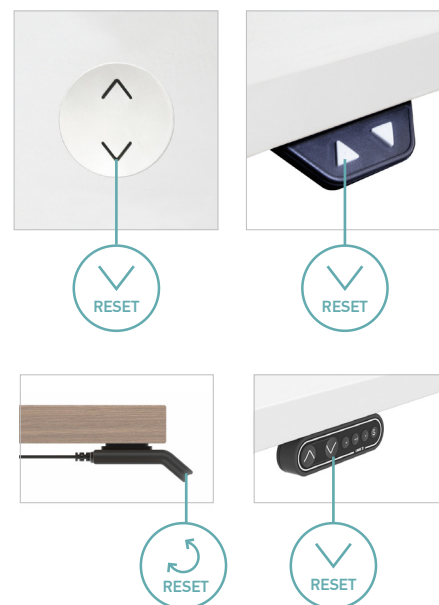
! Please keep in mind that time for continuous desk movement upwards or downwards is 1 minute.

9
MIN

After 1 minute of unstopped operation there has to be a resting period of 9 minutes.

38
MM/S

Travel Speed Up to 38 mm/s.



TROUBLESHOOTING FOR MOTION, EASY, ONE AND JAZZ SYSTEMS

Symptom	Check	Try
The desk does not run	Is the main connected to the control box?	Try to connect a lamp or similar to the main supply to check that the supply voltage is OK
	Are all plugs mounted correctly in the control box and to the leg? <i>See assembly instruction</i>	Check all connections
	Are there any visible damages on cables, controls, the control box or legs?	Damaged parts must be exchanged – contact Service
The desk stops and can only run in the opposite direction	Is the desk in fully extracted position?	When the desk has reached its upper position it can only run downwards
	Is there much load on the desk compared to when the desk functioned normally?	Remove some of the load and try again
The desk will only run downwards even though the desk is not overloaded		Perform RESET
The desk does not run with full stroke length upwards. Always stops at the same position		The system has set a new endstop outwards. Perform RESET to remove this stop
The desk does not run at all. No movement is observed	Defective handset or control box. Poor connection. Mains cable fallen out. No voltage on the mains cable.	Check all connections. Check that there is voltage in the mains plug. Connect a handset that you know is OK. If it can run the handset is defective. If this does not help the control box is defective.
Not all legs run when you run the desk downwards	The leg(s) that do not run are defective or the cable connection for the leg(s) are not OK	Change leg/cable, starting with the cable
The desk is in lower position and will not run up. You cannot see whether all legs are moving	The desk is overloaded	Remove some of the load on the desk
	One or more legs are defective or the cable connection between leg(s) and control box is not OK	Remove all motor cables from the control box. Mount one leg at a time in channel 1, perform RESET and hereafter run a bit upwards. If a leg will not run upwards after RESET it is defective. Try to exchange the motor cable before exchanging the leg.

RESET:

Push the arrow downward button. The legs run in bottom position and keep the pressure on the button for min. 6 seconds after all legs have reached bottom position. At certain error types this must be done twice in succession. Now the desk is in initial position.