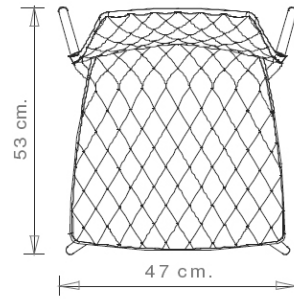
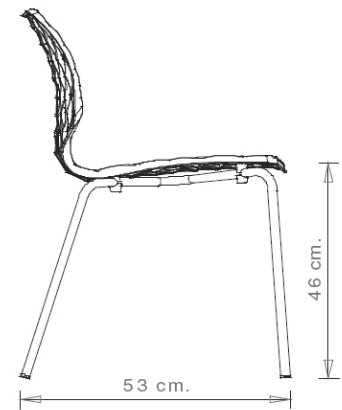
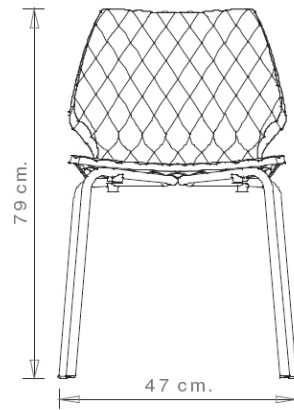


Uni 550

UNI COLLECTION:

Uni 550, Uni 550M, Uni 378, Uni 378M, Uni 378B, Uni 378B-M, Uni 380, Uni 380M, Uni 380B, Uni 380B-M, Uni 562, Uni 562M, Uni 386, Uni 386M, Uni 602, Uni 602M, Uni 603, Uni 603M, Uni 551, Uni 551M, Uni 552, Uni 552M, Uni 552G, Uni 552M-G, Uni 552T, Uni 552G-T, Uni 558-DP, Uni 558M-DP, Uni 558-DR, Uni 558M-DR, Uni 553, Uni 553M, Uni 577, Uni 577M, Uni 544, Uni 565, Uni 391, Uni 391M, Uni 393, Uni 393M, Uni 220, Uni 221, Uni 222, Uni 223, Trolley 536,



Chair with steel frame, 4 legs. Polypropylene shell.

STACKABLE

8

WEIGHT

4,6 kg

PACK

0,36 m³

PIECES PER BOX

5

FINISHES SEATING

PP POLYPROPYLENE



RAL 9016 Traffic white



NCS S2060-B Azure



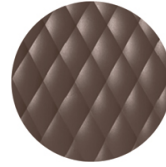
RAL 3000 Flame red



RAL 7016 Anthracite
grey



RAL 2003 Pastel
orange



NCS S7005-Y50R
Cocoa



RAL 9005 Jet black



RAL 4008 Signal violet



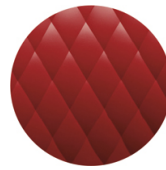
PANTONE 380 C
Boss green



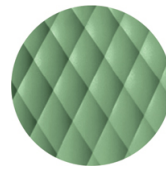
NCS S4005-Y50R
Turtle-dove



RAL 1004 Golden
yellow



PANTONE 18-1438
Marsala



RAL 6021 Pale green

FRAMES

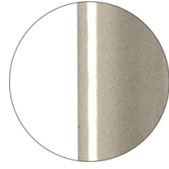
AC STEEL



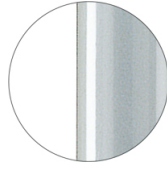
RAL 9016
VR Traffic white



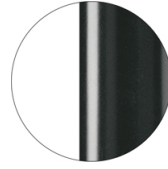
RAL 9010
VR Pure white



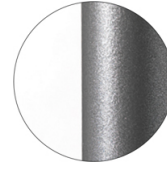
PANTONE 402 C
VR Turtle-dove



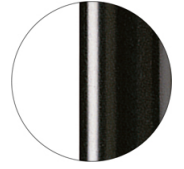
RAL 9006
VR White aluminium



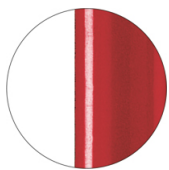
RAL 7016
VR Anthracite grey



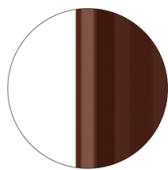
VR Pewter



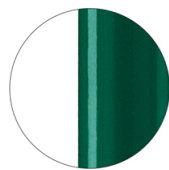
RAL 9005
VR Jet black



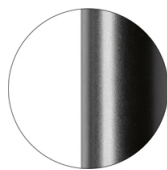
RAL 3003
VR Ruby red



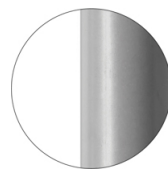
RAL 8017
VR Chocolate brown



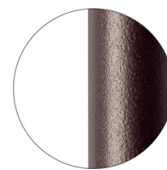
RAL 6005
VR Moss green



RAL 9005
VR Matt Jet Black



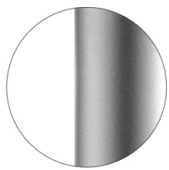
RAL 7037
VR Matt Dusty grey



VR Rough metallic
bronze



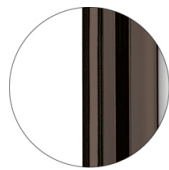
CR Chrome



CR S Satin chrome



CR X Brass chrome



CR X Burnished chrome

CERTIFICATIONS

- > UNI/EN 15373:2007 - Test 1. Carico statico sedile e schienale: 3 (23/01/13)
- > UNI/EN 15373:2007 - Test 10. Prova di fatica sedile e schienale: 3 (27/06/11)
- > UNI/EN 15373:2007 - Test 19. Prova d'urto sul sedile: 3 (27/06/11)

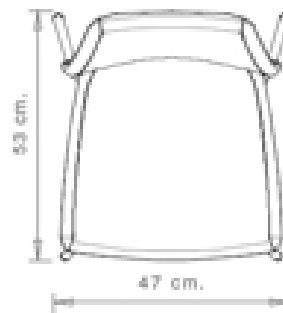
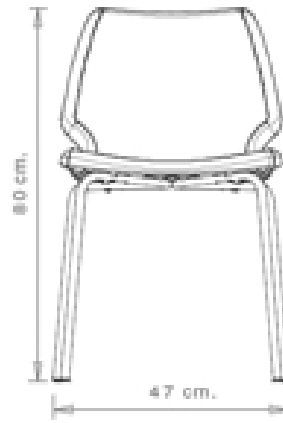
USES

coffee & restaurants, office and waiting areas, outdoor,

Uni 550M

UNI COLLECTION:

Uni 550, Uni 550M, Uni 378, Uni 378M, Uni 378B, Uni 378B-M, Uni 380, Uni 380M, Uni 380B, Uni 380B-M, Uni 562, Uni 562M, Uni 386, Uni 386M, Uni 602, Uni 602M, Uni 603, Uni 603M, Uni 551, Uni 551M, Uni 552, Uni 552M, Uni 552G, Uni 552M-G, Uni 552T, Uni 552G-T, Uni 558-DP, Uni 558M-DP, Uni 558-DR, Uni 558M-DR, Uni 553, Uni 553M, Uni 577, Uni 577M, Uni 544, Uni 565, Uni 391, Uni 391M, Uni 393, Uni 393M, Uni 220, Uni 221, Uni 222, Uni 223, Trolley 536,



Chair with steel frame, 4 legs. Upholstered polypropylene shell.

WEIGHT

6,75 kg

PACK

0,24 m³

PIECES PER BOX

1

FINISHES SEATING

TE FABRICS



Citadel Camira
+ 16 colours



Medley Gabriel
+ 14 colours



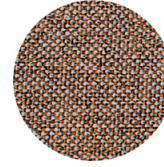
Inca Abitex
+ 15 colours



Crazy Flukso
+ 7 colours



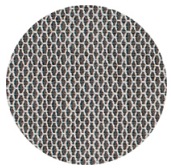
Xtreme Camira
+ 16 colours



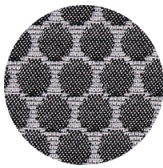
Rivet Camira
+ 12 colours



Valencia Spradling
+ 17 colours



Criss Cross Gabriel
+ 19 colours



Bubble Flukso
+ 9 colours



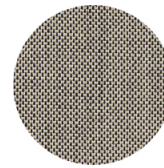
Europost 2 Gabriel
+ 16 colours



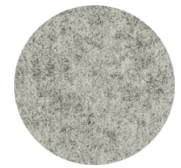
Fame Gabriel
+ 23 colours



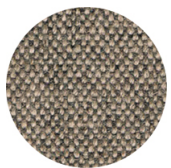
Parotega NF
Skai Hornschuh
+ 8 colours



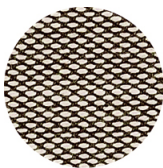
Balta Vescom
+ 12 colours



Blazer Camira
+ 25 colours



Main line flax Camira
+ 13 colours



Steelcut trio 3
Kvadrat
+ 20 colours

PP POLYPROPYLENE



RAL 9016 Traffic white



NCS S2060-B Azure



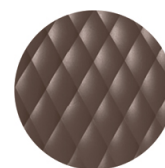
RAL 3000 Flame red



RAL 7016 Anthracite
grey



RAL 2003 Pastel
orange



NCS S7005-Y50R
Cocoa



RAL 9005 Jet black



RAL 4008 Signal violet



PANTONE 380 C
Boss green



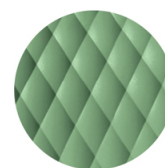
NCS S4005-Y50R
Turtle-dove



RAL 1004 Golden
yellow



PANTONE 18-1438
Marsala



RAL 6021 Pale green

FRAMES

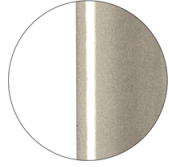
AC STEEL



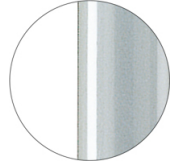
RAL 9016
VR Traffic white



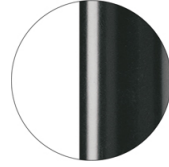
RAL 9010
VR Pure white



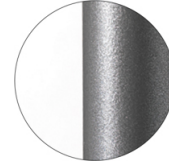
PANTONE 402 C
VR Turtle-dove



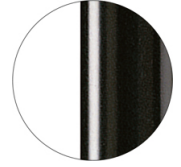
RAL 9006
VR White aluminium



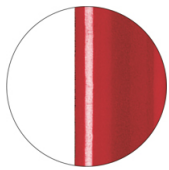
RAL 7016
VR Anthracite grey



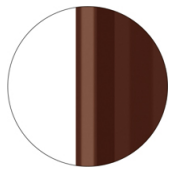
VR Pewter



RAL 9005
VR Jet black



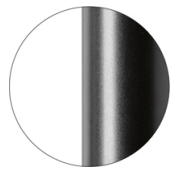
RAL 3003
VR Ruby red



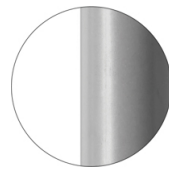
RAL 8017
VR Chocolate brown



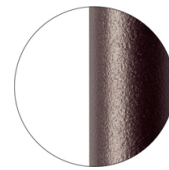
RAL 6005
VR Moss green



RAL 9005
VR Matt Jet Black



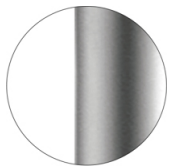
RAL 7037
VR Matt Dusty grey



VR Rough metallic
bronze



CR Chrome



CR S Satin chrome



CR X Brass chrome



CR X Burnished chrome

CERTIFICATIONS

> UNI/EN 16139:2013 - Par.6. Prova 8. Prova di fatica sedile e schienale: 2-Usò estremo (03/07/16)

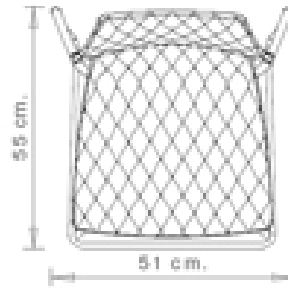
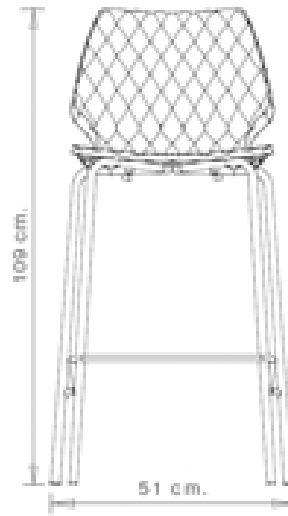
USES

coffee & restaurants, office and waiting areas, outdoor,

Uni 378

UNI COLLECTION:

Uni 550, Uni 550M, Uni 378, Uni 378M, Uni 378B, Uni 378B-M, Uni 380, Uni 380M, Uni 380B, Uni 380B-M, Uni 562, Uni 562M, Uni 386, Uni 386M, Uni 602, Uni 602M, Uni 603, Uni 603M, Uni 551, Uni 551M, Uni 552, Uni 552M, Uni 552G, Uni 552M-G, Uni 552T, Uni 552G-T, Uni 558-DP, Uni 558M-DP, Uni 558-DR, Uni 558M-DR, Uni 553, Uni 553M, Uni 577, Uni 577M, Uni 544, Uni 565, Uni 391, Uni 391M, Uni 393, Uni 393M, Uni 220, Uni 221, Uni 222, Uni 223, Trolley 536,



Barstool with steel frame, 4 legs. Polypropylene seat.

STACKABLE

4

WEIGHT

6,8 kg

PACK

0,46 m³

PIECES PER BOX

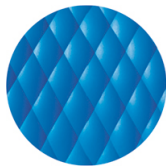
4

FINISHES SEATING

PP POLYPROPYLENE



RAL 9016 Traffic white



NCS S2060-B Azure



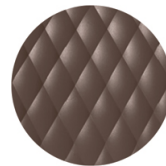
RAL 3000 Flame red



RAL 7016 Anthracite
grey



RAL 2003 Pastel
orange



NCS S7005-Y50R
Cocoa



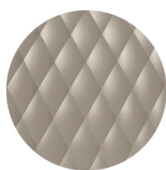
RAL 9005 Jet black



RAL 4008 Signal violet



PANTONE 380 C
Boss green



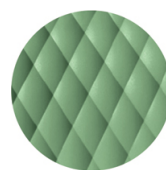
NCS S4005-Y50R
Turtle-dove



RAL 1004 Golden
yellow



PANTONE 18-1438
Marsala



RAL 6021 Pale green

FRAMES

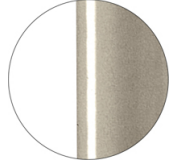
AC STEEL



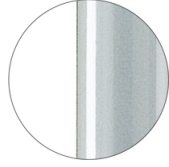
RAL 9016
VR Traffic white



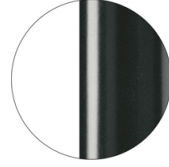
RAL 9010
VR Pure white



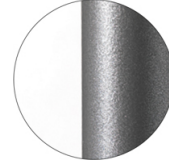
PANTONE 402 C
VR Turtle-dove



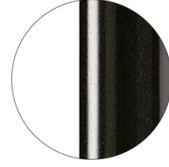
RAL 9006
VR White aluminium



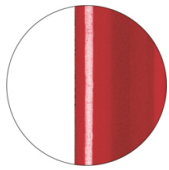
RAL 7016
VR Anthracite grey



VR Pewter



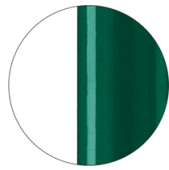
RAL 9005
VR Jet black



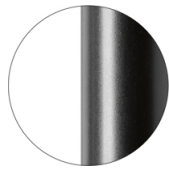
RAL 3003
VR Ruby red



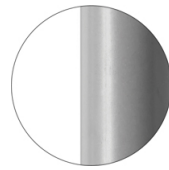
RAL 8017
VR Chocolate brown



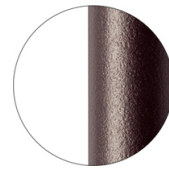
RAL 6005
VR Moss green



RAL 9005
VR Matt Jet Black



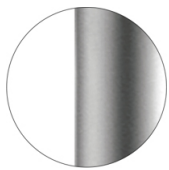
RAL 7037
VR Matt Dusty grey



VR Rough metallic
bronze



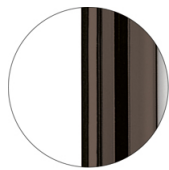
CR Chrome



CR S Satin chrome



CR X Brass chrome



CR X Burnished chrome

USES

coffee & restaurants, office and waiting areas, outdoor,

Uni 378M



UNI COLLECTION:

Uni 550, Uni 550M, Uni 378, Uni 378M, Uni 378B, Uni 378B-M, Uni 380, Uni 380M, Uni 380B, Uni 380B-M, Uni 562, Uni 562M, Uni 386, Uni 386M, Uni 602, Uni 602M, Uni 603, Uni 603M, Uni 551, Uni 551M, Uni 552, Uni 552M, Uni 552G, Uni 552M-G, Uni 552T, Uni 552G-T, Uni 558-DP, Uni 558M-DP, Uni 558-DR, Uni 558M-DR, Uni 553, Uni 553M, Uni 577, Uni 577M, Uni 544, Uni 565, Uni 391, Uni 391M, Uni 393, Uni 393M, Uni 220, Uni 221, Uni 222, Uni 223, Trolley 536,



Barstool with steel frame, 4 legs. Upholstered polypropylene seat.

WEIGHT

8,95Kg

PACK0,46 m³**PIECES PER BOX**

1

FINISHES SEATING

TE FABRICS



Citadel Camira
+ 16 colours



Medley Gabriel
+ 14 colours



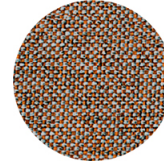
Inca Abitex
+ 15 colours



Crazy Flukso
+ 7 colours



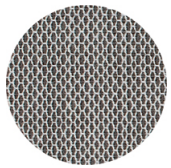
Xtreme Camira
+ 16 colours



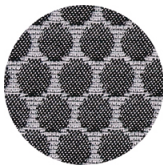
Rivet Camira
+ 12 colours



Valencia Spradling
+ 17 colours



Criss Cross Gabriel
+ 19 colours



Bubble Flukso
+ 9 colours



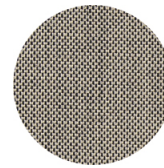
Europost 2 Gabriel
+ 16 colours



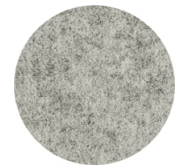
Fame Gabriel
+ 23 colours



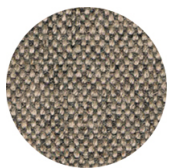
Parotega NF
Skai Hornschuch
+ 8 colours



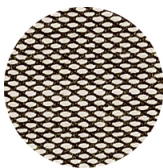
Balta Vescom
+ 12 colours



Blazer Camira
+ 25 colours



Main line flax Camira
+ 13 colours



Steelcut trio 3
Kvadrat
+ 20 colours

PP POLYPROPYLENE



RAL 9016 Traffic white



NCS S2060-B Azure



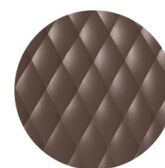
RAL 3000 Flame red



RAL 7016 Anthracite
grey



RAL 2003 Pastel
orange



NCS S7005-Y50R
Cocoa



RAL 9005 Jet black



RAL 4008 Signal violet



PANTONE 380 C
Boss green



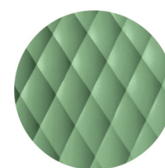
NCS S4005-Y50R
Turtle-dove



RAL 1004 Golden
yellow



PANTONE 18-1438
Marsala



RAL 6021 Pale green

FRAMES

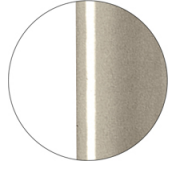
AC STEEL



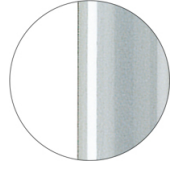
RAL 9016
VR Traffic white



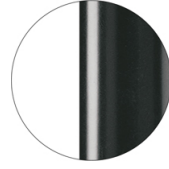
RAL 9010
VR Pure white



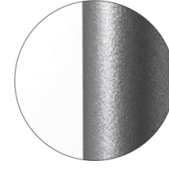
PANTONE 402 C
VR Turtle-dove



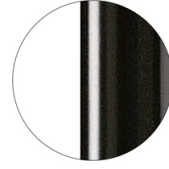
RAL 9006
VR White aluminium



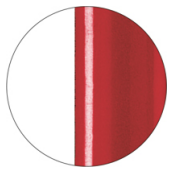
RAL 7016
VR Anthracite grey



VR Pewter



RAL 9005
VR Jet black



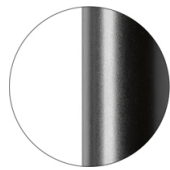
RAL 3003
VR Ruby red



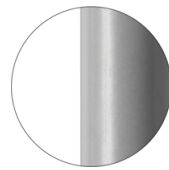
RAL 8017
VR Chocolate brown



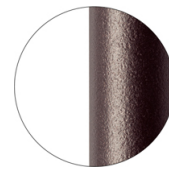
RAL 6005
VR Moss green



RAL 9005
VR Matt Jet Black



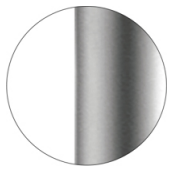
RAL 7037
VR Matt Dusty grey



VR Rough metallic
bronze



CR Chrome



CR S Satin chrome



CR X Brass chrome



CR X Burnished chrome

USES

coffee & restaurants, office and waiting areas, outdoor,

Uni 378B



UNI COLLECTION:

Uni 550, Uni 550M, Uni 378, Uni 378M, Uni 378B, Uni 378B-M, Uni 380, Uni 380M, Uni 380B, Uni 380B-M, Uni 562, Uni 562M, Uni 386, Uni 386M, Uni 602, Uni 602M, Uni 603, Uni 603M, Uni 551, Uni 551M, Uni 552, Uni 552M, Uni 552G, Uni 552M-G, Uni 552T, Uni 552G-T, Uni 558-DP, Uni 558M-DP, Uni 558-DR, Uni 558M-DR, Uni 553, Uni 553M, Uni 577, Uni 577M, Uni 544, Uni 565, Uni 391, Uni 391M, Uni 393, Uni 393M, Uni 220, Uni 221, Uni 222, Uni 223, Trolley 536,



Barstool with steel frame, 4 legs. Polypropylene seat. Version with seat-height H 65 cm.

STACKABLE

4

WEIGHT

6,5 Kg

PACK0,37 m³**PIECES PER BOX**

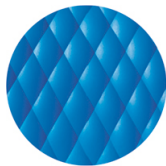
4

FINISHES SEATING

PP POLYPROPYLENE



RAL 9016 Traffic white



NCS S2060-B Azure



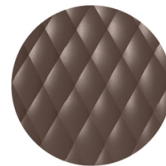
RAL 3000 Flame red



RAL 7016 Anthracite
grey



RAL 2003 Pastel
orange



NCS S7005-Y50R
Cocoa



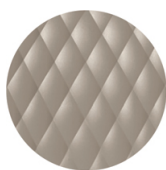
RAL 9005 Jet black



RAL 4008 Signal violet



PANTONE 380 C
Boss green



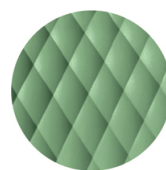
NCS S4005-Y50R
Turtle-dove



RAL 1004 Golden
yellow



PANTONE 18-1438
Marsala



RAL 6021 Pale green

FRAMES

AC STEEL



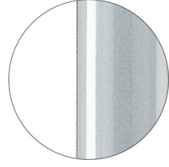
RAL 9016
VR Traffic white



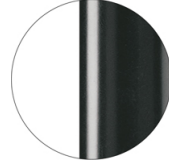
RAL 9010
VR Pure white



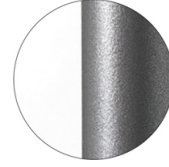
PANTONE 402 C
VR Turtle-dove



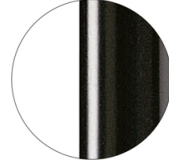
RAL 9006
VR White aluminium



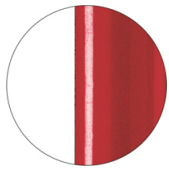
RAL 7016
VR Anthracite grey



VR Pewter



RAL 9005
VR Jet black



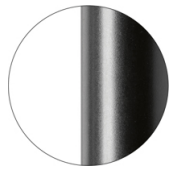
RAL 3003
VR Ruby red



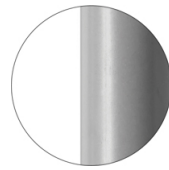
RAL 8017
VR Chocolate brown



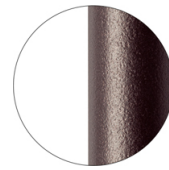
RAL 6005
VR Moss green



RAL 9005
VR Matt Jet Black



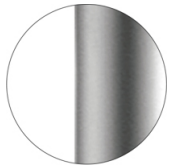
RAL 7037
VR Matt Dusty grey



VR Rough metallic
bronze



CR Chrome



CR S Satin chrome



CR X Brass chrome



CR X Burnished chrome

USES

coffee & restaurants, office and waiting areas, outdoor,

Uni 378B-M



UNI COLLECTION:

Uni 550, Uni 550M, Uni 378, Uni 378M, Uni 378B, Uni 378B-M, Uni 380, Uni 380M, Uni 380B, Uni 380B-M, Uni 562, Uni 562M, Uni 386, Uni 386M, Uni 602, Uni 602M, Uni 603, Uni 603M, Uni 551, Uni 551M, Uni 552, Uni 552M, Uni 552G, Uni 552M-G, Uni 552T, Uni 552G-T, Uni 558-DP, Uni 558M-DP, Uni 558-DR, Uni 558M-DR, Uni 553, Uni 553M, Uni 577, Uni 577M, Uni 544, Uni 565, Uni 391, Uni 391M, Uni 393, Uni 393M, Uni 220, Uni 221, Uni 222, Uni 223, Trolley 536,



Barstool with steel frame, 4 legs. Upholstered polypropylene seat.
Version with seat-height H 66 cm.

WEIGHT

8,6 kg

PACK0,37 m³**PIECES PER BOX**

1

FINISHES SEATING

TE FABRICS



Citadel Camira
+ 16 colours



Medley Gabriel
+ 14 colours



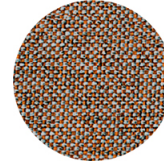
Inca Abitex
+ 15 colours



Crazy Flukso
+ 7 colours



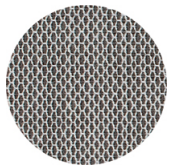
Xtreme Camira
+ 16 colours



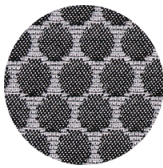
Rivet Camira
+ 12 colours



Valencia Spradling
+ 17 colours



Criss Cross Gabriel
+ 19 colours



Bubble Flukso
+ 9 colours



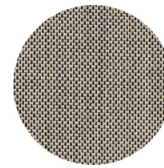
Europost 2 Gabriel
+ 16 colours



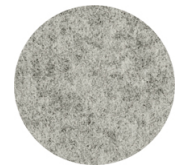
Fame Gabriel
+ 23 colours



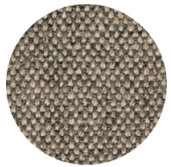
Parotega NF
Skai Hornschuch
+ 8 colours



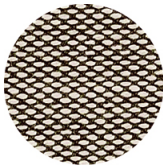
Balta Vescom
+ 12 colours



Blazer Camira
+ 25 colours



Main line flax Camira
+ 13 colours

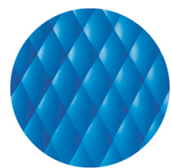


Steelcut trio 3
Kvadrat
+ 20 colours

PP POLYPROPYLENE



RAL 9016 Traffic
white



NCS S2060-B Azure



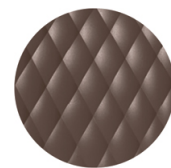
RAL 3000 Flame red



RAL 7016 Anthracite
grey



RAL 2003 Pastel
orange



NCS S7005-Y50R
Cocoa



RAL 9005 Jet black



PANTONE 380 C
Boss green



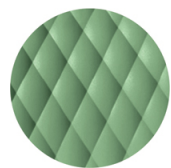
NCS S4005-Y50R
Turtle-dove



RAL 1004 Golden
yellow



PANTONE 18-1438
Marsala



RAL 6021 Pale green

FRAMES

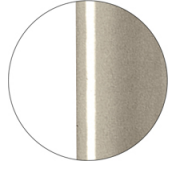
AC STEEL



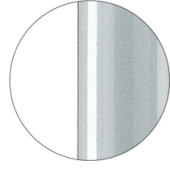
RAL 9016
VR Traffic white



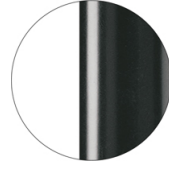
RAL 9010
VR Pure white



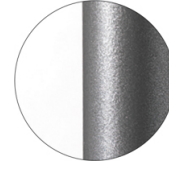
PANTONE 402 C
VR Turtle-dove



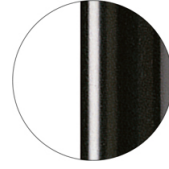
RAL 9006
VR White aluminium



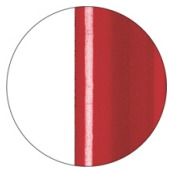
RAL 7016
VR Anthracite grey



VR Pewter



RAL 9005
VR Jet black



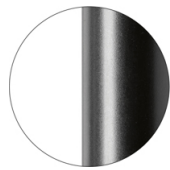
RAL 3003
VR Ruby red



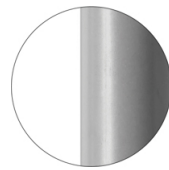
RAL 8017
VR Chocolate brown



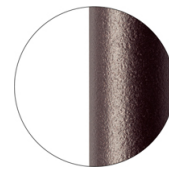
RAL 6005
VR Moss green



RAL 9005
VR Matt Jet Black



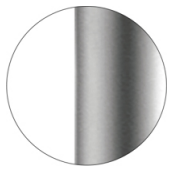
RAL 7037
VR Matt Dusty grey



VR Rough metallic
bronze



CR Chrome



CR S Satin chrome



CR X Brass chrome



CR X Burnished chrome

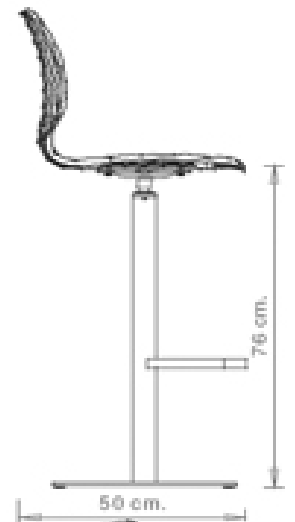
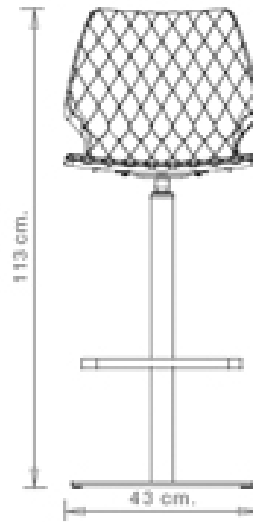
USES

coffee & restaurants, office and waiting areas, outdoor,

Uni 380

UNI COLLECTION:

Uni 550, Uni 550M, Uni 378, Uni 378M, Uni 378B, Uni 378B-M, Uni 380, Uni 380M, Uni 380B, Uni 380B-M, Uni 562, Uni 562M, Uni 386, Uni 386M, Uni 602, Uni 602M, Uni 603, Uni 603M, Uni 551, Uni 551M, Uni 552, Uni 552M, Uni 552G, Uni 552M-G, Uni 552T, Uni 552G-T, Uni 558-DP, Uni 558M-DP, Uni 558-DR, Uni 558M-DR, Uni 553, Uni 553M, Uni 577, Uni 577M, Uni 544, Uni 565, Uni 391, Uni 391M, Uni 393, Uni 393M, Uni 220, Uni 221, Uni 222, Uni 223, Trolley 536,



Swivel barstool with central steel base and kick-back device. Polypropylene seat.

WEIGHT

17 kg

PACK

0,29 m³

PIECES PER BOX

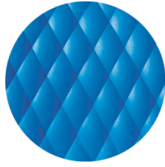
1

FINISHES SEATING

PP POLYPROPYLENE



RAL 9016 Traffic white



NCS S2060-B Azure



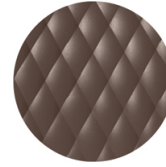
RAL 3000 Flame red



RAL 7016 Anthracite grey



RAL 2003 Pastel orange



NCS S7005-Y50R Cocoa



RAL 9005 Jet black



RAL 4008 Signal violet



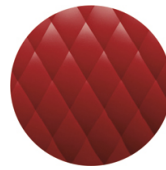
PANTONE 380 C Boss green



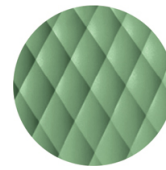
NCS S4005-Y50R Turtle-dove



RAL 1004 Golden yellow



PANTONE 18-1438 Marsala



RAL 6021 Pale green

FRAMES

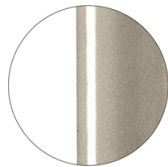
AC STEEL



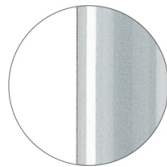
RAL 9016 VR Traffic white



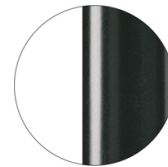
RAL 9010 VR Pure white



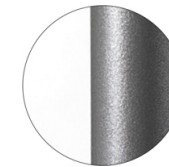
PANTONE 402 C VR Turtle-dove



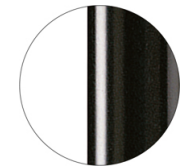
RAL 9006 VR White aluminium



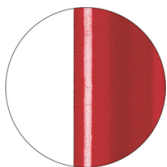
RAL 7016 VR Anthracite grey



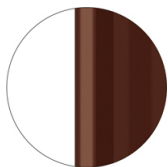
VR Pewter



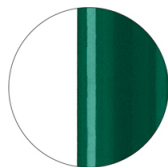
RAL 9005 VR Jet black



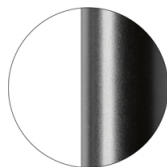
RAL 3003 VR Ruby red



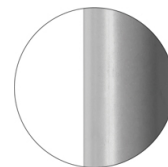
RAL 8017 VR Chocolate brown



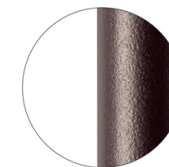
RAL 6005 VR Moss green



RAL 9005 VR Matt Jet Black



RAL 7037 VR Matt Dusty grey



VR Rough metallic bronze



CR Chrome

USES

coffee & restaurants, office and waiting areas, outdoor,

Uni 380M



UNI COLLECTION:

Uni 550, Uni 550M, Uni 378, Uni 378M, Uni 378B, Uni 378B-M, Uni 380, Uni 380M, Uni 380B, Uni 380B-M, Uni 562, Uni 562M, Uni 386, Uni 386M, Uni 602, Uni 602M, Uni 603, Uni 603M, Uni 551, Uni 551M, Uni 552, Uni 552M, Uni 552G, Uni 552M-G, Uni 552T, Uni 552G-T, Uni 558-DP, Uni 558M-DP, Uni 558-DR, Uni 558M-DR, Uni 553, Uni 553M, Uni 577, Uni 577M, Uni 544, Uni 565, Uni 391, Uni 391M, Uni 393, Uni 393M, Uni 220, Uni 221, Uni 222, Uni 223, Trolley 536,



Swivel barstool with central steel base and kick-back device. Upholstered polypropylene seat.

WEIGHT

19,2Kg

PACK0,29 m³**PIECES PER BOX**

1

FINISHES SEATING

TE FABRICS



Citadel Camira
+ 16 colours



Medley Gabriel
+ 14 colours



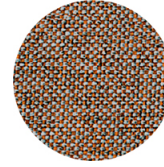
Inca Abitex
+ 15 colours



Crazy Flukso
+ 7 colours



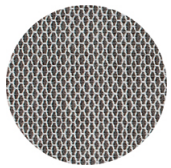
Xtreme Camira
+ 16 colours



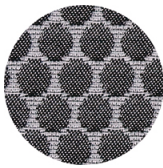
Rivet Camira
+ 12 colours



Valencia Spradling
+ 17 colours



Criss Cross Gabriel
+ 19 colours



Bubble Flukso
+ 9 colours



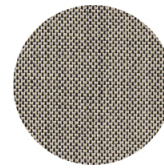
Europost 2 Gabriel
+ 16 colours



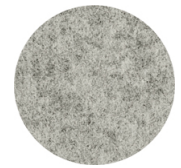
Fame Gabriel
+ 23 colours



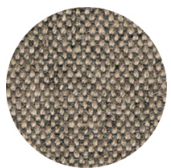
Parotega NF
Skai Hornschuh
+ 8 colours



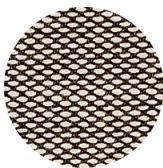
Balta Vescom
+ 12 colours



Blazer Camira
+ 25 colours



Main line flax Camira
+ 13 colours

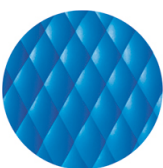


Steelcut trio 3
Kvadrat
+ 20 colours

PP POLYPROPYLENE



RAL 9016 Traffic white



NCS S2060-B Azure



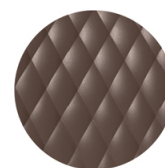
RAL 3000 Flame red



RAL 7016 Anthracite
grey



RAL 2003 Pastel
orange



NCS S7005-Y50R
Cocoa



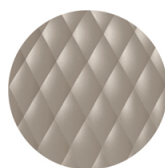
RAL 9005 Jet black



RAL 4008 Signal violet



PANTONE 380 C
Boss green



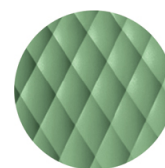
NCS S4005-Y50R
Turtle-dove



RAL 1004 Golden
yellow



PANTONE 18-1438
Marsala



RAL 6021 Pale green

FRAMES

AC STEEL



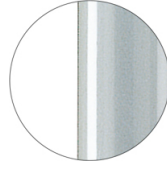
RAL 9016
VR Traffic white



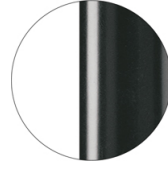
RAL 9010
VR Pure white



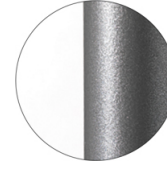
PANTONE 402 C
VR Turtle-dove



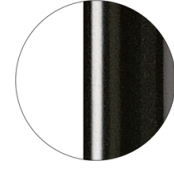
RAL 9006
VR White aluminium



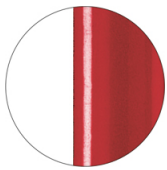
RAL 7016
VR Anthracite grey



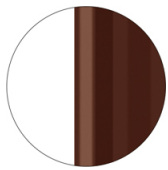
VR Pewter



RAL 9005
VR Jet black



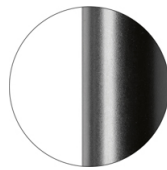
RAL 3003
VR Ruby red



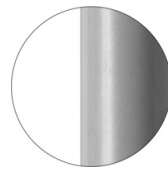
RAL 8017
VR Chocolate brown



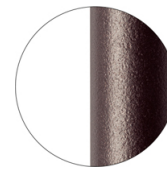
RAL 6005
VR Moss green



RAL 9005
VR Matt Jet Black



RAL 7037
VR Matt Dusty grey



VR Rough metallic
bronze



CR Chrome

USES

coffee & restaurants, office and waiting areas, outdoor,

Uni 380B



UNI COLLECTION:

Uni 550, Uni 550M, Uni 378, Uni 378M, Uni 378B, Uni 378B-M, Uni 380, Uni 380M, Uni 380B, Uni 380B-M, Uni 562, Uni 562M, Uni 386, Uni 386M, Uni 602, Uni 602M, Uni 603, Uni 603M, Uni 551, Uni 551M, Uni 552, Uni 552M, Uni 552G, Uni 552M-G, Uni 552T, Uni 552G-T, Uni 558-DP, Uni 558M-DP, Uni 558-DR, Uni 558M-DR, Uni 553, Uni 553M, Uni 577, Uni 577M, Uni 544, Uni 565, Uni 391, Uni 391M, Uni 393, Uni 393M, Uni 220, Uni 221, Uni 222, Uni 223, Trolley 536,



Swivel barstool with central steel base and kick-back device. Polypropylene seat. Version seatheight H 65 cm.

WEIGHT

16,7 Kg

PACK0,29 m³**PIECES PER BOX**

1

FINISHES SEATING

PP POLYPROPYLENE



RAL 9016 Traffic white



NCS S2060-B Azure



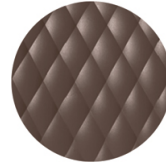
RAL 3000 Flame red



RAL 7016 Anthracite grey



RAL 2003 Pastel orange



NCS S7005-Y50R Cocoa



RAL 9005 Jet black



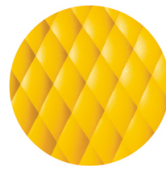
RAL 4008 Signal violet



PANTONE 380 C Boss green



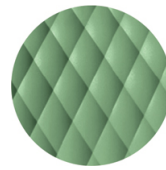
NCS S4005-Y50R Turtle-dove



RAL 1004 Golden yellow



PANTONE 18-1438 Marsala



RAL 6021 Pale green

FRAMES

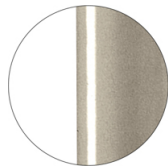
AC STEEL



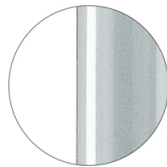
RAL 9016 VR Traffic white



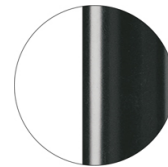
RAL 9010 VR Pure white



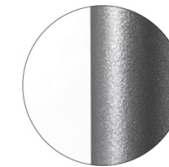
PANTONE 402 C VR Turtle-dove



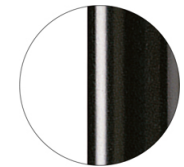
RAL 9006 VR White aluminium



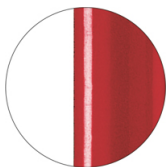
RAL 7016 VR Anthracite grey



VR Pewter



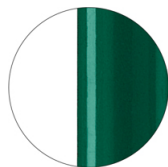
RAL 9005 VR Jet black



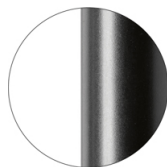
RAL 3003 VR Ruby red



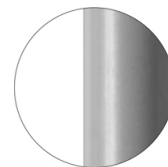
RAL 8017 VR Chocolate brown



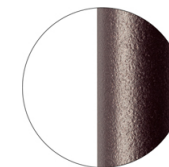
RAL 6005 VR Moss green



RAL 9005 VR Matt Jet Black



RAL 7037 VR Matt Dusty grey



VR Rough metallic bronze



CR Chrome

USES

coffee & restaurants, office and waiting areas, outdoor,

Uni 380B-M



UNI COLLECTION:

Uni 550, Uni 550M, Uni 378, Uni 378M, Uni 378B, Uni 378B-M, Uni 380, Uni 380M, Uni 380B, Uni 380B-M, Uni 562, Uni 562M, Uni 386, Uni 386M, Uni 602, Uni 602M, Uni 603, Uni 603M, Uni 551, Uni 551M, Uni 552, Uni 552M, Uni 552G, Uni 552M-G, Uni 552T, Uni 552G-T, Uni 558-DP, Uni 558M-DP, Uni 558-DR, Uni 558M-DR, Uni 553, Uni 553M, Uni 577, Uni 577M, Uni 544, Uni 565, Uni 391, Uni 391M, Uni 393, Uni 393M, Uni 220, Uni 221, Uni 222, Uni 223, Trolley 536,



Swivel barstool with central steel base and kick-back device. Upholstered polypropylene seat.
Version seatheight H 66 cm..

WEIGHT

18,85 kg

PACK0,27 m³**PIECES PER BOX**

1

FINISHES SEATING

TE FABRICS



Citadel Camira
+ 16 colours



Medley Gabriel
+ 14 colours



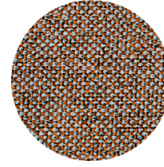
Inca Abitex
+ 15 colours



Crazy Flukso
+ 7 colours



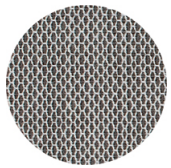
Xtreme Camira
+ 16 colours



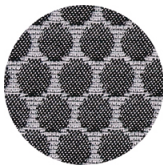
Rivet Camira
+ 12 colours



Valencia Spradling
+ 17 colours



Criss Cross Gabriel
+ 19 colours



Bubble Flukso
+ 9 colours



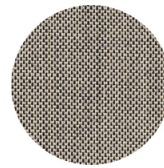
Europost 2 Gabriel
+ 16 colours



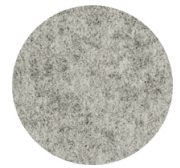
Fame Gabriel
+ 23 colours



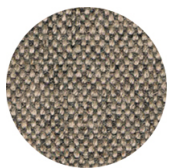
Parotega NF
Skai Hornschuh
+ 8 colours



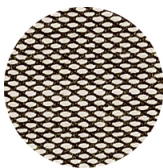
Balta Vescom
+ 12 colours



Blazer Camira
+ 25 colours



Main line flax Camira
+ 13 colours



Steelcut trio 3
Kvadrat
+ 20 colours

PP POLYPROPYLENE



RAL 9016 Traffic white



NCS S2060-B Azure



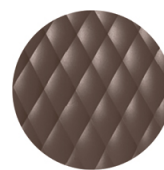
RAL 3000 Flame red



RAL 7016 Anthracite
grey



RAL 2003 Pastel
orange



NCS S7005-Y50R
Cocoa



RAL 9005 Jet black



RAL 4008 Signal violet



PANTONE 380 C
Boss green



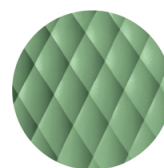
NCS S4005-Y50R
Turtle-dove



RAL 1004 Golden
yellow



PANTONE 18-1438
Marsala



RAL 6021 Pale green

FRAMES

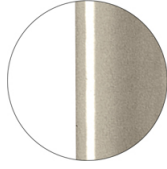
AC STEEL



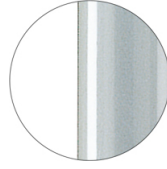
RAL 9016
VR Traffic white



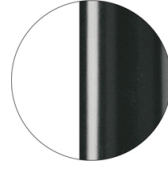
RAL 9010
VR Pure white



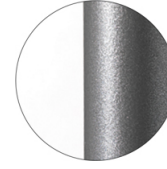
PANTONE 402 C
VR Turtle-dove



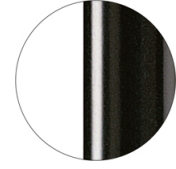
RAL 9006
VR White aluminium



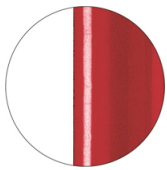
RAL 7016
VR Anthracite grey



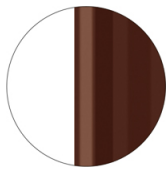
VR Pewter



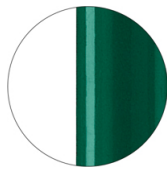
RAL 9005
VR Jet black



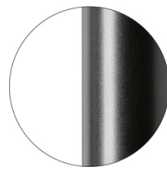
RAL 3003
VR Ruby red



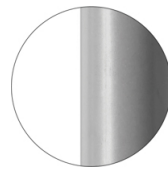
RAL 8017
VR Chocolate brown



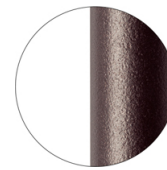
RAL 6005
VR Moss green



RAL 9005
VR Matt Jet Black



RAL 7037
VR Matt Dusty grey



VR Rough metallic
bronze



CR Chrome

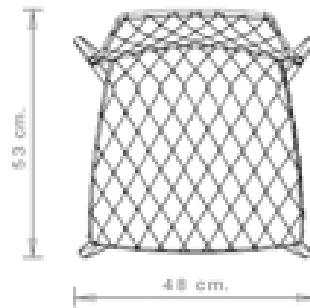
USES

coffee & restaurants, office and waiting areas, outdoor,

Uni 562

UNI COLLECTION:

Uni 550, Uni 550M, Uni 378, Uni 378M, Uni 378B, Uni 378B-M, Uni 380, Uni 380M, Uni 380B, Uni 380B-M, Uni 562, Uni 562M, Uni 386, Uni 386M, Uni 602, Uni 602M, Uni 603, Uni 603M, Uni 551, Uni 551M, Uni 552, Uni 552M, Uni 552G, Uni 552M-G, Uni 552T, Uni 552G-T, Uni 558-DP, Uni 558M-DP, Uni 558-DR, Uni 558M-DR, Uni 553, Uni 553M, Uni 577, Uni 577M, Uni 544, Uni 565, Uni 391, Uni 391M, Uni 393, Uni 393M, Uni 220, Uni 221, Uni 222, Uni 223, Trolley 536,



Chair with beech wood frame, 4 legs. Polypropylene shell.

WEIGHT

4,5 kg

PACK

0,29 m³

PIECES PER BOX

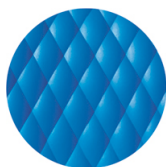
2

FINISHES SEATING

PP POLYPROPYLENE



RAL 9016 Traffic white



NCS S2060-B Azure



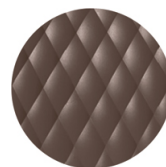
RAL 3000 Flame red



RAL 7016 Anthracite grey



RAL 2003 Pastel orange



NCS S7005-Y50R Cocoa



RAL 9005 Jet black



RAL 4008 Signal violet



PANTONE 380 C Boss green



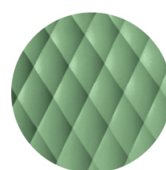
NCS S4005-Y50R Turtle-dove



RAL 1004 Golden yellow



PANTONE 18-1438 Marsala



RAL 6021 Pale green

FRAMES

LE WOOD



Maple stained beech wood



Natural beech wood



Wengé stained beech wood



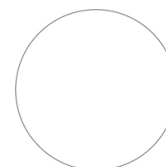
Black stained beech wood



"Canaletto" walnut stained beech wood



Oak stained beech wood



Stained according to sample

CERTIFICATIONS

- > UNI/EN 16139:2013 - Prova 12. Carico statico gambe anteriori: 2-Uso estremo (07/06/13)
- > UNI/EN 16139:2013 - Prova 13. Carico statico gambe laterali: 2-Uso estremo (07/06/13)
- > UNI/EN 16139:2013 - Prova 8. Prova di fatica sedile e schienale: 2-Uso estremo (13/09/16)

USES

coffee & restaurants, office and waiting areas, outdoor,

Uni 562M



UNI COLLECTION:

Uni 550, Uni 550M, Uni 378, Uni 378M, Uni 378B, Uni 378B-M, Uni 380, Uni 380M, Uni 380B, Uni 380B-M, Uni 562, Uni 562M, Uni 386, Uni 386M, Uni 602, Uni 602M, Uni 603, Uni 603M, Uni 551, Uni 551M, Uni 552, Uni 552M, Uni 552G, Uni 552M-G, Uni 552T, Uni 552G-T, Uni 558-DP, Uni 558M-DP, Uni 558-DR, Uni 558M-DR, Uni 553, Uni 553M, Uni 577, Uni 577M, Uni 544, Uni 565, Uni 391, Uni 391M, Uni 393, Uni 393M, Uni 220, Uni 221, Uni 222, Uni 223, Trolley 536,



Chair with beech wood frame, 4 legs. Upholstered polypropylene shell.

WEIGHT

6,7Kg

PACK0,24 m³**PIECES PER BOX**

1

FINISHES SEATING

TE FABRICS



Citadel Camira
+ 16 colours



Medley Gabriel
+ 14 colours



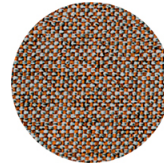
Inca Abitex
+ 15 colours



Crazy Flukso
+ 7 colours



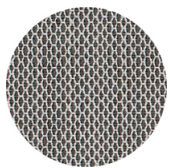
Xtreme Camira
+ 16 colours



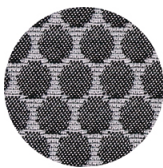
Rivet Camira
+ 12 colours



Valencia Spradling
+ 17 colours



Criss Cross Gabriel
+ 19 colours



Bubble Flukso
+ 9 colours



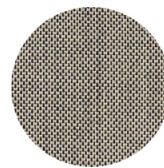
Europost 2 Gabriel
+ 16 colours



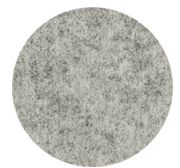
Fame Gabriel
+ 23 colours



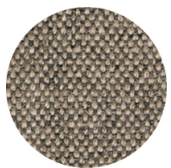
Parotega NF
Skai Hornschuh
+ 8 colours



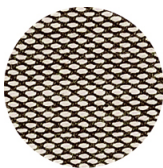
Balta Vescom
+ 12 colours



Blazer Camira
+ 25 colours



Main line flax Camira
+ 13 colours



Steelcut trio 3
Kvadrat
+ 20 colours

PP POLYPROPYLENE



RAL 9016 Traffic white



NCS S2060-B Azure



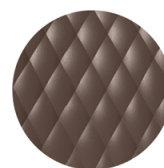
RAL 3000 Flame red



RAL 7016 Anthracite
grey



RAL 2003 Pastel
orange



NCS S7005-Y50R
Cocoa



RAL 9005 Jet black



RAL 4008 Signal violet



PANTONE 380 C
Boss green



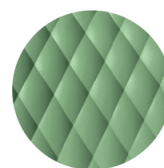
NCS S4005-Y50R
Turtle-dove



RAL 1004 Golden
yellow



PANTONE 18-1438
Marsala



RAL 6021 Pale green

FRAMES

LE WOOD



Maple stained beech wood



Natural beech wood



Wengé stained beech wood



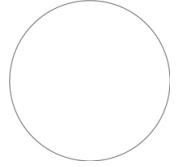
Black stained beech wood



"Canaletto" walnut stained beech wood



Oak stained beech wood



Stained according to sample

USES

coffee & restaurants, office and waiting areas, outdoor,

Uni 386

UNI COLLECTION:

Uni 550, Uni 550M, Uni 378, Uni 378M, Uni 378B, Uni 378B-M, Uni 380, Uni 380M, Uni 380B, Uni 380B-M, Uni 562, Uni 562M, Uni 386, Uni 386M, Uni 602, Uni 602M, Uni 603, Uni 603M, Uni 551, Uni 551M, Uni 552, Uni 552M, Uni 552G, Uni 552M-G, Uni 552T, Uni 552G-T, Uni 558-DP, Uni 558M-DP, Uni 558-DR, Uni 558M-DR, Uni 553, Uni 553M, Uni 577, Uni 577M, Uni 544, Uni 565, Uni 391, Uni 391M, Uni 393, Uni 393M, Uni 220, Uni 221, Uni 222, Uni 223, Trolley 536,



Barstool with beech wood frame, 4 legs. Polypropylene seat and back.

WEIGHT

6,3 kg

PACK

0,37 m³

PIECES PER BOX

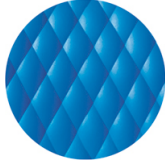
1

FINISHES SEATING

PP POLYPROPYLENE



RAL 9016 Traffic white



NCS S2060-B Azure



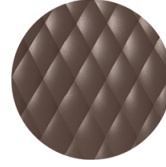
RAL 3000 Flame red



RAL 7016 Anthracite
grey



RAL 2003 Pastel
orange



NCS S7005-Y50R
Cocoa



RAL 9005 Jet black



RAL 4008 Signal violet



PANTONE 380 C
Boss green



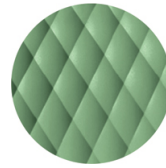
NCS S4005-Y50R
Turtle-dove



RAL 1004 Golden
yellow



PANTONE 18-1438
Marsala



RAL 6021 Pale green

FRAMES

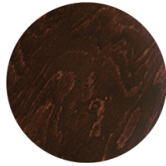
LE WOOD



Maple stained beech
wood



Natural beech wood



Wengé stained beech
wood



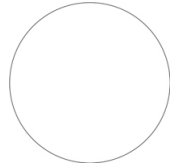
Black stained beech
wood



"Canaletto" walnut
stained beech wood



Oak stained beech
wood



Stained according to
sample

USES

coffee & restaurants, office and waiting areas, outdoor,

Uni 386M



UNI COLLECTION:

Uni 550, Uni 550M, Uni 378, Uni 378M, Uni 378B, Uni 378B-M, Uni 380, Uni 380M, Uni 380B, Uni 380B-M, Uni 562, Uni 562M, Uni 386, Uni 386M, Uni 602, Uni 602M, Uni 603, Uni 603M, Uni 551, Uni 551M, Uni 552, Uni 552M, Uni 552G, Uni 552M-G, Uni 552T, Uni 552G-T, Uni 558-DP, Uni 558M-DP, Uni 558-DR, Uni 558M-DR, Uni 553, Uni 553M, Uni 577, Uni 577M, Uni 544, Uni 565, Uni 391, Uni 391M, Uni 393, Uni 393M, Uni 220, Uni 221, Uni 222, Uni 223, Trolley 536,



Barstool with beech wood frame, 4 legs. Upholstered polypropylene seat and back.

WEIGHT

8,45Kg

PACK0,37 m³**PIECES PER BOX**

1

FINISHES SEATING

TE FABRICS



Citadel Camira
+ 16 colours



Medley Gabriel
+ 14 colours



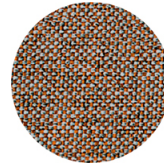
Inca Abitex
+ 15 colours



Crazy Flukso
+ 7 colours



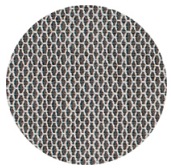
Xtreme Camira
+ 16 colours



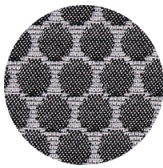
Rivet Camira
+ 12 colours



Valencia Spradling
+ 17 colours



Criss Cross Gabriel
+ 19 colours



Bubble Flukso
+ 9 colours



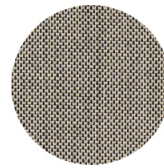
Europost 2 Gabriel
+ 16 colours



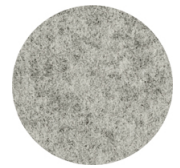
Fame Gabriel
+ 23 colours



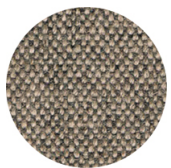
Parotega NF
Skai Hornschuh
+ 8 colours



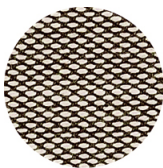
Balta Vescom
+ 12 colours



Blazer Camira
+ 25 colours



Main line flax Camira
+ 13 colours



Steelcut trio 3
Kvadrat
+ 20 colours

PP POLYPROPYLENE



RAL 9016 Traffic white



NCS S2060-B Azure



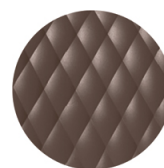
RAL 3000 Flame red



RAL 7016 Anthracite
grey



RAL 2003 Pastel
orange



NCS S7005-Y50R
Cocoa



RAL 9005 Jet black



RAL 4008 Signal violet



PANTONE 380 C
Boss green



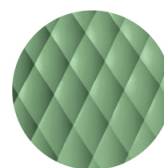
NCS S4005-Y50R
Turtle-dove



RAL 1004 Golden
yellow



PANTONE 18-1438
Marsala



RAL 6021 Pale green

FRAMES

LE WOOD



Maple stained beech wood



Natural beech wood



Wengé stained beech wood



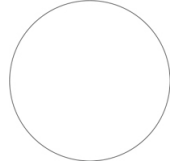
Black stained beech wood



"Canaletto" walnut stained beech wood



Oak stained beech wood



Stained according to sample

USES

coffee & restaurants, office and waiting areas, outdoor,

Uni 602



UNI COLLECTION:

Uni 550, Uni 550M, Uni 378, Uni 378M, Uni 378B, Uni 378B-M, Uni 380, Uni 380M, Uni 380B, Uni 380B-M, Uni 562, Uni 562M, Uni 386, Uni 386M, Uni 602, Uni 602M, Uni 603, Uni 603M, Uni 551, Uni 551M, Uni 552, Uni 552M, Uni 552G, Uni 552M-G, Uni 552T, Uni 552G-T, Uni 558-DP, Uni 558M-DP, Uni 558-DR, Uni 558M-DR, Uni 553, Uni 553M, Uni 577, Uni 577M, Uni 544, Uni 565, Uni 391, Uni 391M, Uni 393, Uni 393M, Uni 220, Uni 221, Uni 222, Uni 223, Trolley 536,



Chair with beech wood frame, 4 rounded legs. Polypropylene shell.

WEIGHT

4,5 Kg

PACK0,29 m³**PIECES PER BOX**

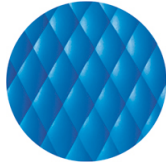
2

FINISHES SEATING

PP POLYPROPYLENE



RAL 9016 Traffic white



NCS S2060-B Azure



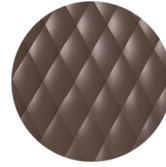
RAL 3000 Flame red



RAL 7016 Anthracite
grey



RAL 2003 Pastel
orange



NCS S7005-Y50R
Cocoa



RAL 9005 Jet black



RAL 4008 Signal violet



PANTONE 380 C
Boss green



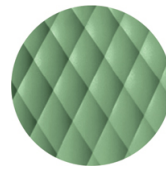
NCS S4005-Y50R
Turtle-dove



RAL 1004 Golden
yellow



PANTONE 18-1438
Marsala



RAL 6021 Pale green

FRAMES

LE WOOD



Maple stained beech
wood



Natural beech wood



Wengé stained beech
wood



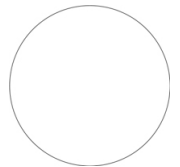
Black stained beech
wood



"Canaletto" walnut
stained beech wood



Oak stained beech
wood



Stained according to
sample

CERTIFICATIONS

> UNI/EN 16139:2013 - Par.6. Prova 8. Prova di fatica sedile e schienale: 2-Usò estremo (11/06/17)

USES

coffee & restaurants, office and waiting areas, outdoor,

Uni 602M



UNI COLLECTION:

Uni 550, Uni 550M, Uni 378, Uni 378M, Uni 378B, Uni 378B-M, Uni 380, Uni 380M, Uni 380B, Uni 380B-M, Uni 562, Uni 562M, Uni 386, Uni 386M, Uni 602, Uni 602M, Uni 603, Uni 603M, Uni 551, Uni 551M, Uni 552, Uni 552M, Uni 552G, Uni 552M-G, Uni 552T, Uni 552G-T, Uni 558-DP, Uni 558M-DP, Uni 558-DR, Uni 558M-DR, Uni 553, Uni 553M, Uni 577, Uni 577M, Uni 544, Uni 565, Uni 391, Uni 391M, Uni 393, Uni 393M, Uni 220, Uni 221, Uni 222, Uni 223, Trolley 536,



Chair with beech wood frame, 4 rounded legs. Upholstered polypropylene shell.

WEIGHT

6,65 Kg

PACK0,24 m³**PIECES PER BOX**

1

FINISHES SEATING

TE FABRICS



Citadel Camira
+ 16 colours



Medley Gabriel
+ 14 colours



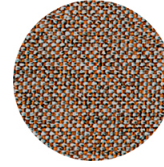
Inca Abitex
+ 15 colours



Crazy Flukso
+ 7 colours



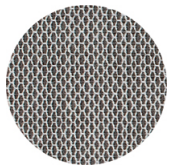
Xtreme Camira
+ 16 colours



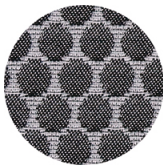
Rivet Camira
+ 12 colours



Valencia Spradling
+ 17 colours



Criss Cross Gabriel
+ 19 colours



Bubble Flukso
+ 9 colours



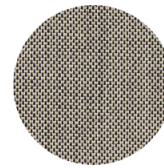
Europost 2 Gabriel
+ 16 colours



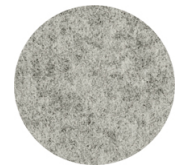
Fame Gabriel
+ 23 colours



Parotega NF
Skai Hornschuh
+ 8 colours



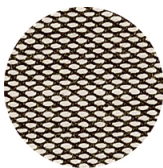
Balta Vescom
+ 12 colours



Blazer Camira
+ 25 colours



Main line flax Camira
+ 13 colours



Steelcut trio 3
Kvadrat
+ 20 colours

PP POLYPROPYLENE



RAL 9016 Traffic white



NCS S2060-B Azure



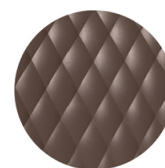
RAL 3000 Flame red



RAL 7016 Anthracite
grey



RAL 2003 Pastel
orange



NCS S7005-Y50R
Cocoa



RAL 9005 Jet black



RAL 4008 Signal violet



PANTONE 380 C
Boss green



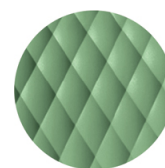
NCS S4005-Y50R
Turtle-dove



RAL 1004 Golden
yellow



PANTONE 18-1438
Marsala



RAL 6021 Pale green

FRAMES

LE WOOD



Maple stained beech wood



Natural beech wood



Wengé stained beech wood



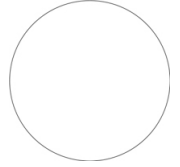
Black stained beech wood



"Canaletto" walnut stained beech wood



Oak stained beech wood



Stained according to sample

USES

coffee & restaurants, office and waiting areas, outdoor,

Uni 603



UNI COLLECTION:

Uni 550, Uni 550M, Uni 378, Uni 378M, Uni 378B, Uni 378B-M, Uni 380, Uni 380M, Uni 380B, Uni 380B-M, Uni 562, Uni 562M, Uni 386, Uni 386M, Uni 602, Uni 602M, Uni 603, Uni 603M, Uni 551, Uni 551M, Uni 552, Uni 552M, Uni 552G, Uni 552M-G, Uni 552T, Uni 552G-T, Uni 558-DP, Uni 558M-DP, Uni 558-DR, Uni 558M-DR, Uni 553, Uni 553M, Uni 577, Uni 577M, Uni 544, Uni 565, Uni 391, Uni 391M, Uni 393, Uni 393M, Uni 220, Uni 221, Uni 222, Uni 223, Trolley 536,



Swivel chair with central steel base and polypropylene shell.

WEIGHT

8,3 Kg

PACK0,24 m³**PIECES PER BOX**

1

FINISHES SEATING

PP POLYPROPYLENE



RAL 9016 Traffic white



NCS S2060-B Azure



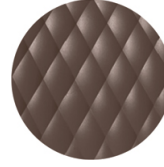
RAL 3000 Flame red



RAL 7016 Anthracite grey



RAL 2003 Pastel orange



NCS S7005-Y50R Cocoa



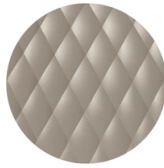
RAL 9005 Jet black



RAL 4008 Signal violet



PANTONE 380 C Boss green



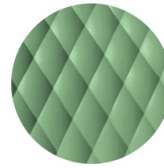
NCS S4005-Y50R Turtle-dove



RAL 1004 Golden yellow



PANTONE 18-1438 Marsala



RAL 6021 Pale green

FRAMES

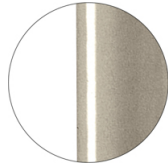
AC STEEL



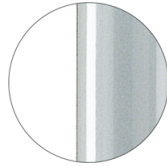
RAL 9016 VR Traffic white



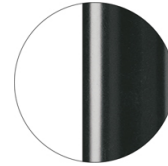
RAL 9010 VR Pure white



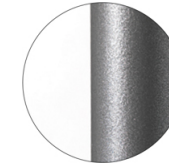
PANTONE 402 C VR Turtle-dove



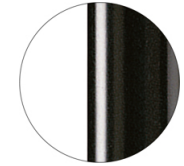
RAL 9006 VR White aluminium



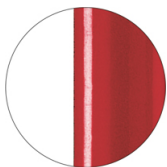
RAL 7016 VR Anthracite grey



VR Pewter



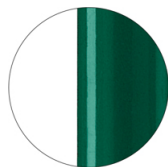
RAL 9005 VR Jet black



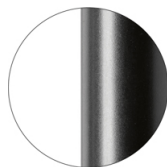
RAL 3003 VR Ruby red



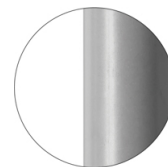
RAL 8017 VR Chocolate brown



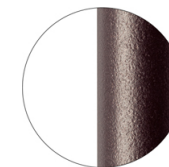
RAL 6005 VR Moss green



RAL 9005 VR Matt Jet Black



RAL 7037 VR Matt Dusty grey



VR Rough metallic bronze



CR Chrome

USES

coffee & restaurants, office and waiting areas, outdoor,

Uni 603M



UNI COLLECTION:

Uni 550, Uni 550M, Uni 378, Uni 378M, Uni 378B, Uni 378B-M, Uni 380, Uni 380M, Uni 380B, Uni 380B-M, Uni 562, Uni 562M, Uni 386, Uni 386M, Uni 602, Uni 602M, Uni 603, Uni 603M, Uni 551, Uni 551M, Uni 552, Uni 552M, Uni 552G, Uni 552M-G, Uni 552T, Uni 552G-T, Uni 558-DP, Uni 558M-DP, Uni 558-DR, Uni 558M-DR, Uni 553, Uni 553M, Uni 577, Uni 577M, Uni 544, Uni 565, Uni 391, Uni 391M, Uni 393, Uni 393M, Uni 220, Uni 221, Uni 222, Uni 223, Trolley 536,



Swivel chair with central steel base. Upholstered polypropylene shell.

WEIGHT

10,4 Kg

PACK0,24 m³**PIECES PER BOX**

1

FINISHES SEATING

TE FABRICS



Citadel Camira
+ 16 colours



Medley Gabriel
+ 14 colours



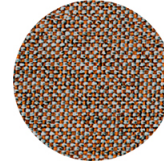
Inca Abitex
+ 15 colours



Crazy Flukso
+ 7 colours



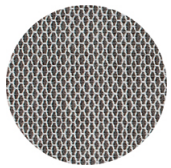
Xtreme Camira
+ 16 colours



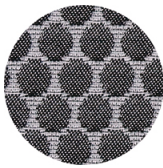
Rivet Camira
+ 12 colours



Valencia Spradling
+ 17 colours



Criss Cross Gabriel
+ 19 colours



Bubble Flukso
+ 9 colours



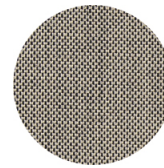
Europost 2 Gabriel
+ 16 colours



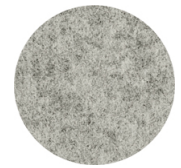
Fame Gabriel
+ 23 colours



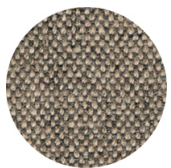
Parotega NF
Skai Hornschuh
+ 8 colours



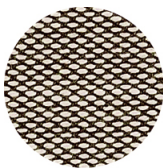
Balta Vescom
+ 12 colours



Blazer Camira
+ 25 colours



Main line flax Camira
+ 13 colours

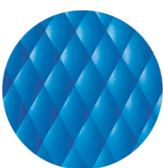


Steelcut trio 3
Kvadrat
+ 20 colours

PP POLYPROPYLENE



RAL 9016 Traffic white



NCS S2060-B Azure



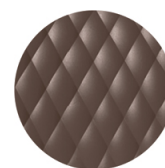
RAL 3000 Flame red



RAL 7016 Anthracite
grey



RAL 2003 Pastel
orange



NCS S7005-Y50R
Cocoa



RAL 9005 Jet black



RAL 4008 Signal violet



PANTONE 380 C
Boss green



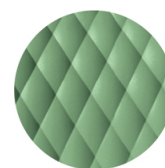
NCS S4005-Y50R
Turtle-dove



RAL 1004 Golden
yellow



PANTONE 18-1438
Marsala



RAL 6021 Pale green

FRAMES

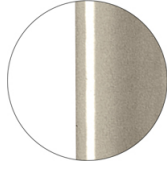
AC STEEL



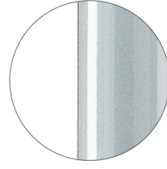
RAL 9016
VR Traffic white



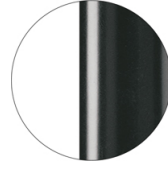
RAL 9010
VR Pure white



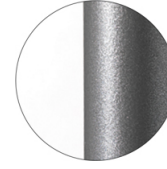
PANTONE 402 C
VR Turtle-dove



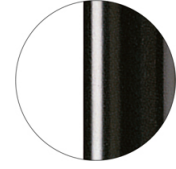
RAL 9006
VR White aluminium



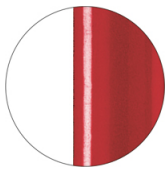
RAL 7016
VR Anthracite grey



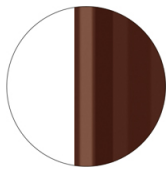
VR Pewter



RAL 9005
VR Jet black



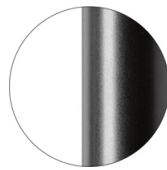
RAL 3003
VR Ruby red



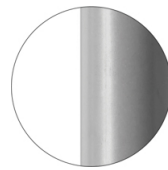
RAL 8017
VR Chocolate brown



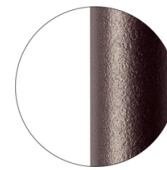
RAL 6005
VR Moss green



RAL 9005
VR Matt Jet Black



RAL 7037
VR Matt Dusty grey



VR Rough metallic
bronze



CR Chrome

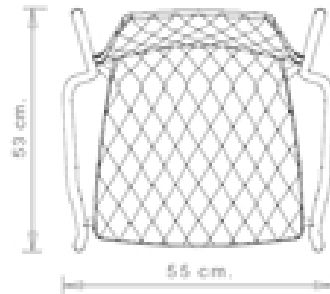
USES

coffee & restaurants, office and waiting areas, outdoor,

Uni 551

UNI COLLECTION:

Uni 550, Uni 550M, Uni 378, Uni 378M, Uni 378B, Uni 378B-M, Uni 380, Uni 380M, Uni 380B, Uni 380B-M, Uni 562, Uni 562M, Uni 386, Uni 386M, Uni 602, Uni 602M, Uni 603, Uni 603M, Uni 551, Uni 551M, Uni 552, Uni 552M, Uni 552G, Uni 552M-G, Uni 552T, Uni 552G-T, Uni 558-DP, Uni 558M-DP, Uni 558-DR, Uni 558M-DR, Uni 553, Uni 553M, Uni 577, Uni 577M, Uni 544, Uni 565, Uni 391, Uni 391M, Uni 393, Uni 393M, Uni 220, Uni 221, Uni 222, Uni 223, Trolley 536,



Chair with armrests and steel frame, 4 legs.
Polypropylene shell.

STACKABLE

4

WEIGHT

5,5 kg

PACK

0,39 m³

PIECES PER BOX

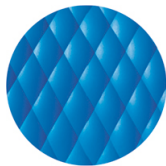
4

FINISHES SEATING

PP POLYPROPYLENE



RAL 9016 Traffic white



NCS S2060-B Azure



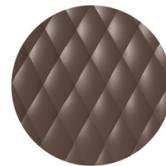
RAL 3000 Flame red



RAL 7016 Anthracite
grey



RAL 2003 Pastel
orange



NCS S7005-Y50R
Cocoa



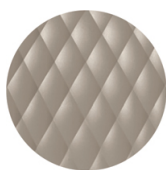
RAL 9005 Jet black



RAL 4008 Signal violet



PANTONE 380 C
Boss green



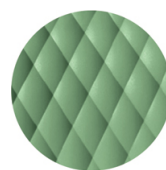
NCS S4005-Y50R
Turtle-dove



RAL 1004 Golden
yellow



PANTONE 18-1438
Marsala



RAL 6021 Pale green

FRAMES

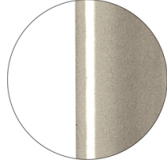
AC STEEL



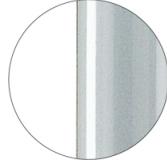
RAL 9016
VR Traffic white



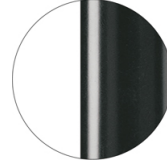
RAL 9010
VR Pure white



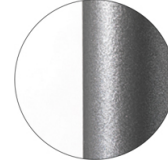
PANTONE 402 C
VR Turtle-dove



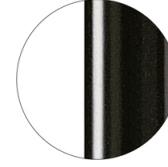
RAL 9006
VR White aluminium



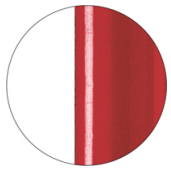
RAL 7016
VR Anthracite grey



VR Pewter



RAL 9005
VR Jet black



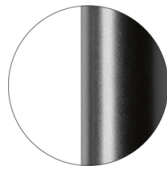
RAL 3003
VR Ruby red



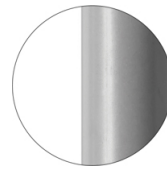
RAL 8017
VR Chocolate brown



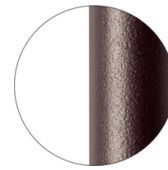
RAL 6005
VR Moss green



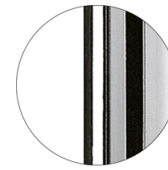
RAL 9005
VR Matt Jet Black



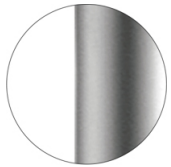
RAL 7037
VR Matt Dusty grey



VR Rough metallic
bronze



CR Chrome



CR S Satin chrome

USES

coffee & restaurants, office and waiting areas, outdoor,

Uni 551M



UNI COLLECTION:

Uni 550, Uni 550M, Uni 378, Uni 378M, Uni 378B, Uni 378B-M, Uni 380, Uni 380M, Uni 380B, Uni 380B-M, Uni 562, Uni 562M, Uni 386, Uni 386M, Uni 602, Uni 602M, Uni 603, Uni 603M, Uni 551, Uni 551M, Uni 552, Uni 552M, Uni 552G, Uni 552M-G, Uni 552T, Uni 552G-T, Uni 558-DP, Uni 558M-DP, Uni 558-DR, Uni 558M-DR, Uni 553, Uni 553M, Uni 577, Uni 577M, Uni 544, Uni 565, Uni 391, Uni 391M, Uni 393, Uni 393M, Uni 220, Uni 221, Uni 222, Uni 223, Trolley 536,



Chair with armrests and steel frame, 4 legs. Upholstered polypropylene shell.

WEIGHT

7,65 Kg

PACK0,39 m³**PIECES PER BOX**

1

FINISHES SEATING

TE FABRICS



Citadel Camira
+ 16 colours



Medley Gabriel
+ 14 colours



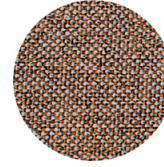
Inca Abitex
+ 15 colours



Crazy Flukso
+ 7 colours



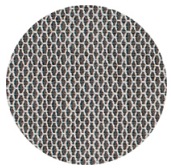
Xtreme Camira
+ 16 colours



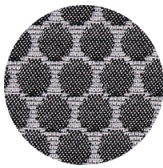
Rivet Camira
+ 12 colours



Valencia Spradling
+ 17 colours



Criss Cross Gabriel
+ 19 colours



Bubble Flukso
+ 9 colours



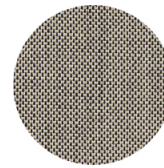
Europost 2 Gabriel
+ 16 colours



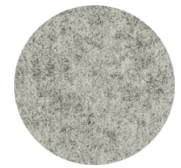
Fame Gabriel
+ 23 colours



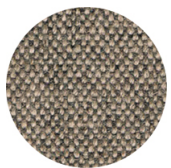
Parotega NF
Skai Hornschuh
+ 8 colours



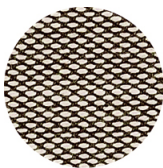
Balta Vescom
+ 12 colours



Blazer Camira
+ 25 colours



Main line flax Camira
+ 13 colours



Steelcut trio 3
Kvadrat
+ 20 colours

PP POLYPROPYLENE



RAL 9016 Traffic white



NCS S2060-B Azure



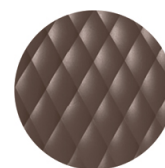
RAL 3000 Flame red



RAL 7016 Anthracite
grey



RAL 2003 Pastel
orange



NCS S7005-Y50R
Cocoa



RAL 9005 Jet black



RAL 4008 Signal violet



PANTONE 380 C
Boss green



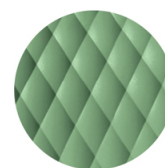
NCS S4005-Y50R
Turtle-dove



RAL 1004 Golden
yellow



PANTONE 18-1438
Marsala



RAL 6021 Pale green

FRAMES

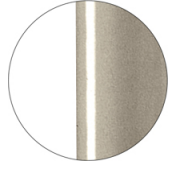
AC STEEL



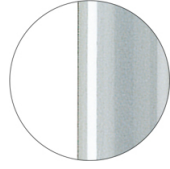
RAL 9016
VR Traffic white



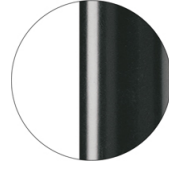
RAL 9010
VR Pure white



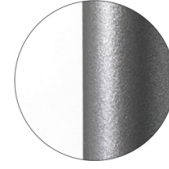
PANTONE 402 C
VR Turtle-dove



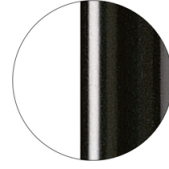
RAL 9006
VR White aluminium



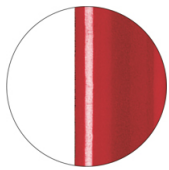
RAL 7016
VR Anthracite grey



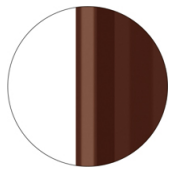
VR Pewter



RAL 9005
VR Jet black



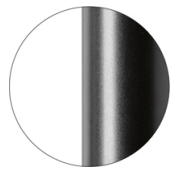
RAL 3003
VR Ruby red



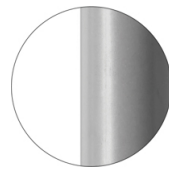
RAL 8017
VR Chocolate brown



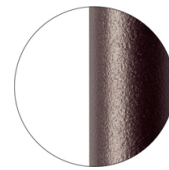
RAL 6005
VR Moss green



RAL 9005
VR Matt Jet Black



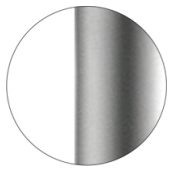
RAL 7037
VR Matt Dusty grey



VR Rough metallic
bronze



CR Chrome



CR S Satin chrome



CR X Brass chrome



CR X Burnished chrome

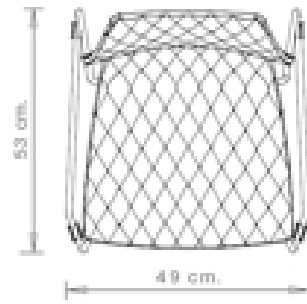
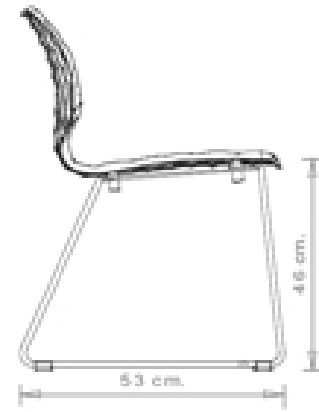
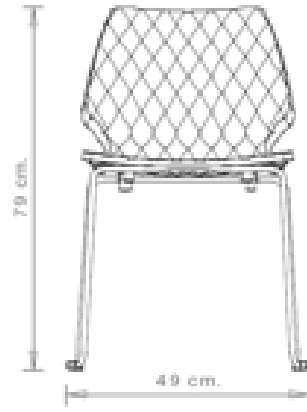
USES

coffee & restaurants, office and waiting areas, outdoor,

Uni 552

UNI COLLECTION:

Uni 550, Uni 550M, Uni 378, Uni 378M, Uni 378B, Uni 378B-M, Uni 380, Uni 380M, Uni 380B, Uni 380B-M, Uni 562, Uni 562M, Uni 386, Uni 386M, Uni 602, Uni 602M, Uni 603, Uni 603M, Uni 551, Uni 551M, Uni 552, Uni 552M, Uni 552G, Uni 552M-G, Uni 552T, Uni 552G-T, Uni 558-DP, Uni 558M-DP, Uni 558-DR, Uni 558M-DR, Uni 553, Uni 553M, Uni 577, Uni 577M, Uni 544, Uni 565, Uni 391, Uni 391M, Uni 393, Uni 393M, Uni 220, Uni 221, Uni 222, Uni 223, Trolley 536,



Chair with sled steel frame. Polypropylene shell.

STACKABLE

4

WEIGHT

6,3 kg

PACK

0,39 m³

PIECES PER BOX

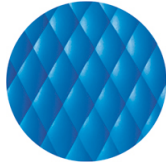
4

FINISHES SEATING

PP POLYPROPYLENE



RAL 9016 Traffic white



NCS S2060-B Azure



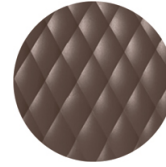
RAL 3000 Flame red



RAL 7016 Anthracite
grey



RAL 2003 Pastel
orange



NCS S7005-Y50R
Cocoa



RAL 9005 Jet black



RAL 4008 Signal violet



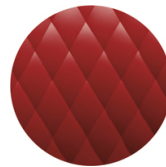
PANTONE 380 C
Boss green



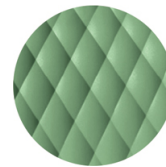
NCS S4005-Y50R
Turtle-dove



RAL 1004 Golden
yellow



PANTONE 18-1438
Marsala



RAL 6021 Pale green

FRAMES

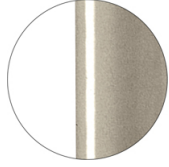
AC STEEL



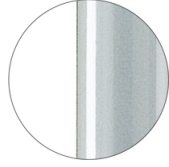
RAL 9016
VR Traffic white



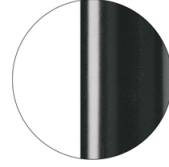
RAL 9010
VR Pure white



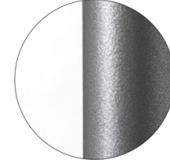
PANTONE 402 C
VR Turtle-dove



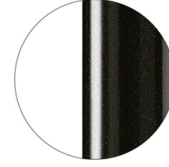
RAL 9006
VR White aluminium



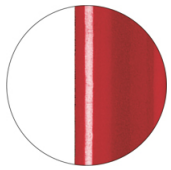
RAL 7016
VR Anthracite grey



VR Pewter



RAL 9005
VR Jet black



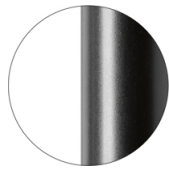
RAL 3003
VR Ruby red



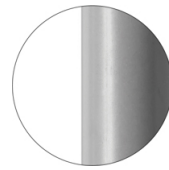
RAL 8017
VR Chocolate brown



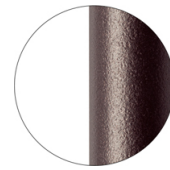
RAL 6005
VR Moss green



RAL 9005
VR Matt Jet Black



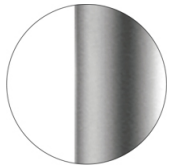
RAL 7037
VR Matt Dusty grey



VR Rough metallic
bronze



CR Chrome



CR S Satin chrome

USES

coffee & restaurants, office and waiting areas, outdoor,

Uni 552M



UNI COLLECTION:

Uni 550, Uni 550M, Uni 378, Uni 378M, Uni 378B, Uni 378B-M, Uni 380, Uni 380M, Uni 380B, Uni 380B-M, Uni 562, Uni 562M, Uni 386, Uni 386M, Uni 602, Uni 602M, Uni 603, Uni 603M, Uni 551, Uni 551M, Uni 552, Uni 552M, Uni 552G, Uni 552M-G, Uni 552T, Uni 552G-T, Uni 558-DP, Uni 558M-DP, Uni 558-DR, Uni 558M-DR, Uni 553, Uni 553M, Uni 577, Uni 577M, Uni 544, Uni 565, Uni 391, Uni 391M, Uni 393, Uni 393M, Uni 220, Uni 221, Uni 222, Uni 223, Trolley 536,



Chair with sled steel frame, upholstered polypropylene shell.

WEIGHT

8,4 Kg

PACK0,39 m³**PIECES PER BOX**

1

FINISHES SEATING

TE FABRICS



Citadel Camira
+ 16 colours



Medley Gabriel
+ 14 colours



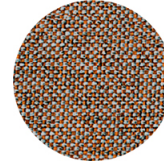
Inca Abitex
+ 15 colours



Crazy Flukso
+ 7 colours



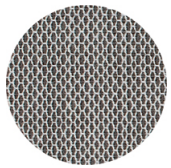
Xtreme Camira
+ 16 colours



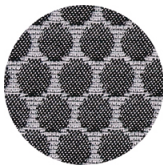
Rivet Camira
+ 12 colours



Valencia Spradling
+ 17 colours



Criss Cross Gabriel
+ 19 colours



Bubble Flukso
+ 9 colours



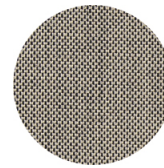
Europost 2 Gabriel
+ 16 colours



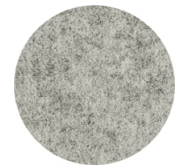
Fame Gabriel
+ 23 colours



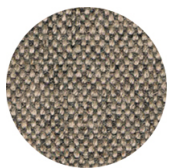
Parotega NF
Skai Hornschuh
+ 8 colours



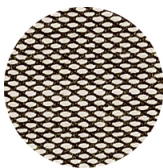
Balta Vescom
+ 12 colours



Blazer Camira
+ 25 colours



Main line flax Camira
+ 13 colours



Steelcut trio 3
Kvadrat
+ 20 colours

PP POLYPROPYLENE



RAL 9016 Traffic white



NCS S2060-B Azure



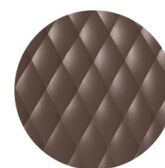
RAL 3000 Flame red



RAL 7016 Anthracite
grey



RAL 2003 Pastel
orange



NCS S7005-Y50R
Cocoa



RAL 9005 Jet black



RAL 4008 Signal violet



PANTONE 380 C
Boss green



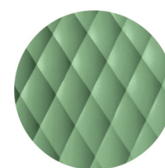
NCS S4005-Y50R
Turtle-dove



RAL 1004 Golden
yellow



PANTONE 18-1438
Marsala



RAL 6021 Pale green

FRAMES

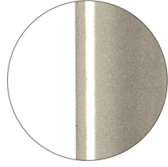
AC STEEL



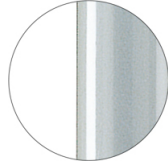
RAL 9016
VR Traffic white



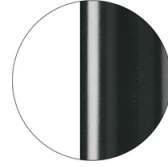
RAL 9010
VR Pure white



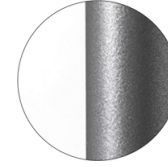
PANTONE 402 C
VR Turtle-dove



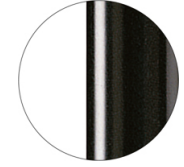
RAL 9006
VR White aluminium



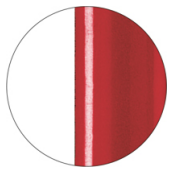
RAL 7016
VR Anthracite grey



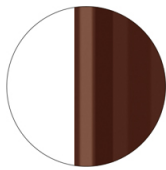
VR Pewter



RAL 9005
VR Jet black



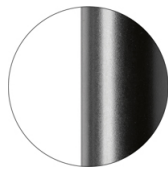
RAL 3003
VR Ruby red



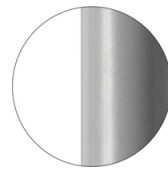
RAL 8017
VR Chocolate brown



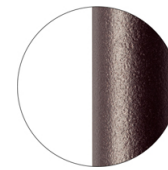
RAL 6005
VR Moss green



RAL 9005
VR Matt Jet Black



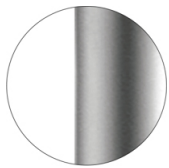
RAL 7037
VR Matt Dusty grey



VR Rough metallic
bronze



CR Chrome



CR S Satin chrome

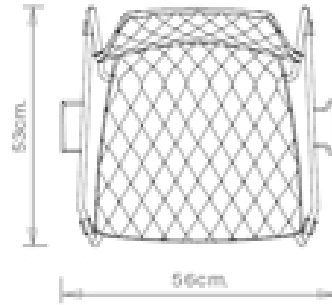
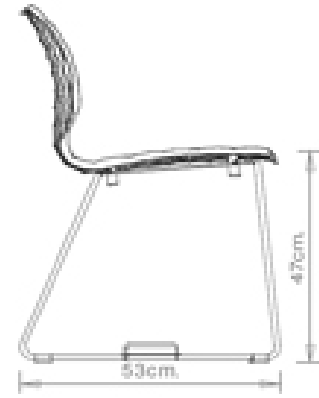
USES

coffee & restaurants, office and waiting areas, outdoor,

Uni 552G

UNI COLLECTION:

Uni 550, Uni 550M, Uni 378, Uni 378M, Uni 378B, Uni 378B-M, Uni 380, Uni 380M, Uni 380B, Uni 380B-M, Uni 562, Uni 562M, Uni 386, Uni 386M, Uni 602, Uni 602M, Uni 603, Uni 603M, Uni 551, Uni 551M, Uni 552, Uni 552M, Uni 552G, Uni 552M-G, Uni 552T, Uni 552G-T, Uni 558-DP, Uni 558M-DP, Uni 558-DR, Uni 558M-DR, Uni 553, Uni 553M, Uni 577, Uni 577M, Uni 544, Uni 565, Uni 391, Uni 391M, Uni 393, Uni 393M, Uni 220, Uni 221, Uni 222, Uni 223, Trolley 536,



Chair with sled steel frame and linking device. Polypropylene shell.

STACKABLE

4

WEIGHT

6,4 kg

PACK

0,39 m³

PIECES PER BOX

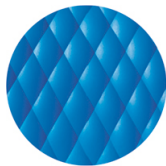
4

FINISHES SEATING

PP POLYPROPYLENE



RAL 9016 Traffic white



NCS S2060-B Azure



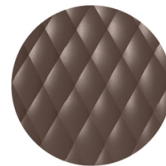
RAL 3000 Flame red



RAL 7016 Anthracite
grey



RAL 2003 Pastel
orange



NCS S7005-Y50R
Cocoa



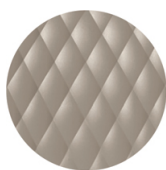
RAL 9005 Jet black



RAL 4008 Signal violet



PANTONE 380 C
Boss green



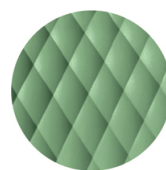
NCS S4005-Y50R
Turtle-dove



RAL 1004 Golden
yellow



PANTONE 18-1438
Marsala



RAL 6021 Pale green

FRAMES

AC STEEL



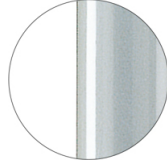
RAL 9016
VR Traffic white



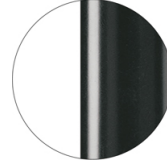
RAL 9010
VR Pure white



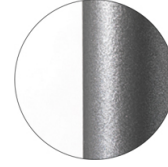
PANTONE 402 C
VR Turtle-dove



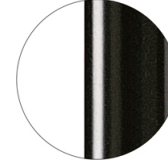
RAL 9006
VR White aluminium



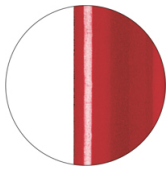
RAL 7016
VR Anthracite grey



VR Pewter



RAL 9005
VR Jet black



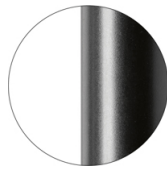
RAL 3003
VR Ruby red



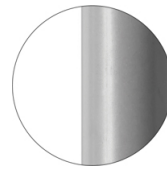
RAL 8017
VR Chocolate brown



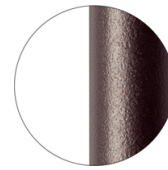
RAL 6005
VR Moss green



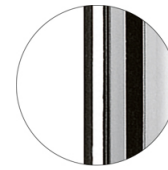
RAL 9005
VR Matt Jet Black



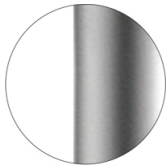
RAL 7037
VR Matt Dusty grey



VR Rough metallic
bronze



CR Chrome



CR S Satin chrome



LINKING DEVICE

USES

coffee & restaurants, office and waiting areas, outdoor,

Uni 552M-G



UNI COLLECTION:

Uni 550, Uni 550M, Uni 378, Uni 378M, Uni 378B, Uni 378B-M, Uni 380, Uni 380M, Uni 380B, Uni 380B-M, Uni 562, Uni 562M, Uni 386, Uni 386M, Uni 602, Uni 602M, Uni 603, Uni 603M, Uni 551, Uni 551M, Uni 552, Uni 552M, Uni 552G, Uni 552M-G, Uni 552T, Uni 552G-T, Uni 558-DP, Uni 558M-DP, Uni 558-DR, Uni 558M-DR, Uni 553, Uni 553M, Uni 577, Uni 577M, Uni 544, Uni 565, Uni 391, Uni 391M, Uni 393, Uni 393M, Uni 220, Uni 221, Uni 222, Uni 223, Trolley 536,



Chair with sled steel frame and linking device. Upholstered polypropylene shell.

WEIGHT

8,5Kg

PACK0,39 m³**PIECES PER BOX**

1

FINISHES SEATING

TE FABRICS



Citadel Camira
+ 16 colours



Medley Gabriel
+ 14 colours



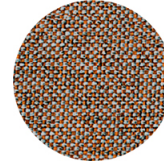
Inca Abitex
+ 15 colours



Crazy Flukso
+ 7 colours



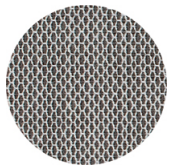
Xtreme Camira
+ 16 colours



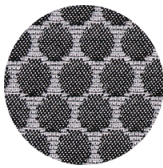
Rivet Camira
+ 12 colours



Valencia Spradling
+ 17 colours



Criss Cross Gabriel
+ 19 colours



Bubble Flukso
+ 9 colours



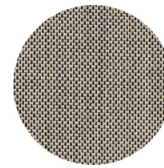
Europost 2 Gabriel
+ 16 colours



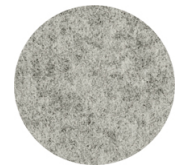
Fame Gabriel
+ 23 colours



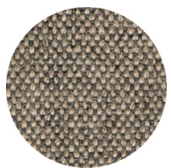
Parotega NF
Skai Hornschuh
+ 8 colours



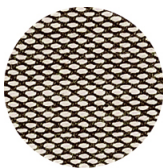
Balta Vescom
+ 12 colours



Blazer Camira
+ 25 colours



Main line flax Camira
+ 13 colours

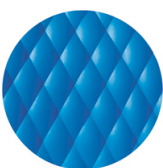


Steelcut trio 3
Kvadrat
+ 20 colours

PP POLYPROPYLENE



RAL 9016 Traffic white



NCS S2060-B Azure



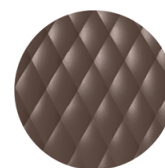
RAL 3000 Flame red



RAL 7016 Anthracite
grey



RAL 2003 Pastel
orange



NCS S7005-Y50R
Cocoa



RAL 9005 Jet black



RAL 4008 Signal violet



PANTONE 380 C
Boss green



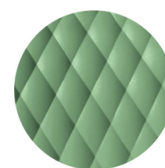
NCS S4005-Y50R
Turtle-dove



RAL 1004 Golden
yellow



PANTONE 18-1438
Marsala



RAL 6021 Pale green

FRAMES

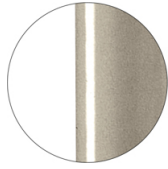
AC STEEL



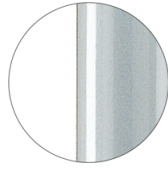
RAL 9016
VR Traffic white



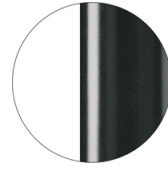
RAL 9010
VR Pure white



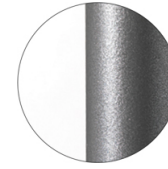
PANTONE 402 C
VR Turtle-dove



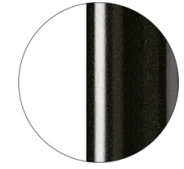
RAL 9006
VR White aluminium



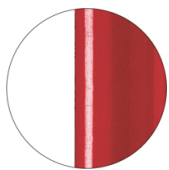
RAL 7016
VR Anthracite grey



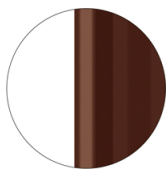
VR Pewter



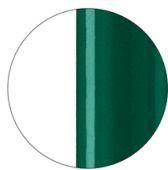
RAL 9005
VR Jet black



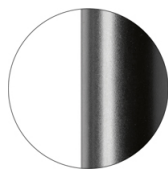
RAL 3003
VR Ruby red



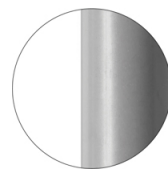
RAL 8017
VR Chocolate brown



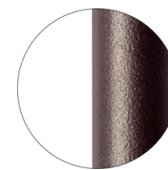
RAL 6005
VR Moss green



RAL 9005
VR Matt Jet Black



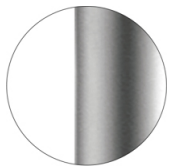
RAL 7037
VR Matt Dusty grey



VR Rough metallic
bronze



CR Chrome



CR S Satin chrome



LINKING DEVICE

USES

coffee & restaurants, office and waiting areas, outdoor,

Uni 552T



UNI COLLECTION:

Uni 550, Uni 550M, Uni 378, Uni 378M, Uni 378B, Uni 378B-M, Uni 380, Uni 380M, Uni 380B, Uni 380B-M, Uni 562, Uni 562M, Uni 386, Uni 386M, Uni 602, Uni 602M, Uni 603, Uni 603M, Uni 551, Uni 551M, Uni 552, Uni 552M, Uni 552G, Uni 552M-G, Uni 552T, Uni 552G-T, Uni 558-DP, Uni 558M-DP, Uni 558-DR, Uni 558M-DR, Uni 553, Uni 553M, Uni 577, Uni 577M, Uni 544, Uni 565, Uni 391, Uni 391M, Uni 393, Uni 393M, Uni 220, Uni 221, Uni 222, Uni 223, Trolley 536,



Chair with steel sled frame with conference desk kit. Polypropylene shell.

STACKABLE

4

WEIGHT

7,8 Kg

PACK0,39 m³**PIECES PER BOX**

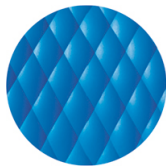
4

FINISHES SEATING

PP POLYPROPYLENE



RAL 9016 Traffic white



NCS S2060-B Azure



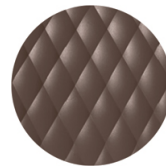
RAL 3000 Flame red



RAL 7016 Anthracite
grey



RAL 2003 Pastel
orange



NCS S7005-Y50R
Cocoa



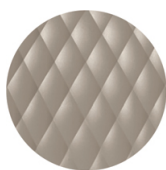
RAL 9005 Jet black



RAL 4008 Signal violet



PANTONE 380 C
Boss green



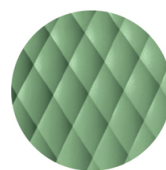
NCS S4005-Y50R
Turtle-dove



RAL 1004 Golden
yellow



PANTONE 18-1438
Marsala



RAL 6021 Pale green

FRAMES

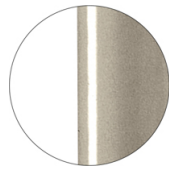
AC STEEL



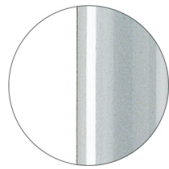
RAL 9016
VR Traffic white



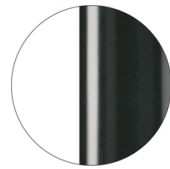
RAL 9010
VR Pure white



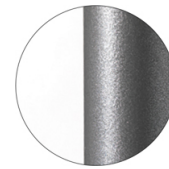
PANTONE 402 C
VR Turtle-dove



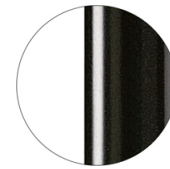
RAL 9006
VR White aluminium



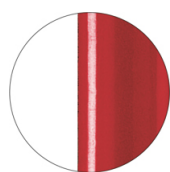
RAL 7016
VR Anthracite grey



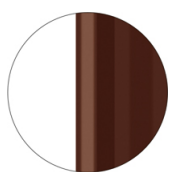
VR Pewter



RAL 9005
VR Jet black



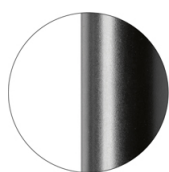
RAL 3003
VR Ruby red



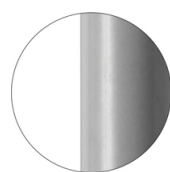
RAL 8017
VR Chocolate brown



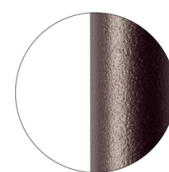
RAL 6005
VR Moss green



RAL 9005
VR Matt Jet Black



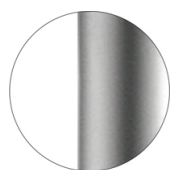
RAL 7037
VR Matt Dusty grey



VR Rough metallic
bronze



CR Chrome



CR S Satin chrome

CERTIFICATIONS

- > UNI/EN 16139:2013 - Par.4 Sicurezza. 4.3 Stabilità (15/02/17)
- > UNI/EN 16139:2013 - Par.6. Prova 18. Prova di carico statico sulle superfici di scrittura ausiliarie: 2-Uso estremo (15/02/17)
- > UNI/EN 16139:2013 - Par.6. Prova 19. Prova di fatica delle superfici di scrittura ausiliarie: 2-Uso estremo (17702/17)

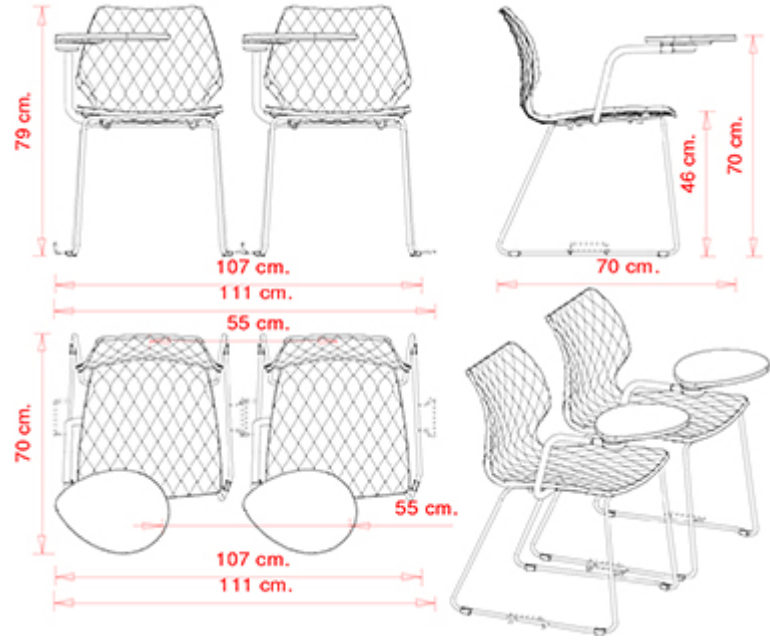
USES

coffee & restaurants, office and waiting areas, outdoor,

Uni 552G-T

UNI COLLECTION:

Uni 550, Uni 550M, Uni 378, Uni 378M, Uni 378B, Uni 378B-M, Uni 380, Uni 380M, Uni 380B, Uni 380B-M, Uni 562, Uni 562M, Uni 386, Uni 386M, Uni 602, Uni 602M, Uni 603, Uni 603M, Uni 551, Uni 551M, Uni 552, Uni 552M, Uni 552G, Uni 552M-G, Uni 552T, Uni 552G-T, Uni 558-DP, Uni 558M-DP, Uni 558-DR, Uni 558M-DR, Uni 553, Uni 553M, Uni 577, Uni 577M, Uni 544, Uni 565, Uni 391, Uni 391M, Uni 393, Uni 393M, Uni 220, Uni 221, Uni 222, Uni 223, Trolley 536,



Chair with steel sled frame and linking device with conference desk kit. Polypropylene shell.

STACKABLE

4

WEIGHT

7,9 kg

PACK

0,39 m³

PIECES PER BOX

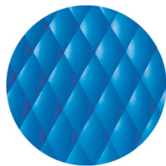
4

FINISHES SEATING

PP POLYPROPYLENE



RAL 9016 Traffic white



NCS S2060-B Azure



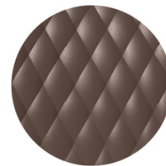
RAL 3000 Flame red



RAL 7016 Anthracite
grey



RAL 2003 Pastel
orange



NCS S7005-Y50R
Cocoa



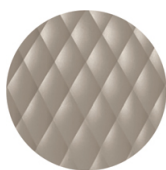
RAL 9005 Jet black



RAL 4008 Signal violet



PANTONE 380 C
Boss green



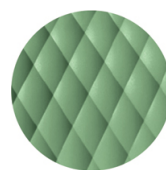
NCS S4005-Y50R
Turtle-dove



RAL 1004 Golden
yellow



PANTONE 18-1438
Marsala



RAL 6021 Pale green

FRAMES

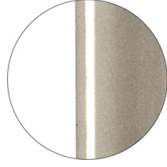
AC STEEL



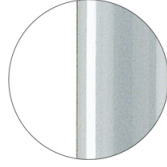
RAL 9016
VR Traffic white



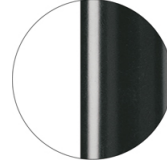
RAL 9010
VR Pure white



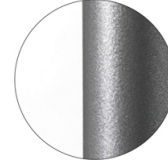
PANTONE 402 C
VR Turtle-dove



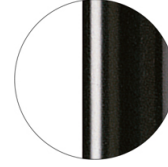
RAL 9006
VR White aluminium



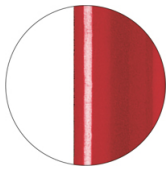
RAL 7016
VR Anthracite grey



VR Pewter



RAL 9005
VR Jet black



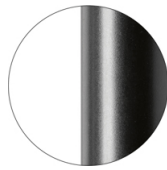
RAL 3003
VR Ruby red



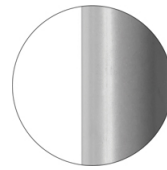
RAL 8017
VR Chocolate brown



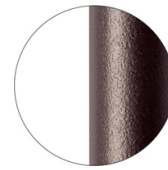
RAL 6005
VR Moss green



RAL 9005
VR Matt Jet Black



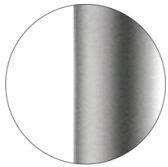
RAL 7037
VR Matt Dusty grey



VR Rough metallic
bronze



CR Chrome



CR S Satin chrome



LINKING DEVICE

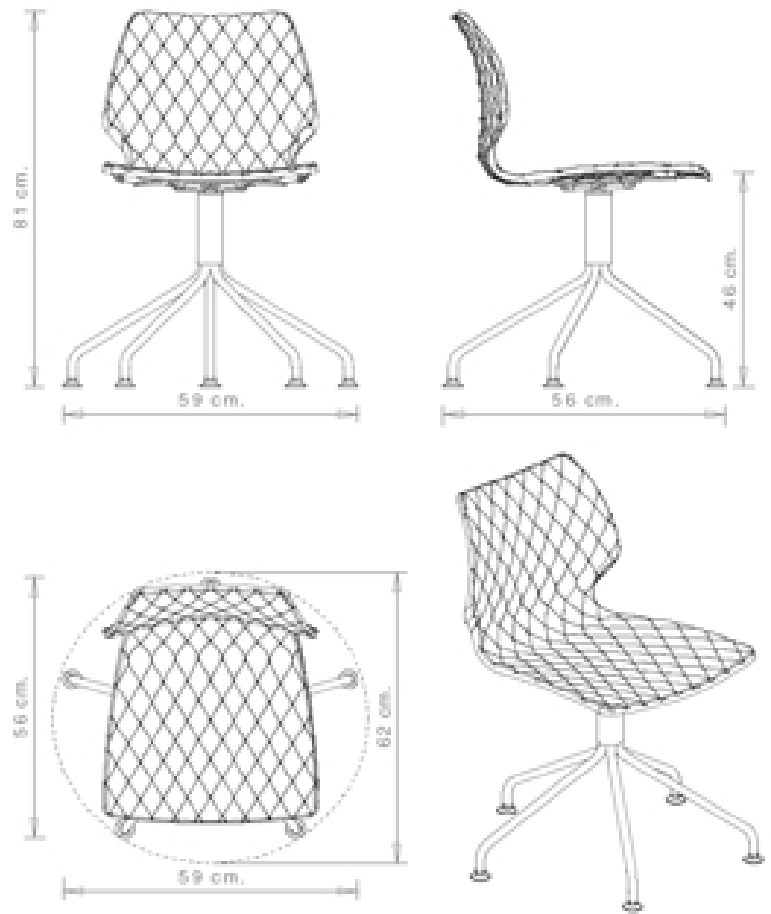
USES

coffee & restaurants, office and waiting areas, outdoor,

Uni 558-DP

UNI COLLECTION:

Uni 550, Uni 550M, Uni 378, Uni 378M, Uni 378B, Uni 378B-M, Uni 380, Uni 380M, Uni 380B, Uni 380B-M, Uni 562, Uni 562M, Uni 386, Uni 386M, Uni 602, Uni 602M, Uni 603, Uni 603M, Uni 551, Uni 551M, Uni 552, Uni 552M, Uni 552G, Uni 552M-G, Uni 552T, Uni 552G-T, Uni 558-DP, Uni 558M-DP, Uni 558-DR, Uni 558M-DR, Uni 553, Uni 553M, Uni 577, Uni 577M, Uni 544, Uni 565, Uni 391, Uni 391M, Uni 393, Uni 393M, Uni 220, Uni 221, Uni 222, Uni 223, Trolley 536,



Swivel chair with 5 ways aluminium frame. Polypropylene shell.

WEIGHT

6,9 kg

PACK

0,50 m³

PIECES PER BOX

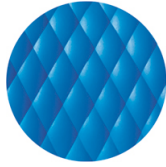
2

FINISHES SEATING

PP POLYPROPYLENE



RAL 9016 Traffic white



NCS S2060-B Azure



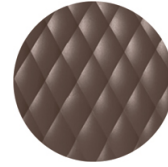
RAL 3000 Flame red



RAL 7016 Anthracite
grey



RAL 2003 Pastel
orange



NCS S7005-Y50R
Cocoa



RAL 9005 Jet black



RAL 4008 Signal violet



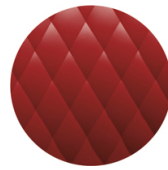
PANTONE 380 C
Boss green



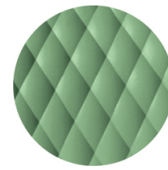
NCS S4005-Y50R
Turtle-dove



RAL 1004 Golden
yellow



PANTONE 18-1438
Marsala



RAL 6021 Pale green

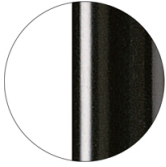
FRAMES

AL PSH POLISHED ALUMINIUM



Polished aluminium

AL VR PAINTED ALUMINIUM



RAL 9005
VR Jet black

USES

coffee & restaurants, office and waiting areas, outdoor,

Uni 558M-DP



UNI COLLECTION:

Uni 550, Uni 550M, Uni 378, Uni 378M, Uni 378B, Uni 378B-M, Uni 380, Uni 380M, Uni 380B, Uni 380B-M, Uni 562, Uni 562M, Uni 386, Uni 386M, Uni 602, Uni 602M, Uni 603, Uni 603M, Uni 551, Uni 551M, Uni 552, Uni 552M, Uni 552G, Uni 552M-G, Uni 552T, Uni 552G-T, Uni 558-DP, Uni 558M-DP, Uni 558-DR, Uni 558M-DR, Uni 553, Uni 553M, Uni 577, Uni 577M, Uni 544, Uni 565, Uni 391, Uni 391M, Uni 393, Uni 393M, Uni 220, Uni 221, Uni 222, Uni 223, Trolley 536,



Swivel chair with 5 ways, aluminium frame. Upholstered polypropylene shell.

WEIGHT

8,8 Kg

PACK0,50 m³**PIECES PER BOX**

1

FINISHES SEATING

TE FABRICS



Citadel Camira
+ 16 colours



Medley Gabriel
+ 14 colours



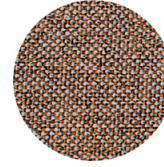
Inca Abitex
+ 15 colours



Crazy Flukso
+ 7 colours



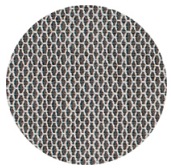
Xtreme Camira
+ 16 colours



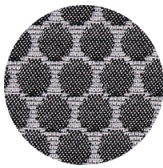
Rivet Camira
+ 12 colours



Valencia Spradling
+ 17 colours



Criss Cross Gabriel
+ 19 colours



Bubble Flukso
+ 9 colours



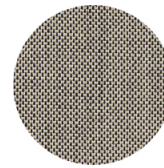
Europost 2 Gabriel
+ 16 colours



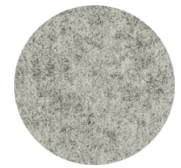
Fame Gabriel
+ 23 colours



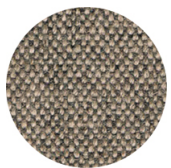
Parotega NF
Skai Hornschuh
+ 8 colours



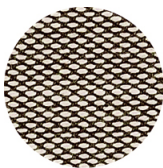
Balta Vescom
+ 12 colours



Blazer Camira
+ 25 colours



Main line flax Camira
+ 13 colours



Steelcut trio 3
Kvadrat
+ 20 colours

PP POLYPROPYLENE



RAL 9016 Traffic white



NCS S2060-B Azure



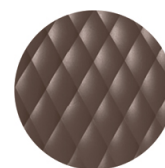
RAL 3000 Flame red



RAL 7016 Anthracite
grey



RAL 2003 Pastel
orange



NCS S7005-Y50R
Cocoa



RAL 9005 Jet black



RAL 4008 Signal violet



PANTONE 380 C
Boss green



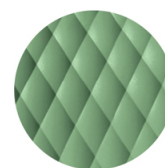
NCS S4005-Y50R
Turtle-dove



RAL 1004 Golden
yellow



PANTONE 18-1438
Marsala



RAL 6021 Pale green

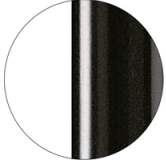
FRAMES

AL PSH POLISHED ALUMINIUM



Polished aluminium

AL VR PAINTED ALUMINIUM



RAL 9005
VR Jet black

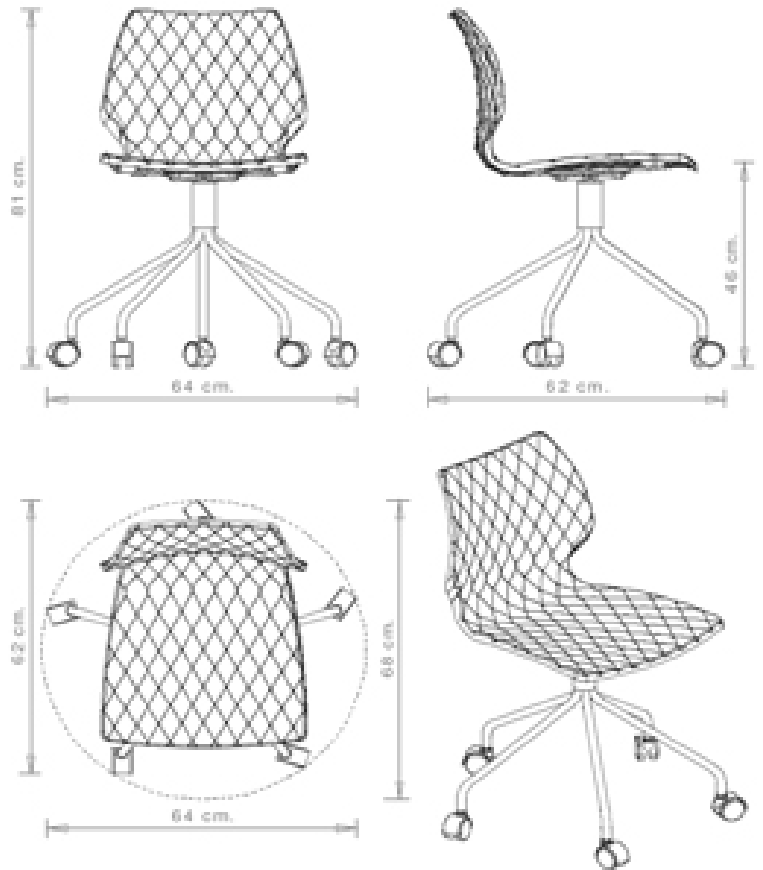
USES

coffee & restaurants, office and waiting areas, outdoor,

Uni 558-DR

UNI COLLECTION:

Uni 550, Uni 550M, Uni 378, Uni 378M, Uni 378B, Uni 378B-M, Uni 380, Uni 380M, Uni 380B, Uni 380B-M, Uni 562, Uni 562M, Uni 386, Uni 386M, Uni 602, Uni 602M, Uni 603, Uni 603M, Uni 551, Uni 551M, Uni 552, Uni 552M, Uni 552G, Uni 552M-G, Uni 552T, Uni 552G-T, Uni 558-DP, Uni 558M-DP, Uni 558-DR, Uni 558M-DR, Uni 553, Uni 553M, Uni 577, Uni 577M, Uni 544, Uni 565, Uni 391, Uni 391M, Uni 393, Uni 393M, Uni 220, Uni 221, Uni 222, Uni 223, Trolley 536,



Swivel chair with 5 ways on castors, aluminium frame. Polypropylene shell.

WEIGHT

7 kg

PACK

0,50 m³

PIECES PER BOX

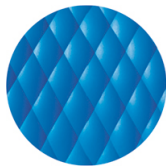
2

FINISHES SEATING

PP POLYPROPYLENE



RAL 9016 Traffic white



NCS S2060-B Azure



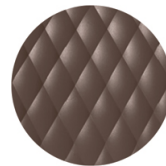
RAL 3000 Flame red



RAL 7016 Anthracite
grey



RAL 2003 Pastel
orange



NCS S7005-Y50R
Cocoa



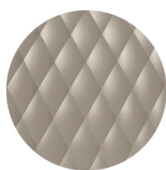
RAL 9005 Jet black



RAL 4008 Signal violet



PANTONE 380 C
Boss green



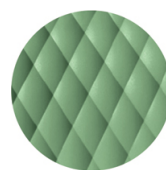
NCS S4005-Y50R
Turtle-dove



RAL 1004 Golden
yellow



PANTONE 18-1438
Marsala



RAL 6021 Pale green

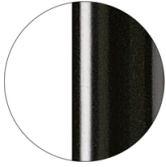
FRAMES

AL PSH POLISHED ALUMINIUM



Polished aluminium

AL VR PAINTED ALUMINIUM



RAL 9005
VR Jet black

USES

coffee & restaurants, office and waiting areas, outdoor,

Uni 558M-DR



UNI COLLECTION:

Uni 550, Uni 550M, Uni 378, Uni 378M, Uni 378B, Uni 378B-M, Uni 380, Uni 380M, Uni 380B, Uni 380B-M, Uni 562, Uni 562M, Uni 386, Uni 386M, Uni 602, Uni 602M, Uni 603, Uni 603M, Uni 551, Uni 551M, Uni 552, Uni 552M, Uni 552G, Uni 552M-G, Uni 552T, Uni 552G-T, Uni 558-DP, Uni 558M-DP, Uni 558-DR, Uni 558M-DR, Uni 553, Uni 553M, Uni 577, Uni 577M, Uni 544, Uni 565, Uni 391, Uni 391M, Uni 393, Uni 393M, Uni 220, Uni 221, Uni 222, Uni 223, Trolley 536,



Swivel chair with 5 ways on castors, aluminium frame. Upholstered polypropylene shell.

WEIGHT

8,8 Kg

PACK0,50 m³**PIECES PER BOX**

1

FINISHES SEATING

TE FABRICS



Citadel Camira
+ 16 colours



Medley Gabriel
+ 14 colours



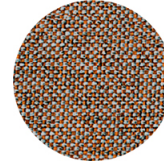
Inca Abitex
+ 15 colours



Crazy Flukso
+ 7 colours



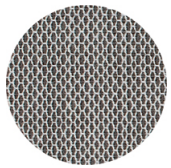
Xtreme Camira
+ 16 colours



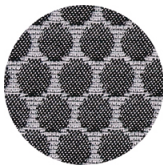
Rivet Camira
+ 12 colours



Valencia Spradling
+ 17 colours



Criss Cross Gabriel
+ 19 colours



Bubble Flukso
+ 9 colours



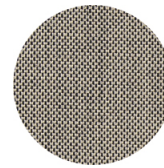
Europost 2 Gabriel
+ 16 colours



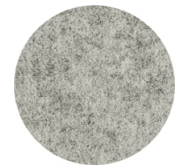
Fame Gabriel
+ 23 colours



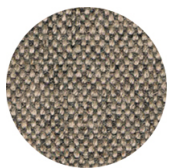
Parotega NF
Skai Hornschuh
+ 8 colours



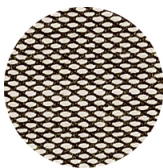
Balta Vescom
+ 12 colours



Blazer Camira
+ 25 colours



Main line flax Camira
+ 13 colours



Steelcut trio 3
Kvadrat
+ 20 colours

PP POLYPROPYLENE



RAL 9016 Traffic white



NCS S2060-B Azure



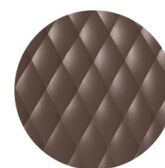
RAL 3000 Flame red



RAL 7016 Anthracite
grey



RAL 2003 Pastel
orange



NCS S7005-Y50R
Cocoa



RAL 9005 Jet black



RAL 4008 Signal violet



PANTONE 380 C
Boss green



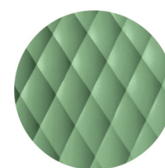
NCS S4005-Y50R
Turtle-dove



RAL 1004 Golden
yellow



PANTONE 18-1438
Marsala



RAL 6021 Pale green

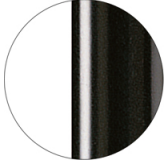
FRAMES

AL PSH POLISHED ALUMINIUM



Polished aluminium

AL VR PAINTED ALUMINIUM



RAL 9005
VR Jet black

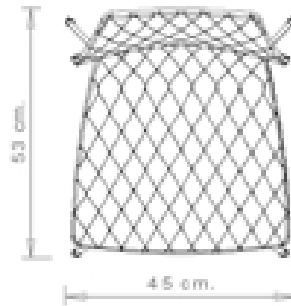
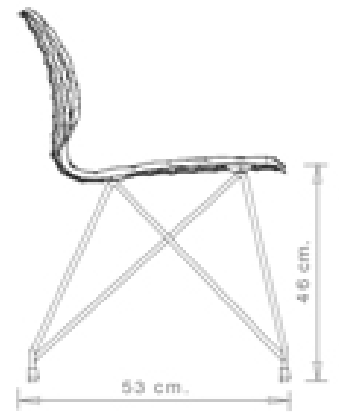
USES

coffee & restaurants, office and waiting areas, outdoor,

Uni 553

UNI COLLECTION:

Uni 550, Uni 550M, Uni 378, Uni 378M, Uni 378B, Uni 378B-M, Uni 380, Uni 380M, Uni 380B, Uni 380B-M, Uni 562, Uni 562M, Uni 386, Uni 386M, Uni 602, Uni 602M, Uni 603, Uni 603M, Uni 551, Uni 551M, Uni 552, Uni 552M, Uni 552G, Uni 552M-G, Uni 552T, Uni 552G-T, Uni 558-DP, Uni 558M-DP, Uni 558-DR, Uni 558M-DR, Uni 553, Uni 553M, Uni 577, Uni 577M, Uni 544, Uni 565, Uni 391, Uni 391M, Uni 393, Uni 393M, Uni 220, Uni 221, Uni 222, Uni 223, Trolley 536,



Chair with wire steel frame. Polypropylene shell.

WEIGHT

5 kg

PACK

0,30 m³

PIECES PER BOX

2

FINISHES SEATING

PP POLYPROPYLENE



RAL 9016 Traffic white



NCS S2060-B Azure



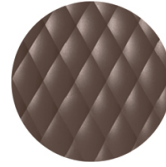
RAL 3000 Flame red



RAL 7016 Anthracite
grey



RAL 2003 Pastel
orange



NCS S7005-Y50R
Cocoa



RAL 9005 Jet black



RAL 4008 Signal violet



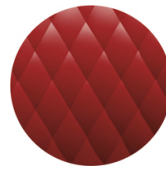
PANTONE 380 C
Boss green



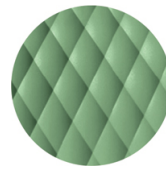
NCS S4005-Y50R
Turtle-dove



RAL 1004 Golden
yellow



PANTONE 18-1438
Marsala



RAL 6021 Pale green

FRAMES

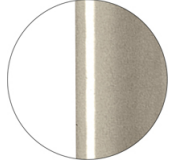
AC STEEL



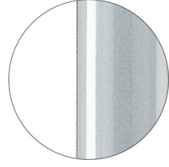
RAL 9016
VR Traffic white



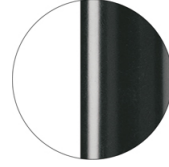
RAL 9010
VR Pure white



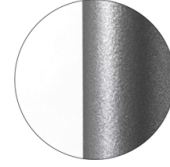
PANTONE 402 C
VR Turtle-dove



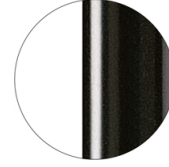
RAL 9006
VR White aluminium



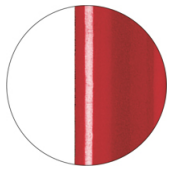
RAL 7016
VR Anthracite grey



VR Pewter



RAL 9005
VR Jet black



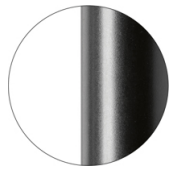
RAL 3003
VR Ruby red



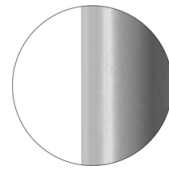
RAL 8017
VR Chocolate brown



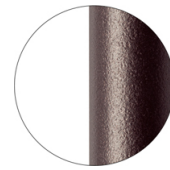
RAL 6005
VR Moss green



RAL 9005
VR Matt Jet Black



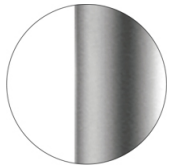
RAL 7037
VR Matt Dusty grey



VR Rough metallic
bronze



CR Chrome



CR S Satin chrome

USES

coffee & restaurants, office and waiting areas, outdoor,

Uni 553M



UNI COLLECTION:

Uni 550, Uni 550M, Uni 378, Uni 378M, Uni 378B, Uni 378B-M, Uni 380, Uni 380M, Uni 380B, Uni 380B-M, Uni 562, Uni 562M, Uni 386, Uni 386M, Uni 602, Uni 602M, Uni 603, Uni 603M, Uni 551, Uni 551M, Uni 552, Uni 552M, Uni 552G, Uni 552M-G, Uni 552T, Uni 552G-T, Uni 558-DP, Uni 558M-DP, Uni 558-DR, Uni 558M-DR, Uni 553, Uni 553M, Uni 577, Uni 577M, Uni 544, Uni 565, Uni 391, Uni 391M, Uni 393, Uni 393M, Uni 220, Uni 221, Uni 222, Uni 223, Trolley 536,



Chair with wire steel frame. Upholstered polypropylene shell.

WEIGHT

7,15Kg

PACK0,24 m³**PIECES PER BOX**

1

FINISHES SEATING

TE FABRICS



Citadel Camira
+ 16 colours



Medley Gabriel
+ 14 colours



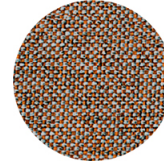
Inca Abitex
+ 15 colours



Crazy Flukso
+ 7 colours



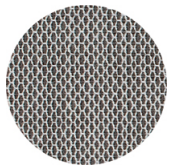
Xtreme Camira
+ 16 colours



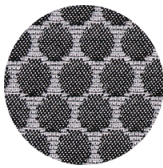
Rivet Camira
+ 12 colours



Valencia Spradling
+ 17 colours



Criss Cross Gabriel
+ 19 colours



Bubble Flukso
+ 9 colours



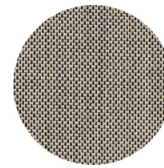
Europost 2 Gabriel
+ 16 colours



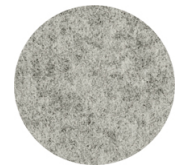
Fame Gabriel
+ 23 colours



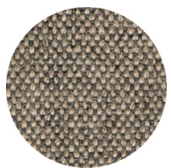
Parotega NF
Skai Hornschuh
+ 8 colours



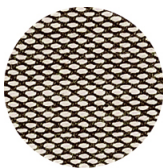
Balta Vescom
+ 12 colours



Blazer Camira
+ 25 colours



Main line flax Camira
+ 13 colours

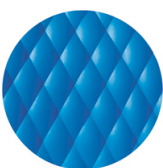


Steelcut trio 3
Kvadrat
+ 20 colours

PP POLYPROPYLENE



RAL 9016 Traffic white



NCS S2060-B Azure



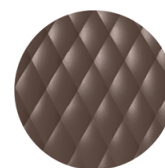
RAL 3000 Flame red



RAL 7016 Anthracite
grey



RAL 2003 Pastel
orange



NCS S7005-Y50R
Cocoa



RAL 9005 Jet black



RAL 4008 Signal violet



PANTONE 380 C
Boss green



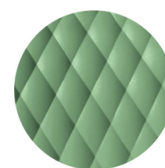
NCS S4005-Y50R
Turtle-dove



RAL 1004 Golden
yellow



PANTONE 18-1438
Marsala



RAL 6021 Pale green

FRAMES

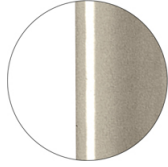
AC STEEL



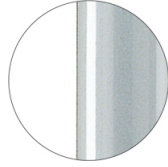
RAL 9016
VR Traffic white



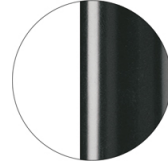
RAL 9010
VR Pure white



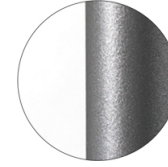
PANTONE 402 C
VR Turtle-dove



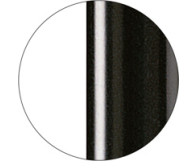
RAL 9006
VR White aluminium



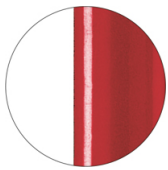
RAL 7016
VR Anthracite grey



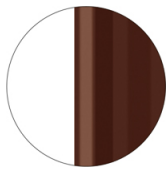
VR Pewter



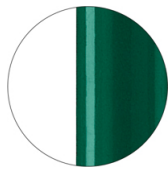
RAL 9005
VR Jet black



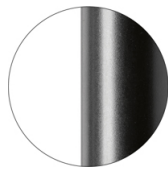
RAL 3003
VR Ruby red



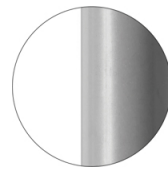
RAL 8017
VR Chocolate brown



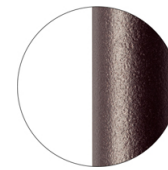
RAL 6005
VR Moss green



RAL 9005
VR Matt Jet Black



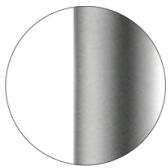
RAL 7037
VR Matt Dusty grey



VR Rough metallic
bronze



CR Chrome



CR S Satin chrome

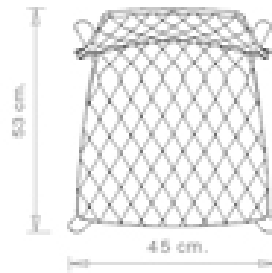
USES

coffee & restaurants, office and waiting areas, outdoor,

Uni 577

UNI COLLECTION:

Uni 550, Uni 550M, Uni 378, Uni 378M, Uni 378B, Uni 378B-M, Uni 380, Uni 380M, Uni 380B, Uni 380B-M, Uni 562, Uni 562M, Uni 386, Uni 386M, Uni 602, Uni 602M, Uni 603, Uni 603M, Uni 551, Uni 551M, Uni 552, Uni 552M, Uni 552G, Uni 552M-G, Uni 552T, Uni 552G-T, Uni 558-DP, Uni 558M-DP, Uni 558-DR, Uni 558M-DR, Uni 553, Uni 553M, Uni 577, Uni 577M, Uni 544, Uni 565, Uni 391, Uni 391M, Uni 393, Uni 393M, Uni 220, Uni 221, Uni 222, Uni 223, Trolley 536,



Chair with beech wood frame, 4 rounded legs. Polypropylene shell.

WEIGHT

4,7 kg

PACK

0,30 m³

PIECES PER BOX

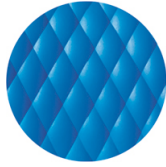
2

FINISHES SEATING

PP POLYPROPYLENE



RAL 9016 Traffic white



NCS S2060-B Azure



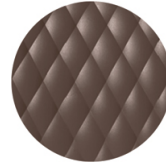
RAL 3000 Flame red



RAL 7016 Anthracite
grey



RAL 2003 Pastel
orange



NCS S7005-Y50R
Cocoa



RAL 9005 Jet black



RAL 4008 Signal violet



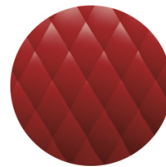
PANTONE 380 C
Boss green



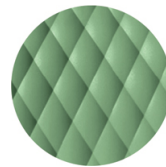
NCS S4005-Y50R
Turtle-dove



RAL 1004 Golden
yellow



PANTONE 18-1438
Marsala



RAL 6021 Pale green

FRAMES

LE WOOD

Maple stained beech wood



Natural beech wood



Wengé stained beech wood



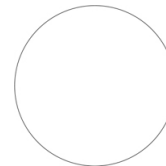
Black stained beech wood



'Canaletto' walnut stained beech wood



Oak stained beech wood



Stained according to sample

CERTIFICATIONS

- > UNI/EN 16139:2013 - Par.4.1. Generale. 4.2 Cesoiamento (27/10/15)
- > UNI/EN 16139:2013 - Par.4.3. Stabilità (27/10/15)
- > UNI/EN 16139:2013 - Par.7. Informazioni per l'uso (27/10/15)
- > UNI/EN 16139:2013 - Prova 1. Carico statico sedile e schienale: 2-Uso estremo (27/10/15)
- > UNI/EN 16139:2013 - Prova 12. Carico statico gambe anteriori: 2-Uso estremo (27/10/15)
- > UNI/EN 16139:2013 - Prova 13. Carico statico gambe laterali: 2-Uso estremo (27/10/15)
- > UNI/EN 16139:2013 - Prova 14. Prova di urto sul sedile: 2-Uso estremo (27/10/15)
- > UNI/EN 16139:2013 - Prova 15. Prova di urto sullo schienale: 2-Uso estremo (27/10/15)
- > UNI/EN 16139:2013 - Prova 2. Carico statico sul fronte anteriore: 2-Uso estremo (27/10/15)
- > UNI/EN 16139:2013 - Prova 3. Carico verticale sullo schienale: 2-Uso estremo (27/10/15)
- > UNI/EN 16139:2013 - Prova 8. Prova di fatica sedile e schienale: 2-Uso estremo (27/10/15)
- > UNI/EN 16139:2013 - Prova 9. Prova di fatica sul bordo anteriore: 2-Uso estremo (27/10/15)

USES

coffee & restaurants, office and waiting areas, outdoor,

Uni 577M

UNI COLLECTION:

Uni 550, Uni 550M, Uni 378, Uni 378M, Uni 378B, Uni 378B-M, Uni 380, Uni 380M, Uni 380B, Uni 380B-M, Uni 562, Uni 562M, Uni 386, Uni 386M, Uni 602, Uni 602M, Uni 603, Uni 603M, Uni 551, Uni 551M, Uni 552, Uni 552M, Uni 552G, Uni 552M-G, Uni 552T, Uni 552G-T, Uni 558-DP, Uni 558M-DP, Uni 558-DR, Uni 558M-DR, Uni 553, Uni 553M, Uni 577, Uni 577M, Uni 544, Uni 565, Uni 391, Uni 391M, Uni 393, Uni 393M, Uni 220, Uni 221, Uni 222, Uni 223, Trolley 536,



Chair with beech wood frame, 4 rounded legs. Upholstered polypropylene shell.

WEIGHT

6,85 Kg

PACK

0,24 m³

PIECES PER BOX

1

FINISHES SEATING

TE FABRICS



Citadel Camira
+ 16 colours



Medley Gabriel
+ 14 colours



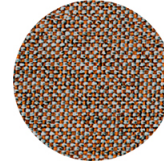
Inca Abitex
+ 15 colours



Crazy Flukso
+ 7 colours



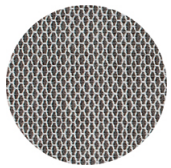
Xtreme Camira
+ 16 colours



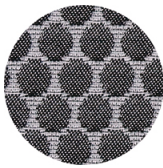
Rivet Camira
+ 12 colours



Valencia Spradling
+ 17 colours



Criss Cross Gabriel
+ 19 colours



Bubble Flukso
+ 9 colours



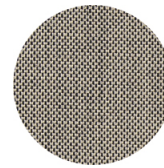
Europost 2 Gabriel
+ 16 colours



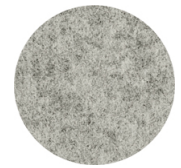
Fame Gabriel
+ 23 colours



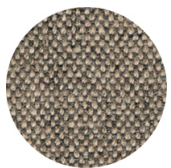
Parotega NF
Skai Hornschuh
+ 8 colours



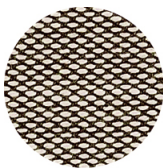
Balta Vescom
+ 12 colours



Blazer Camira
+ 25 colours



Main line flax Camira
+ 13 colours

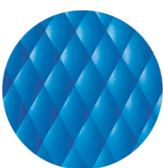


Steelcut trio 3
Kvadrat
+ 20 colours

PP POLYPROPYLENE



RAL 9016 Traffic white



NCS S2060-B Azure



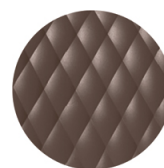
RAL 3000 Flame red



RAL 7016 Anthracite
grey



RAL 2003 Pastel
orange



NCS S7005-Y50R
Cocoa



RAL 9005 Jet black



RAL 4008 Signal violet



PANTONE 380 C
Boss green



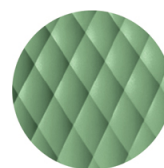
NCS S4005-Y50R
Turtle-dove



RAL 1004 Golden
yellow



PANTONE 18-1438
Marsala



RAL 6021 Pale green

FRAMES

LE WOOD



Maple stained beech wood



Natural beech wood



Wengé stained beech wood



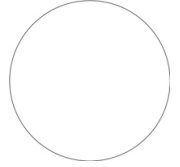
Black stained beech wood



"Canaletto" walnut stained beech wood



Oak stained beech wood



Stained according to sample

USES

coffee & restaurants, office and waiting areas, outdoor,

Uni 544



UNI COLLECTION:

Uni 550, Uni 550M, Uni 378, Uni 378M, Uni 378B, Uni 378B-M, Uni 380, Uni 380M, Uni 380B, Uni 380B-M, Uni 562, Uni 562M, Uni 386, Uni 386M, Uni 602, Uni 602M, Uni 603, Uni 603M, Uni 551, Uni 551M, Uni 552, Uni 552M, Uni 552G, Uni 552M-G, Uni 552T, Uni 552G-T, Uni 558-DP, Uni 558M-DP, Uni 558-DR, Uni 558M-DR, Uni 553, Uni 553M, Uni 577, Uni 577M, Uni 544, Uni 565, Uni 391, Uni 391M, Uni 393, Uni 393M, Uni 220, Uni 221, Uni 222, Uni 223, Trolley 536,



Chair with "C" steel frame and polypropylene shell.

STACKABLE

4

WEIGHT

6,1 kg

PACK0,40 m³**PIECES PER BOX**

4

FINISHES SEATING

PP POLYPROPYLENE



RAL 9016 Traffic white



NCS S2060-B Azure



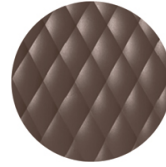
RAL 3000 Flame red



RAL 7016 Anthracite grey



RAL 2003 Pastel orange



NCS S7005-Y50R Cocoa



RAL 9005 Jet black



RAL 4008 Signal violet



PANTONE 380 C Boss green



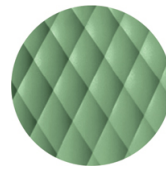
NCS S4005-Y50R Turtle-dove



RAL 1004 Golden yellow



PANTONE 18-1438 Marsala



RAL 6021 Pale green

FRAMES

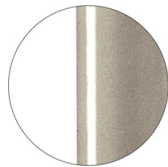
AC STEEL



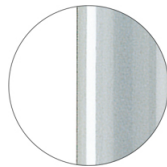
RAL 9016 VR Traffic white



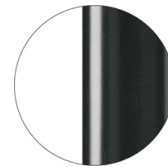
RAL 9010 VR Pure white



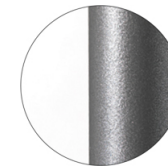
PANTONE 402 C VR Turtle-dove



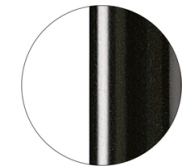
RAL 9006 VR White aluminium



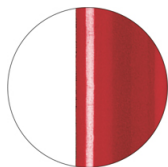
RAL 7016 VR Anthracite grey



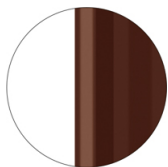
VR Pewter



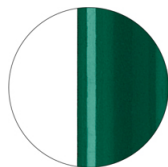
RAL 9005 VR Jet black



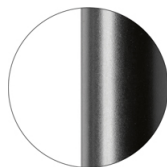
RAL 3003 VR Ruby red



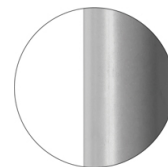
RAL 8017 VR Chocolate brown



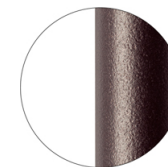
RAL 6005 VR Moss green



RAL 9005 VR Matt Jet Black



RAL 7037 VR Matt Dusty grey



VR Rough metallic bronze

USES

coffee & restaurants, office and waiting areas, outdoor,

Uni 565

UNI COLLECTION:

Uni 550, Uni 550M, Uni 378, Uni 378M, Uni 378B, Uni 378B-M, Uni 380, Uni 380M, Uni 380B, Uni 380B-M, Uni 562, Uni 562M, Uni 386, Uni 386M, Uni 602, Uni 602M, Uni 603, Uni 603M, Uni 551, Uni 551M, Uni 552, Uni 552M, Uni 552G, Uni 552M-G, Uni 552T, Uni 552G-T, Uni 558-DP, Uni 558M-DP, Uni 558-DR, Uni 558M-DR, Uni 553, Uni 553M, Uni 577, Uni 577M, Uni 544, Uni 565, Uni 391, Uni 391M, Uni 393, Uni 393M, Uni 220, Uni 221, Uni 222, Uni 223, Trolley 536,



Chair with "C" steel frame and polypropilene shell.

WEIGHT

5,2 kg

PACK

0,29 m³

PIECES PER BOX

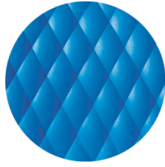
2

FINISHES SEATING

PP POLYPROPYLENE



RAL 9016 Traffic white



NCS S2060-B Azure



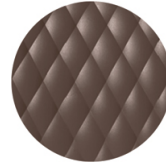
RAL 3000 Flame red



RAL 7016 Anthracite
grey



RAL 2003 Pastel
orange



NCS S7005-Y50R
Cocoa



RAL 9005 Jet black



RAL 4008 Signal violet



PANTONE 380 C
Boss green



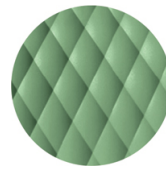
NCS S4005-Y50R
Turtle-dove



RAL 1004 Golden
yellow



PANTONE 18-1438
Marsala



RAL 6021 Pale green

FRAMES

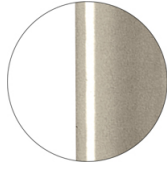
AC STEEL



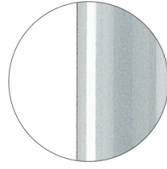
RAL 9016
VR Traffic white



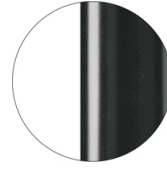
RAL 9010
VR Pure white



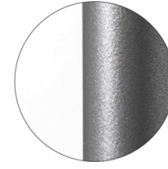
PANTONE 402 C
VR Turtle-dove



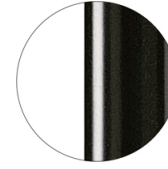
RAL 9006
VR White aluminium



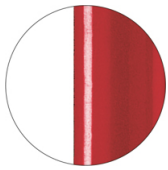
RAL 7016
VR Anthracite grey



VR Pewter



RAL 9005
VR Jet black



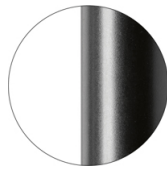
RAL 3003
VR Ruby red



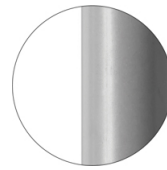
RAL 8017
VR Chocolate brown



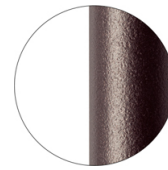
RAL 6005
VR Moss green



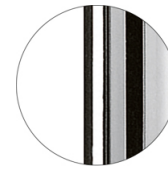
RAL 9005
VR Matt Jet Black



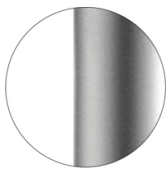
RAL 7037
VR Matt Dusty grey



VR Rough metallic
bronze



CR Chrome



CR S Satin chrome

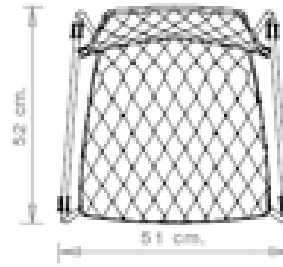
USES

coffee & restaurants, office and waiting areas, outdoor,

Uni 391

UNI COLLECTION:

Uni 550, Uni 550M, Uni 378, Uni 378M, Uni 378B, Uni 378B-M, Uni 380, Uni 380M, Uni 380B, Uni 380B-M, Uni 562, Uni 562M, Uni 386, Uni 386M, Uni 602, Uni 602M, Uni 603, Uni 603M, Uni 551, Uni 551M, Uni 552, Uni 552M, Uni 552G, Uni 552M-G, Uni 552T, Uni 552G-T, Uni 558-DP, Uni 558M-DP, Uni 558-DR, Uni 558M-DR, Uni 553, Uni 553M, Uni 577, Uni 577M, Uni 544, Uni 565, Uni 391, Uni 391M, Uni 393, Uni 393M, Uni 220, Uni 221, Uni 222, Uni 223, Trolley 536,



Barstool with steel sled frame, polypropylene shell.

WEIGHT

5,1 Kg

PACK

0,37 m³

PIECES PER BOX

1

FINISHES SEATING

PP POLYPROPYLENE



RAL 9016 Traffic white



NCS S2060-B Azure



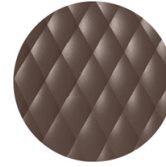
RAL 3000 Flame red



RAL 7016 Anthracite grey



RAL 2003 Pastel orange



NCS S7005-Y50R Cocoa



RAL 9005 Jet black



RAL 4008 Signal violet



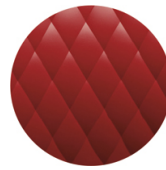
PANTONE 380 C Boss green



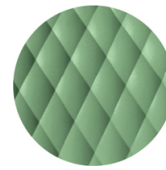
NCS S4005-Y50R Turtle-dove



RAL 1004 Golden yellow



PANTONE 18-1438 Marsala



RAL 6021 Pale green

FRAMES

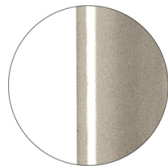
AC STEEL



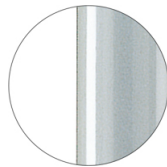
RAL 9016 VR Traffic white



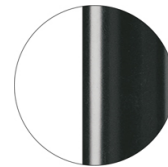
RAL 9010 VR Pure white



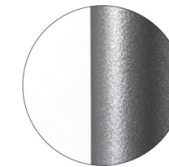
PANTONE 402 C VR Turtle-dove



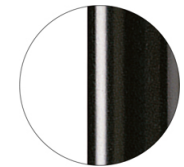
RAL 9006 VR White aluminium



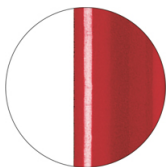
RAL 7016 VR Anthracite grey



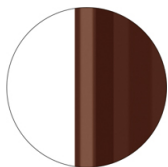
VR Pewter



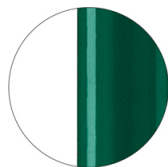
RAL 9005 VR Jet black



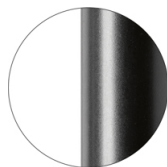
RAL 3003 VR Ruby red



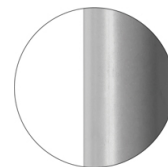
RAL 8017 VR Chocolate brown



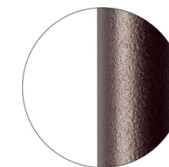
RAL 6005 VR Moss green



RAL 9005 VR Matt Jet Black



RAL 7037 VR Matt Dusty grey



VR Rough metallic bronze



CR Chrome

USES

coffee & restaurants, office and waiting areas, outdoor,

Uni 391M



UNI COLLECTION:

Uni 550, Uni 550M, Uni 378, Uni 378M, Uni 378B, Uni 378B-M, Uni 380, Uni 380M, Uni 380B, Uni 380B-M, Uni 562, Uni 562M, Uni 386, Uni 386M, Uni 602, Uni 602M, Uni 603, Uni 603M, Uni 551, Uni 551M, Uni 552, Uni 552M, Uni 552G, Uni 552M-G, Uni 552T, Uni 552G-T, Uni 558-DP, Uni 558M-DP, Uni 558-DR, Uni 558M-DR, Uni 553, Uni 553M, Uni 577, Uni 577M, Uni 544, Uni 565, Uni 391, Uni 391M, Uni 393, Uni 393M, Uni 220, Uni 221, Uni 222, Uni 223, Trolley 536,



Barstool with steel sled frame, upholstered polypropylene shell.

WEIGHT

7,25 Kg

PACK0,37 m³**PIECES PER BOX**

1

FINISHES SEATING

TE FABRICS



Citadel Camira
+ 16 colours



Medley Gabriel
+ 14 colours



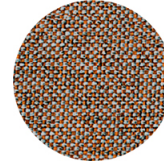
Inca Abitex
+ 15 colours



Crazy Flukso
+ 7 colours



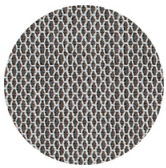
Xtreme Camira
+ 16 colours



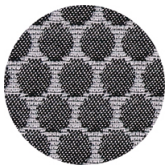
Rivet Camira
+ 12 colours



Valencia Spradling
+ 17 colours



Criss Cross Gabriel
+ 19 colours



Bubble Flukso
+ 9 colours



Europost 2 Gabriel
+ 16 colours



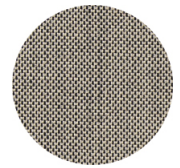
Fame Gabriel
+ 23 colours



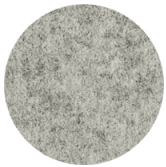
Parotega NF
Skai Hornschuch
+ 8 colours



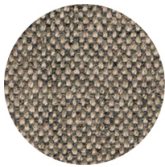
Superb Flukso
+ 13 colours



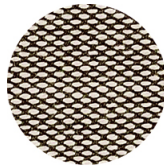
Balta Vescom
+ 12 colours



Blazer Camira
+ 25 colours



Main line flax Camira
+ 13 colours



Steelcut trio 3
Kvadrat
+ 20 colours

PP POLYPROPYLENE



RAL 9016 Traffic white



NCS S2060-B Azure



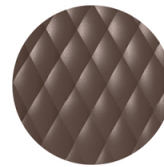
RAL 3000 Flame red



RAL 7016 Anthracite
grey



RAL 2003 Pastel
orange



NCS S7005-Y50R
Cocoa



RAL 9005 Jet black



RAL 4008 Signal violet



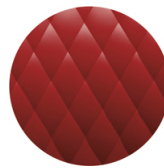
PANTONE 380 C
Boss green



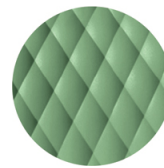
NCS S4005-Y50R
Turtle-dove



RAL 1004 Golden
yellow



PANTONE 18-1438
Marsala



RAL 6021 Pale green

FRAMES

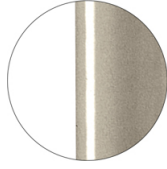
AC STEEL



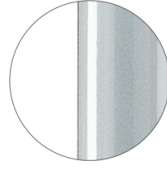
RAL 9016
VR Traffic white



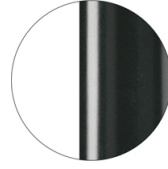
RAL 9010
VR Pure white



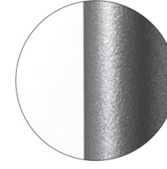
PANTONE 402 C
VR Turtle-dove



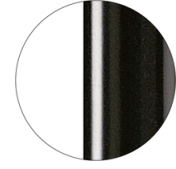
RAL 9006
VR White aluminium



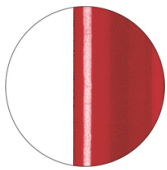
RAL 7016
VR Anthracite grey



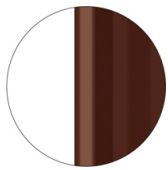
VR Pewter



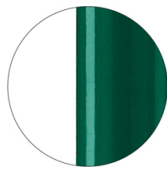
RAL 9005
VR Jet black



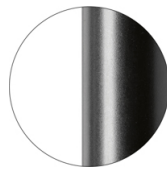
RAL 3003
VR Ruby red



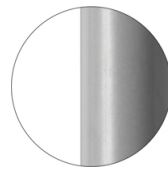
RAL 8017
VR Chocolate brown



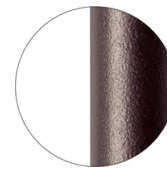
RAL 6005
VR Moss green



RAL 9005
VR Matt Jet Black



RAL 7037
VR Matt Dusty grey



VR Rough metallic
bronze



CR Chrome

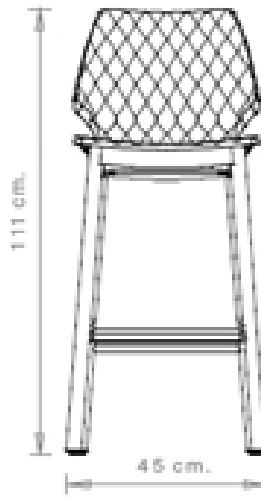
USES

coffee & restaurants, office and waiting areas, outdoor,

Uni 393

UNI COLLECTION:

Uni 550, Uni 550M, Uni 378, Uni 378M, Uni 378B, Uni 378B-M, Uni 380, Uni 380M, Uni 380B, Uni 380B-M, Uni 562, Uni 562M, Uni 386, Uni 386M, Uni 602, Uni 602M, Uni 603, Uni 603M, Uni 551, Uni 551M, Uni 552, Uni 552M, Uni 552G, Uni 552M-G, Uni 552T, Uni 552G-T, Uni 558-DP, Uni 558M-DP, Uni 558-DR, Uni 558M-DR, Uni 553, Uni 553M, Uni 577, Uni 577M, Uni 544, Uni 565, Uni 391, Uni 391M, Uni 393, Uni 393M, Uni 220, Uni 221, Uni 222, Uni 223, Trolley 536,



Barstool with wooden frame, 4 round legs. Polypropylene shell.

WEIGHT

6,6 kg

PACK

0,37 m³

PIECES PER BOX

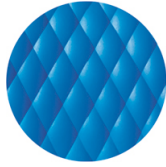
1

FINISHES SEATING

PP POLYPROPYLENE



RAL 9016 Traffic white



NCS S2060-B Azure



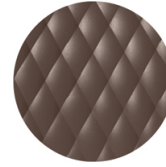
RAL 3000 Flame red



RAL 7016 Anthracite
grey



RAL 2003 Pastel
orange



NCS S7005-Y50R
Cocoa



RAL 9005 Jet black



RAL 4008 Signal violet



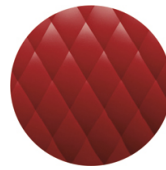
PANTONE 380 C
Boss green



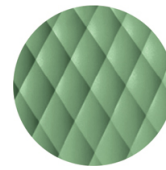
NCS S4005-Y50R
Turtle-dove



RAL 1004 Golden
yellow



PANTONE 18-1438
Marsala



RAL 6021 Pale green

FRAMES

LE WOOD

Maple stained beech wood



Natural beech wood



Wengé stained beech wood



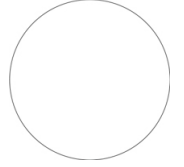
Black stained beech wood



'Canaletto' walnut stained beech wood



Oak stained beech wood



Stained according to sample

CERTIFICATIONS

- > UNI/EN 16139:2013 - Prova 11. Prova di durata appoggiapiedi: 1-Uso generale (08/02/16)
- > UNI/EN 16139:2013 - Prova 12. Prova di carico statico gambe anteriori: 1-Uso generale (08/02/16)
- > UNI/EN 16139:2013 - Prova 13. Prova di carico statico gambe laterali: 1-Uso generale (08/02/16)
- > UNI/EN 16139:2013 - Prova 4. Prova carico statico appoggiapiedi: 1-Uso generale (08/02/16)
- > UNI/EN 16139:2013 - Prova 8. Prova di fatica sedile e schienale: 1-Uso generale (08/02/16)

USES

coffee & restaurants, office and waiting areas, outdoor,

Uni 393M



UNI COLLECTION:

Uni 550, Uni 550M, Uni 378, Uni 378M, Uni 378B, Uni 378B-M, Uni 380, Uni 380M, Uni 380B, Uni 380B-M, Uni 562, Uni 562M, Uni 386, Uni 386M, Uni 602, Uni 602M, Uni 603, Uni 603M, Uni 551, Uni 551M, Uni 552, Uni 552M, Uni 552G, Uni 552M-G, Uni 552T, Uni 552G-T, Uni 558-DP, Uni 558M-DP, Uni 558-DR, Uni 558M-DR, Uni 553, Uni 553M, Uni 577, Uni 577M, Uni 544, Uni 565, Uni 391, Uni 391M, Uni 393, Uni 393M, Uni 220, Uni 221, Uni 222, Uni 223, Trolley 536,



Barstool with wooden frame, 4 round legs. Upholstered polypropylene shell.

WEIGHT

8,75 Kg

PACK0,37 m³**PIECES PER BOX**

1

FINISHES SEATING

TE FABRICS



Citadel Camira
+ 16 colours



Medley Gabriel
+ 14 colours



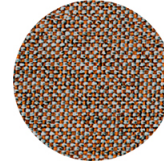
Inca Abitex
+ 15 colours



Crazy Flukso
+ 7 colours



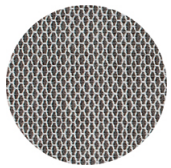
Xtreme Camira
+ 16 colours



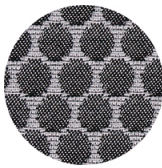
Rivet Camira
+ 12 colours



Valencia Spradling
+ 17 colours



Criss Cross Gabriel
+ 19 colours



Bubble Flukso
+ 9 colours



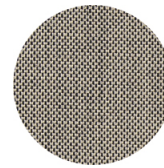
Europost 2 Gabriel
+ 16 colours



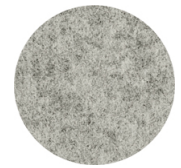
Fame Gabriel
+ 23 colours



Parotega NF
Skai Hornschuch
+ 8 colours



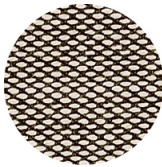
Balta Vescom
+ 12 colours



Blazer Camira
+ 25 colours



Main line flax Camira
+ 13 colours

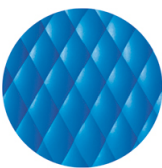


Steelcut trio 3
Kvadrat
+ 20 colours

PP POLYPROPYLENE



RAL 9016 Traffic white



NCS S2060-B Azure



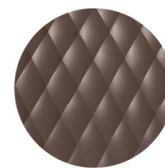
RAL 3000 Flame red



RAL 7016 Anthracite
grey



RAL 2003 Pastel
orange



NCS S7005-Y50R
Cocoa



RAL 9005 Jet black



RAL 4008 Signal violet



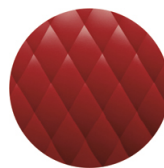
PANTONE 380 C
Boss green



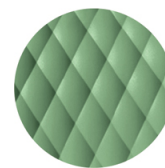
NCS S4005-Y50R
Turtle-dove



RAL 1004 Golden
yellow



PANTONE 18-1438
Marsala



RAL 6021 Pale green

FRAMES

LE WOOD



Maple stained beech wood



Natural beech wood



Wengé stained beech wood



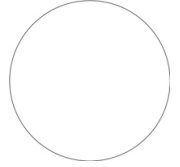
Black stained beech wood



"Canaletto" walnut stained beech wood



Oak stained beech wood



Stained according to sample

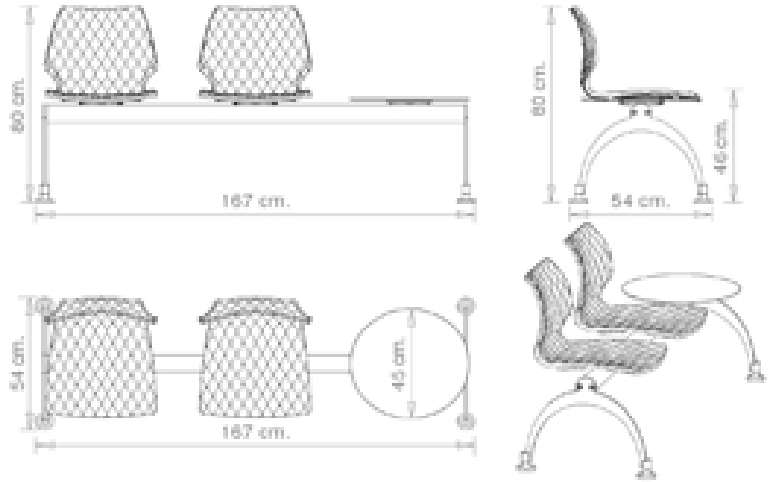
USES

coffee & restaurants, office and waiting areas, outdoor,

Uni 220

UNI COLLECTION:

Uni 550, Uni 550M, Uni 378, Uni 378M, Uni 378B, Uni 378B-M, Uni 380, Uni 380M, Uni 380B, Uni 380B-M, Uni 562, Uni 562M, Uni 386, Uni 386M, Uni 602, Uni 602M, Uni 603, Uni 603M, Uni 551, Uni 551M, Uni 552, Uni 552M, Uni 552G, Uni 552M-G, Uni 552T, Uni 552G-T, Uni 558-DP, Uni 558M-DP, Uni 558-DR, Uni 558M-DR, Uni 553, Uni 553M, Uni 577, Uni 577M, Uni 544, Uni 565, Uni 391, Uni 391M, Uni 393, Uni 393M, Uni 220, Uni 221, Uni 222, Uni 223, Trolley 536,



Seating system on bar, 2 seats with shelf; steel frame, polypropylene seat.

WEIGHT

24,6 kg

PACK

0,89 m³

PIECES PER BOX

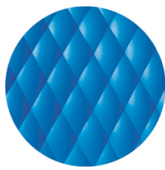
1

FINISHES SEATING

PP POLYPROPYLENE



RAL 9016 Traffic white



NCS S2060-B Azure



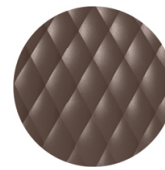
RAL 3000 Flame red



RAL 7016 Anthracite grey



RAL 2003 Pastel orange



NCS S7005-Y50R Cocoa



RAL 9005 Jet black



RAL 4008 Signal violet



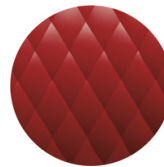
PANTONE 380 C Boss green



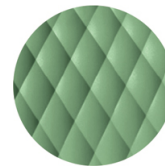
NCS S4005-Y50R Turtle-dove



RAL 1004 Golden yellow



PANTONE 18-1438 Marsala



RAL 6021 Pale green

FRAMES

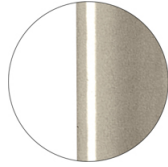
AC STEEL



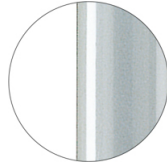
RAL 9016
VR Traffic white



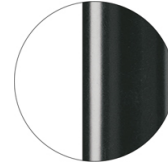
RAL 9010
VR Pure white



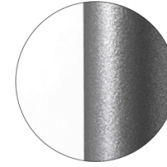
PANTONE 402 C
VR Turtle-dove



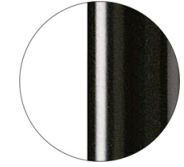
RAL 9006
VR White aluminium



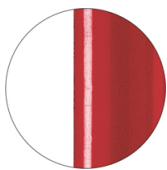
RAL 7016
VR Anthracite grey



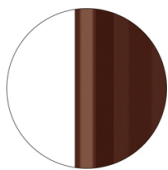
VR Pewter



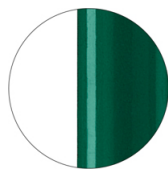
RAL 9005
VR Jet black



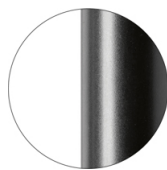
RAL 3003
VR Ruby red



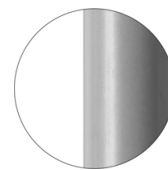
RAL 8017
VR Chocolate brown



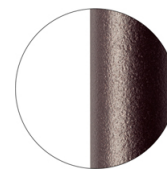
RAL 6005
VR Moss green



RAL 9005
VR Matt Jet Black



RAL 7037
VR Matt Dusty grey



VR Rough metallic
bronze

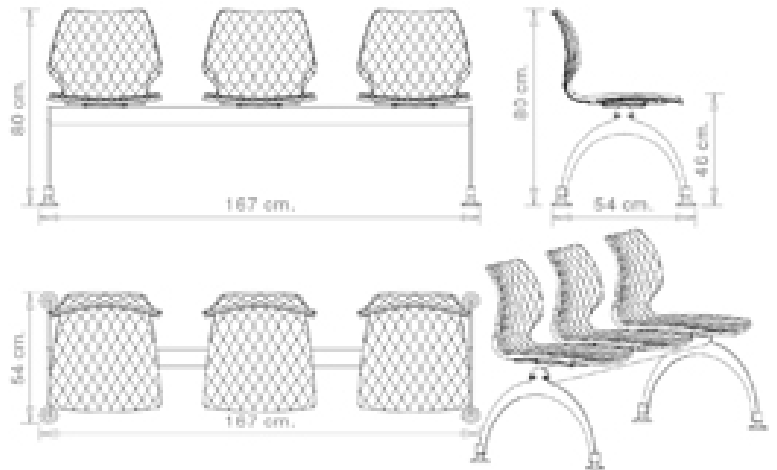
USES

coffee & restaurants, office and waiting areas, outdoor,

Uni 221

UNI COLLECTION:

Uni 550, Uni 550M, Uni 378, Uni 378M, Uni 378B, Uni 378B-M, Uni 380, Uni 380M, Uni 380B, Uni 380B-M, Uni 562, Uni 562M, Uni 386, Uni 386M, Uni 602, Uni 602M, Uni 603, Uni 603M, Uni 551, Uni 551M, Uni 552, Uni 552M, Uni 552G, Uni 552M-G, Uni 552T, Uni 552G-T, Uni 558-DP, Uni 558M-DP, Uni 558-DR, Uni 558M-DR, Uni 553, Uni 553M, Uni 577, Uni 577M, Uni 544, Uni 565, Uni 391, Uni 391M, Uni 393, Uni 393M, Uni 220, Uni 221, Uni 222, Uni 223, Trolley 536,



Seating system on bar, 3 seats; steel frame, polypropylene seat.

WEIGHT

23 kg

PACK

0,89 m³

PIECES PER BOX

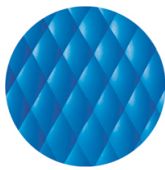
1

FINISHES SEATING

PP POLYPROPYLENE



RAL 9016 Traffic white



NCS S2060-B Azure



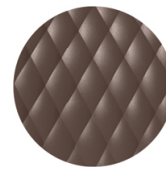
RAL 3000 Flame red



RAL 7016 Anthracite grey



RAL 2003 Pastel orange



NCS S7005-Y50R Cocoa



RAL 9005 Jet black



RAL 4008 Signal violet



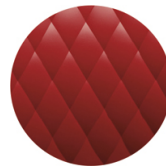
PANTONE 380 C Boss green



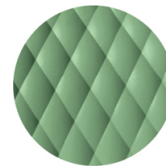
NCS S4005-Y50R Turtle-dove



RAL 1004 Golden yellow



PANTONE 18-1438 Marsala



RAL 6021 Pale green

FRAMES

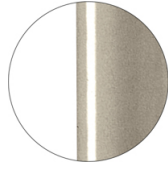
AC STEEL



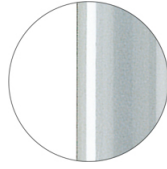
RAL 9016
VR Traffic white



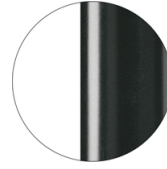
RAL 9010
VR Pure white



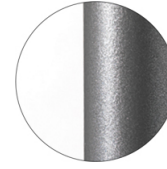
PANTONE 402 C
VR Turtle-dove



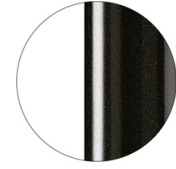
RAL 9006
VR White aluminium



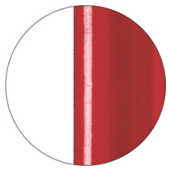
RAL 7016
VR Anthracite grey



VR Pewter



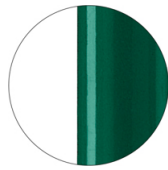
RAL 9005
VR Jet black



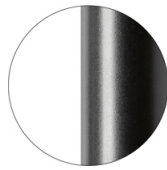
RAL 3003
VR Ruby red



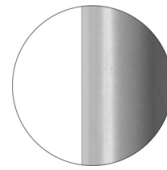
RAL 8017
VR Chocolate brown



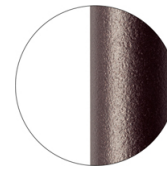
RAL 6005
VR Moss green



RAL 9005
VR Matt Jet Black



RAL 7037
VR Matt Dusty grey



VR Rough metallic
bronze

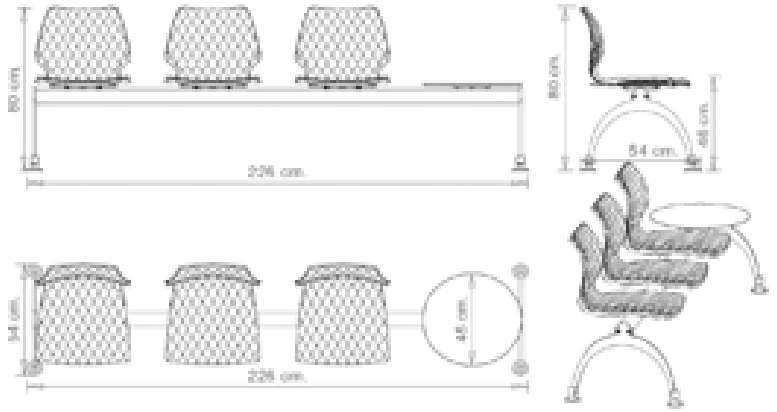
USES

coffee & restaurants, office and waiting areas, outdoor,

Uni 222

UNI COLLECTION:

Uni 550, Uni 550M, Uni 378, Uni 378M, Uni 378B, Uni 378B-M, Uni 380, Uni 380M, Uni 380B, Uni 380B-M, Uni 562, Uni 562M, Uni 386, Uni 386M, Uni 602, Uni 602M, Uni 603, Uni 603M, Uni 551, Uni 551M, Uni 552, Uni 552M, Uni 552G, Uni 552M-G, Uni 552T, Uni 552G-T, Uni 558-DP, Uni 558M-DP, Uni 558-DR, Uni 558M-DR, Uni 553, Uni 553M, Uni 577, Uni 577M, Uni 544, Uni 565, Uni 391, Uni 391M, Uni 393, Uni 393M, Uni 220, Uni 221, Uni 222, Uni 223, Trolley 536,



Seating system on bar, 3 seats with shelf; steel frame, polypropylene seat.

WEIGHT

29,1 kg

PACK

1,25 m³

PIECES PER BOX

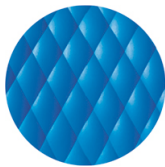
1

FINISHES SEATING

PP POLYPROPYLENE



RAL 9016 Traffic white



NCS S2060-B Azure



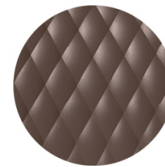
RAL 3000 Flame red



RAL 7016 Anthracite grey



RAL 2003 Pastel orange



NCS S7005-Y50R Cocoa



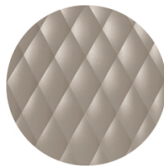
RAL 9005 Jet black



RAL 4008 Signal violet



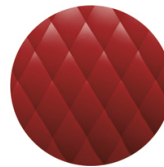
PANTONE 380 C Boss green



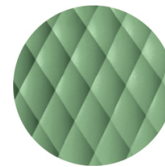
NCS S4005-Y50R Turtle-dove



RAL 1004 Golden yellow



PANTONE 18-1438 Marsala



RAL 6021 Pale green

FRAMES

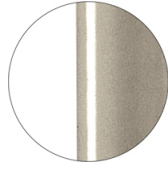
AC STEEL



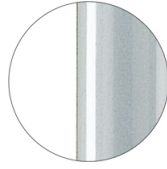
RAL 9016
VR Traffic white



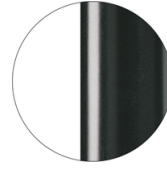
RAL 9010
VR Pure white



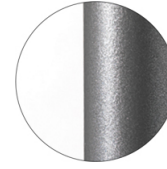
PANTONE 402 C
VR Turtle-dove



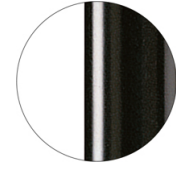
RAL 9006
VR White aluminium



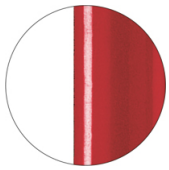
RAL 7016
VR Anthracite grey



VR Pewter



RAL 9005
VR Jet black



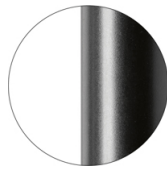
RAL 3003
VR Ruby red



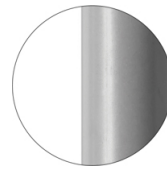
RAL 8017
VR Chocolate brown



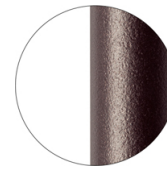
RAL 6005
VR Moss green



RAL 9005
VR Matt Jet Black



RAL 7037
VR Matt Dusty grey



VR Rough metallic
bronze

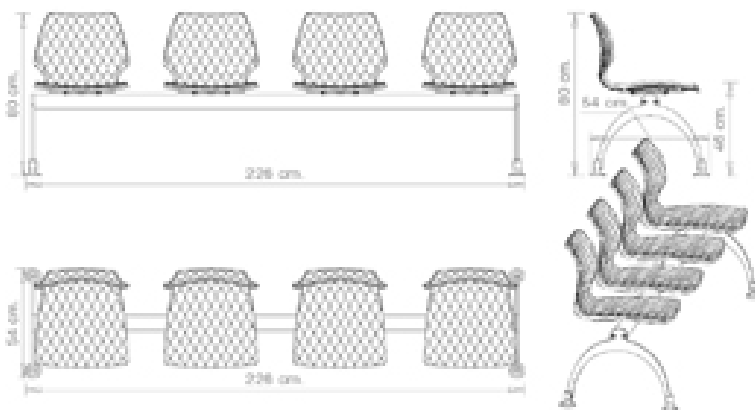
USES

coffee & restaurants, office and waiting areas, outdoor,

Uni 223

UNI COLLECTION:

Uni 550, Uni 550M, Uni 378, Uni 378M, Uni 378B, Uni 378B-M, Uni 380, Uni 380M, Uni 380B, Uni 380B-M, Uni 562, Uni 562M, Uni 386, Uni 386M, Uni 602, Uni 602M, Uni 603, Uni 603M, Uni 551, Uni 551M, Uni 552, Uni 552M, Uni 552G, Uni 552M-G, Uni 552T, Uni 552G-T, Uni 558-DP, Uni 558M-DP, Uni 558-DR, Uni 558M-DR, Uni 553, Uni 553M, Uni 577, Uni 577M, Uni 544, Uni 565, Uni 391, Uni 391M, Uni 393, Uni 393M, Uni 220, Uni 221, Uni 222, Uni 223, Trolley 536,



Seating system on bar, 4 seats; steel frame, polypropylene seat.

WEIGHT

27,5 kg

PACK

1,25 m³

PIECES PER BOX

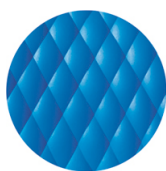
1

FINISHES SEATING

PP POLYPROPYLENE



RAL 9016 Traffic white



NCS S2060-B Azure



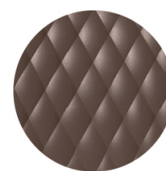
RAL 3000 Flame red



RAL 7016 Anthracite grey



RAL 2003 Pastel orange



NCS S7005-Y50R Cocoa



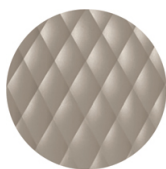
RAL 9005 Jet black



RAL 4008 Signal violet



PANTONE 380 C Boss green



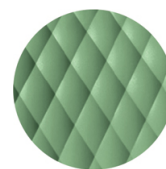
NCS S4005-Y50R Turtle-dove



RAL 1004 Golden yellow



PANTONE 18-1438 Marsala



RAL 6021 Pale green

FRAMES

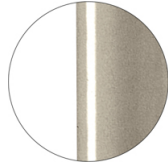
AC STEEL



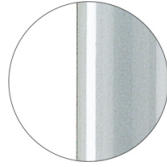
RAL 9016
VR Traffic white



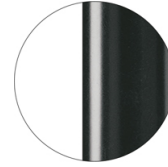
RAL 9010
VR Pure white



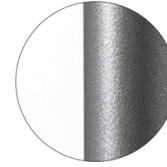
PANTONE 402 C
VR Turtle-dove



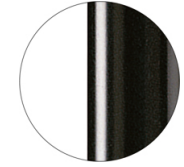
RAL 9006
VR White aluminium



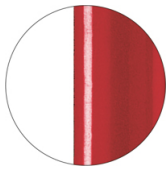
RAL 7016
VR Anthracite grey



VR Pewter



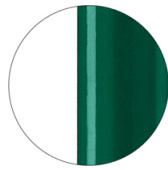
RAL 9005
VR Jet black



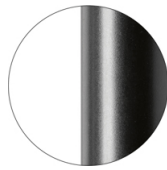
RAL 3003
VR Ruby red



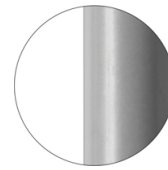
RAL 8017
VR Chocolate brown



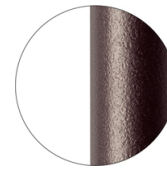
RAL 6005
VR Moss green



RAL 9005
VR Matt Jet Black



RAL 7037
VR Matt Dusty grey



VR Rough metallic
bronze

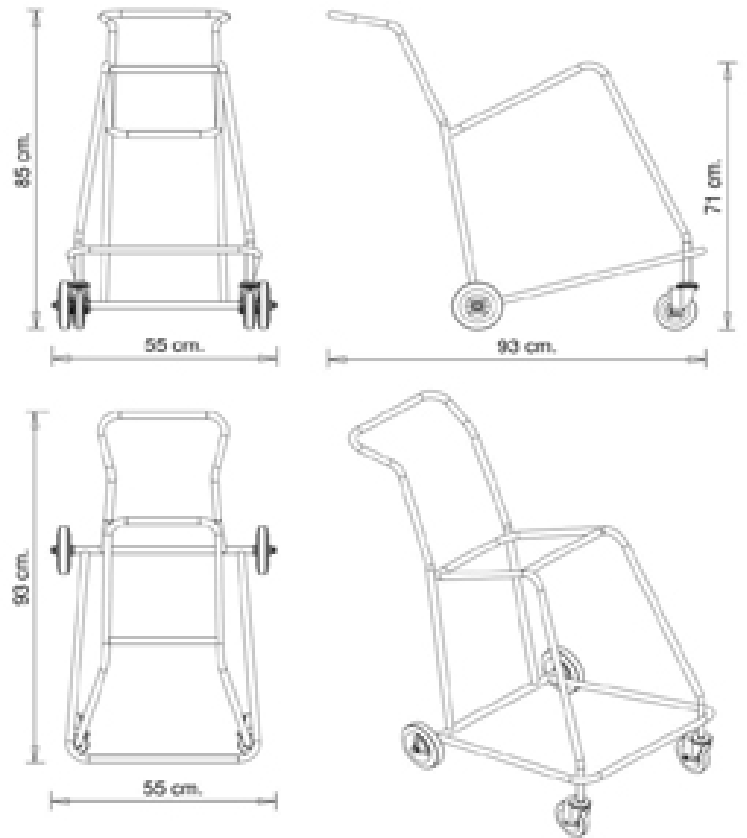
USES

coffee & restaurants, office and waiting areas, outdoor,

Trolley 536

UNI COLLECTION:

Uni 550, Uni 550M, Uni 378, Uni 378M, Uni 378B, Uni 378B-M, Uni 380, Uni 380M, Uni 380B, Uni 380B-M, Uni 562, Uni 562M, Uni 386, Uni 386M, Uni 602, Uni 602M, Uni 603, Uni 603M, Uni 551, Uni 551M, Uni 552, Uni 552M, Uni 552G, Uni 552M-G, Uni 552T, Uni 552G-T, Uni 558-DP, Uni 558M-DP, Uni 558-DR, Uni 558M-DR, Uni 553, Uni 553M, Uni 577, Uni 577M, Uni 544, Uni 565, Uni 391, Uni 391M, Uni 393, Uni 393M, Uni 220, Uni 221, Uni 222, Uni 223, Trolley 536,



Trolley in black painted steel useful to store and move Uni 550, Uni 580 and Nassau 533 chairs. Equipped with wheels, it can carry up to 10 stackable chairs.

WEIGHT

5,8 kg

PACK

0,47 m³

PIECES PER BOX

1

USES

coffee & restaurants, office and waiting areas, outdoor,