



Calla P M_X PP Armchair

design Fabrizio Batoni, 2019

Calla armchair on fixed trestle with four-ways in lacquered steel.
Polypropylene seat. Optional: fixed cushion for the seat upholstered in leather, faux leather or fabric. The chair is also available in the plastic version without armrests and upholstered, with and without armrests.



Colors and Materials

Structure



White Steel



Sand Steel



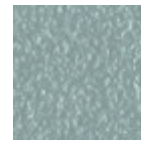
Pastel Yellow Steel



Grafite Steel



Black Steel



Light blue steel



Ocean Blue Steel



Bronze Steel



Fango Steel



Light Grey Steel



Brown Steel



Ocher Steel



Facepowder Pink Steel

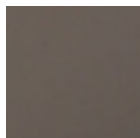


Red steel



Sage Green Steel

Coating



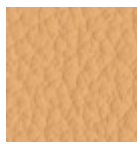
Polypropylene

9 Colors

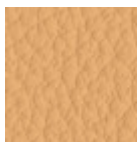
Extensions

**Fiore Leather**

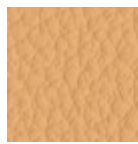
18 Colors

**Plein Fleur**

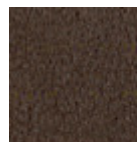
18 Colors

**Piel Fleur**

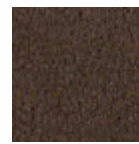
18 Colors

**Pelle fiore**

18 Colors

**Vintage Leather**

4 Colors

**Peau vintage**

4 Colors

**Piel Vintage**

4 Colors

**Pelle Vintage**

4 Colors

**Secret Faux Leather**

22 Colors

**Similpelle Secret**

22 Colors

**Similicuir Secret**

22 Colors

**Ecopiel Secret**

22 Colors

**Similicuir Vintage**

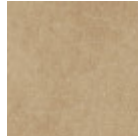
12 Colors

**Ecopiel Vintage**

12 Colors

**Vintage Faux
Leather**

12 Colors

**Similpelle Vintage**

12 Colors

Dimensions

Dimensions

Volumetric Details

Weight 7 Kg**Volume** 0.26 mc**Package** 1

Image not found or type unknown

	cm	inch
A	79	31,1
B	52	20,5
C	55	21,7
D	46	18,1
E	68	26,8