

Clessidra Table

design Paolo Vernier

Fixed round table with solid or two-colored steel base. Wooden version available. Crystalceramic or wooden top.



Colors and Materials

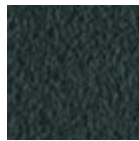
Structure



White Steel



Sand Steel



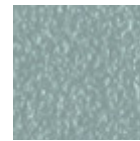
Grafite Steel



Brown Steel



Black Steel



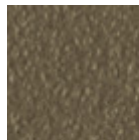
Light blue steel



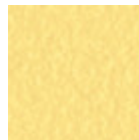
Ocean Blue Steel



Bronze Steel



Fango Steel



Pastel Yellow Steel



Ocher Steel



Facepowder Pink Steel

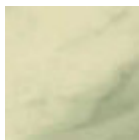


Red steel



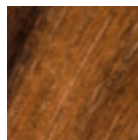
Sage Green Steel

Coating

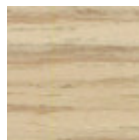


Ceramic with effect calacatta marble

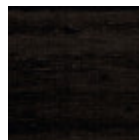
1 color



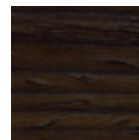
Veneered Flamed Walnut



Veneered wood light oak



Black Lacquered Veneered Wood



Veneered Wood Dark Oak

Dimensions

Volumetric Details

Weight 180 Kg

Volume 0.7 mc

Package 1

Image not found or type unknown

	cm	inch
A	76	29.9
B	150	59.1
C	150	59.1

Downloads

3D Clessidra (zip) - <https://www.midj.com/images/uploads/resources/midj-clessidra-3d.zip>